

# METEOROLOGY { } { }

FAIR LOG.

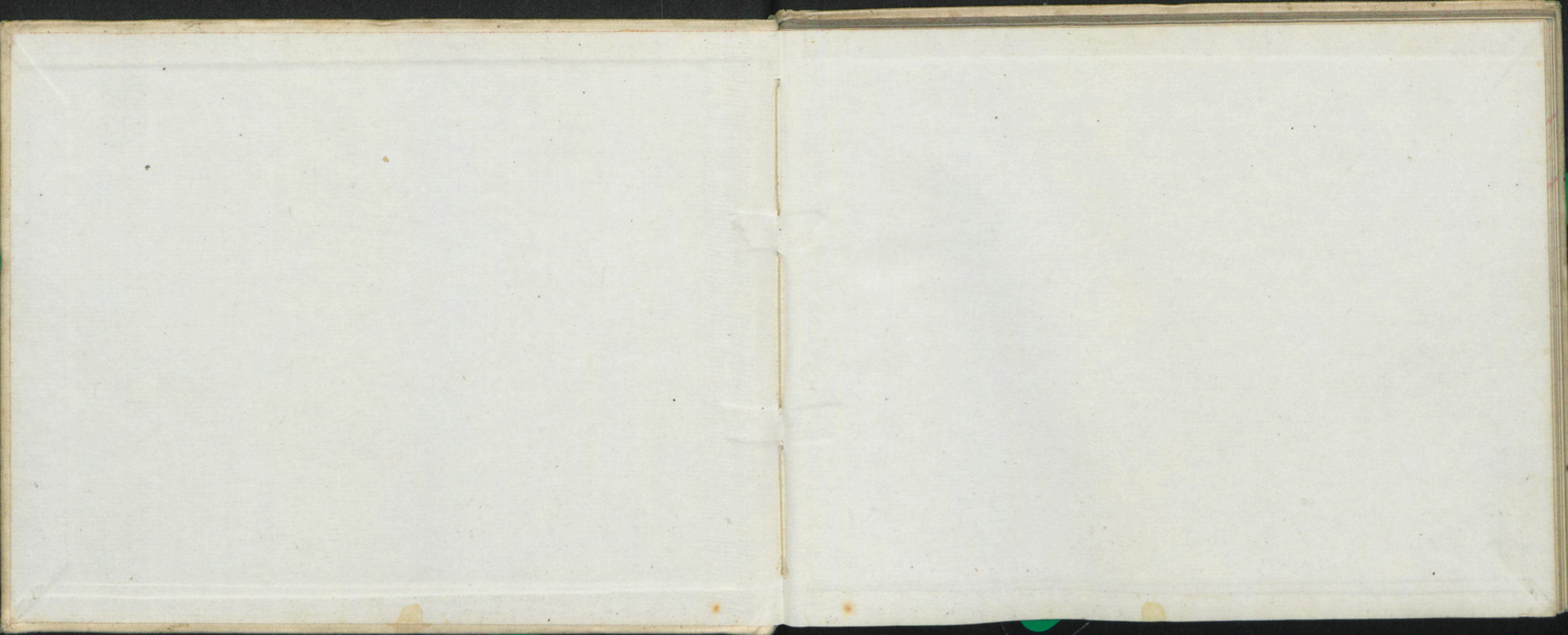
No 3.

NOVEMBER 16<sup>th</sup> 1911.  
to

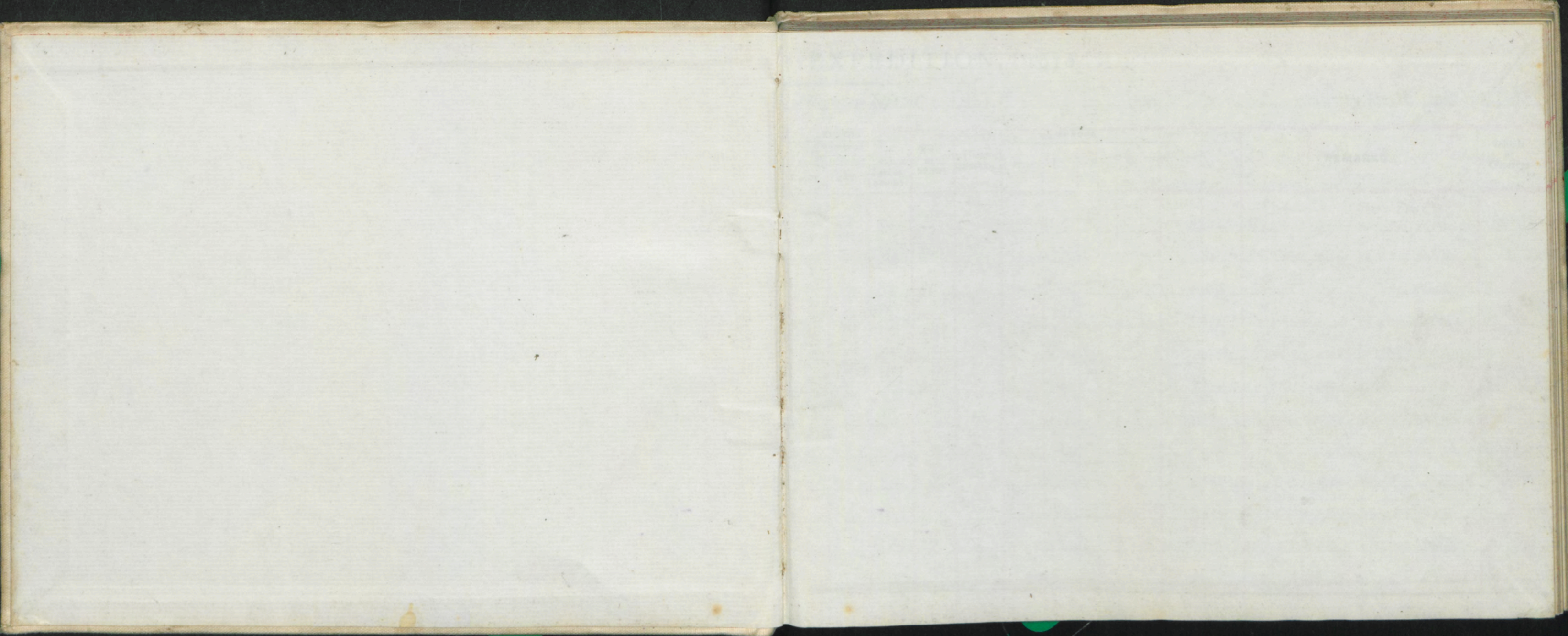
NOV 16<sup>th</sup> 1911 - JAN 3<sup>rd</sup> 1912

BAE 18











## BRITISH ANTARCTIC

16 & 17 day Month of November

1911

*Meteorological*

## EXPEDITION, 1910.

Register kept at Cape Adare

Day	Hour	Barometer No.	Attd. Ther. No.	THERMOMETERS				WIND		ANEMOMETER		Weather	CLOUDS		CLOUDS		Rain or Snow	Hours Sunshine	AURORA				REMARKS	Initials of Observer
				Dry Bulb No.	Max. Shade No.	Spirit Min. No.	Solar Radn. No.	Terr. Radn. No.	Direction True	Force	Miles Read		3 Min. Later	Amount	Kind	Direction moving from			Upper	Lower	N	E		
Thursday		11 55	No. ~	No. 8483	No. 3441	No. 952																		
16	11	8AM	29.524	38.5	+19.6 <sup>m</sup> +19.5 +22.2 +19.7	—	—	Broken	S.E. 1-2			0 10	10	—	—	S E Obs	0						Nb Seed moving along on Sop. Cape Adare from S	JWB
		10AM	29.540	48.8	+21.2 <sup>m</sup> +21.8 +24.8 +19.0	—	—		S E Clear			B 1 1/2 C 8 1/2	8 1/2	—	—	S S E Clear	0	1/4					Nb forming on Cape Adare and moving from S S E	JWB
		12NOON	29.560	52.0	+25.0 <sup>m</sup> +24.0 +26.2 +21.0	1038	—		S 0-1			B 8 C 2	2	—	—	Clear	0	2						
		2PM	29.542	56.0	+23.8 <sup>m</sup> +23.8 +27.5 +21.5	106.2	—		SW 1			B 9 C 1	1	—	—	Clear	0	2						
		6PM	29.542	58.2	+22.2 <sup>m</sup> +22.0 +25.0 +22.0	—	—		Calm			B 9 C 1	1	—	—	Clear	0	2						
		8PM	29.540	58.0	+19.2 <sup>m</sup> +19.2 +21.0 +19.2	—	—		NW 3-4			B 5 C 5	5	—	—	ESE Obs	0	2						
		10PM	29.534	55.0	+17.9 <sup>m</sup> +18.0 +19.0 +17.9	—	—		Calm			B 1 C 9	9	—	—	ESE Clear	0	1						
Friday																								
17	11	8AM	29.456	38.0	+19.2 <sup>m</sup> +19.2 +21.2 +17.8	—	—		NW Airs			C 10	10	—	—	Clear	0	0						
		10AM	29.494	48.2	+19.5 <sup>m</sup> +19.8 +24.3 +18.5	—	—		SW Airs			C 10	10	—	—	Obs	0	0						
		12NOON	29.496	48.5	+18.8 <sup>m</sup> +19.0 +22.8 +18.8	85.2	—		Calm			B 1 C 9	9	—	—	Clear	0	0						
		2PM	29.496	47.8	+18.2 <sup>m</sup> +18.8 +23.0 +18.0	95.8	—		SW Airs			C 10	10	—	—	Clear	0	0						



## BRITISH ANTARCTIC

## EXPEDITION, 1910.

17 &amp; 18 day, Month of November

1911

Meteorological

Register kept at Cape Adare

Day	Hour	Barometer	Attd. Ther.	THERMOMETERS				Solar Radn.	Terr. Radn.	WIND		ANEMOMETER		Weather	CLOUDS		CLOUDS		Rain or Snow	Hours Sunshine	AURORA				REMARKS	Initials of Observer
				Dry Bulb	Max. Shade	Spirit Min.				Direction True	Force	Miles Read	3 Min. Later		Amount	Kind	Direction moving from	Lower			N	E	S	W		
Friday		No. 1155	No.	No. 8183	No.	No. 3441	No. 952	No. 3117																		
17	11																									
	4 PM	29.500	48.0	+18.0	+21.0	+18.0	—	—	—	NW	airs			B1C9	9	—			Obs	0						
	6 PM	29.504	52.5	+23.0	+19.5	+22.8	—	—	—	NW	airs			B1C9	9	—			Clear	0						
	8 PM	29.530	50.5	+17.5		+17.5	—	—	—	N	airs			B1D	10	—			Obs	0						
	10 PM	29.524	49.1	+15.5		+15.5	—	+2.2M	+15.8P	Calm				B1D	10	—			Obs	0						
18	11																									
Saturday	8 AM	29.517	37.6	+14.9		+13.9		+8.1M	+13.9P	NW	airs			B1D	10	—			Obs	0						
	12 PM	29.542	45.0	+17.0		+13.9		+13.9M	+24.8P	Calm				B1D	10	—			Obs	0						
	12 PM	29.670	54.3	+18.5		+13.5		+23.8	+25.5	NW	airs			B1C9½	9½	—			Obs	0						
	2 PM	29.682	54.9	+18.2		+17.5		—	—	SW	airs			B1C7	7	—			Obs	0						
	6 PM	29.684	53.0	+17.2		+17.5		+22.0P		Calm				B1C9	9	—			Clear	0						
	8 PM	29.700	55.8	+16.6		+16.6		+18.7P		Calm				H109	10	—			Clear	0						



## BRITISH ANTARCTIC

## EXPEDITION, 1910.

19th day, Month of November

1911

Meteorological

Register kept at

Cape Adare

Day	Hour	Barometer	Attd. Ther.	THERMOMETERS				WIND		ANEMOMETER		Weather	CLOUDS		CLOUDS		Rain or Snow	Hours Sunshine	AURORA				REMARKS	Initials of Observer
				Dry Bulb	Max.	Spirit Min.	Solar Radn.	Terr. Radn.	Direction True	Force	Miles Read		3 Min. Later	Amount	Kind	Direction moving from			Upper	Lower	Erebus Smoke	N		
Sunday		No. 1155	No.	No. 8483	No.	No. 2411	No. 952	No. 2417																
19	11	8AM	29.668	37.8	+16.2 M	+15.0		+15.2 M				037C3	3	—	—	ESE	Clear	—	—				Small ST Cu	
		10AM	29.728	51.2	+16.2 M	+16.1		+15.4 M				039C1	1	—	—	ESE	Clear	—	—				Small ST Cu	
		12NOON	29.706	50.5	+19.9	+16.2	97.0	+19.9				039C1	10	—	—	SE	Clear	—	—				Small ST Cu	
		2PM	29.740	54.0	+19.9	+19.2	116.8	+21.4				038C2	2	—	—	—	Clear	—	—				Small ST Cu	
		4PM	29.728	55.1	+19.5	+19.2		+21.5				037C3	3	—	—	SE	Clear	—	2				Small ST Cu	
		6PM	29.733	57.2	+18.4	+18.5		+29.2				035C5	5	—	—	SE	Clear	—	?				Small ST Cu	
		8PM	29.726	46.7	+17.5	+17.8		+31.2				036C4	4	—	—	—	Clear	—	?				Small ST Cu	
		10PM	29.750	54.5	+15.2	+14.2		+18.0 M				035C5	5	—	—	SE	Clear	—	1				Small ST Cu	
Monday		8AM	29.782	39.0	+17.8 M	+19.8		+19.0 M				039C1	1	—	—	—	Clear	—	2				Small ST Cu	
		10M	29.842	52.8	+17.8	—		+15.0 M				039C1	1	—	—	S	Clear	—	2				Small ST Cu	
		12NOON	29.850	55.0	+25.5	+21.0	103.8	+19.0 P				039C1	1	—	—	—	Clear	—	2				Small ST Cu	



## BRITISH ANTARCTIC

## EXPEDITION, 1910.

20821 day Month of November

1911

Meteorological

Register kept at Cape Adare

Day	Hour	Barometer	Attd. Ther.	THERMOMETERS				WIND		ANEMOMETER		Weather	CLOUDS		CLOUDS		Rain or Snow	Hours Sunshine	AURORA				REMARKS	Initials of Observer
				Dry Bulb	Max.	Spirit Min.	Solar Radn.	Terr. Radn.	Direction True	Force	Miles Read		3 Min. Later	Amount	Kind	Direction moving from			Upper	Lower	N	E		
Monday		No. 1155	No.	No. 8483	No.	No. 3441	No. 952	No. 3447																
20	11	29888	61.2	+20.9	—	+20.0	105.0	+18.8	M			B 9 C 1	1	—	—	Clear	0	2					RWP	
	4	29882	50.8	+20.2	—	+19.8	—	+20.0	M			B 9 1/2 C 1/2	1/2	—	—	Clear	0	2					L.H.O.	
	6	29942	63.0	+20.0	—	+20.0	—	+24.8	M			B 9 C 1	1	—	S.E.	Clear	0	2					H.D.	
	8	29998	64.0	+19.7	—	+18.7	—	+24.8	M			B 9 1/2 C 1/2	1/2	—	—	Clear	0	2					RWP	
21	11																							
Tuesday	8 AM	30.048	42.2	+17.0	—	+7.8		+8.6	M			B 10	0	—	—	Clear	0	2					RWP	
	10 AM	30.075	52.8	+24.2	—	+18.0		+15.0	M			B 10	0	—	—	Clear	0	2					RWP	
	12 NOON	30.054	52.2	+22.1	—		105.3	+19.2	M			B 10	0	—	—	Clear	0	2					RWP	
	2 PM	30.016	50.4	+22.3	—	+21.2	105.3	+20.4	M			B 9 3/4 C 1/4	1/4	—	S	Clear	0	2					RWP	
	4 PM	30.004	57.2	+23.3	—	+22.3		+22.1	M			B 9 1/2 C 1/2	1/2	—	S	Clear	0	2					RWP	
	6 PM	29.984	52.5	+22.8	—	+22.0		+25.5	M			B 9 C 1	1	—	S	Clear	0	2					H.D.	
	8 PM	29.960	66.2	+21.0	—	+21.0		+30.6	M			B 9 C 1	1	—	—	Clear	0	2					RWP	
	10 PM	29.942	52.0	+20.0	—	+20.0		+28.0	M			B 8 C 2	2	—	SSW	Clear	0	2					H.D.	



## BRITISH ANTARCTIC

## EXPEDITION, 1910.

22<sup>nd</sup> 23<sup>rd</sup> day, Month of November

1911

Meteorological

Register kept at Cape Adare

Day	Hour	Barometer	Attd. Ther.	THERMOMETERS			WIND		ANEMOMETER		Weather	CLOUDS		CLOUDS		Rain or Snow	Hours Sunshine	AURORA				Remarks	Initials of Observer
				Dry Bulb	Max.	Spirit Min.	Solar Radn.	Terr. Radn.	Direction True	Force		Miles Read	3 Min. Later	Amount	Kind			Upper	Lower	Direction moving from	N		
Tuesday		No. 1155	No.	No. 8283	No. —	No. 3444	No. 952	No. 3447															
22	11	8 AM	29.850	48.0	+19.9 <sup>M</sup>	+16.9	—	+15.9 <sup>M</sup>	W	16	—	—	—	Clear	0	0	—	—	—	—	—	SI <sup>1</sup>	P RWP
		10 AM	29.866	54.5	+24.3 <sup>M</sup>	+19.9	—	+21.6 <sup>M</sup>	Calm	—	—	—	SE	Clear	0	1/2	—	—	—	—	—	Screen door not fastened	P RWP
		12 Noon	29.842	54.2	+22.2 <sup>M</sup>	+20.0	—	+21.9 <sup>M</sup>	SE	14	—	—	—	Clear	0	1	—	—	—	—	—	SI <sup>1</sup>	P RWP
		2 PM	29.818	54.8	+22.5 <sup>M</sup>	+22.2	—	+24.0 <sup>M</sup>	W	14	—	—	—	Clear	0	0	—	—	—	—	—	SI <sup>1</sup>	P RWP
		4 PM	29.833	57.3	+21.9 <sup>M</sup>	+21.9	—	+26.6 <sup>M</sup>	SW	14	—	—	—	Clear	0	0	—	—	—	—	—	SI <sup>1</sup>	P RWP
		6 PM	29.830	59.8	+21.8 <sup>M</sup>	+21.8	—	+24.9 <sup>M</sup>	SW	14	—	—	—	Clear	0	0	—	—	—	—	—	SI <sup>1</sup>	P RWP
		8 PM	29.839	61.6	+21.5 <sup>M</sup>	+21.2	—	+23.3 <sup>M</sup>	Calm	—	—	—	SE	Clear	0	0	—	—	—	—	—	SI <sup>1</sup>	P RWP
		10 PM	29.796	53.0	+21.2 <sup>M</sup>	+21.0	—	+21.9 <sup>M</sup>	Calm	—	—	—	—	Obs	0	0	—	—	—	—	—	SI <sup>1</sup>	P RWP
Thursday					+19.2 <sup>M</sup>	+15.2	—	+19.5 <sup>M</sup>	ESE	6-8	—	—	—	Obs	0	10	—	—	—	—	—	SI <sup>1</sup>	P RWP
23	11	8 AM	29.575	38.3	+19.8 <sup>M</sup>	+14.6	—	+19.8 <sup>M</sup>	ESE	7-9	—	—	—	Obs	0	10	—	—	—	—	—	SI <sup>1</sup>	P RWP
		10 AM	29.568	39.2	+20.5 <sup>M</sup>	+19.0	—	+19.2 <sup>M</sup>	ESE	5-9	—	—	—	Obs	0	10	—	—	—	—	—	SI <sup>1</sup>	P RWP
		12 Noon	29.548	38.2	+20.5 <sup>M</sup>	+19.0	—	+20.1 <sup>M</sup>	ESE	5-9	—	—	—	Obs	0	10	—	—	—	—	—	SI <sup>1</sup>	P RWP



## BRITISH ANTARCTIC

## EXPEDITION, 1910.

23 &amp; 24 day, Month of November

1911

Meteorological

Register kept at Cape Adare

Day	Hour	Barometer	Attd. Ther.	THERMOMETERS				WIND		ANEMOMETER		Weather	CLOUDS		CLOUDS		Rain or Snow	Hours Sunshine	AURORA				REMARKS	Initials of Observer	
				Dry Bulb	Max.	Spirit Min.	Solar Radn.	Terr. Radn.	Direction True	Force	Miles Read		3 Min. Later	Amount	Kind	Direction moving from			Upper	Lower	N	E			S
Thursday		No. 1155	No.	No. 8483	No. —	No. 3444	No. 952	No. 3447																	
23	11	2PM	29.588	40.1	+19.2m	+16.4		+19.2m	ESS	4-7		0 10	10	—	—	—	Obs	SW	0				Nb	heavy	P RWP
		4PM	29.632	41.0	+23.5m	+19.8		+21.4m	SS E	2-5		0 10	10	—	—	—	Obs	0	0				Nb	0	P RWP
		6PM	29.682	45.5	+24.0m	+23.0		+24.5m	SS E	2		0 10	10	—	—	—	Obs	0	0				Nb	0	P RWP
		8PM	29.710	52.0	+24.8m	+22.7		+23.9m	S	3-5		0 10	10	—	—	—	Obs	0	0				Nb	0	sun just showing as a bright spot P RWP
		10AM	29.736	54.5	+25.5m	+22.1m		+24.2m	SE	4-6		0 10	10	—	—	—	Obs	0	0				Nb	0	warning glacier visible P RWP
Friday																									
24	11	8AM	29.817	46.8	+25.6m	+19.6		+19.8m	W	1		03 C7	7	—	—	—	Obs	0	0				51° Cir Cu	0	P RWP
		10AM	29.874	53.8	+25.8m	+25.5		+26.7m	WNW	1		057 C3	3	—	—	—	Clear	0	1hr				51° Cir Cu	0	sunshine record blown out of the cloud P RWP
		12 NOON	29.902	61.0	+28.2m	+28.8		+27.9m	W	airs		032 C8	8	—	—	—	Clear	0	2				51° Cir Cu	0	P RWP
		2PM	29.936	59.2	+30.9m	+26.9	125.9	+35.4m	W	3		033 C7	7	—	—	S	Clear	0	2				51° Cir Cu	0	P RWP
		4PM	29.927	57.9	+26.9m	+22.5		+28.9m	PS	3-4		033 C7	7	—	—	SW	20hs	0	2				51° Cir Cu	0	P RWP
		6PM	29.946	52.5	+23.5m	+23.0		+24.2m	SS E	2		01 C9	9	—	—	—	20hs	0	2				51° Cir Cu	0	Sir George Neelson Glacier Obscured P RWP



## BRITISH ANTARCTIC

## EXPEDITION, 1910.

24 &amp; 25 Day Month of November

1911

Meteorological

Register kept at Cape Adare

Day	Hour	Barometer	Attd. Ther.	THERMOMETERS				WIND		ANEMOMETER		Weather	CLOUDS		CLOUDS		Rain or Snow	Hours Sunshine	AURORA				Kind of Clouds	REMARKS	Initials of Observer	
				Dry Bulb	Max.	Spirit Min.	Solar Radn.	Terr. Radn.	Direction True	Force	Miles Read		3 Min. Later	Amount	Kind	Direction moving from			Upper	Lower	N	E				S
Friday		No. 1155	No.	No. 8483	No. —	No. 3444	No. 952	No. 3447																		
24	11	8PM	29.948	59.9	+21.9 <sup>m</sup>	+21.2		+21.8 <sup>m</sup>	S	3-4		B <sup>2</sup> C <sup>9</sup> 9 <sup>1</sup>	—	—	—	20hs	0	2					ST-Cu	0	Sir J Neuner Glacier Obscure	RWP
		16PM	29.950	55.0	+21.2 <sup>m</sup>	+21.2		+21.0 <sup>m</sup>	S	2		B1 C9 9	—	—	—	20hs	0	0					ST-Cu	0	" " " " " "	H.D.
Saturday																										
25	11	8AM	29.902	48.3	+23.2 <sup>m</sup>	+19.5		+19.2 <sup>m</sup>	S	1-2		B7 C3 3	—	—	—	Clear	0	2					Scud ST-Cu	0		RWP
		10AM	29.929	53.9	+21.9 <sup>m</sup>	+21.6		+21.9 <sup>m</sup>	S	1-0		B7 C3 3	—	—	—	Clear	0	1 1/2					Scud ST-	0		RWP
		12NOON	29.902	57.4	+23.4 <sup>m</sup>	+22.0		+22.2 <sup>m</sup>	S	1-0		B7 C3 3	—	—	—	Clear	0	1 1/2					Scud ST-	0		RWP
		2PM	29.902	62.3	+24.3 <sup>m</sup>	+22.3	113.8	+23.4 <sup>m</sup>	NW	1		B7 C3 3	—	—	—	Clear	0	2					Scud ST-	0		RWP
		4PM	29.898	65.8	+24.0 <sup>m</sup>	+23.5		+26.2 <sup>m</sup>	NW	1		B5 C5 5	—	—	—	Clear	0	2					Scud ST-	0	Cloud spreading from Cape Adare	RWP
		6PM	29.882	65.0	+23.0 <sup>m</sup>	+23.0		+31.6 <sup>m</sup>	W	1		B4 C6 6	—	—	—	Clear	0	2					Scud ST-	0		H.D.
		8PM	29.845	63.0	+21.9 <sup>m</sup>	+21.5		+31.2 <sup>m</sup>	Cal			B9 C1 1	—	—	—	Clear	0	2					Scud ST-	0		RWP
		10PM	29.848	62.0	+19.0 <sup>m</sup>	+19.0		+28.9 <sup>m</sup>	SSW	1		B9 1/2 C 1/2 1/2	—	—	SS E	20hs	0	1 1/4					Scud ST-Cu	0	Sir J Neuner Glacier Obscure by cum. Cloud	A.E.



## BRITISH ANTARCTIC

## EXPEDITION, 1910.

26 &amp; 27 day Month of November

1911

Meteorological

Register kept at Cape Adare

Day	Hour	Barometer No.	Attd. Ther. No.	THERMOMETERS				Direction True	Force	ANEMOMETER		Weather	CLOUDS		Upper	CLOUDS		Rain or Snow	Hours Sunshine	AURORA				REMARKS	Initials of Observer
				Dry Bulb No.	Max. No.	Spirit Min. No.	Solar Radn. No.			Terr. Radn. No.	Miles Read		3 Min. Later	Amount		Kind	Direction moving from			Lower	N	E	S		
26	11	71	No. 1155	No. 8483	No. 3447	No. 952	No. 3447																		
Sunday	8AM	29.662	42.0	+19.0M		+11.7		+11.8M	NNW	0-1		B9C1	1	-	-	SSE	Clear	-	4					Upper part of ice George	
	10AM	29.683	53.0	+17.8M		+16.8		+16.9M	Calm			B8C2	2	-	-	NW	Clear	-	2					Incomes glacier obscure by SI	A
	12NOON	29.650	50.9	+21.2M		+17.8	112.8	+13.3M	NW	2		B7C3	3	-	-	NW	Clear	-	1					Clouds moving fast	P
	2PM	29.634	52.5	+17.2M		+17.0		+21.6M	SSW	1-2		B9C1	9	-	-	SE	Clear	-	2					from NW	P
	4PM	29.602	51.5	+17.3M		+17.0		+20.1M	W	1-2		B10	10	-	-	SE	Clear	-	-						
	6PM	29.600	53.5	+16.0M		+16.0		+23.8M	Calm			B2C8	8	-	-	NW	Clear	-	1					Bottom part of W.G. just inside A	
	8PM	29.592	55.0	+17.5M		+11.1		+22.3M	SE	Clear		B7C3	3	-	-	W	Clear	-	2					of incomes glacier obscured	H.D.
	10PM	29.592	50.0	+15.0M		+15.0		+18.0M	SE	Clear		B7C3	3	-	-	W	Clear	-	2					circ SI radiant; radiant	A
Monday	8AM	29.598	39.5	+19.8M		+14.4		+18.5M	SW	Clear		B1C9	9	-	-	Clear	0	0						point W	
	10AM	29.665	51.0	+22.3M		+18.3		+27.2M	SW	Clear		C10	10	-	-	Clear	0	0							
	12NOON	29.660	53.9	+23.0M		+21.0	87.3	+27.8M	S	1		B1C9	9	-	-	Clear	0	0						SI Clouds S.E. over	



## BRITISH ANTARCTIC

## EXPEDITION, 1910.

27 &amp; 28 day Month of November

1911

Meteorological

Register kept at Cape Adare

Day	Hour	Barometer	Attd. Ther.	THERMOMETERS				WIND		ANEMOMETER		Weather	CLOUDS		CLOUDS		Rain or Snow	Hours Sunshine	AURORA				REMARKS	Initials of Observer
				Dry Bulb	Max.	Spirit Min.	Solar Radn.	Terr. Radn.	Direction True	Force	Miles Read		3 Min. Later	Amount	Kind	Direction moving from			Upper	Lower	N	E		
Monday		No. 1155	No.	No. 8183	No. —	No. 3444	No. 952	No. 3447																
27	11	11	2PM	29.684	56.8	+23.9M		+22.8876	+28.7P	S Air		B1C9	9	—	—	Clear	0	0					Clear to S & S W	P RW
			4PM	29.698	56.9	+24.2M		+22.8	+24.4P	Calm		B1#2C7	9	—	—	Clear	0	0					Halo of 29° Sun shining through haze	RW
			6PM	29.700	53.0	+24.8		+25.0	+35.8P	Calm		B3C7	7	—	—	Clear	0	2						J.D.
			8PM	29.742	64.2	+23.1M		+23.1	+35.2M	Calm		B6C4	4	—	—	Clear	0	2						P RW
			10PM	29.724	49.0	+20.2M		+20.2	+23.8P	Calm		B5C5	5	—	—	Clear	0	?						D J.D.
Tuesday																								
28	11	11	8AM	29.720	46.1	+23.6M		+18.5M	+26.0P	W Air		C 10	10	—	—	—	0							P RW
			10AM	29.775	53.5	+24.8M		+29.2M	+25.8P	WNW 1		B2C9½	9½	—	—	Clear	0							P RW
			12MM	29.780	57.0	+25.2M		+28.8M	+30.8P	WSW 1		B1C9	9	—	—	Clear	0							P RW
			2PM	29.792	58.3	+25.6M		+30.6M	+31.8P	Calm		C 10	10	—	—	Clear	0							P RW
			4PM	29.696	60.0	+25.2M		+29.4M	+30.4P	NW Air		B2C9½	9½	—	—	Clear	0							P RW
			6PM	29.800	62.0	+24.5M		+25.4	+27.0P	S Air		B2C9½	9½	—	—	Clear	0							D J.D.



## BRITISH ANTARCTIC

## EXPEDITION, 1910.

28 &amp; 29 day Month of November

1911

Meteorological

Register kept at

Cape Adare

Day	Hour	Barometer	Attd. Ther.	THERMOMETERS				WIND		ANEMOMETER		Weather	CLOUDS		Rain or Snow	Hours Sunshine	AURORA				REMARKS	Initials of Observer
				Dry Bulb	Max.	Spirit Min.	Solar Radn.	Terr. Radn.	Direction True	Force	Miles Read		3 Min. Later	Amount			Kind	Upper	Lower	N		
Tuesday		No. 1155	No. -	No. 8483	No. -	No. 3441	No. 952	No. 3447														
28	11	8PM	29.794	52.2	+23.7 <sup>m</sup>	+23.7		+25.1 <sup>m</sup>	W Airs			B 2 C 9 1/2	9 1/2	-	-	Clear	0	0			ST Cu N 1/2 ST	P RWP
		10PM	29.814	59.2	+23.1 <sup>m</sup>	+23.1		+23.8 <sup>m</sup>	Calm			B 2 C 9 1/2	9 1/2	-	-	Clear	0	0			ST Cu N 1/2	0 Snow fog on Top Cape Adare A
29	11	11																				
Wednesday	8AM	29.766	45.0	+23.8 <sup>m</sup>	+23.7	+22.2		+22.3 <sup>m</sup>	Calm			C 10	10	-	-	Clear	0	0			ST Cu N 1/2	P RWP
	10AM	29.777	48.8	+24.9 <sup>m</sup>	+24.1	+23.5		+25.9 <sup>m</sup>	W Airs			C 10	10	-	-	Clear	0	0			ST Cu N 1/2	P RWP
	12PM	29.764	51.9	+24.8 <sup>m</sup>	+24.8	+23.2	67.2	+26.7 <sup>m</sup>	Calm			B 1 C 9	9	-	-	Clear	0	0			ST Cu N 1/2	1003
	2PM	29.784	58.2	+25.2 <sup>m</sup>	+25.2	+23.2	67.2	+28.5 <sup>m</sup>	Calm			C 10	10	-	-	Clear	0	0			ST Cu N 1/2	1003
	4PM	29.766	59.5	+25.8 <sup>m</sup>	+23.8	+23.8		+26.7 <sup>m</sup>	W Airs			C 10	10	-	-	Clear	0	0			ST Cu N 1/2	P RWP
	6PM	29.784	62.0	+25.2 <sup>m</sup>	+23.5	+23.2		+25.2 <sup>m</sup>	Calm			C 10	10	-	-	Clear	0	0			ST Cu N 1/2	1003
	8PM	29.785	62.2	+25.3 <sup>m</sup>	+22.3	+22.3		+23.8 <sup>m</sup>	Calm			C 10	10	-	-	Clear	0	0			ST Cu N 1/2	P RWP
	10PM	29.776	58.0	+25.0 <sup>m</sup>	+22.0	+22.0		+22.0 <sup>m</sup>	Calm			C 10	10	-	-	Clear	0	0			ST Cu	1003



## BRITISH ANTARCTIC

30<sup>th</sup> day, Month of November 1911.

*Meteorological*

## EXPEDITION, 1910.

Register kept at Cape Adare

Day	Hour	Barometer No.	Attd. Ther. No.	THERMOMETERS				WIND Direction True	Force	ANEMOMETER		Weather	CLOUDS		CLOUDS Direction moving from		Rain or Snow	Hours Sunshine	AURORA				REMARKS	Initials of Observer
				Dry Bulb No.	Max. No.	Spirit Min. No.	Solar Radn. No.			Terr. Radn. No.	Miles Read		3 Min. Later	Upper	Lower	N			E	S	W			
Thursday		No. 1155	No. -	No. 848	No. -	No. 344	No. 962	No. 344																
30	11	8AM 29.776	57.8	+23.8 <sup>m</sup>	-	+21.2	-	+21.0 <sup>m</sup>				Calm	C109	10	+	-	-	1/2 obs	0	0				
		10AM 29.844	52.0	+23.9 <sup>m</sup>	-	+23.5	-	+26.7 <sup>m</sup>				W 1	C109	10	+	-	-	1/2 obs	0	0				
		12NDM 29.858	52.8	+24.2 <sup>m</sup>	-	+23.6	-	+27.2 <sup>m</sup>				W 1	C505	10	+	-	-	1/2 obs	0	0				
		2PM 29.886	58.8	+24.2 <sup>m</sup>	-	+23.6	-	+27.2 <sup>m</sup>				W 1	0 10	10	+	-	-	1/2 obs	0	0				
		4PM 29.882	55.9	+23.8	-	+23.6	-	+28.3 <sup>m</sup>				Calm	B2C92	9 1/2	-	-	-	Clear	0	0				
		6PM 29.894	53.0	+23.0	-	+23.0	-	+25.0 <sup>m</sup>				S W air	B2C92	9 1/2	-	-	-	Clear	0	0				
		8PM 29.914	64.2	+22.2	-	+22.2	-	+23.3 <sup>m</sup>				W air	B2C92	9 1/2	-	-	-	Clear	0	0				
		10PM 29.890	57.6	+21.4	-	+21.4	-	+21.9 <sup>m</sup>				S air	B2C92	9 1/2	-	-	-	Clear	0	0				
End of November Readings																								



## BRITISH ANTARCTIC

## EXPEDITION, 1910.

1<sup>st</sup> & 2<sup>nd</sup> Day Month of December

1911

Meteorological

Register kept at Cape Adare

Day	Hour	Barometer	Attd. Ther.	THERMOMETERS				WIND		ANEMOMETER		Weather	CLOUDS		CLOUDS		Rain or Snow	Hours Sunshine	AURORA				Kind of Drift	REMARKS	Initials of Observer
				Dry Bulb	Max.	Spirit Min.	Solar Radn.	Terr. Radn.	Direction True	Force	Miles Read		3 Min. Later	Amount	Kind	Upper			Lower	Direction moving from	N	E			
Friday		No. 1155	No. -	No. 8483	No. -	No. 3444	No. 952	No. 3447																	
1	12 11	8AM	29.867	43.9	+23.6 <sup>m</sup>	—	+21.3	+21.1 <sup>m</sup>	Calm			B2C9 1/2	9 1/2	—	—	—	Clear	0	0						
		10AM	29.905	52.8	+24.2 <sup>m</sup>	—	+23.4	+29.2 <sup>m</sup>	NW	1		C 10	10	—	—	—	Clear	0	0						
		12 Noon	29.894	52.6	+25.0 <sup>m</sup>	—	+23.3	+30.8	NW	1		C 20 8	10	—	—	—	Clear	0	0						
		2PM	29.895	56.2	+24.5 <sup>m</sup>	—	+23.5	+29.8	NW	1		C 30 7	10	—	—	—	Clear	0	0						
		4PM	29.894	58.2	+24.7 <sup>m</sup>	—	+23.5	+32.4	NW	2		C 10	10	—	—	—	Clear	0	0						
		6PM	29.884	57.5	+23.5 <sup>m</sup>	—	+23.5	+32.0	NW	1		C 10	10	—	—	—	Clear	0	0						
		8PM	29.884	57.5	+22.5 <sup>m</sup>	—	+22.5	+26.6	NW	1		B2C9 1/2	9 1/2	—	—	—	Clear	0	0						
		10PM	29.866	55.0	+22.3 <sup>m</sup>	—	+22.3	+23.6	Calm			B2C9 1/2	9 1/2	—	—	—	Clear	0	0						
Saturday																									
2	12 11	8AM	29.796	49.3	+24.3 <sup>m</sup>	—	+20.0	+20.8 <sup>m</sup>	NW	1		B6C4	4	—	—	—	Clear	0	2						
		10am	29.838	53.2	+25.2 <sup>m</sup>	—	+23.6	+25.6 <sup>m</sup>	NW	ans		B2C2	2	—	—	—	Ch	0	2						
		12 noon	29.788	45.0	+25.5 <sup>m</sup>	—	+23.8	+24.5 <sup>m</sup>	NW	ans		B7C3	3	—	—	—	Ch	0	2						



## BRITISH ANTARCTIC

## EXPEDITION, 1910.

2<sup>nd</sup> & 3<sup>rd</sup> days of the Month of December

1911

Meteorological

Register kept at

Cape Adare

Day	Hour	Barometer No. 1155	Attd. Ther. No.	THERMOMETERS				WIND		ANEMOMETER		Weather	CLOUDS		CLOUDS		Rain or Snow	Hours Sunshine	AURORA				Cloud	Drift	REMARKS	Initials of Observer
				Dry Bulb No. 8463	Max. No.	Spirit Min. No. 3446	Solar Radn. No. 952	Terr. Radn. No. 3447	Direction True	Force	Miles Read		3 Min. Later	Amount	Kind	Upper			Lower	N	E	S				
2/12/11.	2pm	29.768 +0.23	42.0	26.8 M 27.5	—	25.8	114.5	25.5 M 30.4 P	WNW	1-2	—	B <sub>2</sub> C <sub>3</sub>	3	#	NW	Ch	0	2	—	—	—	—	St	0		RWP
	4pm	29.727 +0.23	42.0	24.5 M 25.0 P	—	24.5	—	29.5 M 33.2 P	NW	airs	—	B <sub>2</sub> C <sub>2</sub>	2	—	NW	Ch	0	2	—	—	—	—	St	0	Cloud cap forming S end of Cape Adare	RWP
	6pm	29.740 +0.10	44.0	24.5 M 24.0	—	24.0	—	30.0 M 34.6 P	Calm	—	—	B <sub>2</sub> C <sub>3</sub>	3	—	NW	Ch	0	2	—	—	—	—	St	0		D. H.D.
	8pm	29.706 -0.11	55.2	23.8 M 23.3	—	23.8	—	31.5 P	Calm	—	—	B <sub>2</sub> C <sub>2</sub>	8	—	—	Ch	0	2	—	—	—	—	St	0		RWP
	10pm	29.700 +0.20	43.0	22.2 M 22.5	—	22.2	—	23.5 P	Calm	—	—	B <sub>2</sub> C <sub>2</sub>	8	—	—	Ch	0	2	—	—	—	—	St	0		D. H.D.
3/12/11	8am	29.588 +0.36	37.0	22.2 M 22.5	—	20.1	—	18.2 M 27.0 P	SW	1	—	B <sub>2</sub> C <sub>2</sub>	8	—	—	Ch	0	0	—	—	—	—	St	0	Heavy bank of clouds to southward	c. Wal
	10am	29.604 +0.15	45.3	22.3 M 22.8 M	—	22.3	—	26.6 M 26.9 P	Calm	—	—	B <sub>1</sub> C <sub>4</sub>	9	—	—	Ch	Salt gran	0	—	—	—	—	St	0	Glaciers blotted out by snowcloud	RWP
	12noon	29.586 +0.17	44.1	23.0 M 23.7 M	—	22.2	77.0	25.8 M 26.3 P	WNW	airs	—	C <sub>10</sub>	10	—	—	Ch	Salt gran	0	—	—	—	—	St	0	Three mousqualls to W, NW & N.	RWP
	2pm	29.594 +0.10	44.1	23.5 M 26.1 M	—	22.5	77.0	25.3 M 27.2 P	W	airs	—	B <sub>2</sub> C <sub>4</sub> <sup>3</sup>	9 <sup>3</sup> <sub>4</sub>	—	—	Ch	Salt gran	0	—	—	—	—	St	0	Snow squall to WNW	RWP
	4pm	29.576 +0.17	44.5	26.1 M 24.5 M	—	23.6	—	26.7 M 31.7 P	W	1	—	B <sub>2</sub> C <sub>4</sub>	7	—	—	1/2 Gls	0	2	—	—	—	—	St	0		RWP
	6pm	29.564 -0.06	53.0	24.8 M	—	24.5	—	25.8 P	ESE	5-6	—	B <sub>1</sub> C <sub>4</sub>	9	NW	SE	1/2 Gls	0	2	—	—	—	—	St	0	Large Nimbus cloud observed	D. H.D.



## BRITISH ANTARCTIC

3 & 4 days of the Month of December

191 /

*Meteorological*

## EXPEDITION, 1910.

Register kept at Cape Adare.

Day	Hour	Barometer	Attd. Ther.	THERMOMETERS				WIND		ANEMOMETER		Weather	CLOUDS		CLOUDS		Rain or Snow	Hours Sunshine	AURORA				Kind of Cloud	Drift	REMARKS	Initials of Observer		
				Dry Bulb	Max.	Spirit Min.	Solar Radn.	Terr. Radn.	Direction True	Force	Miles Read		3 Min. Later	Amount	Kind	Direction moving from			Elev. or Smoke	N	E	S					W	
																Upper												Lower
		No. 1155	No.	No. 863	No.	No. 3446	No. 452	No. 3447																				
3/12/11	Monday	8pm	29.555	568	22.8 M	231	—	21.8	—	22.0 M	24.8 P	ESE	5-7	—	—	—	1/2 Cl	0	0	—	—	—	—	St No.	0		RWP	
		10pm	29.570 +0.07	480	22.5 M	230	—	18.1	—	18.1 M	22.4 P	ESE	5	—	—	ESE	Cl	0	?	—	—	—	—	No St.	0	Sun shining in the South.	D. H.B.	
4/12/11		8am	29.642 +0.21	391	22.7 M	231	—	18.1	—	18.1 M	22.4 P	SSE	1	—	—	S	Cl	0	Full time	—	—	—	—	St	0			
		10am	29.688 +0.20	432	22.6 M	228	—	21.8	—	21.3 M	22.9 P	WNW	1	—	—	SE	Cl	0	1 1/2	—	—	—	—	St Sand	0	Cloudy over from S & E a little.	RWP	
		12noon	29.717 +0.17	443	24.1 M	248	—	22.5	118.8	22.3 M	24.8 P	NW	1-0	—	—	—	Cl	0	1 1/2	—	—	—	—	St	0	Clouds light & spreading from Ca	RWP	
		2pm	29.746 +0.02	498	24.6 M	249	—	22.5	118.8	24.6 M	26.5 P	W	1-2	—	NW	SE	Cl	0	2	—	—	—	—	Ca St	0		RWP	
		4pm	29.769 +0.01	472	24.2 M	243	—	24.0	—	26.2 M	28.0 P	W	1	—	—	—	Cl	0	2	—	—	—	—	Ca St	0		RWP	
		6pm	29.794 +0.02	500	24.0 M	241	—	24.0	—	27.7 M	31.2 P	SW	2-3	—	—	SW	Cl	0	2	—	—	—	—	Sand St.	0		RWP	
		8pm	29.836 +0.20	576	21.9 M	219	—	21.9	—	26.2 M	29.8 P	SW	3	—	—	SW	Cl	0	2	—	—	—	—	Sand St	0		RWP	
		10pm	29.818 +0.15	447	21.1 M	212	—	20.1	—	21.1 M	28.1 P	S	1-2	—	—	WNW	Cl	0	1 1/2	—	—	—	—	St Sten	0		A. E.	



## BRITISH ANTARCTIC

## EXPEDITION, 1910.

546 day of the Month of December

1911

Meteorological

Register kept at Cape Adare

Day	Hour	Barometer No. 1155	Attd. Ther. No.	THERMOMETERS				WIND		ANEMOMETER		Weather	CLOUDS		CLOUDS		Rain or Snow	Hours Sunshine	AURORA				Kind of Cloud	Drf.	REMARKS	Initials of Observer	
				Dry Bulb No. 8163	Max. No.	Spirit Min. No. 3444	Solar Radn. No. 952	Terr. Radn. No. 3447	Direction True	Force	Miles Read		3 Min. Later	Amount	Kind	Upper			Lower	moving from	Direction	N					E
5/12/11	Wednesday	29.682 +033	37.5	20.0 M 20.1 F	—	18.1	—	17.6 M 24.7 P	NW	1	—	—	B1 G Os	8	—	—	Ch	Ext. green	0	—	—	—	—	St	0		KLV
	10am	29.662 +007	47.7	20.0 M 20.1 F	—	19.2	—	22.4 M 27.4 P	NW	1	—	—	B1 G	9	—	—	Ch	Ext. green	0	—	—	—	—	St. Cu	0	Heavy cloud cap on Cape Adare Harems obscured by snow cloud	KLV
	12am	29.594 -001	51.3	21.9 M 21.7 F	—	19.8	118.8	23.9 M 24.0 P	NW	air	—	—	Bq G	1	—	—	Ch	0	1	—	—	—	—	St. Cu	0		KLV
	2pm	29.536 -017	57.2	21.9 M 21.9 F	—	21.2	118.9	23.8 M 24.8 P	NW	1	—	—	Bq G	3	—	—	Ch	0	2	—	—	—	—	St. Cu	0		KLV
	4pm	29.482 -022	58.8	21.9 M 21.3 F	—	21.2	—	23.9 M 25.8 M	NW	1	—	—	Bq G	1	—	—	Ch	0	2	—	—	—	—	St. Cu	0	Cloud cap behind Cape Adare	KLV
	6pm	29.409 -001	51.1	21.5 M 20.9 M	—	21.1	—	31.8 P 21.7 M	W	air	—	—	Bq <sup>1</sup> C <sup>1</sup> <sub>2</sub>	1	—	—	Ch	0	2	—	—	—	—	St. Cu	0		KLV
	8pm	29.356 -014	56.2	21.0 M 18.0 M	—	20.9	—	34.1 P M	W	1	—	—	Bq <sup>3</sup> C <sup>1</sup> <sub>4</sub>	4	—	—	Ch	0	2	—	—	—	—	St. Cu	0		KLV
	10pm	29.260 +039	36.0	18.0	—	18.0	—	26.2 P	W	1	—	—	Bq G	1	—	—	Ch	0	2	—	—	—	—	St. Cu	0	Heavy cloud coming low over Cu from ESE. H. D.	KLV
6/12/11	Thursday	29.062 +050	31.9	17.2 M 16.8 F	—	10.9	—	11.8 M 20.4 P	SW	1-2	—	—	B1 G	9	—	—	Ch	0	0	—	—	—	—	St. Cu	0	Heavy cloud cap on Cape Adare	KLV
	10am	29.129 +015	45.1	19.0 M 19.6 F	—	15.9	—	16.1 M 20.5 P	S	air	—	—	B5 Cs	5	—	—	Ch	0	1/2	—	—	—	—	St. Cu	0		KLV
	12am	29.136 +007	48.0	18.6 M 18.6 F	—	17.8	109.2	20.1 M 24.8 P	W	air	—	—	B1 G	9	—	—	Ch	0	0	—	—	—	—	St. Cu	0		KLV



## BRITISH ANTARCTIC

## EXPEDITION, 1911

617th days of the Month of December

1911

Meteorological

Register kept at Cape Adare.

Day	Hour	Barometer	Attd. Ther.	THERMOMETERS				WIND		ANEMOMETER		Weather	CLOUDS		CLOUDS		Rain or Snow	Hours Sunshine	AURORA				REMARKS	Initials of Observer			
				Dry Bulb	Max.	Spirit Min.	Solar Radn.	Terr. Radn.	Direction True	Force	Miles Read		3 Min. Later	Amount	Kind	Direction moving from			Upper	Lower	N	E			S	W	
		No.	No.	No.	No.	No.	No.	No.	No.	No.	No.																
6/12/11	2pm	29.144	54.0	22.9 M	—	19.3	109.2	24.0 M	NW	3	—	B <sub>1</sub> C <sub>9</sub>	9	—	—	NW	Ch	0	0	—	—	—	—	St. Cu	0		Kew
	4pm	29.162	48.9	20.8 M	—	21.0	—	25.8 M	WNW	3-4	—	B <sub>2</sub> C <sub>9</sub>	9	—	—	—	Ch	0	0	—	—	—	—	St. Cu	0		Kew
	6pm	29.199	47.2	20.1 M	—	19.9	—	21.8 M	WNW	3	—	B <sub>2</sub> C <sub>8</sub>	8	—	—	—	Ch	0	0	—	—	—	—	Nb. Cu	0		Kew
	8pm	29.261	50.2	20.5 M	—	19.8	—	22.6 M	WNW	3	—	B <sub>3</sub> C <sub>7</sub>	7	—	—	—	Ch	0	1/4	—	—	—	—	Scud	0		Kew
	10pm	29.316	42.6	19.1 M	—	19.1	—	24.7 M	W	2-3	—	B <sub>7</sub> C <sub>3</sub>	3	—	5	N	Ch	0	2	—	—	—	—	Scud	0	Scud moving from N & S rapidly from N.	A. J.
		+0.20																									
7/12/11 Thursday	6am	29.496	40.8	22.2 M	—	16.5	—	19.6 M	WNW	2	—	B <sub>7</sub> C <sub>3</sub>	3	—	—	—	Ch	0	2	—	—	—	—	St. Cu	0		Kew
	10am	29.582	49.2	20.9 M	—	20.9	—	21.8 M	WNW	2	—	B <sub>8</sub> C <sub>2</sub>	2	—	—	SW	Ch	0	2	—	—	—	—	St. Cu	0		Kew
	12noon	29.587	43.1	22.0 M	—	20.4	109.8	20.8 M	WNW	2	—	B <sub>9</sub> C <sub>1</sub>	1	—	—	—	Ch	0	2	—	—	—	—	St. Cu	0		Kew
	2pm	29.631	51.2	22.5 M	—	22.1	109.8	23.6 M	WNW	2	—	B <sub>7</sub> C <sub>3</sub>	3	—	—	N	Ch	0	2	—	—	—	—	St. Cu	0		Kew
	4pm	29.668	52.8	23.9 M	—	23.6	—	25.5 M	WNW	2	—	B <sub>8</sub> C <sub>2</sub>	2	—	—	—	Ch	0	2	—	—	—	—	St. Cu	0	WNW radiant	Kew
	6pm	29.681	48.2	24.1	—	23.3	—	28.0 M	WNW	1-2	—	B <sub>4</sub> C <sub>6</sub>	6	—	—	—	Ch	0	2	—	—	—	—	St. Cu	0		Kew
		+0.07																									



## BRITISH ANTARCTIC

## EXPEDITION, 1910.

7th &amp; 8th days of the Month of December

1911

Meteorological

Register kept at Cape Adare

Day	Hour	Barometer	Attd. Ther.	THERMOMETERS				Terr. Radn.	WIND		ANEMOMETER		Weather	CLOUDS		Rain or Snow	Hours Sunshine	AURORA				Kind of Cloud	Drift.	REMARKS	Initials of Observer		
				Dry Bulb	Max.	Spirit Min.	Solar Radn.		Direction True	Force	Miles Read	3 Min. Later		Amount	Kind			Direction moving from		N	E					S	W
																		Upper	Lower								
		No. 1155	No.	No. 8463	No. 37	No. 3444	No. 952	No. 3445																			
7/12/11.	8pm	29.728	482	+21.9 M				24.5 M	S-aris				B <sub>2</sub> C <sub>2</sub>	8									St-stc alt-st C <sub>2</sub> St.	0	Radants (alt st & St-stc) NW	RWP	
	10pm	29.740	52.2	+21.5 M		21.9		23.0 M	S aris.				B <sub>3</sub> C <sub>7</sub>	7												RWP	
	12midnt	29.740	49.5	+21.9 M		21.5		24.1 P	22.2 M	S	2		C <sub>10</sub>	10									Nb.	0	Noise of pressure to N	c Wm	
8/12/11	2am	29.748	450	23.2 M				22.0 M	Sly E	2			O <sub>10</sub>	10									Nb.	0		D. H. D.	
	4am	29.746	42.6	23.5		22.0		23.5 P	Calm				O <sub>10</sub>	10									Nb.	0	Noise of pressure NW	D. H. D.	
	6am	29.752	41.1	23.2 M		23.2		24.0 P	Calm				O <sub>10</sub>	10									Nb.	0	Noise of pressure NW	D. H. D.	
	8am	29.790	43.2	28.2 M		22.7		26.2 P	Calm				O <sub>10</sub>	10									Nb.	0	Noise of pressure NW	D. H. D.	
	10am	29.842	53.4	28.2 M		22.7		26.2 P	Calm				O <sub>10</sub>	10									Nb.	0	Noise of pressure NW	D. H. D.	
	12noon	29.888	60.2	28.2 M		22.7		26.2 P	Calm				O <sub>10</sub>	10									Nb.	0	Noise of pressure NW	D. H. D.	
	2pm	29.928	47.9	28.2 M		22.7		26.2 P	Calm				O <sub>10</sub>	10									Nb.	0	Noise of pressure NW	D. H. D.	
	4pm	29.928	47.9	28.2 M		22.7		26.2 P	Calm				O <sub>10</sub>	10									Nb.	0	Noise of pressure NW	D. H. D.	



## BRITISH ANTARCTIC

## EXPEDITION, 1910.

5th 19th day of the Month of December

1911

Meteorological

Register kept at Cape Adare

Day	Hour	Barometer	Attd. Ther.	THERMOMETERS				WIND		ANEMOMETER		Weather	CLOUDS		CLOUDS		Rain or Snow	Hours Sunshine	AURORA				Kind of Cloud	Drift.	REMARKS	Initials of Observer
				Dry Bulb	Max.	Spirit Min.	Solar Radn.	Terr. Radn.	Direction True	Force	Miles Read		3 Min. Later	Amount	Kind	Upper			Lower	moving from	Direction	N				
		No. 1155	No.	No. 8481	No. 8482	No. 3446	No. 952	No. 3446																		
8/12/11.	4pm	29.954	56.4	31.5 M	—	31.4	—	31.6 M	Calm	—	—	O10	10	—	—	Gls	S. spec. crys.	0	—	—	—	—	Mo	0	Snow in large flakes of specules & immature crystals.	RWP
	6pm	29.899	56.0	31.5	—	29.9	—	31.5 M	E 6.9	—	—	C10	10	—	—	Gls	S. spec. crys.	0	—	—	—	—	Mo	0	Snow heavy & crystalline.	RWP
	8pm	29.912	52.1	33.5 M	—	31.0	—	32.3 M	ENE 5.8	—	—	C10	10	—	—	Gls	S. R	0	—	—	—	—	Scud Mo	0	Flakes of specules & rain.	RWP.
	10pm	29.942	48.0	29.8 M	—	29.8	—	31.0 M	ENE 6.8	—	—	C10	10	—	—	Gls	stat.	0	—	—	—	—	Mo	0	Large flakes of wet snow	H. D.
9/12/11	8am	30.058	47.8	31.2 M	—	28.8	—	29.8 M	Calm	—	—	B $\frac{1}{4}$ C $\frac{3}{4}$	9 $\frac{3}{4}$	—	—	Gls	0	0	—	—	—	—	Mo	0	A thin strip of blue sky to West	RWP
	10am	30.058	49.1	30.8	—	28.9	—	37.2 P	Calm	—	—	B $\frac{1}{4}$ C $\frac{3}{4}$	9	—	—	Gls	0	$\frac{1}{4}$	—	—	—	—	Mo St.	0	Sun breaking through, clouds dispersing.	RWP
	12noon	30.050	47.0	32.6 M	—	33.0	118.2	33.1 M	SE 2	—	—	B $\frac{1}{4}$ C $\frac{3}{4}$	4	—	NW	SE	Ch	0	2	—	—	—	Scud St.	0		H. D.
	2pm	30.056	53.5	33.0 M	—	32.8	119.4	34.0 M	S 1.2	—	—	B $\frac{3}{4}$ C $\frac{1}{4}$	7	—	—	SE	Ch	0	2	—	—	—	Scud St.	0		RWP
	4pm	30.048	53.0	33.6 M	—	32.8	—	34.5 P	W 1.2	—	—	B $\frac{2}{4}$ C $\frac{2}{4}$	8	—	—	—	Ch	0	2	—	—	—	St. Scud	0		RWP
	6pm	30.059	59.1	33.6 M	—	32.5	—	36.4 M	Calm	—	—	B $\frac{5}{4}$ C $\frac{1}{4}$	5	—	NW	SE	Ch	0	2	—	—	—	St.	0	Sun shining through haze	RWP
	8pm	30.059	64.0	32.5 M	—	31.8	—	40.2 P	Calm	—	—	B $\frac{6}{4}$ C $\frac{2}{4}$	2	—	—	SE	Ch	0	2	—	—	—	Scud St.	0		RWP.
	10pm	30.056	62.7	31.9 M	—	29.4	—	48.0 P	Calm	—	—	B $\frac{6}{4}$ C $\frac{2}{4}$	4	—	—	SE	$\frac{1}{2}$ Gls	0	$\frac{1}{2}$	—	—	—	Scud St. C.	0	Sun haze more glacier obscured by stratus. Whale-backed cloud to S	A. H.



## BRITISH ANTARCTIC

## EXPEDITION, 1910.

10th &amp; 11th days of the Month of December

1911

Meteorological

Register kept at Cape Adare.

Day	Hour	Barometer No. 1155	Attd. Ther. No.	THERMOMETERS				Terr. Radn. No. 3447	WIND		ANEMOMETER		Weather	CLOUDS		CLOUDS		Rain or Snow	Hours Sunshine	AURORA				Kind of Cloud	Drift	REMARKS	Initials of Observer	
				Dry Bulb No. 8453	Max. No.	Spirit Min. No. 3444	Solar Radn. No. 952		Direction True	Force	Miles Read	3 Min. Later		Amount	Kind	Upper	Lower			N	E	S	W					
10/12/11	8am	29.848 +0.23	41.8	27.1 M 27.9	—	27.1	—	29.1 M 31.6 P	Calm	—	—	—	O10	10	—	—	—	Glb	0	0	—	—	—	—	Nb	0	Cape Adare shrouded in dense fog	A. E.
	10am	29.857 +0.04	49.1	28.5 M 28.6	—	27.6	—	31.5 M 32.8 P	SW airo	—	—	—	O10	10	—	—	—	Glb	0	0	—	—	—	—	Nb	0	"	RWP
	12noon	29.826 +0.07	48.2	28.2 M 28.2	—	29.0	85.0	32.0 M 35.5 P	Calm	—	—	—	O10	10	—	—	—	Glb	0	0	—	—	—	—	Nb	0	"	B.
	4pm	29.828 +0.06	53.0	29.2 M 29.2	—	28.4	85.1	33.9 M 34.9 P	S airo	—	—	—	O10	10	—	—	—	Glb	0	0	—	—	—	—	Nb	0	"	RWP
	6pm	29.734 +0.06	53.0	28.8 M 28.8	—	28.4	—	32.9 M 32.9 P	Calm	—	—	—	O10	10	—	—	—	Glb	0	0	—	—	—	—	Nb	0	"	RWP
	8pm	29.742 +0.04	51.5	28.2 M 28.2	—	28.2	—	31.4 M 31.4 P	W airo	—	—	—	O10	10	—	—	—	Glb	0	0	—	—	—	—	Nb	0	"	RWP
	10pm	29.728 +0.07	48.3	26.6 M 26.6	—	26.4	—	28.9 M 28.9 P	W airo	—	—	—	O10	10	—	—	—	Glb	0	0	—	—	—	—	Nb	0	"	RWP
	12pm	29.692 +0.23	42.0	25.0 M 25.0	—	25.0	—	27.5 M 27.5 P	Calm	—	—	—	O10	10	—	—	—	Glb	0	0	—	—	—	—	Nb	0	"	D. P.D.
11/12/11	8am	29.576 +0.25	41.2	24.8 M 25.2	—	21.2	—	23.4 M 26.5 P	S airo	—	—	—	Bq 3/4 C <sub>1</sub>	1/4	—	—	—	Ch	0	2	—	—	—	—	St	0	Clear after S. breeze	RWP
	10am	29.596 +0.07	47.5	26.8 M 26.8	—	25.2	—	26.4 M 28.9 P	S airo	—	—	—	Bq 3/4 C <sub>1</sub>	1/4	—	—	—	Ch	0	2	—	—	—	—	AS	0	Fog cleared completely	RWP
	12noon	29.595 +0.06	52.6	30.5 M 31.0	—	28.1	—	28.9 M 30.9 P	S airo	—	—	—	Bq 1/2 C <sub>1</sub>	1/2	—	—	—	Ch	0	2	—	—	—	—	AS	0	"	RWP



## BRITISH ANTARCTIC

## EXPEDITION, 1910.

12<sup>th</sup> & 13<sup>th</sup> days of the Month of December

1911

Meteorological

Register kept at Cape Adare

Day	Hour	Barometer No. 1155	Attd. Ther. No.	THERMOMETERS				WIND		ANEMOMETER		Weather	CLOUDS		CLOUDS		Rain or Snow	Hours Sunshine	AURORA				REMARKS	Initials of Observer			
				Dry Bulb No. 8483	Max. No. —	Spirit Min. No. 3446	Solar Radn. No. 952	Terr. Radn. No. 3447	Direction True	Force	Miles Read		3 Min. Later	Amount	Kind	Direction moving from			Upper	Lower	N	E			S	W	
11/12/11	2pm	29.586 -014	56.1	34.3 M 34.5	—	30.3	108.1	30.8 M 35.1 P	NW	ais	—	B <sub>2</sub> C <sub>2</sub>	$\frac{1}{2}$	—	—	Ch	0	2	—	—	—	—	A.S. A. Stm	0	Fog blotting out Cape. Sun shining through Narrows here Waves of fog across the peninsula	RWP RWP RWP RWP D. H. D.	
	4pm	29.572 -014	56.2	29.0 M 28.1	—	29.0	—	35.1 M 40.1 P	NW	1	—	H5 D5	10	—	—	HW	Gls	0	2	—	—	—	—	Haye Nb.			0
	6pm	29.582 -017	57.2	27.4 M 26.9	—	26.9	—	31.8 M 34.8 P	S	ais	—	O10	10	—	—	—	Gls	0	0	—	—	—	—	Nb.			0
	8pm	29.590 -025	59.8	29.8 M 29.0 M	—	26.5	—	46.1 M 34.8 P	NW	ais	—	B <sub>2</sub> C <sub>2</sub>	$\frac{1}{2}$	—	—	—	Ch	0	1	—	—	—	—	A.S.			0
	10pm	29.600 -002	50.0	29.0	—	29.0	—	44.0 M 46.0 P	Calm	—	—	B <sub>2</sub> C <sub>1</sub>	1	—	—	—	Ch	0	2	—	—	—	—	A.S. St			0
12/12/11	8am	29.581 -015	45.2	34.6 M 34.2	—	22.8	—	24.8 M 34.8 P	Calm	—	—	B <sub>8</sub> C <sub>2</sub>	2	—	—	—	Ch	0	4	—	—	—	—	A.S. Ci A.S.	0	Radiant, radiant fit W Cloud moving slowly Sir George Nunn's Glacier misty " " " " " " " " " " " " " " " " " "	RWP RWP RWP RWP D. H. D. RWP
	10am	29.598 -007	48.2	32.9 M 33.3	—	30.8	—	31.0 M 33.0 P	Calm	—	—	B <sub>8</sub> C <sub>2</sub>	2	—	—	—	Ch	0	2	—	—	—	—	A.S. A.S.	0		
	12noon	29.608 -006	52.6	34.2 M 34.6	—	32.8	119.8	32.9 M 38.1 P	Calm	—	—	B <sub>3</sub> C <sub>7</sub>	7	—	—	—	Ch	0	0	—	—	—	—	St.	0		
	2pm	29.615 -017	57.2	34.8 M 34.8	—	34.1	130.3	35.7 M 41.2 P	Calm	—	—	B <sub>1</sub> C <sub>9</sub>	9	—	—	—	$\frac{1}{2}$ Gls	0	0	—	—	—	—	Cu. Nb. St. Cu. Scud	0		
	4pm	29.620 -004	52.0	33.8 M 33.8	—	33.8	—	38.0 P 33.5 M	SW	ais	—	B <sub>2</sub> C <sub>9</sub>	$9\frac{1}{2}$	—	—	SE	$\frac{1}{2}$ Gls	0	0	—	—	—	—	Scud Nb.	0		
	6pm	29.642 -004	52.0	32.5	—	32.0	—	34.0 P	NW	ais	—	B <sub>2</sub> C <sub>9</sub>	$9\frac{1}{2}$	—	—	SE	Gls	0	0	—	—	—	—	Nb.	0		



## BRITISH ANTARCTIC

## EXPEDITION, 1910.

12<sup>th</sup> & 13<sup>th</sup> days of Month of December

1911

Meteorological

Register kept at Cape Adare

Day	Hour	Barometer No.	Attd. Ther. No.	THERMOMETERS				WIND		ANEMOMETER		Weather	CLOUDS		Direction moving from	Rain or Snow	Hours Sunshine	AURORA				Kind of Cloud	Drift	REMARKS	Initials of Observer			
				Dry Bulb No.	Max. No.	Spirit Min. No.	Solar Radn. No.	Terr. Radn. No.	Direction True	Force	Miles Read		3 Min. Later	Amount				Kind	Upper	Lower	N					E	S	W
		No. 1155	No.	No. 5633	No. -	No. 3444	No. 952	No. 3445																				
12/12/11.	8pm	29.660 +0.04	49.0	32.2 M 32.4	-	32.0	-	32.5 M	ESE	4-6	-	B <sub>2</sub> O <sub>9</sub> 1/2	9 1/2	-	-	SE	Obs	0	0	-	-	-	-	Nb St. cl A.S.	0			RWP
	10pm	29.651 +0.17	44.5	33.0 M	-	31.2	-	37.0 P	ESE	2-5	-	B <sub>2</sub> C <sub>8</sub>	8	-	-	-	Ch	0	0	-	-	-	-		0	Sun shining brightly.		D. H.D.
13/12/11.	8am	29.610 +0.15	44.9	29.8 M 30.4	-	26.0	-	25.8 M 30.2 P	Calm	-	-	B <sub>8</sub> C <sub>2</sub>	2	-	-	SE	Ch	0	4?	-	-	-	-	Ca Scud St	0			RWP
	10am	29.625 +0.07	48.5	32.4 M 32.4	-	28.9	-	29.4 M 33.1 P	SW	1-0	-	B <sub>8</sub> C <sub>2</sub>	2	-	-	-	Ch	0	2	-	-	-	-	Scud	0			RWP
	12noon	29.619 -0.04	52.4	32.1 M 32.6	-	31.9	120.8	32.0 M 32.8 P	SW	1-0	-	B <sub>8</sub> C <sub>2</sub>	2	-	-	-	Ch	0	2	-	-	-	-	Scud A.S.	0			RWP
	2pm	29.614 -0.22	59.0	33.4 M 34.0	-	32.0	120.8	33.0 M 34.9 P	SW	1-2	-	B <sub>8</sub> C <sub>2</sub>	2	-	-	S	Ch	0	2	-	-	-	-	Scud A.S.	0			RWP
	4pm	29.600 -0.25	60.0	32.5 M 32.0	-	32.5	-	34.0 M 37.9 P	S	ais	-	B <sub>8</sub> C <sub>2</sub>	2	-	-	-	Ch	0	2	-	-	-	-	St. St.	0			D. H.D.
	6pm	29.592 +0.07	48.0	32.5 M 32.0	-	32.5	-	34.0 M 37.0 P	WNW	1	-	B <sub>8</sub> C <sub>2</sub>	1	-	-	S	Ch	0	2	-	-	-	-	Scud	0			D. H.D.
	8pm	29.574 -0.22	59.4	32.3 M 31.9	-	31.8	-	50.5 M 50.8 P	Calm	-	-	B <sub>8</sub> C <sub>2</sub>	2	-	-	S	Ch	0	2	-	-	-	-	Scud St	0			RWP
	10pm	29.539 -0.06	52.8	30.1 M 29.8	-	30.1	-	46.5 M 50.8 P	Calm	-	-	B <sub>8</sub> C <sub>2</sub>	1/2	-	-	-	Ch	0	2	-	-	-	-	Scud	0			RWP



## BRITISH ANTARCTIC

## EXPEDITION, 1910.

14<sup>th</sup> & 15<sup>th</sup> days of the Month of December

1911

Meteorological

Register kept at Cape Udane

Day	Hour	Barometer	Attd. Ther.	THERMOMETERS				WIND		ANEMOMETER		Weather	CLOUDS		CLOUDS		Rain or Snow	Hours Sunshine	AURORA				Kind of Cloud	Drift	REMARKS	Initials of Observer			
				Dry Bulb	Max.	Spirit Min.	Solar Radn.	Terr. Radn.	Direction True	Force	Miles Read		3 Min. Later	Amount	Kind	Direction moving from			Upper	Lower	N	E					S	W	
																No.													No.
No.	No.	No.	No.	No.	No.	No.	No.	No.	No.	No.	No.	No.	No.	No.	No.	No.	No.	No.	No.	No.	No.	No.	No.	No.	No.				
14/12/11	8am	29.454	44.1	29.3 M	—	25.5	—	25.3 M	WNW	ais	—	B <sub>5</sub> C <sub>8</sub>	5	—	—	S	Ch	0	?	—	—	—	—	St.	0		RWP		
	10am	29.508	50.3	31.7 M	—	29.2	—	31.8 M	Calm	—	—	B <sub>5</sub> C <sub>5</sub>	5	—	—	—	Ch	0	?	—	—	—	—	St.	0		RWP		
	12noon	29.500	45.2	33.2 M	—	31.6	117.2	32.9 M	WNW	2-3	—	B <sub>2</sub> C <sub>8</sub>	8	—	—	—	Ch	Salt gran	?	—	—	—	—	St.	0	Becoming overcast.	RWP		
	2pm	29.522	52.4	33.2 M	—	32.3	112.5	34.8 M	WNW	1-2	—	B <sub>7</sub> C <sub>3</sub>	3	—	—	—	Ch	0	?	—	—	—	—	St.	0	Clear from West.	RWP		
	4pm	29.506	51.0	31.9 M	—	30.4	—	35.7 M	WNW	1	—	B <sub>2</sub> C <sub>4</sub>	9 1/2	—	—	—	Ch	0	0	—	—	—	—	St.	0		RWP		
	6pm	29.500	48.0	32.0 M	—	31.0	—	34.5 M	Calm	—	—	B <sub>2</sub> C <sub>8</sub>	8	—	—	S	Ch	0	1	—	—	—	—	Sand	0	Sun shining	D. H. D.		
	9pm	29.508	56.5	29.1 M	—	29.1	—	35.3 M	Calm	—	—	B <sub>7</sub> C <sub>3</sub>	3	—	—	S	Ch	0	2	—	—	—	—	Sand	0		RWP		
	10pm	29.495	50.8	28.9 M	—	28.2	—	29.7 M	NW	ais.	—	B <sub>2</sub> C <sub>8</sub>	8	—	—	—	Ch	0	?	—	—	—	—	St.	0		RWP		
15/12/11	8am	29.465	42.2	27.7 M	—	26.0	—	26.4 M	S	ais	—	B <sub>8</sub> C <sub>2</sub>	2	—	—	—	Ch	0	4	—	—	—	—	St. Cn.	0		RWP		
	10am	29.491	51.3	34.1 M	—	27.6	—	28.3 M	S	ais	—	B <sub>7</sub> C <sub>3</sub>	3	—	SE	—	Ch	0	2	—	—	—	—	St. Cn.	0		RWP		
	12noon	29.508	52.9	34.0 M	—	31.4	108.9	31.2 M	Calm	—	—	B <sub>9</sub> C <sub>4</sub>	1	—	—	—	Ch	0	2	—	—	—	—	St.	0		RWP		



## BRITISH ANTARCTIC

## EXPEDITION, 1910.

15<sup>th</sup> & 16<sup>th</sup> days of the Month of December

1911

Meteorological

Register kept at Cape Adare

Day	Hour	Barometer No. 1155	Attd. Ther. No.	THERMOMETERS				Direction True	Force	ANEMOMETER		Weather	CLOUDS		CLOUDS		Rain or Snow	Hours Sunshine	AURORA				Kind of Cloud	REMARKS	Initials of Observer
				Dry Bulb No. 8483	Max. No.	Spirit Min. No. 3446	Solar Radn. No. 952			Terr. Radn. No. 3447	Miles Read		3 Min. Later	Amount	Kind	Upper			Lower	N	E	S			
15/12/11	2pm	29.525 -0.20	57.5	32.9m 33.0	31.0	110.9	32.2m 33.1 P	SE	1	—	B <sub>8</sub> C <sub>2</sub>	2	—	—	Ch	0	2	—	—	—	—	C.S.	Ce forming against SE C adare	RWP	
	4pm	29.545 -0.14	56.5	32.1m 32.0	—	32.1	—	S	airs	—	B <sub>8</sub> C <sub>2</sub>	2	—	NW	—	Ch	0	2	—	—	—	—	C.S. St.	Clouds from NW fast.	RWP
	6pm	29.567 -0.20	58.2	31.7m 31.7	—	31.5	—	W	airs	—	B <sub>7</sub> C <sub>3</sub>	3	—	NW	—	Ch	0	2	—	—	—	—	Seuch C.	Turret clouds on C.G. S. L. & A.R.	RWP
	8pm	29.576 -0.20	58.1	31.0m 29.0m	—	31.0	—	Calm	—	—	B <sub>8</sub> C <sub>2</sub>	2	—	—	SE	Ch	0	2	—	—	—	—	Cu-Mb.	—	RWP
	10pm	29.597 -0.08	54.1	28.7	—	29.0	—	SE	airs	—	B <sub>8</sub> C <sub>2</sub>	2	—	—	S	Ch	0	2	—	—	—	—	St. Seuch	Movement of linear clouds just perceptible.	A. E.
16/12/11	8am	29.676 -0.12	46.2	31.9m 31.9	—	22.5	—	Calm	—	—	B <sub>7</sub> C <sub>3</sub>	3	—	—	SE	Ch	0	4	—	—	—	—	Ce-St.	—	RWP
	10am	29.717 -0.04	48.6	33.0m 33.0	—	31.6	—	NW	1-2	—	B <sub>6</sub> C <sub>4</sub>	4	—	—	—	Ch	0	2	—	—	—	—	Ce St.	Radiant WNW	RWP
	12noon	29.772 -0.14	55.6	32.4m 32.8	—	32.0	113.8	N	1-2	—	B <sub>1</sub> H <sub>2</sub> O <sub>7</sub>	9	—	—	N	Ch	0	1	—	—	—	—	Seuch	Clouding from North	RWP
	2pm	29.800 -0.20	58.5	31.0m 30.9	—	31.0	120.6	S	1-2	—	O <sub>10</sub>	10	—	—	—	Gb	0	2	—	—	—	—	Nb	Thickened very much	RWP
	4pm	29.814 -0.08	54.2	28.7m 29.0	—	27.9	—	N	airs	—	O <sub>10</sub>	10	—	—	N	Gb	0	—	—	—	—	—	Seuch	Snow squalls S & SW	RWP
	6pm	29.844 -0.17	56.8	28.3	—	28.1	—	S	airs	—	C <sub>10</sub>	10	—	—	—	Gb	—	0	—	—	—	—	Nb	—	RWP



## BRITISH ANTARCTIC

## EXPEDITION, 1910.

16<sup>th</sup> & 17<sup>th</sup> days of Month of December

1911

Meteorological

Register kept at Cape Adare

Day	Hour	Barometer No.	Attd. Ther. No.	THERMOMETERS				WIND		ANEMOMETER		Weather	CLOUDS		Rain or Snow	Hours Sunshine	AURORA				Kind of Cloud	Drift	REMARKS	Initials of Observer		
				Dry Bulb No.	Max. No.	Spirit Min. No.	Solar Radn. No.	Terr. Radn. No.	Direction True	Force	Miles Read		3 Min. Later	Amount			Kind	Upper	Lower	Direction moving from					N	E
		No. 1155	No.	No. 8453	No. —	No. 3444	No. 952	No. 3445																		
16/12/11	8pm	29.870	54.9	28.1 M	—	28.1	—	29.8 P	Calm	—	—	C10	10	—	—	Obs	0	0	—	—	—	—	St. Sc Cu	0		RWP
	10pm	29.834	51.0	28.0 M	—	28.0	—	29.0 P	Calm	—	—	B <sub>2</sub> C <sub>9</sub> <sup>3</sup> / <sub>4</sub>	9 <sup>3</sup> / <sub>4</sub>	—	—	Obs	5 large grain	?	—	—	—	—	Nb	0	Sun shining in South.	D H.D.
17/12/11	2am	29.840	41.3	27.0 M	—	26.8	—	27.8 M	Calm	—	—	B <sub>2</sub> C <sub>8</sub>	8	—	W	SE 1/2 Obs	0	0	—	—	—	—	Scud St. Cu	0	Warming Kew obscured	A E.
	4am	29.840	40.0	27.2 M	—	20.4	—	22.6 M	Calm	—	—	B <sub>6</sub> C <sub>4</sub>	4	—	—	S Obs	0	0	—	—	—	—	Scud St. Cu	0	Local fog	A E.
	6am	29.840	35.0	17.0 M	—	14.8	—	18.0 M	Calm	—	—	B <sub>6</sub> C <sub>3</sub> F	4	—	—	S Obs	0	2	—	—	—	—	Scud St. Cu	0	Low fog bank, clear overhead	D H.D.
	8am	29.840	40.0	20.2 M	—	19.0	—	19.2 M	Calm	—	—	B <sub>7</sub> C <sub>2</sub> F	3	—	—	S Obs	0	2+x	—	—	—	—	Nb. St. Cu	0	Fog clearing rapidly	L RWP
	10am	29.848	48.1	26.3 M	—	19.8	—	20.5 M	Calm	—	—	B <sub>9</sub> <sup>1</sup> / <sub>2</sub> C <sub>2</sub> <sup>1</sup> / <sub>2</sub>	1/2	—	—	S Obs	0	2	—	—	—	—	Scud	0	Cloud cap on C Adare	RWP
	12mm	29.843	50.0	24.0 M	—	26.6	113.8	25.8 M	Calm	—	—	B <sub>9</sub> <sup>3</sup> / <sub>4</sub> C <sub>1</sub> <sup>1</sup> / <sub>4</sub>	1/4	—	—	S Obs	0	2	—	—	—	—	Scud	0	Scud on C Adare	RWP
	2pm	29.844	53.7	30.1 M	—	28.4	113.8	27.7 M	WNW 1-2	—	—	B <sub>8</sub> C <sub>2</sub>	2	—	—	NW Obs	0	2	—	—	—	—	St. Scud St. Cu	0	Fog forming from NW	RWP
	4pm	29.828	56.1	29.8 M	—	29.4	—	29.8 M	Calm	—	—	B <sub>9</sub> <sup>1</sup> / <sub>2</sub> C <sub>1</sub> <sup>1</sup> / <sub>2</sub>	1/2	—	—	NW Obs	0	2	—	—	—	—	Scud	0	Clear again	RWP



## BRITISH ANTARCTIC

18<sup>th</sup> & 18<sup>th</sup> days of the Month of December

1911

*Meteorological*

## EXPEDITION, 1910.

Register kept at Cape Adare

Day	Hour	Barometer No. 1155	Attd. Ther. No.	THERMOMETERS				WIND		ANEMOMETER		Weather	CLOUDS		CLOUDS		Rain or Snow	Hours Sunshine	AURORA				Kind of Cloud	Height of Cloud	REMARKS	Initials of Observer	
				Dry Bulb	Max.	Spirit Min.	Solar Radn.	Terr. Radn.	Direction True	Force	Miles Read		3 Min. Later	Amount	Kind	Direction moving from			Lower	N	E	S					W
				No. 8488	No. -	No. 3446	No. 952	No. 3447								Upper			Lower								
17/12/11	6pm	29.808	57.1	29.6 M	-	29.4	-	337 M				Calm	-	-	NW	1/2 Gls	0	2	-	-	-	-	St. Sand	0	Cloudy from NW	RWP	
	8pm	29.809	56.9	28.1 M	-	27.9	-	300 M				WNW	1	-	-	Ch	0	1/4	-	-	-	-	St. Cu	0	Clear	RWP	
	10pm	29.744	48.5	27.5 M	-	27.5	-	28.7 M				WNW	1	-	-	Ch	0	0	-	-	-	-	St. Cu	0	No change	RWP	
18/12/11	8am	29.659	34.1	24.5 M	-	24.2	-	25.6 M				WNW	1-3	-	-	Gls	0	0	-	-	-	-	Nb. St.	0	Thick to South	RWP	
	10am	29.714	50.3	25.6 M	-	24.3	-	27.4 M				WNW	1	-	-	1/2 Gls	0	0	-	-	-	-	Nb.	0		RWP	
	12noon	29.724	53.4	26.3 M	-	25.4	83.2	25.6 M				WNW	10	-	-	1/2 Gls	0	0	-	-	-	-	St. Cu	0		RWP	
	2pm	29.711	50.3	26.9 M	-	26.3	83.4	29.4 M				WNW	aus	-	-	1/2 Gls	0	0	-	-	-	-	St. Cu	0		RWP	
	4pm	29.684	48.0	27.2 M	-	26.1	-	32.0 M				WNW	1	-	-	1/2 Gls	0	0	-	-	-	-	Nb. St.	0		RWP	
	6pm	29.700	50.5	27.8 M	-	27.0	-	32.5 M				Calm	-	-	-	1/2 Gls	0	0	-	-	-	-	St.	0	Sun shining through haze	D. J. D.	
	8pm	29.681	48.2	27.0 M	-	26.8	-	33.0 P				W	aus	-	-	1/2 Gls	0	0	-	-	-	-	Nb.	0		RWP	
	10pm	29.688	48.0	27.1 M	-	24.8	-	32.1 M				Calm	-	-	-	Ch	0	2	-	-	-	-	St. Haze	0		RWP	



## BRITISH ANTARCTIC

## EXPEDITION, 1910.

19th &amp; 20th day of the Month of December

1911

Meteorological

Register kept at Cape Adare

Day	Hour	Barometer No. 1155	Attd. Ther. No.	THERMOMETERS				WIND		ANEMOMETER		Weather	CLOUDS		CLOUDS		Rain or Snow	Hours Sunshine	AURORA				Kind of Cloud	Drift	REMARKS	Initials of Observer
				Dry Bulb No. 8158	Max. No. —	Spirit Min. No. 3464	Solar Radn. No. 952	Terr. Radn. No. 3447	Direction True	Force	Miles Read		3 Min. Later	Amount	Kind	Upper			Lower	N	E	S				
19/12/11	8am	29.640	48.9	31.3m	—	24.5	—	26.8m	S	2.5	—	O10	10	—	—	Gls	S alt spici	0	—	—	—	—	Nb Haze	0	Sun just showing. Mtns & Haze Gls	RWP
	10am	29.668	51.5	31.3m	—	29.0	—	30.2m	SE	3.7	—	O10	10	—	—	Gls	S alt spici	0	—	—	—	—	Nb Haze	0	"	RWP
	12noon	29.630	52.0	35.3m	—	32.2	83.2	34.1m	SE	4.7	—	O10	10	—	—	Gls	0	0	—	—	—	—	Nb Scud	0	Sun gone	RWP
	3pm	29.641	55.0	32.6m	—	32.8	83.2	34.2m	SE	2.5	—	O10	10	—	—	Gls	S spici	0	—	—	—	—	Nb Sc	0	"	RWP
	4pm	29.619	54.5	31.0m	—	30.2	—	31.8m	ESE	2.4	—	O10	10	—	—	Gls	S spici	0	—	—	—	—	Nb	0	"	RWP
	6pm	29.594	54.0	31.0m	—	29.0	—	30.5m	ESE	4.6	—	O10	10	—	—	Gls	S spici	0	—	—	—	—	Nb	0	"	D. H.D.
	8pm	29.548	52.9	29.5m	—	29.2	—	29.9m	E	4.8	—	O10	10	—	—	Gls	S spici	0	—	—	—	—	Nb	0	"	RWP
	10pm	29.550	47.0	30.5m	—	28.0	—	30.0m	ESE	4.6	—	O10	10	—	—	Gls	S spici	0	—	—	—	—	Nb	0	"	D. H.D.
20/12/11	8am	29.496	44.9	31.6m	—	26.8	—	29.1m	ESE	4.5	—	O10	10	—	—	Gls	S alt spici	0	—	—	—	—	Nb	0	Snow squall to West	RWP
	10am	29.530	52.5	32.2m	—	30.8	—	32.1m	ESE	4.5	—	C10	10	—	—	Gls	0	0	—	—	—	—	Nb	0	Sun definition in clouds	RWP
	12noon	29.554	54.9	32.5m	—	30.6	—	32.8m	ESE	4.5	—	C10	10	—	—	1/2 Gls	0	0	—	—	—	—	Nb	0	Warming Haze. Clear	RWP



## BRITISH ANTARCTIC

## EXPEDITION, 1910.

20<sup>th</sup> & 21<sup>st</sup> days of the Month of December

1911

Meteorological

Register kept at Cape Adare.

Day	Hour	Barometer	Attd. Ther.	THERMOMETERS				WIND		ANEMOMETER		Weather	CLOUDS		CLOUDS		Rain or Snow	Hours Sunshine	AURORA				Kind of Cloud	Drift	REMARKS	Initials of Observer	
				Dry Bulb	Max.	Spirit Min.	Solar Radn.	Terr. Radn.	Direction True	Force	Miles Read		3 Min. Later	Amount	Kind	Direction moving from			N	E	S	W					
																Upper											Lower
		No. 1155	No.	No. 8483	No. —	No. 3446	No. 952	No. 3447																			
20/12/11	7pm	29.576	56.8	33.1 M	—	30.4	76.0	32.4 M	SE	1-3	—	A1 Cy	10	—	—	1/2 Gls	0	0	—	—	—	—	St. Nb.	0	Mountains beginning to show. Cloudy. Cleared a good deal. No movement in clouds.	RWP	
	4pm	29.606	57.0	34.1 M	—	31.0	—	33.8 M	S	2-4	—	B6 G H1	4	—	—	1/2 Gls	0	1	—	—	—	—	St. St. Nb.	0			
	6pm	29.670	52.9	31.7 M	—	31.6	—	35.1 M	S	1-3	—	B8 G2	2	—	S	Ch	0	2	—	—	—	—	St. St. Nb.	0			
	8pm	29.706	58.0	30.1 M	—	30.1	—	34.3 M	S	1	—	B1/2 G 1/2	9 1/2	—	—	Ch	0	1 1/4	—	—	—	—	St	0			
	10pm	29.727	54.2	29.5 M	—	29.8	—	30.1 M	Calm	—	—	B1/2 G 1/2	9 1/2	—	—	Ch	Salt Ephem	0	—	—	—	—	St	0			
21/12/11	8am	29.674	46.0	28.5 M	—	27.6	—	28.8 M	W	airs	—	C10	10	—	—	Ch	0	0	—	—	—	—	St. Nb.	0	Glaciers & Mtns obscured. Cape Adare indistinct. Mountains dimly showing. Warning Glacier clear. Clearing to South.	RWP	
	10am	29.675	50.4	27.9 M	—	27.9	—	30.1 M	S	airs	—	O10	10	—	—	Gls	S. Hu gran	0	—	—	—	—	Nb	0			
	12noon	29.677	54.9	27.8 M	—	26.8	76.0	29.4 M	Calm	—	—	O10	10	—	—	Gls	S. Hu gran	0	—	—	—	—	Nb	0			
	2pm	29.674	52.8	28.3 M	—	27.5	76.0	30.2 M	WNW	airs	—	B1 G	9	—	—	Gls	S. Hu gran	0	—	—	—	—	St. Nb.	0			
	4pm	29.679	50.6	28.3 M	—	28.2	—	31.8 M	Calm	—	—	C10	10	—	—	1/2 Gls	S. Hu gran	0	—	—	—	—	Nb	0			
	6pm	29.676	48.1	28.0 M	—	28.9	—	30.5 M	Calm	—	—	C10	10	—	—	1/2 Gls	0	0	—	—	—	—	St	0			



## BRITISH ANTARCTIC EXPEDITION, 1910.

21st &amp; 22nd days of the Month of December

1911

Meteorological

Register kept at Cape Udan

Day	Hour	Barometer	Attd. Ther.	THERMOMETERS				WIND		ANEMOMETER		Weather	CLOUDS		CLOUDS		Rain or Snow	Hours Sunshine	AURORA				Kind of Cloud	Drift	REMARKS	Initials of Observer	
				Dry Bulb	Max.	Spirit Min.	Solar Radn.	Terr. Radn.	Direction True	Force	Miles Read		3 Min. Later	Amount	Kind	Upper			Lower	N	E	S					W
		No. 1155	No.	No. 8483	No.	No. 3444	No. 952	No. 3447																			
21/12/11	8pm	29.664	48.1	27.7M 27.9	—	27.7	—	30.2M 32.2P 32.0M	NW	aur	—	B1Cg	9	—	—	—	Ch	0	0	—	—	—	—	Scud St	0	Clearing to South	RWP
	10pm	29.668	48.0	27.7M 27.8	—	27.7	—	36.2P	Calm	—	—	B3Cg	7	—	—	5	Ch	0	0	—	—	—	—	Scud St Gr St	0	Sun S. Neurus glauca slightly obscured	A B
22/12/11	8am	29.676	46.2	28.9M 29.3M	—	23.9	—	24.8M 30.2P 30.0M	S	3-4	—	B2Cg	8	—	—	—	1/2 Gls	0	0	—	—	—	—	St NB Sc	0	Sun S. Neurus glauca obscured	RWP
	10am	29.726	47.3	29.6M 28.6M	—	28.2	—	31.2P 30.6M	S	3-4	—	B1Cg	9	—	—	—	1/2 Gls	0	0	—	—	—	—	NB St	0		RWP
	12noon	29.760	51.6	28.9M 31.5M	—	28.5	74.0	31.3P 31.3M	S	3-4	—	B1Cg	9	—	—	—	1/2 Gls	0	0	—	—	—	—	NB Hugs	0	Snow falling west & north to South	RWP
	2pm	29.784	56.8	31.8M 29.6M	—	28.6	95.0	34.4P 31.5M	SSE	3-4	—	B1H1Cg	9	—	—	—	1/2 Gls	0	0	—	—	—	—	St NB St Scud	0	Sun shining through haze. Clearing	RWP
	4pm	29.807	52.1	29.8M 29.5M	—	29.6	—	31.7P 31.5M	S	4-5	—	B3Cg	7	—	—	—	1/2 Gls	0	0	—	—	—	—	Gr Gr St Scud	0	Clearing everywhere	RWP
	6pm	29.830	52.8	29.9M 29.1M	—	29.2	—	32.9P 30.9M	S	4-5	—	B4Cg	6	—	—	NW	1/2 Gls	0	0	—	—	—	—	Gr St Gr Gr St	0	Clearing	RWP
	8pm	29.852	53.3	29.8M 28.2M	—	28.2	—	36.0P	S	3-4	—	B5Cs	5	—	—	—	1/2 Gls	0	1	—	—	—	—	Scud Gr Gr St	0		RWP
	10pm	29.872	47.0	28.5M	—	28.0	—	29.0P	S	2-3	—	B2Cg	8	—	—	—	1/2 Gls	0	?	—	—	—	—	Scud St Gr	0	Sun shining through clouds	RWP



# BRITISH ANTARCTIC EXPEDITION, 1910.

23rd & 24th days of the Month of December

1911

Meteorological

Register kept at Cape Adare

Day	Hour	Barometer No. 1155	Attd. Ther. No.	THERMOMETERS				WIND		ANEMOMETER		Weather	CLOUDS		CLOUDS		Rain or Snow	Hours Sunshine	AURORA				Kind of Cloud	Drift	REMARKS	Initials of Observer
				Dry Bulb No. 8483	Max. No.	Spirit Min. No. 3444	Solar Radn. No. 952	Terr. Radn. No. 3447	Direction True	Force	Miles Read		3 Min. Later	Amount	Kind	Direction moving from			Upper	Lower	Erosus Smoke	N				
23/12/11.	8am	29.872 +0.36	36.9	26.1 M 25.9	—	25.9	—	27.2 M 31.1 P	N air	—	—	B1C108	9	—	—	26.6	5.00	0	—	—	—	—	St.	0	Cape Adare indistinct	R.W.
	10am	29.915 +0.15	45.3	27.9 M 26.1	—	25.9	—	30.5 M 35.0 P	NW air	—	—	B1C9	9	—	—	26.6	0	0	—	—	—	—	St. St. Cl.	0	Cloud a good deal	R.W.
	12noon	29.928 +0.15	45.0	28.1 M 28.0	—	27.9	—	32.2 M 30.5 M	Calm	—	—	B2C8	8	—	S	Ch	5.00	0	—	—	—	—	St. St. Cl.	0		A.E.
	2pm	29.943 +0.01	51.0	29.7 M 30.3	—	27.5	104.5	31.1 P 31.0 M	S air	—	—	B8C2	2	—	—	Ch	0	1	—	—	—	—	St.	0		R.W.
	4pm	29.964 +0.07	48.5	30.8 30.1 M	—	29.5	114.8	39.2 P 30.1 M	S air	—	—	B4C6	6	—	S	Ch	0	1	—	—	—	—	St. Cl.	0		D.H.D.
	6pm	29.980 +0.17	56.7	30.0 29.2 M	—	30.1	—	35.4 P 31.1 M	Calm	—	—	B1C9	9	—	S	Ch	0	0	—	—	—	—	St. Cl.	0		R.W.
	8pm	29.998 +0.22	58.9	29.5 28.3 M	—	29.1	—	31.2 P 28.3 M	Calm	—	—	B2C9 1/2	9 1/2	—	—	Ch	0	0	—	—	—	—	St.	0		R.W.
	10pm	30.004 +0.08	54.0	28.2	—	28.3	—	28.9 F	S 1	—	—	B 1/2 C 9 1/2	9 1/2	—	—	Ch	0	0	—	—	—	—	St. Cl.	0		A.E.
24/12/11	8am	29.934 +0.25	41.2	24.7 M 24.7	—	24.1	—	25.1 M 26.8 P	S 1	—	—	O10	10	—	—	Ob	5.00	0	—	—	—	—	Nb.	0		A.E.
	10am	29.978 +0.02	49.6	25.4 M 25.8	—	24.4	—	26.2 M 28.1 P	S 1	—	—	O10	10	—	—	Ob	0	0	—	—	—	—	Nb.	0		R.W.
	12noon	29.957 +0.10	46.9	25.0 M 25.2	—	24.6	—	27.6 M 28.4 P	S 1	—	—	B1C9	9	—	—	Ch	0	0	—	—	—	—	St. Cl.	0	Mountain clearing & glacier ch.	R.W.



## BRITISH ANTARCTIC

## EXPEDITION, 1910.

24<sup>th</sup> & 25<sup>th</sup> days of the Month of December

1911

Meteorological

Register kept at Cape Adare

Day	Hour	Barometer No. 1155	Attd. Ther. No.	THERMOMETERS				WIND		ANEMOMETER		Weather	CLOUDS		CLOUDS		Rain or Snow	Hours Sunshine	AURORA				Kind of Cloud	Drift.	REMARKS	Initials of Observer	
				Dry Bulb No. 8183	Max. No. —	Spirit Min. No. 3444	Solar Radn. No. 952	Terr. Radn. No. 3445	Direction True	Force	Miles Read		3 Min. Later	Amount	Kind	Upper			Lower	Direction moving from	Clouds	N					E
24/12/11	2pm	29.960	49.8	26.0 m 26.5	—	24.9	78.3	28.1 P	S	airs	—	By C3	3	—	—	—	Ch	0	1/2	—	—	—	—	St. Cln	0	Clearing from the South	RWP
	4pm	29.983	60.0	27.0 m 27.1	—	25.9	—	27.6 P	S	airs	—	Bq G	1	—	—	S	Ch	0	2	—	—	—	—	St. Cln	0		RWP
	6pm	29.954	48.2	27.2 m 26.9	—	26.8	—	32.5 M 44.9 P	S	airs	—	Bq G	1	—	—	S	Ch	0	2	—	—	—	—	St. Cln	0		RWP
	8pm	29.953	52.0	25.9 m 25.6	—	25.5	—	41.9 M 44.9 P	S	airs	—	Bq 1/2 C 1/2	1/2	—	—	S	Ch	0	2	—	—	—	—	St. Cln	0		RWP
	10pm	29.951	49.0	22.6 m 22.5	—	22.6	—	M 30.5 P	S	1	—	Bb C4	4	—	—	S	Ch	0	1 hr 50 min	—	—	—	—	St. Cln	0	Fog blowing gently from southward A. B.	RWP
25/12/11	8am	29.868	38.0	25.2 m 25.2	—	16.4	—	25.1 P	SSE	1	—	Bq G	1	—	—	—	Ch	0	all time	—	—	—	—	St. Cln	0		A. B.
	10am	29.899	47.5	26.6 m 26.9	—	25.9	—	24.7 M 26.4 P	S	airs	—	Bq 1/2 C 1/2	1/2	—	—	—	Ch	0	2	—	—	—	—	St. Cln	0		RWP
	12pm	29.866	43.8	28.2 m 28.9	—	26.3	108.3	26.5 M 28.7 P	SSE	airs	—	Bq G	1	—	—	—	Ch	0	2	—	—	—	—	St. Cln	0		RWP
	2pm	29.870	48.1	28.5 m 29.0	—	26.1	109.8	28.6 M 30.6 P	S	airs	—	Bq G	1	—	—	—	Ch	0	2	—	—	—	—	St. Cln	0		D. B.
	4pm	29.884	50.0	29.0 m 30.0	—	28.0	—	29.5 M 40.0 P	NW	airs	—	By C3	3	—	—	S	Ch	0	2	—	—	—	—	St. Cln	0		D. B.
	6pm	29.880	48.0	29.2 m 28.5	—	29.2	—	39.0 M 45.0 P	W	airs	—	By C3	3	—	—	ESE	Ch	0	2	—	—	—	—	St. Cln	0		RWP



## BRITISH ANTARCTIC

## EXPEDITION, 1910.

25<sup>th</sup> & 26<sup>th</sup> day of the Month of December

1911

Meteorological

Register kept at Cape Adare.

Day	Hour	Barometer	Attd. Ther.	THERMOMETERS				WIND		ANEMOMETER		Weather	CLOUDS		CLOUDS		Rain or Snow	Hours Sunshine	AURORA				Kind of Cloud	Draft	REMARKS	Initials of Observer
				Dry Bulb	Max.	Spirit Min.	Solar Radn.	Terr. Radn.	Direction True	Force	Miles Read		3 Min. Later	Amount	Kind	Upper			Lower	N	E	S				
		No. 1155	No.	No. 8483	No. —	No. 3444	No. 952	No. 3447																		
25/12/11	8pm	29.874 -0.04	52.4	25.9 m 26.2	—	25.9	—	44.9 m 47.5 P	Calm	—	—	B & C <sub>2</sub>	2	—	—	Ch	0	2	—	—	—	—	St Scud	0	Rev	
	10pm	29.872 -0.04	52.5	24.5 m 24.5	—	24.5	—	44.0 m 45.5 P	Calm	—	—	B & C <sub>2</sub>	2	—	—	Ch	0	2	—	—	—	—	St Scud	0	D. H.D.	
26/12/11	8am	29.834 +0.20	42.9	26.2 m 26.5	—	15.9	—	19.8 m 26.3 P	Calm	—	—	B <sub>9</sub> C <sub>4</sub>	1/4	—	—	Ch	0	all time	—	—	—	—	Scud	0	Rev.	
	10am	29.859 -0.20	57.9	26.0 m 26.8	—	26.1	—	26.2 m 28.1 P	S	airs	—	B <sub>9</sub> C <sub>4</sub>	1/4	—	—	Ch	0	2	—	—	—	—	Scud	0	Rev	
	12noon	29.847 +0.10	47.1	29.2 m 29.2	—	27.9	107.8	27.7 m 29.8 P	S	airs	—	B <sub>9</sub> C <sub>1</sub>	1	—	—	S	Ch	0	2	—	—	—	—	St Scud	0	Rev
	2pm	29.850 -0.02	50.0	29.8 m 29.8	—	29.0	—	29.5 m 35.8 P	S	airs	—	B <sub>3</sub> C <sub>7</sub>	7	—	—	1/2 Gb	0	2	—	—	—	—	St Nb	0	D. H.D.	
	4pm	29.872 -0.11	55.0	28.2 m 28.2	—	28.2	—	33.5 m 33.5 P	S	airs	—	B <sub>1</sub> D <sub>9</sub>	9	—	—	1/2 Gb	0	0	—	—	—	—	Nb	0	D. H.D.	
	6pm	29.872 +0.02	49.8	28.2 m 27.9	—	28.2	—	29.8 m 29.8 P	S	1	—	B <sub>2</sub> D <sub>9</sub> 1/2	9 1/2	—	—	SE	1/2 Gb	0	0	—	—	—	—	Scud Nb	0	D. H.D.
	8pm	29.887 -0.08	54.0	27.9 m 28.1	—	27.8	—	28.7 m 28.7 P	SSE	1-2	—	O <sub>10</sub>	10	—	—	SE	1/2 Gb	0	0	—	—	—	—	Nb	0	Rev
	10pm	29.910 -0.11	55.8	27.1 m 27.1	—	28.2	—	27.5 m 28.3 P	S	1	—	B <sub>1</sub> 1/2 C <sub>8</sub> 1/2	8 1/2	—	—	—	Ch	0	0	—	—	—	—	Scud. St. Nb. C <sub>10</sub>	0	A. E.



## BRITISH ANTARCTIC

## EXPEDITION, 1910.

27<sup>th</sup> & 28<sup>th</sup> days of the Month of December

1911

Meteorological

Register kept at Cape Adan

Day	Hour	Barometer No. 1155	Attd. Ther. No.	THERMOMETERS				WIND		ANEMOMETER		Weather	CLOUDS		CLOUDS		Rain or Snow	Hours Sunshine	AURORA				Kind of Drift.	REMARKS	Initials of Observer	
				Dry Bulb No. 8163	Max. No.	Spirit Min. No. 3446	Solar Radn. No. 952	Terr. Radn. No. 3447	Direction True	Force	Miles Read		3 Min. Later	Amount	Kind	Upper			Lower	moving from	Direction	N				E
27/12/11	8am	29.947 +020	43.1	29.5m 29.6	—	23.8	—	29.0 P	Calm	—	—	Bq <sup>3</sup> / <sub>4</sub> C <sup>1</sup> / <sub>4</sub>	$\frac{1}{4}$	—	—	Ch	0	3	—	—	—	—	as.	—	RSP	
	10am	29.992 +015	45.0	31.0 m 30.9	—	29.4	—	31.2 P	Calm	—	—	Bq C	1	—	—	S	Ch	0	2	—	—	—	—	St	0	RSP
	12noon	30.012 +002	50.0	31.9 m 31.9	—	31.0	109.5	31.0 P	Calm	—	—	Bq C	1	—	—	S	Ch	0	2	—	—	—	—	St	0	D HD
	2pm	30.044 -017	57.2	32.1 m 31.8	—	31.8	112.0	33.1 P	W air	—	—	Bq C	1	—	—	S	Ch	0	2	—	—	—	—	St	0	RSP
	4pm	30.085 -020	58.4	31.1 m 31.1	—	31.1	—	36.0 P	Calm	—	—	Bg C <sub>2</sub>	2	—	—	—	Ch	0	2	—	—	—	—	St	0	RSP
	6pm	30.069 -000	54.3	31.0 m 29.8	—	31.1	—	42.2 P	Calm	—	—	Bq <sup>1</sup> / <sub>2</sub> C <sup>1</sup> / <sub>2</sub>	$\frac{1}{2}$	—	—	—	Ch	0	2	—	—	—	—	St	0	RSP
	8pm	30.093 -025	60.1	29.8 m 29.8	—	29.8	—	49.8 P	Calm	—	—	Bq <sup>1</sup> / <sub>2</sub> C <sup>1</sup> / <sub>2</sub>	$\frac{1}{2}$	—	—	—	Ch	0	2	—	—	—	—	St	0	RSP
	10pm	30.094 -030	62.0	28.6 m 28.6	—	28.8	—	46.0 P	S air	—	—	Bq <sup>1</sup> / <sub>2</sub> C <sup>1</sup> / <sub>2</sub>	$\frac{1}{2}$	—	—	—	Ch	0	2	—	—	—	—	St	0	D HD
28/12/11.	8am	29.855 +044	34.1	25.1 m 24.7	—	21.9	—	25.2 P	W 1	—	—	Bg C <sub>2</sub>	2	—	—	SE	Ch	0	all time	—	—	—	—	St	0	RSP
	10am	29.879 +004	49.1	25.4 m 25.9	—	23.7	—	26.2 P	WNW 1	—	—	Bq <sup>3</sup> / <sub>4</sub> C <sup>1</sup> / <sub>4</sub>	$\frac{1}{4}$	—	—	—	Ch	0	2	—	—	—	—	St	0	RSP
	12noon	29.864 +007	48.0	25.8 m 26.1	—	25.0	—	26.6 P	S air	—	—	Bq <sup>3</sup> / <sub>4</sub> C <sup>1</sup> / <sub>4</sub>	$\frac{1}{4}$	—	—	—	Ch	0	2	—	—	—	—	St	0	A. B.



## BRITISH ANTARCTIC

## EXPEDITION, 1910.

28<sup>th</sup> & 29<sup>th</sup> days of the Month of December

1911

Meteorological

Register kept at Cape Adare

Day	Hour	Barometer	Attd. Ther.	THERMOMETERS				WIND		ANEMOMETER		Weather	CLOUDS		Rain or Snow	Hours Sunshine	AURORA				REMARKS	Initials of Observer					
				Dry Bulb	Max.	Spirit Min.	Solar Radn.	Terr. Radn.	Direction True	Force	Miles Read		3 Min. Later	Amount			Kind	Upper	Lower	N			E	S	W		
		No. 1155	No.	No. 8483	No. —	No. 3464	No. 952	No. 3447																			
28/12/11	2pm	29.838	51.0	28.1 M	—	25.7	—	26.4 M	W	1	—	B <sub>9</sub> <sup>3</sup> / <sub>4</sub> C <sub>1</sub> <sup>1</sup> / <sub>4</sub>	$\frac{1}{4}$	—	ESE	Ch	0	2	—	—	—	—	Scud				
	4pm	29.826	53.0	28.0 M	—	27.5	—	29.8 M	SW	air	—	B <sub>9</sub> <sup>1</sup> / <sub>2</sub> C <sub>1</sub> <sup>1</sup> / <sub>2</sub>	$\frac{1}{2}$	—	—	Ch	0	2	—	—	—	—	St. Clu				A. J.
	6pm	29.828	52.8	27.8 M	—	27.8	—	36.0 M	S	1	—	B <sub>9</sub> <sup>1</sup> / <sub>2</sub> C <sub>1</sub> <sup>1</sup> / <sub>2</sub>	$1\frac{1}{2}$	—	SE	Ch	0	2	—	—	—	—	Scud				B.
	8pm	29.824	53.5	26.3 M	—	26.3	—	39.8 M	S	1	—	B <sub>8</sub> <sup>1</sup> / <sub>2</sub> C <sub>1</sub> <sup>1</sup> / <sub>2</sub>	$1\frac{1}{2}$	—	SE	Ch	0	2	—	—	—	—	Scud				A. J.
	10pm	29.822	55.0	25.1 M	—	25.1	—	45.5 M	S	1	—	B <sub>8</sub> <sup>1</sup> / <sub>4</sub> C <sub>1</sub> <sup>3</sup> / <sub>4</sub>	$1\frac{3}{4}$	—	SE	Ch	0	2	—	—	—	—	St. Clu				A. J.
29/12/11	8am	29.740	42.0	27.3 M	—	23.0	—	24.8 M	Smoothly air	—	—	B <sub>8</sub> C <sub>2</sub>	2	—	E	Ch	0	3 $\frac{1}{2}$	—	—	—	—	St. Clu				A. J.
	10am	29.746	47.0	26.2 M	—	27.0	—	27.0 M	S	air	—	B <sub>8</sub> C <sub>2</sub>	2	—	N	Ch	0	2	—	—	—	—	St. Clu				B.
	12noon	29.738	47.0	28.9 M	—	27.5	114.8	28.1 M	S	1	—	B <sub>7</sub> C <sub>3</sub>	3	—	ESE	Ch	0	1 $\frac{1}{35}$	—	—	—	—	Scud				A. J.
	2pm	29.736	51.4	29.0 M	—	28.2	114.9	30.2 M	SSE	1	—	B <sub>7</sub> C <sub>3</sub>	3	—	E	Ch	0	2	—	—	—	—	Scud				A. J.
	4pm	29.720	56.0	30.8 M	—	29.5	—	32.0 M	Calm	—	—	B <sub>2</sub> C <sub>8</sub>	8	—	ESE	Ch	0	1 $\frac{1}{2}$	—	—	—	—	St. Clu				A. J.
	6pm	29.712	55.2	30.0 M	—	29.8	—	36.0 M	SW	air	—	—	B <sub>4</sub> C <sub>6</sub>	6	—	ESE	Ch	0	1 $\frac{1}{2}$	—	—	—	—	Scud			



## BRITISH ANTARCTIC

29<sup>th</sup> & 30<sup>th</sup> days of the Month of December

191 /

*Meteorological*

## EXPEDITION, 1910.

Register kept at Cape Adare 1101 & 1102 gamma of a subarctic localities, 1101 & 1102

Date to Day	Hour	Barometer	Attd. Ther.	THERMOMETER				WIND		ANEMOMETER		Weather	CLOUDS		Rain or Snow	Hours Sunshine	AURORA				Remarks	Initials of Observer					
				Dry Bulb	Max.	Spirit Min.	Solar Radn.	Terr. Radn.	Direction True	Force	Miles Read		3 Min. Later	Amount			Kind	Direction moving from	Upper	Lower			N	E	S	W	
		No. 1155	No.	No. 843	No.	No. 3446	No. 952	No. 3447																			
24/12/11	8pm	29.655 -006	52.7	31.1 m 31.2 P 300 m	—	29.6	—	34.9 P 31.0 m	SE	3	—	B <sub>2</sub> C <sub>2</sub>	8	—	—	ESE	1/2 Glo	0	1/2	—	—	—	—	Scud St Cu	0	W. S. just perceptible through mist. A P.	
	10pm	29.650 +012	46.0	300	—	29.9	—	32.8 P	ESE	6.7	—	B <sub>4</sub> C <sub>6</sub>	6	—	—	ESE	1/2 Glo	0	1/2	—	—	—	—	Scud St Cu	0	Swi S. Newns glaciis obscure. A P.	
30/12/11	8am	29.566 +041	34.7	31.2 m 31.2 31.8 m	—	25.4	—	31.3 P 30.9 m	ESE	7.8	—	B <sub>4 1/2</sub> C <sub>1 1/2</sub>	1 1/2	—	—	SE	Ch	0	—	—	—	—	—	Scud St Cu	0	Clouds travelling rapidly. A P.	
	10am	29.600 +007	47.9	31.3 32.1 m	—	29.7	—	32.1 P 31.1 m	ESE	5.7	—	B <sub>4 1/2</sub> C <sub>1 1/2</sub>	1 1/2	—	—	SE	Ch	0	—	—	—	—	—	Scud St Cu	0	Sunshine record blown away. A P.	
	12 noon	29.612 +007	47.8	31.9 33.0 m	—	29.2	110.7	32.5 P 31.8 m	ESE	6.8	—	B <sub>4 1/2</sub> C <sub>1 1/2</sub>	1 1/2	—	—	SE	Ch	0	2	—	—	—	—	Scud St Cu	0	A. P.	
	2pm	29.616 -008	54.1	33.0 32.2 m	—	30.2	118.5	33.4 P 32.8 m	ESE	5.8	—	B <sub>4 1/2</sub> C <sub>1 1/2</sub>	1 1/2	—	—	SE	Ch	0	2	—	—	—	—	Scud St Cu	0	A. P.	
	4pm	29.606 -004	51.9	32.0 31.0 m	—	29.0	—	33.2 P 32.0 m	ESE	5.7	—	B <sub>4</sub> C <sub>1</sub>	1	—	—	SE	Ch	0	2	—	—	—	—	Scud St Cu	0	B. P.	
	6pm	29.592 -006	53.0	30.5 29.9 m	—	30.0	—	34.0 P 32.8 m	ESE	6.7	—	B <sub>8</sub> C <sub>2</sub>	2	—	—	SE	Ch	0	2	—	—	—	—	Scud St Cu	0	H.D.	
	8pm	29.596 -014	55.8	29.9 31.0 m	—	26.9	—	32.6 P 33.0 m	ESE	7.8	—	B <sub>9</sub> C <sub>1</sub>	1	—	—	SE	Ch	0	2	—	—	—	—	Scud St Cu	0	R.W.	
	10pm	29.632 -006	53.0	31.0	—	27.0	—	34.0 P	ESE	6.7	—	B <sub>9</sub> C <sub>1</sub>	1	—	—	SE	1/2 Glo	0	2	—	—	—	—	Scud St Cu	0	H.P.	



## EXPEDITION, 1910.

*Meteorological*

Register kept at

Cape Adare

Date to Day	Hour	Barometer No. 1155	Attd. Ther. No.	THERMOMETERS				WIND Direction True	Force	ANEMOMETER		Weather	CLOUDS		CLOUDS		Rain or Snow	Hours Sunshine	AURORA				REMARKS	Initials of Observer
				Dry Bulb No. 8483	Max. No. —	Spirit Min. No. 3466	Solar Radn. No. 952			Terr. Radn. No. 3467	Miles Read		3 Min. Later	Amount	Kind	Direction moving from			Upper	Lower	N	E		
31/12/11	10am	29.492 +0.07	48.0	35.5 M 35.5	—	12.5	—	34.0 P	ESE	8	—	B6C4	4	—	SE Obs	0	2	—	—	—	—	Send St	Obscured Send of Cape Adare at times	J.P.
	12noon	29.462 +0.12	46.9	35.1 M 35.3	—	29.8	120.2	34.0 P	ESE	6.9	—	B7C3	3	—	Ch	0	2	—	—	—	—	Send St C.C.		RWP
	2pm	29.479 -0.04	51.9	34.9 M 35.0	—	31.4	+	35.5 P	ESE	5.7	—	B7C3	3	—	Obs	0	2	—	—	—	—	Send St C.C.	Radiant of C. C. S. NW.	RWP
	4pm	29.479 -0.06	53.0	34.9 M 35.2	—	32.9	—	35.8 P	ESE	4.7	—	B6C4	4	—	Obs	0	1 1/2	—	—	—	—	Send St C.C.	Sir P. N. glacier obscured by mist	RWP
	6pm	29.476 +0.02	50.0	35.0 M 33.8	—	32.0	—	39.0 P	ESE	4.6	—	B6C4	4	—	1/2 Obs	0	2	—	—	—	—	Send St C.C.		J.P.
	8pm	29.448 -0.06	52.9	32.9 M 33.0	—	32.4	—	36.9 P	ESE	5.7	—	B8C2	2	—	1/2 Obs	0	2	—	—	—	—	Send St C.C.		RWP
	10pm	29.451 +0.04	49.0	33.0 M 33.5	—	32.0	—	38.2 P	ESE	3.6	—	B6C4	4	—	Obs	0	2	—	—	—	—	Send St C.C.		RWP
	12midnt	29.449 +0.12	46.4	32.6 M	—	32.8	—	38.4 P	SE	1.4	—	B5C5	5	—	Obs	0	?	—	—	—	—	Send		RWP



## BRITISH ANTARCTIC

## EXPEDITION, 1910.

1st &amp; 2nd day Month of January

1912

Meteorological

Register kept at

Cape Adare

Journal of the Month of January 1912

Day	Hour	Barometer No.	Attd. Ther. No.	THERMOMETERS				Direction True	Force	ANEMOMETER		Weather	CLOUDS		CLOUDS		Rain or Snow	Hours Sunshine	AURORA				Kind of Cloud	Drift	REMARKS	Initials of Observer
				Dry Bulb No.	Max. No.	Spirit Min. No.	Solar Radn. No.			Terr. Radn. No.	Miles Read		3 Min. Later	Amount	Kind	Direction moving from			Upper	Lower	N	E				
		1155		5163		3444	952	3447																		
1/12/12	8am	29.462	47.9	35.2 M 35.5	—	29.7	—	34.1 P	SSE	1-2	—	B <sub>9</sub> C <sub>4</sub>	1	—	SE	1/2 Gls	0	most time	—	—	—	—	Ca Scud	0	Sir G. Neumoglaia observed	RWP
	10am	29.499	51.9	34.7 M 34.7	—	31.6	—	34.1 P	S	1-2	—	B <sub>9</sub> C <sub>4</sub>	1	—	SE	1/2 Gls	0	2	—	—	—	—	Ca Scud	0		RWP
	12noon	29.500	57.3	33.1 M 33.1	—	32.1	112.9	33.8 P	S	3-5	—	B <sub>7</sub> C <sub>3</sub>	3	—	S	1/2 Gls	0	1 3/4	—	—	—	—	Ca St Scud	0		RWP
	2pm	29.527	58.9	33.6 M 34.1	—	32.2	113.0	34.3 P	SSE	3-4	—	B <sub>8</sub> C <sub>2</sub>	2	—	S	1/2 Gls	0	2	—	—	—	—	St Scud	0		RWP
	4pm	29.518	46.6	31.8 M 32.0	—	31.7	—	32.8 P	SSE	3-5	—	B <sub>8</sub> C <sub>2</sub>	2	—	S	1/2 Gls	0	2	—	—	—	—	Scud	0		RWP
	6pm	29.524	53.0	31.9 M 31.9	—	31.5	—	34.0 P	SSE	3-4	—	B <sub>5</sub> C <sub>5</sub>	5	—	S	1/2 Gls	0	2	—	—	—	—	Scud	0		D R.D.
	8pm	29.548	54.1	29.6 M 29.8	—	29.6	—	30.4 P	SSE	3-4	—	B <sub>2</sub> C <sub>8</sub>	8	—	NW	1/2 Gls	0	0	—	—	—	—	Scud. Ca Scud. Ca	0		RWP
	10pm	29.586	55.4	29.2 M 29.2	—	29.2	—	29.9 P	SSE	1-2	—	B <sub>4</sub> C <sub>6</sub>	6	—	—	1/2 Gls	0	0	—	—	—	—	St. Scud	0		RWP
2/1/12	8am	29.586	41.7	29.8 M 29.8	—	28.4	—	30.2 P	W	air	—	B <sub>7</sub> C <sub>3</sub>	3	—	—	Ch	0	0	—	—	—	—	St. Ca Scud	0		RWP
	10am	29.630	48.0	29.1 M 29.1	—	29.1	—	29.1 P	Calm	—	—	B <sub>6</sub> C <sub>4</sub>	4	—	SE	Ch	0	0	—	—	—	—	St. Ca Scud. Ca	0		RWP
	12noon	29.642	50.0	32.0 M 32.0	—	29.1	109.2	32.2 P	Calm	—	—	B <sub>5</sub> C <sub>5</sub>	5	—	SE	Ch	0	0	—	—	—	—	St. Ca Scud	0	Clouds moving locally but slowly from SE	D R.D.







BRITISH ANTARCTIC EXPEDITION, 1910.

Month of \_\_\_\_\_

191

*Meteorological*

Register kept at

[illegible]



## BRITISH ANTARCTIC

## EXPEDITION, 1819

Month of

191

Meteorological

Register kept at

191

Month of

## THERMOMETERS

## WIND

## ANEMOMETER

## CLOUDS

## CLOUDS

## AURORA

## THERMOMETERS

## REMARKS

Initials  
of  
ObserverInitials  
to  
Observer

Day

Hour

Barometer

Attd.  
Ther.Dry  
Bulb

Max.

Spirit  
Min.Solar  
Radn.Terr.  
Radn.Direction  
True

Force

Miles  
Read3 Min.  
Later

Weather

Amount

Kind

Upper

Lower

Erebus  
SmokeRain  
or  
SnowHours  
Sunshine

N

E

S

W

No.

No.

No.

No.

No.

No.

No.

No.

No.

No.



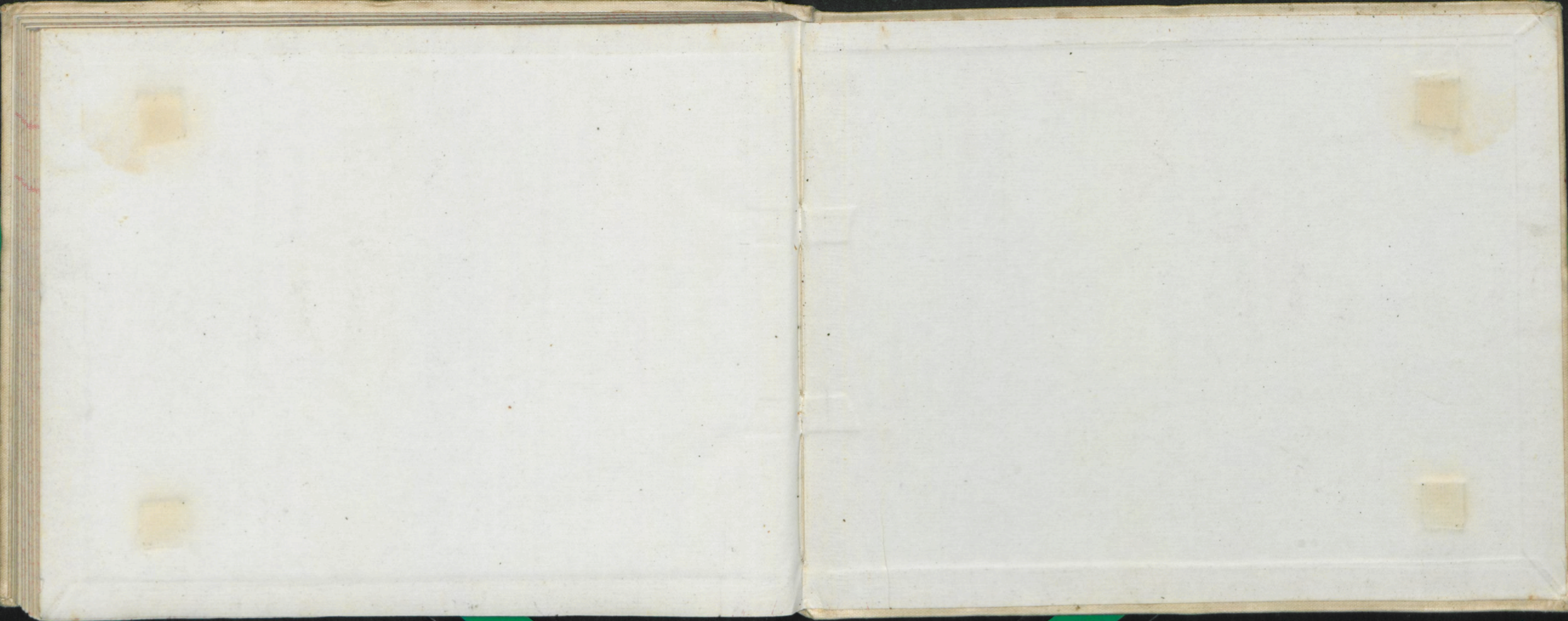
BRITISH ANTARCTIC

South of

181

Antarctica







BOOK 3

BAE  
1910-11

at

Eastern Party

Cape Adare

METEOROLOGICAL LOG

from

NOVEMBER 16<sup>th</sup> 1911

OTHER  
END  
COMMENCES