



Met Office

# Met Office 3-month Outlook

Period: May – July 2018 Issue date: 26.04.18

The forecast presented here is for May and the average of the May-June-July period for the United Kingdom as a whole. The forecast for May will be superseded by the long-range information on the public weather forecast web page ([www.metoffice.gov.uk/public/weather/forecast/#?tab=regionalForecast](http://www.metoffice.gov.uk/public/weather/forecast/#?tab=regionalForecast)), starting from 4 May 2018.

This forecast is based on information from observations, several numerical prediction systems and expert judgement.

## SUMMARY – TEMPERATURE:

For May, the chances of above- and below-average temperatures are close to normal. For May-June-July as a whole, above-average temperatures are more probable than below-average temperatures.

Overall, the probability that the UK-average temperature for May-June-July will fall into the coldest of our five categories is between 5% and 10% and the probability that it will fall into the warmest of our five categories is 30% (the 1981-2010 probability for each of these categories is 20%).

## CONTEXT:

La Niña is now ending. The El Niño-Southern Oscillation (ENSO), of which La Niña is the cold phase, is transitioning to a neutral phase and therefore will have very little influence on conditions over the UK in the coming months.

Sea surface temperatures around the UK are below average following the cold weather in late winter and early spring. In May, this is likely to moderate the trend towards higher UK temperatures seen in recent years. As we move into the summer, however, sea surface temperatures are expected to recover, so are unlikely to have a significant effect on the 3-month period overall.

For May, the Met Office long-range prediction system suggests that on average the UK will be located between different weather patterns lying to the east and west. This implies that the UK is likely to

experience a mix of weather conditions through the month, as the influence of each fluctuates. The chances of May temperatures being above- or below-average overall, therefore, are similar to normal (see left-hand graph of figure T2).

For May-June-July, the Met Office long-range prediction system, along with systems from other prediction centres, shows no strong signals for any particular type of weather pattern. Nevertheless, there is an increased probability of higher-than-average temperatures (see right-hand graph of figure T2). This is consistent with conditions in recent years, which have tended to be warmer than the 1981-2010 reference period. It is worth noting, however, that there is a smaller, but still realistic, chance of cooler-than-average weather on average through the 3-month period.

Fig T1

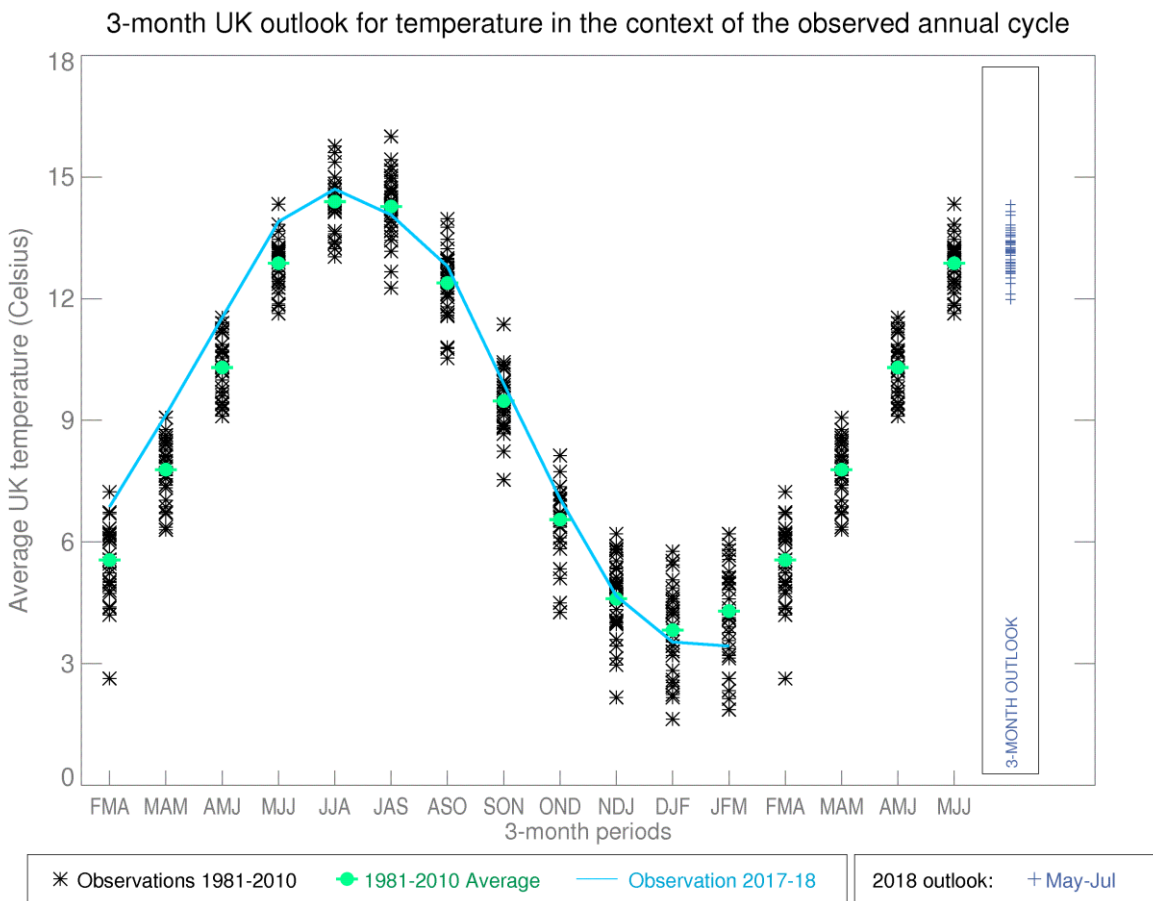


Fig T2

1-month and 3-month UK outlook for temperature in the context of observed climatology

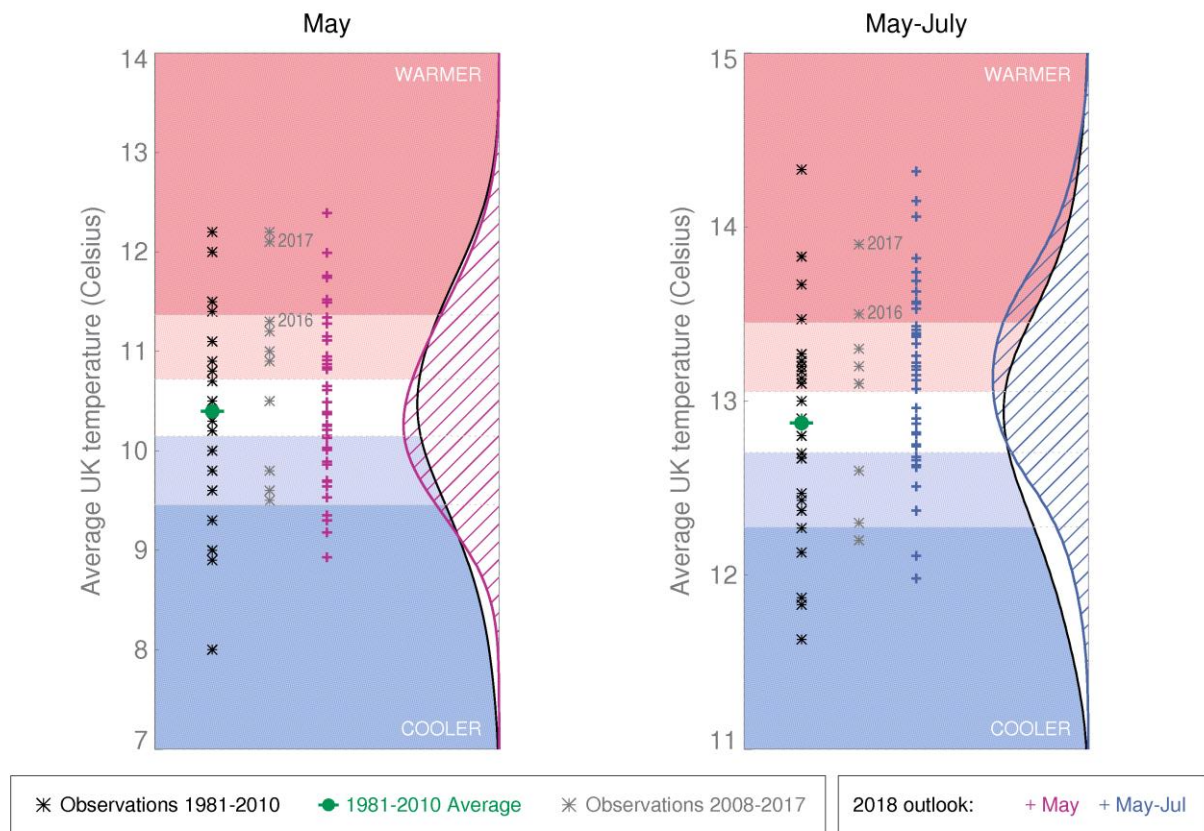
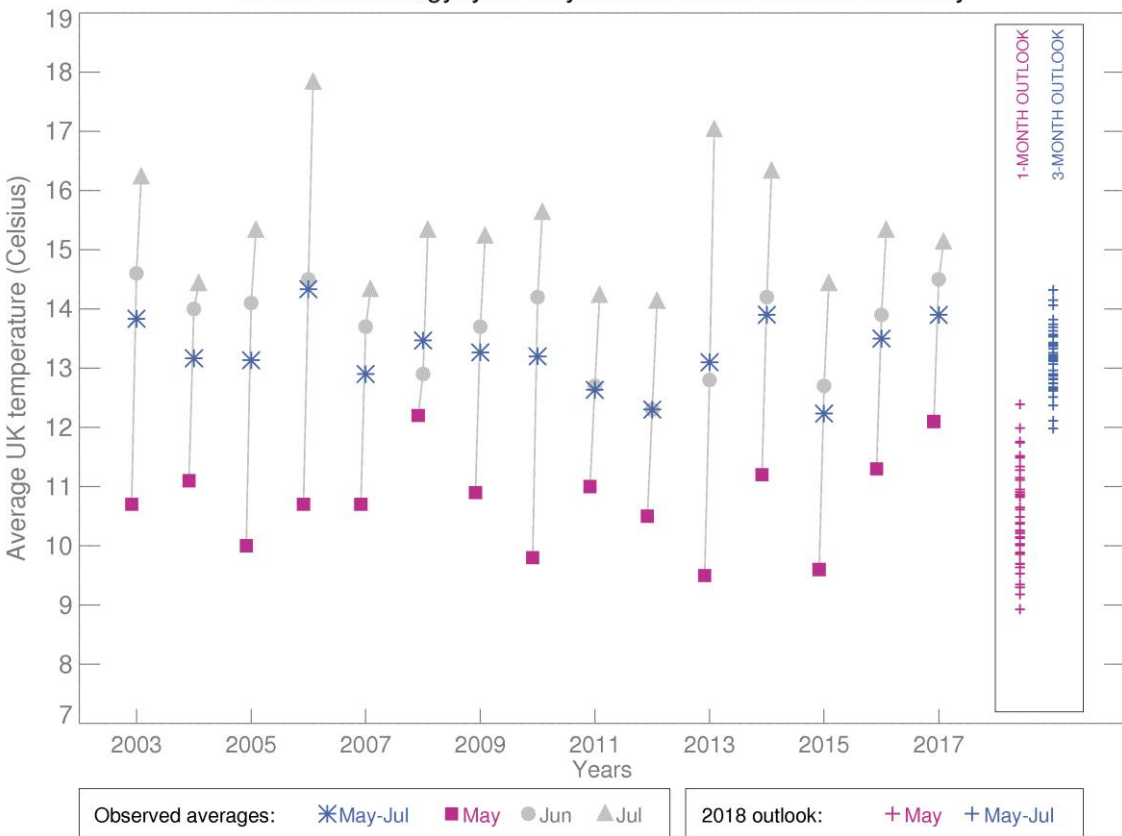


Fig T3

1-month and 3-month UK outlook for temperature in the context of recent climatology: year-to-year and within-season variability



This Outlook provides an indication of possible temperature and rainfall conditions over the next 3 months. It is part of a suite of forecasts designed for contingency planners. The Outlook should not be used in isolation but should be used with shorter-range and more detailed (30-day, 15-day and 1-to-5-day) forecasts and warnings available to the contingency planning community from the Met Office.