

II

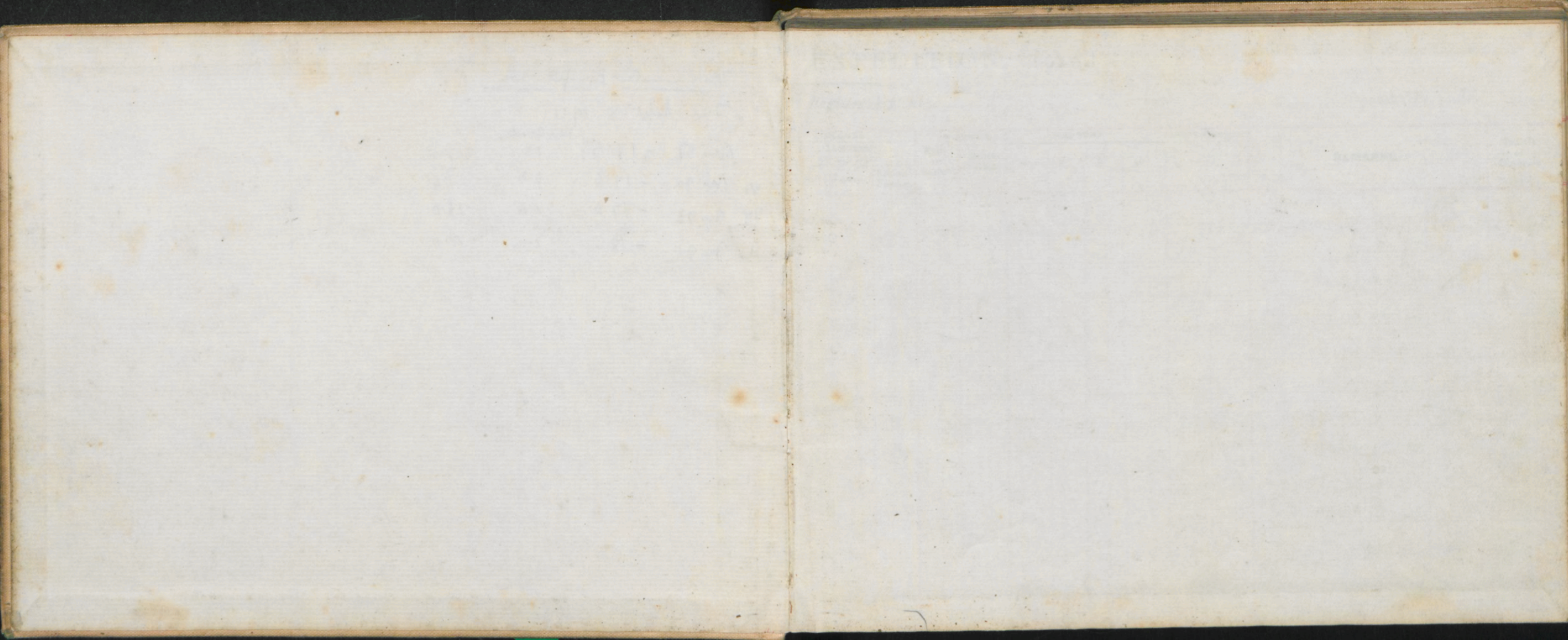
B.A.E.

10

Thermometer comparison

Fri Sept 8 1911

			Kew Correction	
	No 51	-17.5	0.0	-17.5
VI	No 90	-17.6	0.0	-17.6
VII	No 93	-17.0	-1.0	-18.0
II	No 91	-18.0	0.0	-18.0



EXPEDITION, 1910.

Month of _____

191

Meteorological

Register kept at

[illegible]

BRITISH ANTARCTIC

EXPEDITION, 1910.

Month of

191

Meteorological

Register kept at

191

Month of

Day	Hour	Barometer No.	Attd. Ther. No.	THERMOMETERS				WIND		ANEMOMETER		Weather	CLOUDS		CLOUDS Direction moving from		Rain or Snow	Hours Sunshine	AURORA				REMARKS	Initials of Observer				
				Dry Bulb No.	Max. No.	Spirit Min. No.	Solar Radn. No.	Terr. Radn. No.	Direction True	Force	Miles Read		3 Min. Later	Amount	Kind	Upper			Lower	Erebus Smoke	N	E			S	W		
	8.4	29.770	31.0	-5.7	0.0	-24.2(?)			ESE	938	414	623	↓	16	AC				8.48					-6.0	Swirl clouds over Erebus			
		29.548	42.0											10	CS				-5.0					-6.3 -6.5	Little snow drift			
		29.600	46.2											9	AS				-5.0							Weather clearing		
		29.618	45.7											7	CS				11.3									
7 IX 1911	04	29.676	38.1										C.B. 5	8	CS				11.5							Clouding over		
8 " "	4	29.618	34.0										O.C.	10	CS				24.5							Slight drift.		
	8.4	29.616	37.2	-20.2	+0.8	-23.9			SSE	017	533	642		1	S				-12.5							2.30 Snow cleared.		
	12	29.572	45.0											1	S				4.5							lunatic. Stars visible through		
	11	29.542	46.5										*	8	AS				-8.1							Cloud cap on Erebus li. & li. St.		
	20.30	29.452	49.8											3	AS				8.48									
	24.0	29.346	45.0											10	AS				-16.8									
	11	29.240	40.0											8	AS				12.8							little snow dust falling.		
																			-11.0							much snow		
																			16.7									
																			-19.5									
																			20.40									
																			-23.5									
																			24.3									
																			-22.2									
																			4.2									
																			-24.5									
																											Completely overcast & moon dim	GT.
																											Clouded except zenith	GT.

BRITISH ANTARCTIC

Month of

191

Meteorological

EXPEDITION, 1910.

Register kept at

[illegible]

BRITISH ANTARCTIC

EXPEDITION, 1910.

Month of

191

Meteorological

Register kept at

Day	Hour	Barometer No.	Attd. Ther. No.	THERMOMETERS				WIND		ANEMOMETER		Weather	CLOUDS		CLOUDS Direction moving from			Rain or Snow	Hours Sunshine	AURORA				REMARKS	Initials of Observer	
				Dry Bulb No.	Max. No.	Spirit Min. No.	Solar Radn. No.	Terr. Radn. No.	Direction True	Force	Miles Read		3 Min. Later	Amount	Kind	Upper	Lower			Erebus Smoke	N	E	S			W
	21	29.196	36.0	8.24 -31.4	-19.9	-37.0			WNW.	049.810	822	W	10	CS			W		8.45 -35.0					-31.2 -31.8 -31.6		
	12.0	29.184	42.7										10	CS					12.8 33.3							
	16.2	29.146	44.9										10	CS					16.4 30.0							
		29.116	47.6										10	CS					19.58 -25.5						Heavily overcast (Erebus visible except to SW. Erebus not. 7/10 sky heavily overcast, rest has CS.)	
n	24.0	29.048	41.8										8						24.2 -29.8							
	4.0	29.022	37.8	8.31									7	CS					4.3 -30.1							
	8.1	28.974	36.0	-23.3	-23.3	-32.7			Cal	055.764	772	W	10	CS					8.43 -28.6					-23.3 -23.7	Drift obscured.	G.T.
	12.0	29.000	43.9										10	AG CS					12.3 -26.8						Sun faintly apparent.	
	4.7	28.961	45.3									W	10				NW		4.9 -8.2						Drifting slightly. Obscured everywhere except W. horizon.	
	20	28.972	48.2										10	CS			NW		20.8 -23.5						Very thin layer of CS over whole sky. Heavy clouds in parts.	
	24	28.968	43.2										3						24.2 -26.2						Erebus practically obscured - otherwise clear.	
Sept 13.	4	28.948	37.7										4						4.3 -28.2						Sky clear except to S. & W.	

BRITISH ANTARCTIC

EXPEDITION, 1910.

Month of

191

Meteorological

Register kept at

191

to Month

Day	Hour	Barometer No.	Attd. Ther. No.	THERMOMETERS					WIND		ANEMOMETER		Weather	CLOUDS		CLOUDS Direction moving from			Rain or Snow	Hours Sunshine	AURORA				REMARKS	Initials of Observer			
				Dry Bulb No.	Max. No.	Spirit Min. No.	Solar Radn. No.	Terr. Radn. No.	Direction True	Force	Miles Read	3 Min. Later		Upper	Lower	Erebus Smoke	N	E			S	W							
FRI II Sept 15	8.1	29.000	37.8	8.28 -36.5	22.2	39.5			SE	083	602	622	W	8	GS			little			8.35 -39.2					-36.5 -37.5	C.S. chiefly to North	GT.	
	12.2	29.080	42.9											4	S			none			12.5 -33.2					-37	status to S.W. (Hazy North)		
	16.1	29.148	47.0											10	S						4.2 -31.2						Overcast, sun invisible slightly clear to S.		
	20.3	29.210	49.2											9	S						8.8 -26.8						Slight haze overall, clearer to west		
	24	29.260	43.2											0							24.1 -27.8								
SAT Sept 16	4	29.246	38.8											9	SY						4.2 -23.6								
	8.0	29.260	37.7	8.21 -19.5	-15.7	-38.2			SE	069	011	034	WN	6?	S GS			NW loop frames (v low)			8.31 -23.7					-19.3 -19.3	Heavy status to east C.S. elsewhere, esp. NW.	Slight haze overhead	GT.
	12.8	29.230	43.8											2?	S						12.10 -19.6						Sky slightly hazy, but sun strong		
	16.30	29.224	46.5											10	S						4.30 -17.2						also status except low in NW		
	20.0	29.186	42.2											5	S			little			8.3 -2.1						Clear zenith, status around horizon		
	24.4	29.150	42																		+4						do low slight drift		
	4.5	29.140	36.8																		+2								

BRITISH ANTARCTIC

EXPEDITION, 1910.

Month of

191

Meteorological

Register kept at

101

101

Day	Hour	Barometer No.	Attd. Ther. No.	THERMOMETERS					WIND		ANEMOMETER		Weather	CLOUDS		CLOUDS Direction moving from			Rain or Snow	Hours Sunshine	AURORA				REMARKS	Initials of Observer		
				Dry Bulb No.	Max. No.	Spirit Min. No.	Solar Radn. No.	Terr. Radn. No.	Direction True	Force	Miles Read	3 Min. Later		Amount	Kind	Upper	Lower	Erebus Smoke			N	E	S	W				
Sunday Sept 17	8.3	29.120	37.2	8.29 -2.8	+7.2	-25.5			S	13.6	96.6	04.2		2	S			disc.		8.34 -4.3					-2.2 -10-3.1	Whalebacks near icebergs Clear except horizon	G.T.	
	12.1	29.004	44.6											1	S					12.4 -3.3						Heavy stratus near icebergs. Sun bright and clear than on stones.		
	17.0	29.084	45.2											0				Large SW		17.2 -14.1						Clear powerful sun.		
	20.30	29.042	45.5											0				abs.		20.35 -9						Clear		
	24.0	29.026	42.5											0	-			-		24.5 -13.8						Aurora certain in zenith (Clear sky) from S to NE.	Blod	
Sept 18	4.0	28.996	40											2	CS.			-		4.8 -20						Light CS in South.	Blod	
	8.0	28.940	40	8.31 -15.3	+4.8	-18.2			N	16.0	82.7	8.57		7?	S			v. low		8.55 -20					-16.0 -15.7 -16.7	Light CS over mountains not much more than haze	GT	
	12.1	28.950	48.2																	12.4 -20.2								
	16.0	28.934	46.4											10	CS.			v. low		16.2 -18.3							Heavy stratus to NE, clouds above	
	20.45	29.016	50.2											4	CS.					20.47 -19.5							Clear zenith to South, Hazy elsewhere	
	24.	29.052	46.5											1	ST.					24.4 -21.2						Faint Aurora. NNE to SSW over zenith	Clear sky. A few low st. over W. Mts	
Sept. 19. 11.	4	29.122	41.0										0	10	CS.					4.3 -20.0							Completely overcast.	

BRITISH ANTARCTIC

EXPEDITION, 1910.

Month of

191

Meteorological

Register kept at

Day	Hour	Barometer No.	Attd. Ther. No.	THERMOMETERS					WIND		ANEMOMETER		Weather	CLOUDS		CLOUDS Direction moving from			Rain or Snow	Hours Sunshine	AURORA				REMARKS	Initials of Observer		
				Dry Bulb No.	Max. No.	Spirit Min. No.	Solar Radn. No.	Terr. Radn. No.	Direction True	Force	Miles Read	3 Min. Later		Amount	Kind	Upper	Lower	Erebus Smoke			N	E	S	W				
Sept 19	7.59	29.214	38.9	8.22 -22.6	-7.6	-23.8			N	177	398	410		8	GS			ENE Strong		8.30 23.5					-22.2 -21.8 -21.8	Erebus except by long banner reaching to station cliffs	GT	
	12.8	29.310	46.5	-										10	GS			obsc ENE		12.10 -20.0						Fracto-stratus over all.		
	15.57	29.360	46.8											7	GS			Strong		16.0 -20.0						Fracto stratus over most of apt NW. (no banner on Erebus)		
	20.15	29.364	49											7	CS.			Strong		20.15 -23						Cirrus-stratus over Erebus S.H.A.		
	24	29.332	44											3	st.					23.58 -16.2						2.0 sky thinly overcast		
Sept 20	4	29.291	39.5						N					8	st.		N			3.55 -9.2								EL
	8.3	29.280	38.0	8.21 -7.2	-7.0	-25.0			SE	189	810	827		10	S	52		obsc		8.30 -8.9					-7.4 -7.2 -7.5	Overcast but W foothills visible.	GT	
	11.57	29.336	47.0											5?	S FS C	2				12.0 -7.4						Zenith & South clear (or very slight haze) east with dark isolated fracto-stratus; W stratus		
	16.4	29.358	47.9										→ 8					obsc		4.7 +6.5						Indeo to South, bright sun, drifting little		
	20.57	29.430	49.9											5	S			obsc		10.1 +3.8						zenith & NW clear. no drift		
	24.0	29.426	44.8											9	S			obs		24.2 -4						Clear except NW S. Horrocks	GT	
	4.0	29.460	40.2											10						4.2 -2.5						Completely overcast. no drift.		

BRITISH ANTARCTIC

EXPEDITION, 1910.

Month of

191

Meteorological

Register kept at

191

Month of

Day	Hour	Barometer No.	Attd. Ther. No.	THERMOMETERS				WIND		ANEMOMETER		Weather	CLOUDS		CLOUDS			Rain or Snow	Hours Sunshine	AURORA				REMARKS	Initials of Observer																																																																																																																																																																																																																																																																																																																																																																																																																																																																																																																																																																																																																																																																																																																																																																																																																																																																																																																																																																																																																																																																																																																																																																																																																																																																																																											
				Dry Bulb No.	Max. No.	Spirit Min. No.	Solar Radn. No.	Terr. Radn. No.	Direction True	Force	Miles Read		3 Min. Later	Amount	Kind	Direction moving from	Erebus Smoke			Upper	Lower	N	E			S	W																																																																																																																																																																																																																																																																																																																																																																																																																																																																																																																																																																																																																																																																																																																																																																																																																																																																																																																																																																																																																																																																																																																																																																																																																																																																																																									
Sept 21	7.55	29.450	37.8	8.13	-1	+12	-14							8	S			OBSC		8.20																																																																																																																																																																																																																																																																																																																																																																																																																																																																																																																																																																																																																																																																																																																																																																																																																																																																																																																																																																																																																																																																																																																																																																																																																																																																																																																</

Beautiful cumulus
at 13. due to overcast.

BRITISH ANTARCTIC

EXPEDITION, 1910.

Month of

191

Meteorological

Register kept at

191

to Antall

Day	Hour	Barometer No.	Attd. Ther. No.	THERMOMETERS				Direction True	Force	ANEMOMETER		Weather	CLOUDS		CLOUDS Direction moving from		Rain or Snow	Hours Sunshine	AURORA				REMARKS	Initials of Observer
				Dry Bulb No.	Max. No.	Spirit Min. No.	Solar Radn. No.			Terr. Radn. No.	Miles Read		3 Min. Later	Amount	Kind	Upper			Lower	Erebus Smoke	N	E		
Sat Sep 23	8.0	29.575	40.2	8.17														low	8.25					
	1.30	29.380	47.5					SE	368	170	230		0					NW	-10.0					
	4.5	29.340	48.0										1					none	1.32					
	8.17	29.250	46.9										1					v. low	+3					
	24.15	29.196	43.5										1					none	4.5					
													1					none	-5					
													1					none	4.18					
													0					-	-6					
													0					-	24.20					
													0					-	-16.2					
Sept. 24. 11.	5.4	29.126	40.0										0					v. low	5.5					
	8.9	29.040	38.6	8.39									0					v. low	-20.5					
	12.1	28.960	42.0					ESE	398	858	878		0					v. low	8.45					
	16.1	28.900	45.2										1					v. low	-20.0					
	20.2	29.800	47.1										10					obs	12.4					
	24.3	28.790	44.5										10					obs	-14.0					
													10					obs	16.3					
													10					obs	-10.7					
													10					obs	8.35					
													8	sh				obs	-1.20					
													8	sh				obs	24.4					
													10	sh				obs	-9.5					
													10	sh				obs	4.2					
													10	sh				obs	-9.7					
Sept 25. 11.	4.5	28.780	40.0										10	sh				obs						

BRITISH ANTARCTIC

EXPEDITION, 1910.

Month of

191

Meteorological

Register kept at

191

10 11 12 13 14 15 16 17 18 19 20 21 22 23 24 25 26 27 28 29 30 31

Month to Day	Hour	Barometer No.	Attd. Ther. No.	THERMOMETERS				WIND Direction True	Force	ANEMOMETER		Weather	CLOUDS		Rain or Snow	Hours Sunshine	AURORA				REMARKS	Initials of Observer	
				Dry Bulb No.	Max. No.	Spirit Min. No.	Solar Radn. No.			Terr. Radn. No.	Miles Read		3 Min. Later	Amount			Kind	Upper	Lower	Erebus Smoke			N
Mon Sep 25	8.2	28.762	38.8	8.46 -7.2	+2.6	-21		NW	410	886	904	* light snow	10			9.0 -4.5					(Int W. mts visible) -7.2 -7.5 Overcast slight snow	GT	
	12.1	28.800	45.0										10			12.2 -4.9					all overcast, Int. W. foothills clear		
	16.0	28.800	44.0									clearing	9	S GS FS		obs					Curves overhead, clear to SW. Fracto-S over horiz. station N		
	20.0	28.780	45.5										10			-6.0 20.2 -4.5					(Faint Perseid at 16 ^h EN.)	Overcast - Int. Fennas visible	GT
	24.0	28.770	44.0									+	10			+9.8					Thick drift	LEGO	
Sep 26	4.0	28.772	39.5	8.22 +8.8	+9.8	-9.5		ESE	456	879	830	clearing	6			+9.2 8.30					no drift - (2 p.m. NE) LEGO		
	8.4	28.772	38.7										4	S FS		obs					+8.1 12.25	Low stratus + isolated fracto. S	GT
	12.23	28.780	46.5									+	10			+4.2 16.29					a little drift		
	16.27	28.760	45.3										10			+4.9 19.59					no drift		
	19.57	28.812	45.5									+	10			+2					overcast, some drift		
	24	28.830	39.4									+	10			+1					overcast - heavy drift		
	4	28.887	35.5									+	10			-3					do		

BRITISH ANTARCTIC

EXPEDITION, 1910.

Month of

191

Meteorological

Register kept at

191

Month of

Day	Hour	Barometer No.	Attd. Ther. No.	THERMOMETERS				WIND		ANEMOMETER		Weather	CLOUDS		Rain or Snow	Hours Sunshine	AURORA				REMARKS	Initials of Observer																																																																																																																																																																																																																																																																																																																																																																																																																																																																																																																																																																																																																																																																																																																																																																																																																																																																																																																																																																																																																																																																																																																																																																																																																																																																																																						
				Dry Bulb No.	Max. No.	Spirit Min. No.	Solar Radn. No.	Terr. Radn. No.	Direction True	Force	Miles Read		3 Min. Later	Amount			Kind	Upper	Lower	Erebus Smoke			N	E	S	W																																																																																																																																																																																																																																																																																																																																																																																																																																																																																																																																																																																																																																																																																																																																																																																																																																																																																																																																																																																																																																																																																																																																																																																																																																																																																																		
Sept 27	8.1	28.875	34.5	8.18	-6.0	+9.0	-32.5		SE	571	546	723	Bliz	10			8.25																																																																																																																																																																																																																																																																																																																																																																																																																																																																																																																																																																																																																																																																																																																																																																																																																																																																																																																																																																																																																																																																																																																																																																																																																																																																																																											

BRITISH ANTARCTIC

EXPEDITION, 1910.

Month of

191

Meteorological

Register kept at

Day	Hour	Barometer	Attd. Ther.	THERMOMETERS				WIND		ANEMOMETER		Weather	CLOUDS		CLOUDS		Rain or Snow	Hours Sunshine	AURORA				REMARKS	Initials of Observer		
				Dry Bulb	Max.	Spirit Min.	Solar Radn.	Terr. Radn.	Direction True	Force	Miles Read		3 Min. Later	Amount	Kind	Upper			Lower	Erebus Smoke	N	E			S	W
		No.	No.	No.	No.	No.	No.	No.																		
29 Sept	7.59	28.850	37.8	8.20 -7.5	-6.5	-17.5			SSE	74.7	30.3	430	0		low SE		8.25 -8						-7.3 -7.0 -2.5	Clear Sky	J.P. 88	
	12	28.838	41.0										0		Caln		12.7 -11.8									
	16	28.800	41.7										0		WSW		16.10 -15.0									
	20	28.810	46.0										0		Caln		20.15 -20.0									
	24	28.772	41.5										4	SL			24.0 -20.0							Shales / cloudy fine		
30 Sept	4	28.658	34.5	8.21 -6.7	-5.0	-21.6			NW	75.7	43.1	447	10	S			4.20 -13.5 8.42 -6.5						-6.4 -6.7 -6.9	Thin Shales	J.P. 85	
	8-1	28.616	36.2										10	S			12.40 +9.0							Strat. cloud to high in place		
	12-37	28.540	45.2										10	S			16.14 +10.0							showing clear sky with C.S.		
		28.488	48.0										10	CS			20.15 +12.2							Little more to drift		
		28.376	51.4										10	CS			24.12 -1.2							Very thick overcast		
	24-10	28.256	47.9										10	CS			4.4 +7.3							Erebus smoke barely visible	Thinly overcast.	
Oct. 1. 11.	4.0	28.188	42.9										10	CS											Thinly overcast.	

BRITISH ANTARCTIC

EXPEDITION, 1910.

Month of

191

Meteorological

Register kept at

Day	Hour	Barometer No.	Attd. Ther. No.	THERMOMETERS				WIND		ANEMOMETER		Weather	CLOUDS		CLOUDS Direction moving from			Rain or Snow	Hours Sunshine	AURORA				REMARKS	Initials of Observer		
				Dry Bulb No.	Max. No.	Spirit Min. No.	Solar Radn. No.	Terr. Radn. No.	Direction True	Force	Miles Read		3 Min. Later	Amount	Kind	Upper	Lower			Erebus Smoke	N	E	S			W	
Sun Oct 1.	8-1	28.176	43.8	8.24 -4.6	+13.4	-16.8				SE	805	079	109	1	S			S.		8-41 -5-8 12-5					-4.5 -4.2 -4.8	Heavy bank of stratus in south.	
	12	28.198	45.1											1	LS Alm			K.		+7 16.5						Heavy layers of clouds has spread over sky leaving little clear sky in north.	
	16	28.264	44.2											9	S					+2.3 20.2							
	20	28.384	50.1											10						+3.0 23.59							
	24	28.476	48.0											10						+5.0 4.7						crystals falling	Elh
Mon Oct 2		28.646	42.0											10						+5.5 9.00						birrard	Elh
	8-2	28.736	40.3	8.25 +4.0	+13.3	-9.0				SE	855	555	790.	*	↓	10				+4.0 12.12						Heavy drift	
	12	28.906	46.0											*	↓	10				+1.0 16.5						Heavy drift	
	16	28.958	48.6											*	↓	10				+1.0 20.13						"	
	20	28.984	48.7											*	↓	10				+1.7 24.04						thick drift, but less than before	
	24	28.900	43.7											*	↓	10				+5.0 4.15						"	
		28.846	40.0											*	↓	10				+4.8						Moderate drift	

BRITISH ANTARCTIC

EXPEDITION, 1910.

Month of

191

Meteorological

Register kept at

Day	Hour	Barometer	Attd. Ther.	THERMOMETERS				WIND		ANEMOMETER		Weather	CLOUDS		CLOUDS			Rain or Snow	Hours Sunshine	AURORA				REMARKS	Initials of Observer																																																																																																																																																																																																																																																																																																																																																																																																																																																																																																																																																																																																																																																																																																																																																																																																																																																																																																																																																																																																																																																																																																																																																																																																																																																																																																																																		
				Dry Bulb	Max.	Spirit Min.	Solar Radn.	Terr. Radn.	Direction True	Force	Miles Read		3 Min. Later	Amount	Kind	Direction moving from	Upper			Lower	Erebus Smoke	N	E			S	W																																																																																																																																																																																																																																																																																																																																																																																																																																																																																																																																																																																																																																																																																																																																																																																																																																																																																																																																																																																																																																																																																																																																																																																																																																																																																																																																
		No.	No.	No.	No.	No.	No.	No.																																																																																																																																																																																																																																																																																																																																																																																																																																																																																																																																																																																																																																																																																																																																																																																																																																																																																																																																																																																																																																																																																																																																																																																																																																																																																																																																																			
Oct 3 rd	8-1	28.792	38.0	8.20						ESE	9.54	342	573	* +	16																																																																																																																																																																																																																																																																																																																																																																																																																																																																																																																																																																																																																																																																																																																																																																																																																																																																																																																																																																																																																																																																																																																																																																																																																																																																																																																																												

BRITISH ANTARCTIC

Month of _____

191

Meteorological

EXPEDITION, 1910.

Register kept at

Day	Hour	Barometer No.	Attd. Ther. No.	THERMOMETERS				WIND		ANEMOMETER		Weather	CLOUDS		CLOUDS Direction moving from		Rain or Snow	Hours Sunshine	AURORA				REMARKS	Initials of Observer			
				Dry Bulb No.	Max. No.	Spirit Min. No.	Solar Radn. No.	Terr. Radn. No.	Direction True	Force	Miles Read		3 Min. Later	Amount	Kind	Upper			Lower	Erebus Smoke	N	E			S	W	
Sat 7 th	7.38	28.462	43.8	8.17 -14.4	-37	-16.7			SE	108	332	358		8	S AS Ac	Ac No. 1 mult.	W.		8.41 -13.0					-14.3 -14.1 -14.9	Few ice crystals falling. Ice mounts of 22° high about lunch fresh snow lying on ground.		
	12	28.494	49.1											2	S		SE	W.		12.5 -12.8					ly in clear overhead smoke for some time for little clouds moving from a westerly direction. There is heavy cloud at NW horizon.		
	16	28.536	51.6										+	0			W			16.5 -19.2					Indistinct surface drift. Clear sky.		
	20	28.616	51.0										+	1	S		W			20.5 -21.0					Streets in horizon. Little surface drift.		
Sun 8 th	24	28.636	47.5											2	S					24.0 -14.4					7P.		
	4	28.652	41.0											1	S					4.5 -10.2					7P.		
	8.9	28.698	39.2	8.22 -17.2	-77	-22.0			SE	159	27	930		4	Ac CS	Ac CS	SE			8.52 -16.5					-17.5 -17.3 -18.0	Little surface drift. Must-over top of	
	12	28.732	45.4											1	S	18 hrs. C.		NW		12.5 -3.8					At 10h Ac clouds covered greater part of sky. These were moving slowly from ESE. Ice end at same time from NW.		
	16	28.710	45.8											2	S	CS ESE		NW		15.56 -11.5					Cl on horizon. Little		
	20	28.676	44.0											7	CS			NW		20.12 -17.0					Ac radiat. E-W		
	24	28.652	45.5											7	CS					24.2 -18					Ac General mist in N.W.	S.L.A.	
Mon 9 th	4	28.632	42											10	CS					4.2 -17					Ac General mist in N.W.	S.L.A.	

BRITISH ANTARCTIC

EXPEDITION, 1910.

Month of

October

191

Meteorological

Register kept at

Day	Hour	Barometer No.	Attd. Ther. No.	THERMOMETERS				WIND		ANEMOMETER		Weather	CLOUDS		CLOUDS Direction moving from			Rain or Snow	Hours Sunshine	AURORA				REMARKS	Initials of Observer		
				Dry Bulb No.	Max. No.	Spirit Min. No.	Solar Radn. No.	Terr. Radn. No.	Direction True	Force	Miles Read		3 Min. Later	Amount	Kind	Upper	Lower			Erebus Smoke	N	E	S			W	
Wed 11 th	8.2	28.826	43.0	8-16 -13.8	-5.6	-17.0			Calm	312	692	692	10	CS.			N.			8.41 -12.0					-13.6 -13.8 -14.3		
	12	28.852	44.0										10	CS.			NNW			12.2 -7.8						The clouds are thinner than at 8h.	
	16	28.856	44.7										10	CS.			N appn			16.6 -9.8						At radiant N-S. Motion indeterminate. Ist of ice in mist.	
		28.950	49.0										10							20.5 -7.8						Heavily overcast.	
	24	28.924	44.0										10							24.3 -8.5						"	
Thurs 12 th	4	28.948	41.2										10							4.6 -16.5						"	
	8.1	28.946	43.0	8-12 -12.0	-8.1	-18.8			SE	325	265	292	*	10						8.26 -11.0					-11.9 -12.0 -12.8	Fine snow falling.	
	12	28.968	50.1										*	10						12.5 -4.8						Fine snow falling NW breeze.	
	16	28.950	53.0										10					obs		4.2 +4.4						Erebus obscured W. Foothills clear	GT
	20	28.992	53.0										* +	10						20.5 +3.2						Little drift + probably some snow.	
	24	29.057	46.2										#	10				obs.		24.1 -3.2						Heavy drift	
13 th	4	29.103	44										↓	9.				obs.		3.55 -0.4						low drift on the sea ice Erebus clear.	Bliss

BRITISH ANTARCTIC

EXPEDITION, 1910.

Month of

191

Meteorological

Register kept at

101

Month of

Day	Hour	Barometer No.	Attd. Ther. No.	THERMOMETERS				WIND		ANEMOMETER		Weather	CLOUDS			Rain or Snow	Hours Sunshine	AURORA				REMARKS	Initials of Observer		
				Dry Bulb No.	Max. No.	Spirit Min. No.	Solar Radn. No.	Terr. Radn. No.	Direction True	Force	Miles Read		3 Min. Later	Amount	Kind			Upper	Lower	Erebus Smoke	N			E	S
Oct	8-00	29.188	43.2	8-14 +2.1	+3.2	-13.0			SE	374	082	206	4	S Ac			8-38 +2.8					+2.6 +2.2 +2.0	Top of Erebus in cloud.		
	12	29.372	52.1										1	Ac			12-3 +4.0						Cloud in south west.		
	16	29.470	49.8										2	Ac			16-3 +1.0						at 16.30 sky was becoming overcast with Ac. at about the height of Erebus; these were moving from the SE but not very fast. Then the heavy dark cloud in the SE.	Brink of Ac in SE. Erebus appears to be changing direction upward clouds moving very slowly. Lower ones seen against Erebus moving more rapidly.	
	20	29.570	50.0										8	Ac S			8-24 -2.0								
	24	29.650	54										10	Ac			11-56 -2.0							Erebus clear. clouds high -	
Int-14 ⁿ	4	29.672	49.5	8-12 -2.0	+6.9	-4.9			Cal	391	616	622	16	St Ac S			2-57 -4.2 8-27 -0.4						-1.6 -1.7 -2.2	high alt- in gradually passed into thin stratus	
	12	29.738	51.8										10	AS			12-3 +5.2								
	16	29.730	64.2										10	Ac AS			16-5 +5.0								
	20	29.682	57.4										10	Ac AS			20-7 +6.3								
	24	29.600	55.2										4	Ac S			24-1 +3.3								
Sat. 15 th	4	29.468	50.0										4	Ac S			4-3 +1.2								

BRITISH ANTARCTIC

EXPEDITION, 1910.

Month of

191

Meteorological

Register kept at

191

Month of

Day	Hour	Barometer	Attd. Ther.	THERMOMETERS				WIND		ANEMOMETER		Weather	CLOUDS		CLOUDS		Rain or Snow	Hours Sunshine	AURORA				REMARKS	Initials of Observer
				Dry Bulb	Max.	Spirit Min.	Solar Radn.	Terr. Radn.	Direction True	Force	Miles Read		3 Min. Later	Amount	Kind	Direction moving from			Upper	Lower	Erebus Smoke	N		
		No.	No.	No.	No.	No.	No.	No.																
Sun 15 th	7-59	29.316	48.0	5.22	-0.3	+9.2	-6.1		ESE	4.07	516	611	10	S	CS	SE		8.51					Enter smoke at foot more from SE than from NW	
	12	29.214	51.8										6	CS	E	SE		+1.2					had towards the south.	
	16	29.156	51.0										8	CS	ish ci	SE		12.00					Co. reds. ci. SE 8.33 8.51 1.0 1.1 1.2 1.3 1.4 1.5 1.6 1.7 1.8 1.9 2.0 2.1 2.2 2.3 2.4 2.5 2.6 2.7 2.8 2.9 3.0 3.1 3.2 3.3 3.4 3.5 3.6 3.7 3.8 3.9 4.0 4.1 4.2 4.3 4.4 4.5 4.6 4.7 4.8 4.9 5.0 5.1 5.2 5.3 5.4 5.5 5.6 5.7 5.8 5.9 6.0 6.1 6.2 6.3 6.4 6.5 6.6 6.7 6.8 6.9 7.0 7.1 7.2 7.3 7.4 7.5 7.6 7.7 7.8 7.9 8.0 8.1 8.2 8.3 8.4 8.5 8.6 8.7 8.8 8.9 9.0 9.1 9.2 9.3 9.4 9.5 9.6 9.7 9.8 9.9 10.0 10.1 10.2 10.3 10.4 10.5 10.6 10.7 10.8 10.9 11.0 11.1 11.2 11.3 11.4 11.5 11.6 11.7 11.8 11.9 12.0 12.1 12.2 12.3 12.4 12.5 12.6 12.7 12.8 12.9 13.0 13.1 13.2 13.3 13.4 13.5 13.6 13.7 13.8 13.9 14.0 14.1 14.2 14.3 14.4 14.5 14.6 14.7 14.8 14.9 15.0 15.1 15.2 15.3 15.4 15.5 15.6 15.7 15.8 15.9 16.0 16.1 16.2 16.3 16.4 16.5 16.6 16.7 16.8 16.9 17.0 17.1 17.2 17.3 17.4 17.5 17.6 17.7 17.8 17.9 18.0 18.1 18.2 18.3 18.4 18.5 18.6 18.7 18.8 18.9 19.0 19.1 19.2 19.3 19.4 19.5 19.6 19.7 19.8 19.9 20.0 20.1 20.2 20.3 20.4 20.5 20.6 20.7 20.8 20.9 21.0 21.1 21.2 21.3 21.4 21.5 21.6 21.7 21.8 21.9 22.0 22.1 22.2 22.3 22.4 22.5 22.6 22.7 22.8 22.9 23.0 23.1 23.2 23.3 23.4 23.5 23.6 23.7 23.8 23.9 24.0 24.1 24.2 24.3 24.4 24.5 24.6 24.7 24.8 24.9 25.0 25.1 25.2 25.3 25.4 25.5 25.6 25.7 25.8 25.9 26.0 26.1 26.2 26.3 26.4 26.5 26.6 26.7 26.8 26.9 27.0 27.1 27.2 27.3 27.4 27.5 27.6 27.7 27.8 27.9 28.0 28.1 28.2 28.3 28.4 28.5 28.6 28.7 28.8 28.9 29.0 29.1 29.2 29.3 29.4 29.5 29.6 29.7 29.8 29.9 30.0 30.1 30.2 30.3 30.4 30.5 30.6 30.7 30.8 30.9 31.0 31.1 31.2 31.3 31.4 31.5 31.6 31.7 31.8 31.9 32.0 32.1 32.2 32.3 32.4 32.5 32.6 32.7 32.8 32.9 33.0 33.1 33.2 33.3 33.4 33.5 33.6 33.7 33.8 33.9 34.0 34.1 34.2 34.3 34.4 34.5 34.6 34.7 34.8 34.9 35.0 35.1 35.2 35.3 35.4 35.5 35.6 35.7 35.8 35.9 36.0 36.1 36.2 36.3 36.4 36.5 36.6 36.7 36.8 36.9 37.0 37.1 37.2 37.3 37.4 37.5 37.6 37.7 37.8 37.9 38.0 38.1 38.2 38.3 38.4 38.5 38.6 38.7 38.8 38.9 39.0 39.1 39.2 39.3 39.4 39.5 39.6 39.7 39.8 39.9 40.0 40.1 40.2 40.3 40.4 40.5 40.6 40.7 40.8 40.9 41.0 41.1 41.2 41.3 41.4 41.5 41.6 41.7 41.8 41.9 42.0 42.1 42.2 42.3 42.4 42.5 42.6 42.7 42.8 42.9 43.0 43.1 43.2 43.3 43.4 43.5 43.6 43.7 43.8 43.9 44.0 44.1 44.2 44.3 44.4 44.5 44.6 44.7 44.8 44.9 45.0 45.1 45.2 45.3 45.4 45.5 45.6 45.7 45.8 45.9 46.0 46.1 46.2 46.3 46.4 46.5 46.6 46.7 46.8 46.9 47.0 47.1 47.2 47.3 47.4 47.5 47.6 47.7 47.8 47.9 48.0 48.1 48.2 48.3 48.4 48.5 48.6 48.7 48.8 48.9 49.0 49.1 49.2 49.3 49.4 49.5 49.6 49.7 49.8 49.9 50.0 50.1 50.2 50.3 50.4 50.5 50.6 50.7 50.8 50.9 51.0 51.1 51.2 51.3 51.4 51.5 51.6 51.7 51.8 51.9 52.0 52.1 52.2 52.3 52.4 52.5 52.6 52.7 52.8 52.9 53.0 53.1 53.2 53.3 53.4 53.5 53.6 53.7 53.8 53.9 54.0 54.1 54.2 54.3 54.4 54.5 54.6 54.7 54.8 54.9 55.0 55.1 55.2 55.3 55.4 55.5 55.6 55.7 55.8 55.9 56.0 56.1 56.2 56.3 56.4 56.5 56.6 56.7 56.8 56.9 57.0 57.1 57.2 57.3 57.4 57.5 57.6 57.7 57.8 57.9 58.0 58.1 58.2 58.3 58.4 58.5 58.6 58.7 58.8 58.9 59.0 59.1 59.2 59.3 59.4 59.5 59.6 59.7 59.8 59.9 60.0 60.1 60.2 60.3 60.4 60.5 60.6 60.7 60.8 60.9 61.0 61.1 61.2 61.3 61.4 61.5 61.6 61.7 61.8 61.9 62.0 62.1 62.2 62.3 62.4 62.5 62.6 62.7 62.8 62.9 63.0 63.1 63.2 63.3 63.4 63.5 63.6 63.7 63.8 63.9 64.0 64.1 64.2 64.3 64.4 64.5 64.6 64.7 64.8 64.9 65.0 65.1 65.2 65.3 65.4 65.5 65.6 65.7 65.8 65.9 66.0 66.1 66.2 66.3 66.4 66.5 66.6 66.7 66.8 66.9 67.0 67.1 67.2 67.3 67.4 67.5 67.6 67.7 67.8 67.9 68.0 68.1 68.2 68.3 68.4 68.5 68.6 68.7 68.8 68.9 69.0 69.1 69.2 69.3 69.4 69.5 69.6 69.7 69.8 69.9 70.0 70.1 70.2 70.3 70.4 70.5 70.6 70.7 70.8 70.9 71.0 71.1 71.2 71.3 71.4 71.5 71.6 71.7 71.8 71.9 72.0 72.1 72.2 72.3 72.4 72.5 72.6 72.7 72.8 72.9 73.0 73.1 73.2 73.3 73.4 73.5 73.6 73.7 73.8 73.9 74.0 74.1 74.2 74.3 74.4 74.5 74.6 74.7 74.8 74.9 75.0 75.1 75.2 75.3 75.4 75.5 75.6 75.7 75.8 75.9 76.0 76.1 76.2 76.3 76.4 76.5 76.6 76.7 76.8 76.9 77.0 77.1 77.2 77.3 77.4 77.5 77.6 77.7 77.8 77.9 78.0 78.1 78.2 78.3 78.4 78.5 78.6 78.7 78.8 78.9 79.0 79.1 79.2 79.3 79.4 79.5 79.6 79.7 79.8 79.9 80.0 80.1 80.2 80.3 80.4 80.5 80.6 80.7 80.8 80.9 81.0 81.1 81.2 81.3 81.4 81.5 81.6 81.7 81.8 81.9 82.0 82.1 82.2 82.3 82.4 82.5 82.6 82.7 82.8 82.9 83.0 83.1 83.2 83.3 83.4 83.5 83.6 83.7 83.8 83.9 84.0 84.1 84.2 84.3 84.4 84.5 84.6 84.7 84.8 84.9 85.0 85.1 85.2 85.3 85.4 85.5 85.6 85.7 85.8 85.9 86.0 86.1 86.2 86.3 86.4 86.5 86.6 86.7 86.8 86.9 87.0 87.1 87.2 87.3 87.4 87.5 87.6 87.7 87.8 87.9 88.0 88.1 88.2 88.3 88.4 88.5 88.6 88.7 88.8 88.9 89.0 89.1 89.2 89.3 89.4 89.5 89.6 89.7 89.8 89.9 90.0 90.1 90.2 90.3 90.4 90.5 90.6 90.7 90.8 90.9 91.0 91.1 91.2 91.3 91.4 91.5 91.6 91.7 91.8 91.9 92.0 92.1 92.2 92.3 92.4 92.5 92.6 92.7 92.8 92.9 93.0 93.1 93.2 93.3 93.4 93.5 93.6 93.7 93.8 93.9 94.0 94.1 94.2 94.3 94.4 94.5 94.6 94.7 94.8 94.9 95.0 95.1 95.2 95.3 95.4 95.5 95.6 95.7 95.8 95.9 96.0 96.1 96.2 96.3 96.4 96.5 96.6 96.7 96.8 96.9 97.0 97.1 97.2 97.3 97.4 97.5 97.6 97.7 97.8 97.9 98.0 98.1 98.2 98.3 98.4 98.5 98.6 98.7 98.8 98.9 99.0 99.1 99.2 99.3 99.4 99.5 99.6 99.7 99.8 99.9 100.0 100.1 100.2 100.3 100.4 100.5 100.6 100.7 100.8 100.9 101.0 101.1 101.2 101.3 101.4 101.5 101.6 101.7 101.8 101.9 102.0 102.1 102.2 102.3 102.4 102.5 102.6 102.7 102.8 102.9 103.0 103.1 103.2 103.3 103.4 103.5 103.6 103.7 103.8 103.9 104.0 104.1 104.2 104.3 104.4 104.5 104.6 104.7 104.8 104.9 105.0 105.1 105.2 105.3 105.4 105.5 105.6 105.7 105.8 105.9 106.0 106.1 106.2 106.3 106.4 106.5 106.6 106.7 106.8 106.9 107.0 107.1 107.2 107.3 107.4 107.5 107.6 107.7 107.8 107.9 108.0 108.1 108.2 108.3 108.4 108.5 108.6 108.7 108.8 108.9 109.0 109.1 109.2 109.3 109.4 109.5 109.6 109.7 109.8 109.9 110.0 110.1 110.2 110.3 110.4 110.5 110.6 110.7 110.8 110.9 111.0 111.1 111.2 111.3 111.4 111.5 111.6 111.7 111.8 111.9 112.0 112.1 112.2 112.3 112.4 112.5 112.6 112.7 112.8 112.9 113.0 113.1 113.2 113.3 113.4 113.5 113.6 113.7 113.8 113.9 114.0 114.1 114.2 114.3 114.4 114.5 114.6 114.7 114.8 114.9 115.0 115.1 115.2 115.3 115.4 115.5 115.6 115.7 115.8 115.9 116.0 116.1 116.2 116.3 116.4 116.5 116.6 116.7 116.8 116.9 117.0 117.1 117.2 117.3 117.4 117.5 117.6 117.7 117.8 117.9 118.0 118.1 118.2 118.3 118.4 118.5 118.6 118.7 118.8 118.9 119.0 119.1 119.2 119.3 119.4 119.5 119.6 119.7 119.8 119.9 120.0 120.1 120.2 120.3 120.4 120.5 120.6 120.7 120.8 120.9 121.0 121.1 121.2 121.3 121.4 121.5 121.6 121.7 121.8 121.9 122.0 122.1 122.2 122.3 122.4 122.5 122.6 122.7 122.8 122.9 123.0 123.1 123.2 123.3 123.4 123.5 123.6 123.7 123.8 123.9 124.0 124.1 124.2 124.3 124.4 124.5 124.6 124.7 124.8 124.9 125.0 125.1 125.2 125.3 125.4 125.5 125.6 125.7 125.8 125.9 126.0 126.1 126.2 126.3 126.4 126.5 126.6 126.7 126.8 126.9 127.0 127.1 127.2 127.3 127.4 127.5 127.6 127.7 127.8 127.9 128.0 128.1 128.2 128.3 128.4 128.5 128.6 128.7 128.8 128.9 129.0 129.1 129.2 129.3 129.4 129.5 129.6 129.7 129.8 129.9 130.0 130.1 130.2 130.3 130.4 130.5 130.6 130.7 130.8 130.9 131.0 131.1 131.2 131.3 131.4 131.5 131.6 131.7 131.8 131.9 132.0 132.1 132.2 132.3 132.4 132.5 132.6 132.7 132.8 132.9 133.0 133.1 133.2 133.3 133.4 133.5 133.6 133.7 133.8 133.9 134.0 134.1 134.2 134.3 134.4 134.5 134.6 134.7 134.8 134.9 135.0 135.1 135.2 135.3 135.4 135.5 135.6 135.7 135.8 135.9 136.0 136.1 136.2 136.3 136.4 136.5 136.6 136.7 136.8 136.9 137.0 137.1 137.2 137.3 137.4 137.5 137.6 137.7 137.8 137.9 138.0 138.1 138.2 138.3 138.4 138.5 138.6 138.7 138.8 138.9 139.0 139.1 139.2 139.3 139.4 139.5 139.6 139.7 139.8 139.9 140.0 140.1 140.2 140.3 140.4 140.5 140.6 140.7 140.8 140.9 141.0 141.1 141.2 141.3 141.4 141.5 141.6 141.7 141.8 141.9 142.0 142.1 142.2 142.3 142.4 142.5 142.6 142.7 142.8 142.9 143.0 143.1 143.2 143.3 143.4 143.5 143.6 143.7 143.8 143.9 144.0 144.1 144.2 144.3 144.4 144.5 144.6 144.7 144.8 144.9 145.0 145.1 145.2 145.3 145.4 145.5 145.6 145.7 145.8 145.9 146.0 146.1 146.2 146.3 146.4 146.5 146.6 146.7 146.8 146.9 147.0 147.1 147.2 147.3 147.4 147.5 147.6 147.7 147.8 147.9 148.0 148.1 148.2 148.3 148.4 148.5 148.6 148.7 148.8 148.9 149.0 149.1 149.2 149.3 149.4 149.5 149.6 149.7 149.8 149.9 150.0 150.1 150.2 150.3 150.4 150.5 150.6 150.7 150.8 150.9 151.0 151.1 151.2 151.3 151.4 151.5 151.6 151.7 151.8 151.9 152.0 152.1 152.2 152.3 152.4 152.5 152.6 152.7 152.8 152.9 153.0 153.1 153.2 153.3 153.4 153.5 153.6 153.7 153.8 153.9 154.0 154.1 154.2 154.3 154.4 154.5 154.6 154.7 154.8 154.9 155.0 155.1 155.2 155.3 155.4 155.5 155.6 155.7 155.8 155.9 156.0 156.1 156.2 156.3 156.4 156.5 156.6 156.7 156.8 156.9 157.0 157.1 157.2 157.3 157.4 157.5 157.6 157.7 157.8 157.9 158.0 158.1 158.2 158.3 158.4 158.5 158.6 158.7 158.8 158.9 159.0 159.1 159.2 159.3 159.4 159.5 159.6 159.7 159.8 159.9 160.0 160.1 160.2 160.3 160.4 160.5 160.6 160.7 160.8 160.9 161.0 161.1 161.2 161.3 161.4 161.5 161.6 161.7 161.8 161.9 162.0 162.1 162.2 162.3 162.4 162.5 162.6 162.7 162.8 162.9 163.0 163.1 163.2 163.3 163.4 163.5 163.6 163.7 163.8 163.9 164.0 164.1 164.2 164.3 164.4 164.5 164.6 164.7 164.8 164.9 165.0 165.1 165.2 165.3 165.4 165.5 165.6 165.7 165.8 165.9 166.0 166.1 166.2 166.3 166.4 166.5 166.6 166.7 166.8 166.9 167.0 167.1 167.2 167.3 167.4 167.5 167.6 167.7 167.8 167.9 168.0 168.1 168.2 168.3 168.4 168.5 168.6 168.7 168.8 168.9 169.0 169.1 169.2 169.3 169.4 169.5 169.6 169.7 169.8 169.9 170.0 170.1 170.2 170.3 170.4 170.5 170.6 170.7 170.8 170.9 171.0 171.1 171.2 171.3 171.4 171.5 171.6 171.7 171.8 171.9 172.0 172.1 172.2 172.3 172.4 172.5 172.6 172.7 172.8 172.9 173.0 173.1 173.2 173.3 173.4 173.5 173.6 173.7 173.8 173.9 174.0 174.1 174.2 174.3 174.4 174.5 174.6 174.7 174.8 174.9 175.0 175.1 175.2 175.3 175.4 175.5 175.6 175.7 175.8 175.9 176.0 176.1 176.2 176.3 176.4 176.5 176.6 176.7 176.8 176.9 177.0 177.1 177.2 177.3 177.4 177.5 177.6 177.7 177.8 177.9 178.0 178.1 178.2 178.3 178.4 178.5 178.6 178.7 178.8 178.9 179.0 179.1 179.2 179.3 179.4 179.5 179.6 179.7 179.8 179.9 180.0 180.1 180.2 180.3 180.4 180.5 180.6 180.7 180.8 180.9 181.0 181.1 181.2 181.3 181.4 181.5 181.6 181.7 181.8 181.9 182.0 182.1 182.2 182.3 182.4 182.5 182.6 182.7 182.8 182.9 183.0 183.1 183.2 183.3 183.4 183.5 183.6 183.7 183.8 183.9 184.0 184.1 184.2 184.3 184.4 184.5 184.6 184.7 184.8 184.9 185.0 185.1 185.2 185.3 185.4 185.5 185.6 185.7 185.8 185.9 186.0 186.1 186.2 186.3 186.4 186.5 186.6 186.7 186.8 186.9 187.0 187.1 187.2 187.3 187.4 187.5 187.6 187.7 187.8 187.9 188.0 188.1 188.2 188.3 188.4 188.5 188.6 188.7 188.8 188.9 189.0 189.1 189.2 189.3 189.4 189.5 189.6 189.7 189.8 189.9 190.0 190.1 190.2 190.3 190.4 190.5 190.6 190.7 190.8 190.9 191.0 191.1 191.2 191.3 191.4 191.5 191.6 191.7 191.8 191.9 192.0 192.1 192.2 192.3 192.4 192.5 192.6 192.7 192.8 192.9 193.0 193.1 193.2 193.3 193.4 193.5 193.6 193.7 193.8 193.9 194.0 194.1 194.2 194.3 194.4 194.5 194.6 194.7 194.8 194.9 195.0 195.1 195.2 195.3 195.4 195.5 195.6 195.7 195.8 195.9 196.0 196.1 196.2 196.3 196.4 196.5 196.6 196.7 196.8 196.9 197.0 197.1 197.2 197.3 197.4 197.5 197.6 197.7 197.8 197.9 198.0 198.1 198.2 198.3 198.4 198.5 198.6 198.7 198.8 198.9 199.0 199.1 199.2 199.3 199.4 199.5 199.6 199.7 199.8 199.9 200.0 200.1 200.2 200.3 200.4 200.5 200.6 200.7 200.8 200.9 201.0 201.1 201.2 201.3 201.4 201.5 201.6 201.7 201.8 201.9 202.0 202.1 202.2 202.3 202.4 202.5 202.6 202.7 202.8 202.9 203.0 203.1 203.2 203.3 203.4 203.5 203.6 203.7 203.8 203.9 204.0 204.1 204.2 204.3 204.4 204.5 204.6 204.7 204.8 204.9 205.0 205.1 205.2 205.3 205.4 205.5 205.6 205.7 205.8 205.9 206.0 206.1 206.2 206.3 206.4 206.5 206.6 206.7 206.8 206.9 207.0 207.1 207.2 207.3 207.4 207.5 207.6 207.7 207.8 207.9 208.0 208.1 208.2 208.3 208.4 208.5 208.6 208.7 208.8 208.9 209.0 209.1 209.2 209.3 209.4 209.5 209.6 209.7 209.8 209.9 210.0 210.1 210.2 210.3 210.4 210.5 210.6 210.7 21	

BRITISH ANTARCTIC

EXPEDITION, 1910.

Month of

191

Meteorological

Register kept at

191

Month of

Day	Hour	Barometer	Attd. Ther.	THERMOMETERS				WIND		ANEMOMETER		Weather	CLOUDS		CLOUDS		Rain or Snow	Hours Sunshine	AURORA				REMARKS	Initials of Observer		
				Dry Bulb	Max.	Spirit Min.	Solar Radn.	Terr. Radn.	Direction True	Force	Miles Read		3 Min. Later	Amount	Kind	Direction moving from			Erebus Smoke	N	E	S			W	
																Upper										Lower
Tues 17 th	8-1	28.658	420	8-26	-25.0	-5.7	-23.3		NNW	500	899	919	32	1	S	10 km Acn	NW	8-40					10 km. covered with Acn. some with NW.			
	12	28.684	443										10					11-57					By has become overcast.			
	16	28.738	49-1										5	AS Acn		Acn		16-02					The clouds have broken & there are large masses of low Acn moving from SSE!			
	20	28.798	47-4										8	S Acn		Acn		9-58					Clouds moving very much more slowly			
	24	28.832	45-7										10					-5-0					Sky completely overcast	ACB		
Wed 18 th	4	28.816	43-7										10					24-0					overcast - slight snowfall	ACB		
	7-58	28.816	40-8	8-13	+5.4	+9.0	-23.6		SE	534	472	681	* ♂	10				8-23					moderate drift. Little snow			
		28.870	48-2										* ♂	10				+6-0					thick drift & fine snow which to evening on horizontal side	stich		
		28.890	53-2										* ♂	10	Cs S			12-10					Weather clearing, and cirrus can be seen	clouds		
		28.956	51-2										♂	10	Cs S			+4-7					little mod drift			
	24	28.964	44-6										0. ♂	10	St			16-6					Clearer & less drifting very heavily	ACB		
19 th	4	28.912	41										0 S	10	Ci-Str			20-6					Clearer ditto less drift. Sky breaking S & NW	ACB		
																		+5-8								
																		23-58								
																		+4-0								
																		4-2								
																		-0-8								

BRITISH ANTARCTIC

EXPEDITION, 1910.

Month of

191

Meteorological

Register kept at

Station to Day	Hour	Barometer No.	Attd. Ther. No.	THERMOMETERS				WIND		ANEMOMETER		Weather	CLOUDS		CLOUDS			Rain or Snow	Hours Sunshine	AURORA				REMARKS	Initials of Observer		
				Dry Bulb No.	Max. No.	Spirit Min. No.	Solar Radn. No.	Terr. Radn. No.	Direction True	Force	Miles Read		3 Min. Later	Amount	Kind	Upper	Lower			Erebus Smoke	N	E	S			W	
Thurs 19	8-2	28.868	39.6	8-19 +2.0	-7.3	-5.7			ESE	642.264	462	⊕	10	C.S.			SE		8-58 +2.0					+2.2 +1.2 +1.7	Cirradiant SSE. Part of 20' halo Moderate surface drift. Mod surface drift, sunshiny then thin C.S. Cirradiant S. C.S. cloud are very thin + sky is bluish. Few low clouds in NW.		
		28.800	47.0									⊕	10	C.S.					12-10 +2.0								
		28.712	51.0										10	C.S.					15-57 +1.7								
		28.664	50.4										6	C.S.					20.3 -1.5								
		28.572	48.0										10	C.S.					24.0 -1.0								
Friday 20	4	28.576	46.5									*	10	C.S.					4.0 -1.0								YJ
	7-59	28.588	47.0	8-18 +3.5	+4.6	-7.3			NE	685.943	976	*	10						8-35 +4.2							Slightly snowing. moderately heavy overcast. Sky clear east horizon. Little sun little sun piling.	YJ
		28.628	52.0									*	10						12-6 +1.5								
	4-45	28.688	50.2										9						4-20 -0.2								
		28.788	50.0										3	S A.C.					20.3 -9.0							Blue sky to S. Heavy rolls of clouds near this for Dry after the heavy layer of clouds has moved to north. It has a very well marked pointed edge & thin cumuli to be seen in NW when it is more cloud 5° above horizon	
	2-40	28.850	47.2										3	C.S.					24.1 -6.7								
Sat 21	4-2	28.880	44.5										10	C.S.			NW		4.1 -2.5							Light clouds overcast	YJ

BRITISH ANTARCTIC

EXPEDITION, 1910.

Month of

191

Meteorological

Register kept at

Day	Hour	Barometer	Attd. Ther.	THERMOMETERS				WIND		ANEMOMETER		Weather	CLOUDS		CLOUDS		Rain or Snow	Hours Sunshine	AURORA				REMARKS	Initials of Observer		
				Dry Bulb	Max.	Spirit Min.	Solar Radn.	Terr. Radn.	Direction True	Force	Miles Read		3 Min. Later	Amount	Kind	Upper			Lower	Erebus Smoke	N	E			S	W
No.	No.	No.	No.	No.	No.	No.	No.	No.	No.	No.	No.	No.	No.	No.	No.	No.	No.	No.	No.	No.	No.	No.	No.			
Lat 21 st	8-1	28.908	45.5	59	+38	-12.9			SE		738534	709		10	CS			W		8-50					Heavy bank of clouds in south	
		28.910	50.2											10	CS			NW		-3.1						
		28.794	48.4											10	CS			W		12.7						
		28.704	50.0											10	CS			W		-1.0						
	24	28.610	48.5											5	CS	(nostril to N)		NW		18.6						
Sunday 22 nd	4	28.558	45.6											4	CS			NW		+2.2						
	8-10	28.544	44.2	-3.2	+1.8	-9.9			SE		771592	601		4	CS			NW		20.2						
	12.25	28.600	50.0											10	CS			NW		-0.7						
	16.50	28.665	49.8											10	CS					0.7						
	20	28.714	52.0											10	S					-1.8						
	24.2	28.760	48.1											9						4.4						
Monday	4.10	28.784	46.7											4	CS			NW		-10.4						
																				8-41						
																				-4.5						
																				12.30						
																				-0.5						
																				16.50						
																				-10.0						
																				20.5						
																				-7.5						
																				24.4						
																				-4.0						
																				24.10						
																				-7.5						

BRITISH ANTARCTIC

EXPEDITION, 1910.

Month of

191

Meteorological

Register kept at

Day	Hour	Barometer No.	Attd. Ther. No.	THERMOMETERS				WIND		ANEMOMETER		Weather	CLOUDS		CLOUDS Direction moving from			Rain or Snow	Hours Sunshine	AURORA				REMARKS	Initials of Observer						
				Dry Bulb No.	Max. No.	Spirit Min. No.	Solar Radn. No.	Terr. Radn. No.	Direction True	Force	Miles Read		3 Min. Later	Amount	Kind	Upper	Lower			Erebus Smoke	N	E	S			W					
Mon 23 rd	8-3	28.744	46.0	8-12 -7.3	+0.4	-14.8						Calm	816	160	160	W.	2	AG S			W.		8-44 +0.5					Stratus on horizon & in south.			
	12-33	28.669	46.0									W	9	ciS			ci S 60 E		12.32 -0.6 16.05 +1.2 20.5 0.0 24.2 -5.1 4.1 -6.2							Gradual E Erebus top in cloud. Fairly heavy overcast with low clouds Part of 20 th h.	SLW.				
	16	28.594	47.0									W	10				ciS AS	21.3 AG S 60 E													
	20	28.520	53.0									W	10																		
Tues 24 th	MN	28.420	47.8									W	2																		
	4	28.364	45.5									W	0																		
	7-8	28.396	44.8	8-11 -9.3	-0.5	-11.7						ESE	854	681	733	W	0					W.		8-35 -7.8 11.55 -5.5 14.7 6.0 20.7 +2.0 24.15 +0.0 4.10 -1.5				-9.2 -9.1 -9.8	Little stratus in south.		
	12	28.474	49.2									W	0									W.									
	16	28.544	53.0										7	AG S			AG S 45 E					W									
	20	28.628	55.0										7	ci AS			ci S 30 W					NW									
	24	28.718	50.5									*	10	ci																	
Wed 25	4	28.750	48.0									W	0																	Slightly snowing	SLW.

EXPEDITION, 1910.

Meteorological

79

GT

EXPEDITION, 1910.

Month of _____

191

Meteorological

Register kept at

Day	Hour	Barometer	Attd. Ther.	THERMOMETERS				WIND		ANEMOMETER		Weather	CLOUDS		CLOUDS			Rain or Snow	Hours Sunshine	AURORA				REMARKS	Initials of Observer		
				Dry Bulb	Max.	Spirit Min.	Solar Radn.	Terr. Radn.	Direction True	Force	Miles Read		3 Min. Later	Amount	Kind	Upper	Lower			Erebus Smoke	N	E	S			W	
		No.	No.	No.	No.	No.	No.	No.																			
Sun 29 th	7-58	28.636	45.0	8-19 +4.6	+5.9	-5.0			NNW	056	055	106		0			W			8.33					+4.7	Little Strata in S.E.	
		28.628	48.3											0			W			+11.0					4.7	4.2	
		28.616	49.8											0			W			11.55							
		28.650	46.7											0			W			+10.5							
																			11.8								
														0			SW			+8.0							little strata over W mountains.
																			20.8								
	24	28.716	47.0											0					+2.2								ST over W mountains.
														D					23.58								ch.
Mon 30 th	4	28.746	44.2											1	AS				-4.8								
	7-56	28.740	46.2	2.22 +2.0	+8.8	-3.8			W	075	460	476		2	S Cir	10-30 1 AS 50E	SE		3.54								ST " increased
		28.882	48.6											5	AS Alc	1 AS 50E			-4.2								Heavy Cir clouds over Barrier to E +
		28.988	50.5										*	10					8.41						2.1		Heavy stratus to S.
		29.070	52.0										*	10					+7.0						2.3	2.1	
		29.120	44.8										*	10					12.7								More snow & drift
		29.176	42.0										*	10					+8.0								Heavy snow & drift
													*	10					16.5								Little snow on top
													*	10					+7.5								Little but less than previous

EXPEDITION, 1910.

Month of

191

Meteorological

Register kept at

[illegible]

BRITISH ANTARCTIC

EXPEDITION, 1910.

Month of

191

Meteorological

Register kept at

Day	Hour	Barometer	Attd. Ther.	THERMOMETERS					WIND		ANEMOMETER		Weather	CLOUDS		CLOUDS			Rain or Snow	Hours Sunshine	AURORA				REMARKS	Initials of Observer	
				Dry Bulb	Max.	Spirit Min.	Solar Radn.	Terr. Radn.	Direction True	Force	Miles Read	3 Min. Later		Amount	Kind	Upper	Lower	Erebus Smoke			N	E	S	W			
Mon 2 nd	8.00	29.600	41.2	+6.4	7.8	-0.2			SE	268	530	741		10	CS			N.	9.11						22° hds. Practically no drift		
	12	29.592	420											10	CS.			E.	+7.0						5.3 5.8		
	16	29.596	41.1											10	CS			SE	11.55								
	20	29.594	407											7	CS			SE	+11.0								
Fri 3 rd	MN	29.552	41.8											10	CS			K	15.56							Canadians WNW.	
	4	29.518	39.4											10	CS				+12.0								
	8-6	29.500	37.1	+20.7	+11.0	+3.4			SE	343	812	937		3	CS			SW.	20.0.								
		29.474	44.1											10	CS				+13.0								
	16.4	29.420	46.5											10	CS			W	23.54								
		29.380	44.8											7	CS			NW	+11.6								
	24.2	29.350	44.0											9	CS			NW	4.50								
	4	No obs.																WNW	+16.0								
																			8.41								
																			+21.0								
																			12.8								
																			21.5								
																			16.7								
																			+18.6								
																			20.5								
																			+18.0								
																			20.4								
																			+6.0								

EXPEDITION, 1910.

191

Meteorological

Register kept at

[illegible]

BRITISH ANTARCTIC

EXPEDITION, 1910.

Month of

191

Meteorological

Register kept at

191

Month of

Nov

Day	Hour	Barometer No.	Attd. Ther. No.	THERMOMETERS				Terr. Radn. No.	WIND		ANEMOMETER		Weather	CLOUDS		CLOUDS		Rain or Snow	Hours Sunshine	AURORA				REMARKS	Initials of Observer
				Dry Bulb No.	Max. No.	Spirit Min. No.	Solar Radn. No.		Direction True	Force	Miles Read	3 Min. Later		Amount	Kind	Upper	Lower			N	E	S	W		
Fri 10*	7.58	29.266	42.8	8.33	25.8	7.1			SE		703031	209	± *	10	Alc	Ac	N20E		8.50					Little snow & drift.	
		29.348	46.7											10					14.0						
		29.378	44.2										*	10					12.5						
		29.414	48.0											8	B	Ac			10.2						
	23.45	29.404	42.8											6	Alc				16.4						Little snow
		29.384	38.0											7	Alc				11.0						
	8.5	29.376	37.0	8.22	12.9	3.5			SE		775041	092		9	S	Ac	N20E N		20.7						The clouds then out to Alc
		29.394	40.4	8.0										9	S	Ac	N30E		8.0						offered like stationary
		29.382	49.6											9	S	Ac			23.48						
		29.386	52.8											9	S	Ac			6.7						
24		29.380	50.8											7	S	Ac			4.60						
		29.354	46.2											8	S	Ac			4.8						
																			5.36						
																			9.8						
																			12.5						
																			9.5						
																			15.58						
																			11						
																			20.3						
																			11.8						
																			23.58						
																			9.5						
																			3.58						
																			9.8						
																									End of W. mountain obscured.

BRITISH ANTARCTIC

EXPEDITION, 1910.

Month of

191

Meteorological

Register kept at

191

Month of

Day	Hour	Barometer No.	Attd. Ther. No.	THERMOMETERS				Solar Radn. No.	Terr. Radn. No.	WIND		ANEMOMETER		Weather	CLOUDS		Rain or Snow	Hours Sunshine	AURORA				REMARKS	Initials of Observer			
				Dry Bulb No.	Max. No.	Spirit Min. No.	Direction True			Force	Miles Read	3 Min. Later	Amount		Kind	Upper			Lower	Erebus Smoke	N	E			S	W	
Nov 12 th	8-6	29.350	43.8	8-12 11.0	13.3	6.2				SSE	790	181	211	*	9	S Acn C.S.		E		8-37 13.0					11.0 10.9	Heavy stratus in south.	
	12	29.364	46.5											*	9	S Acn		W.		12.5 16.3							
	16.30	29.414	53.3											*	10	S Acn				16.30 15.9						Slightly snowing.	
		29.488	54.0											*	8	S				20.5 13.2						little snow.	
	23.50	29.454	53.0											*	6	S Acn				23.50 12.3						Many S clouds.	
Nov 13 th		29.446	47.0												7	S Acn		N		4.00 9.0						Clear overhead with Acn.	
	8-6	29.456	45.2	8-28 12.0	16.0	8.9				SE	833	396	515		7	S Acn		AC S45E		9.52 14.5						Snowing briskly.	
	12	29.490	53.0											*	10					12.3 16.0						Very little snow.	
	16	29.474	52.0											*	10					16.4 14.0						little snow.	
	20	29.486	49.8												9	AS, Acn S		Acn N		20.5 11.2						li radiant N.	
	2A	29.474	49.0												7	Acn S				28.55 11.2							
	4	29.452	43.5												10	AS				4.00 9.2							

BRITISH ANTARCTIC

EXPEDITION, 1910.

Nov

Month of

191

Meteorological

Register kept at

Day	Hour	Barometer	Attd. Ther.	THERMOMETERS				WIND		ANEMOMETER		Weather	CLOUDS		CLOUDS		Rain or Snow	Hours Sunshine	AURORA				REMARKS	Initials of Observer	
				Dry Bulb	Max.	Spirit Min.	Solar Radn.	Terr. Radn.	Direction True	Force	Miles Read		3 Min. Later	Amount	Kind	Direction moving from			Erebus Smoke	N	E	S			W
		No.	No.	No.	No.	No.	No.	No.					Upper	Lower											
Tues 14 th	8-7	29.466	43.8	8-23					SE	899	663	826	±	10	AS ACu		ACu		8-39				9.3	Little drift	
	12	29.488	47.2	9.2	17.0	8.1								8	S ACu		N40E ACu		10.0 11.58				9.4 9.1	White broken thick over land.	
	16	29.488	50.0											8	CS AS ACu		N15E N		11.7 16.3 12.0					Ci radiant. NNW.	
	20	29.486	67.5											10	CS AS ACu		ACu N10E		20.19 11.0 24.0 10.8						
	24	29.500	47.0																						
Wed 15 th	4	29.506	45.7											8	CS AS ACu				3.57 8.2						
	8.7	29.544	46.0	8.20					Calm	957	814	822		9	AS ACu		ACu N10E		8.37 15.0				10.0 9.9 9.2		
	11.1	29.564	45.8											8	AS ACu		ACu N10E		11.3 18.0						
	16	29.588	47.0											10					16.3 15.2					Fairly heavy overcast.	
	20	29.622	51.8											10					20.6 14.2						
	23.55	29.624	51.0											10					+11.5						
	4	29.610	46.0											10					3.56 7.8						

BRITISH ANTARCTIC EXPEDITION, 1910.

Month of

191

Meteorological

Register kept at

Day	Hour	Barometer	Attd. Ther.	THERMOMETERS				WIND		ANEMOMETER		Weather	CLOUDS		CLOUDS		Rain or Snow	Hours Sunshine	AURORA				REMARKS	Initials of Observer
				Dry Bulb	Max.	Spirit Min.	Solar Radn.	Terr. Radn.	Direction True	Force	Miles Read		3 Min. Later	Amount	Kind	Direction moving from			Erebus Smoke	N	E	S		
		No.	No.	No.	No.	No.	No.	No.					Upper	Lower										
Thurs 16	2.5	29.604	43.0	9.0	15.8	5.0			SSE	99	268	407	*				8-40					9.0	Little rain.	
		29.638	47.8										* ±				9.5					9.0 9.0	Little snow & drizzle	
		29.636	51.0														12.0							
		29.622	54.0														6.2							
																	16.13							
																	9.1							
																	20.00							
																	8.0							By clear over W. Mountain.
	23.58	29.520	49.8														4.8							sky clear except for long f. stratus in N. & very slight current in S.
Fri 17 th	4	29.542	44.6														3.55							
																	0.2							
	8.00	29.538	41.0	8.21					SE	048	611	733					8.41					-1.5	Little stratus over S. horizon	
				-1.7	+9.0	-4.7											7.13					-1.7-2.0		
	12	29.550	47.3														12.4							
	16	29.550	48.9														8.5							Clouds over Ross Glacier.
		29.556	50.7														16.11							Little stratus cloud over W. Mountain
		29.552	47.4														12.2							First clouds over Ross Glacier
		29.548	44.1														20.7							Little ditto
																	10.0							
																	23.53							
																	8.5							
																	4.0							
																	6.7							

BRITISH ANTARCTIC

EXPEDITION, 1910.

Month of

191

Meteorological

Register kept at

Day	Hour	Barometer No.	Attd. Ther. No.	THERMOMETERS				Terr. Radn. No.	WIND		ANEMOMETER		Weather	CLOUDS		CLOUDS		Rain or Snow	Hours Sunshine	AURORA				REMARKS	Initials of Observer
				Dry Bulb No.	Max. No.	Spirit Min. No.	Solar Radn. No.		Direction True	Force	Miles Read	3 Min. Later		Amount	Kind	Upper	Lower			N	E	S	W		
Lat Nov 18.	8-7.	29.564	43.7	8-19 6.5	10.8	-2.0			SSE	09.8	633	706		0				W.	8-33 9-0					6.5	
		29.595	47.2											0				W	12-00					6.6	6.1
		29.598	47.0											0				W	12-2						
		29.614	46.7											0				W	15-53 14-0						
		29.631	47.6											0				W	20-4 12-0						
Sun Nov 19	4	29.626	45.1											0				W	11-53 0-5						
	8-33	29.634	45.1	8-43 10.7	15.8	4.2			Cal.	11.3	430	443		0				W.	4-00 6-8					10.6	Thin streak of stratus on SE horizon
	12	29.642	46.0											0				W	9-5 13-8					11.0	10.0
	16	29.662	49.4											0				W	12-1 14-0						
	20	29.680	49.2											0				SW	16-7 14-0						
	23-9	29.684	47.5											0						19-56 11-4					
		29.685	46.6											0				SW	9-75 3-57						

BRITISH ANTARCTIC

EXPEDITION, 1910.

Month of

191

Meteorological

Register kept at

Day	Hour	Barometer No.	Attd. Ther. No.	THERMOMETERS				WIND		ANEMOMETER		Weather	CLOUDS		CLOUDS		Rain or Snow	Hours Sunshine	AURORA				REMARKS	Initials of Observer
				Dry Bulb No.	Max. No.	Spirit Min. No.	Solar Radn. No.	Terr. Radn. No.	Direction True	Force	Miles Read		3 Min. Later	Amount	Kind	Upper			Lower	Erebus Smoke	N	E		
Mon 20	8-7	29.720	47.1	8-28 9.0	15.3	78			SSE	122	745	770	W	6			W.	9-46 12.0					9.0	
	12	29.864	58.0										W	4										
	16	29.926	57.8										W	0			SW.	16.5 +17.0						
		29.960	57.0										W	0			K	20.8 13.8						
	24	29.960	57.0										W	0				24.1 +12.8						
Tues 21 st	4	No obs.											W											
	7-8	29.980	51.0	8-21 10.3	18.0	8.1			SSE	130	394	414	W	8	C-S	N 75 W refn			8-41 13.3				10.7	C. nidiar W. Part of
		29.968	52.8										W	8	C-S				12.3				10.7 10.0	22. hula. Cloud caps on hills
		29.948	52.6										W	9	AS				18.0					C. nidiar WNW
		29.930	57.0										W	7	AS				16.03					hula. 1st part in clouds
		No obs.																15.0						The clouds are higher & lighter.
		29.878	52.1										W	1	C				20.0 15.3					
																			3.59. 10.2					

BRITISH ANTARCTIC

EXPEDITION, 1910.

Month of

191

Meteorological

Register kept at

Day	Hour	Barometer No.	Attd. Ther. No.	THERMOMETERS				Solar Radn. No.	Terr. Radn. No.	WIND		ANEMOMETER		Weather	CLOUDS		CLOUDS		Rain or Snow	Hours Sunshine	AURORA				REMARKS	Initials of Observer
				Dry Bulb No.	Max. No.	Spirit Min. No.				Direction True	Force	Miles Read	3 Min. Later		Amount	Kind	Direction moving from	Erebus Smoke			N	E	S	W		
Wed 22	800	29.868	53.0	8-24 7.9	17.5	5.0				SSE	14.9	23.8	29.8	W	5	Alc Alc S	Alc Alc S 70 E	W.	8-41 9-5.					7-9	Heavy clouds in south.	
	12																									
	16																									
	20	29.890	51.0												10					20.9 10-8						
	24																									
Thurs 23	4	29.866	43.5												8	AS AS				3-50 +9-0						
	8-6	29.868	39.8	8-23 10.8	10.9	5.7				SSE	20.0	43.1	52.8		4	AS Alc		NW.		9-37 12-8	10.4					
		29.930	49.0												7	AS Alc Alc	Alc Alc Alc	NW		12-10 20-1						
		30.006	53.0												8	AS Alc				16-5 14-2						
		30.060	52.0												2	AS Alc		NW		20-5 14-2						
		30.100	49.6												1	AS		NW		21-54 13-0						

BRITISH ANTARCTIC

EXPEDITION, 1910.

Month of

191

Meteorological

Register kept at

Day	Hour	Barometer No.	Attd. Ther. No.	THERMOMETERS					WIND		ANEMOMETER		Weather	CLOUDS		CLOUDS		Rain or Snow	Hours Sunshine	AURORA				REMARKS	Initials of Observer		
				Dry Bulb No.	Max. No.	Spirit Min. No.	Solar Radn. No.	Terr. Radn. No.	Direction True	Force	Miles Read	3 Min. Later		Amount	Kind	Upper	Lower			Erebus Smoke	N	E	S			W	
Mon 24 th	8-00	30.112	44.1	13.0	18.1	-				E	257	317	332	1	Cu			NW	8.36					12.8	Cu clouds over Bluff and in NW		
	12	30.140	54.0											2	Cu low Cu			W	14.5 12.14 14.0					13.0			
	16	30.104	54.0											4	Cu Cu			NW	16.5 18.5								
	20	30.076	54.0											0				NW	19.53 15.0						Little Aln & Ci		
	23	30.040	52.2											4	Aln				22.5 14.2						24 of below in cloud		
Sat 25 th	4	Ans obs																									
	7.57	29.898	50.0	8.23 13.6	17.3	11.3				SE	270	325	354	1	S				8.57 15.4 12.1					13.8	Sketch clouds in E. Erebus smoke first		
	12	29.830	47.0											1	C			S	16.0 16.5					14.8	13.4	Sketch clouds in E. Erebus smoke first	
	16	29.772	55.3											0				S	21.8								
	20	29.708	55.0											0				K	20.3 17.2								
	24																										
	4	29.572	49.5											0				K	4.0 19.0								

BRITISH ANTARCTIC EXPEDITION, 1910.

Month of

191

Meteorological

Register kept at

Day	Hour	Barometer No.	Attd. Ther. No.	THERMOMETERS					WIND		ANEMOMETER		Weather	CLOUDS		CLOUDS		Rain or Snow	Hours Sunshine	AURORA				REMARKS	Initials of Observer
				Dry Bulb No.	Max. No.	Spirit Min. No.	Solar Radn. No.	Terr. Radn. No.	Direction True	Force	Miles Read	3 Min. Later		Amount	Kind	Upper	Lower			N	E	S	W		
Mon 26 th	8-4	29.520	47.0	8-27 15.8	20.5	8-0			N		289	068	093	1	S			K.	8-40 21-0	16-2				Low station in S.E. Saw base of little	
	12	29.524	53.0											0				S.	12-4 20-0	16-4	15-9			Free water on edges of ponds.	
	16	29.498	53.0											8	AS	AS	S.		15-59 23-0					Top of End in cloud.	
	20	29.484	53.7											10					20-4 23-0					Fairly heavy overcast	
	24	29.496	51.0											10					23-57 20-0						
Mon 27 th	4			8-31 15.6	20.9	12-8			SE		313	576	712	4	AS				8-50 17-2	16-0				Top of End in cloud.	
	8-00	29.524	43.8											2	AS				12-5 17-0	16-0	15-7			Clouds on south horizon, End in cloud closed.	
	12	29.638	50.0											2	AS				16-3 18-0						
		29.678	50.0											2	S				20-7 21-0					Very thick squall in NW. Top of End in cloud.	
		29.716	50.5											8	Ni										
		29.788	50.0											1	S			W	6-03 23-8					Dark station in NW.	

BRITISH ANTARCTIC

EXPEDITION, 1910.

Month of

191

Meteorological

Register kept at

191

Month of

Day	Hour	Barometer	Attd. Ther.	THERMOMETERS				Terr. Radn.	WIND		ANEMOMETER		Weather	CLOUDS		CLOUDS		Rain or Snow	Hours Sunshine	AURORA				REMARKS	Initials of Observer		
				Dry Bulb	Max.	Spirit Min.	Solar Radn.		Direction True	Force	Miles Read	3 Min. Later		Amount	Kind	Upper	Lower			Erebus Smoke	N	E	S			W	
Tue 28	8-7	29.828	50.2	8.32 19.0	19.8	13.7			SE	34.0	230	255		8	Ac S 7.5		Ac NW		8.47 20.5					19.2	Erebus in cloud. Dark clouds in NW		
		29.866	54.0										10	S 6				12.17 23.0					19.2	18.9	By fair being overcast with S under which there are the clouds except the W. mountains and in NW Very little fine snow		
		29.866	55.0																								
		29.872	55.0										8	Ac Ac 7.5 6		Ac NW very cloudy	W	20.3 21.0 23.57 20.1						Thick weather in West. Ci clouds in NW.			
	MN	29.862	55.2										5	6.5			W										
Wed 29 th	8-6	29.832	55.0	8.23 17.0	15.0	14.8			SE	24.8	931	962		3	Ci			NW	8-30 19.0					16.7 17.0	16.6	Ci in all parts of sky. Little Cu in NW.	
		29.812	55.0										2	Ci S			NW	12.9 21.2									
		29.800	55.2										7	Ac S Ac S 6		Ac NW very cloudy		16.5 21.8 20.10 19.2							During afternoon sky became overcast with Ci which became thicker. There were some thin clouds all the morning have been in the NW. Ci over NW in NW.		
		29.816	55.5										9	Ac 6		NW very cloudy		16.6									
		29.828	56.																16.6								
	24.3	29.824	55.2											10	Ci S			NW	3.57 17.0								

EXPEDITION, 1910.

Month of _____

191

Meteorological

Register kept at

Day	Hour	Barometer	Attd. Ther.	THERMOMETERS				WIND		ANEMOMETER		Weather	CLOUDS		Rain or Snow	Hours Sunshine	AURORA				REMARKS	Initials of Observer		
				Dry Bulb	Max.	Spirit Min.	Solar Radn.	Terr. Radn.	Direction True	Force	Miles Read		3 Min. Later	Amount			Kind	Upper	Lower	Erebus Smoke			N	E
Nov-Dec		No.	No.	No.	No.	No.	No.	No.																
Thurs 30 th	8-5	29.840	50.6	8.19 17.0	21.8	13.0			SSE	360	918	946	7	C-S		8-42				17.0	Most clouds over Erebus			
		29.868	52.8									*	9	C-S		20.0				17.2	16.8	Little snow in feather flakes		
		29.876	53.0									*	9	S		12.3						Little snow falling. By clear in south		
	20.30	29.908	56.0									*	10			24.2						Fairly heavy snow in feather flakes.		
		29.914	52.2									*	10			16.6						Settle		
																17.2								
																8.32								
																15.0								
																23.51								
																11.0								
Friday 1 st				8.24 14.5																				
	8-5	29.884	45.2	20.3	8.0				NW.	376	533	560	*	10		8-44				15.0	15.0	14.5	Little snow in film of few large crystals (blowing away)	
		29.892	47.4										w *	10		17.5							Few flakes of snow. Weather clearing	
		29.862	50.8											10		12.00							Few or two patches of blue sky.	
		29.874	54.0											9	Air Fg S	18.0							Today snow has melted on dark objects even out of the sun.	
	24	29.864	52.2											10		15.55-							There is a lot of open water round the edges of the ponds.	
		29.874	50.8											10		16.0							Very heavy overcast	
																20.5								
																16.2								
																24.1								
																+16.7								
																6.0								
																17.0								

BRITISH ANTARCTIC

EXPEDITION, 1910.

Month of

191

Meteorological

Register kept at

Day	Hour	Barometer No.	Attd. Ther. No.	THERMOMETERS				WIND Direction True	Force	ANEMOMETER		Weather	CLOUDS		Rain or Snow	Hours Sunshine	AURORA				REMARKS	Initials of Observer
				Dry Bulb No.	Max. No.	Spirit Min. No.	Solar Radn. No.			Terr. Radn. No.	Miles Read		3 Min. Later	Amount			Kind	Upper	Lower	Erebus Smoke		
Decem																						
Sat 2 nd	8-7	29.818	49.0	15.0	16.8	13.5		WNW	385	460	477	W	9	AL S C.	8-40 19.3					15.2 15.3 14.8	Cumulus over mountain	
		29.804	50.5										2	AL C.	11-55 19.2							
		29.794	54.0										0	C.	15.43 16.0						Little cum in NW	
		29.770	54.2										1	Sc.	20.5 16.0						Clouds on horizon.	
		29.720	52.0										2	CoS AS	23.58 14.0							
Sun 3 rd		29.672	47.8										10		4.8 +10.0						overcast.	
	8-6	29.664	44.5	15.0	18.9	15.0		SSE	395	987	004		10	AS.	8.33 17.0					15.0 15.1 14.7	th. thin, overcast; sun visible	
		29.632	47.2										10	AS	11.54 15.5							
		29.686	52.8										10	AS CoS	16.3 15.5							
		29.658	53.0										10	AS CoS	20.10 19.0							
		29.626	46.8										1	AS	23.52 14.2						Cloud caps on Erubus	
	4	29.656	47.2										3	C.	4.1 +19.3						ST over W. mounds.	

BRITISH ANTARCTIC

EXPEDITION, 1910.

Month of

191

Meteorological

Register kept at

Day	Hour	Barometer	Attd. Ther.	THERMOMETERS				WIND		ANEMOMETER		Weather	CLOUDS		CLOUDS		Rain or Snow	Hours Sunshine	AURORA				REMARKS	Initials of Observer
				Dry Bulb	Max.	Spirit Min.	Solar Radn.	Terr. Radn.	Direction True	Force	Miles Read		3 Min. Later	Amount	Kind	Upper			Lower	Erebus Smoke	N	E		
Dec		No.	No.	No.	No.	No.	No.	No.																
Mon 4	8-7	29.768	482	8-34 10.6	18.0	9.5			SSE	424	860	913	8	AS AG		AG			8-51				10.4	
		29.896	480										*	10					12.2				10.4	10.0
																			12.5					
		29.950	485											10	AS				14.5					
		29.952	500											3	AG AS		(10h) S		16.3					
Tues 5 th	8-5	29.874	47.0										1	GS				13.8						
		29.746	480															12.0						
																		0.2						
		29.604	47.0	8-21 17.0	18.0	-			SSE	483	667	715	7	AG AS		AG			+13.7				17.7	AC radiant SW.
		29.454	488										8	AS AS		N70E AS		8.40				17.5	17.0	
	24	29.304	520										10					12.5						
		29.162	510										*	10				25.0						
		29.096	47.2										†	10				16.5						
		29.066	48.8										†	10				23.0						
																			20.2					

BRITISH ANTARCTIC

EXPEDITION, 1910.

Month of

191

Meteorological

Register kept at

Day	Hour	Barometer	Attd. Ther.	THERMOMETERS				WIND		ANEMOMETER		Weather	CLOUDS		CLOUDS		Rain or Snow	Hours Sunshine	AURORA				REMARKS	Initials of Observer	
				Dry Bulb	Max.	Spirit Min.	Solar Radn.	Terr. Radn.	Direction True	Force	Miles Read		3 Min. Later	Amount	Kind	Upper			Lower	Erebus Smoke	N	E			S
Dec		No.	No.	No.	No.	No.	No.	No.																	
Wed 6 th	8-12	29.118	49.0	25.6	25.7	15.8			SE	552944	172	± *	10					9-02					Heavy drift snow.		
	12	29.184	48.6							(12-10) 568000		± *	10					25.8					Less drift & snow but still		
		29.218	48.0									± *	10					12.5					Heavy		
		29.322	47.8									*	10					25.8					more heavier but less drift.		
		29.376	48.8									*	10					15.53					No drift but heavy fall of snow in		
																		27.0					large flakes of stars.		
																		18.5					Heavy full clearing.		
																		22.5							
																		24.15							
																		22.0							
Thurs 7 th	8-7	29.372	45.8	18.3	26.3	18.5			NNW.	602791	926	± *	10					9-7					Thick drift & frost, some snow. Heaviest fall of		
		29.446	45.2										9					21.0					snow since on arrival, between 15 & 24 inches lying		
		29.550	46.6										2	S				12.00					dry is clearing in N.		
		29.654	48.8										5	Acu				22.0					Fine bright weather but very heavy dark		
		29.738	48.0										8	Acu				16.5					18" to 20" snow lying.		
		29.840	49.8									*	9	MS				23.0							
																		20-1					Little fine snow falling		
																		17.0							
																		23.58							
																		17.8							
																		4.00							
																		25.0							

BRITISH ANTARCTIC

EXPEDITION, 1910.

Month of

191

Meteorological

Register kept at

Dec

Day	Hour	Barometer No.	Attd. Ther. No.	THERMOMETERS				WIND		ANEMOMETER		Weather	CLOUDS		CLOUDS		Rain or Snow	Hours Sunshine	AURORA				REMARKS	Initials of Observer		
				Dry Bulb No.	Max. No.	Spirit Min. No.	Solar Radn. No.	Terr. Radn. No.	Direction True	Force	Miles Read		3 Min. Later	Amount	Kind	Upper			Lower	Erebus Smoke	N	E			S	W
Fri 8 th	8-6	29.930	502	8.25 11.2	23.8	11.4			NNW	627	418	456	1	S			NW		8-47 22.0					11.5 12.0	Heavy bank of stratus in S E.	
		30.014	49.8										0				NW		12.0 27.0							
		30.032	54.0										0				NW		16.5 24.0						Little surface drift	
		30.024	50.2										0				NW		20.5 21.0						Heavy surface drift	
		30.004	46.5										1						24.5 20.3							
Sat 9 th	4	29.972	45.0										4	CS			W		4 21.2							
		29.904	43.3	8.21 22.0	23.3	12.0			N	702	279	499	8	CS	CS		W		8.56 23.0					22.1 22.0	White bed clouds to right of Erebus Heavy surface drift but less than before	
		29.888	47.2										10	AS					12.12 25.0						Part of 22 nd high	
		29.838	43.7										2	CS.	CS				11.15 24.7							
		29.816	51.0										0						20.7 21.0						No much wind on Erebus	
	24	29.750	49.0										0						24.9 19.3							
		29.692	48.8										1	CS			INVIS		4.0 20.0							

EXPEDITION, 1910.

Register kept at

Day	Hour	Barometer No.	Attd. Ther. No.	THERMOMETERS				WIND		ANEMOMETER		Weather	CLOUDS		CLOUDS		Rain or Snow	Hours Sunshine	AURORA				REMARKS	Initials of Observer				
				Dry Bulb No.	Max. No.	Spirit Min. No.	Solar Radn. No.	Terr. Radn. No.	Direction True	Force	Miles Read		3 Min. Later	Amount	Kind	Direction moving from			Upper	Lower	Erebus Smoke	N			E	S	W	
																Upper												Lower
Sunday 10	8-6	29.664	48.0	8.52 22.8	30.3	15.1			NW.	737	622	659.	WN	0		K		8-6.8 30.0					23.0	Little clouds NW				
		29.670	48.6										WN	0		K		11.50 38.0					23.2					
	16	29.698	53.0										WN	0				4.10 135.0										
	20	29.690	56.0										WN	0		mbis		8.15 27.5										
	24	29.647	56.5											0				24.1 21.9										
Mon 11 th		29.528	57.0										WN	0				4.00 29.2										
	8-3	29.528	56.0	8.45 22.0	34.7	20.8			SE	753	529	-	WN	0		K		8.53 24.0					22.3					
		29.544	53.8											0				12.13 24.5					22.4					
		29.534	55.0											0				16.3 32.5										
		29.600	54.8											0			from Vindh	20.5 26.0										
		29.654	54.8											0				23.58 20.5										
		29.684	55.0											8	Ac 5		K	4.2 19.0						Heavy clouds coming from south				

EXPEDITION, 1910.

Month of _____

191

Meteorological

Register kept at

Initial to Day	Hour	Barometer No.	Attd. Ther. No.	THERMOMETERS				WIND		ANEMOMETER		Weather	CLOUDS			Rain or Snow	Hours Sunshine	AURORA				REMARKS	Initials of Observer	
				Dry Bulb No.	Max. No.	Spirit Min. No.	Solar Radn. No.	Terr. Radn. No.	Direction True	Force	Miles Read		3 Min. Later	Amount	Kind			Upper	Lower	Erebus Smoke	N			E
Doc																								
Tues 12 th	8-6	29.706	500	25.8	31.6	18.2				ESE	793 967	098	+	7	AS	AG		8-38				26.0	Little surface drift	
		29.736	56.5										+	8	AS	AG		26.0				25.9	25.5	Little surface drift.
		29.730	58.8										+	9	AS	AG		12.5						Little surface drift.
		29.750	59.2										+	9	AS	AG		30.0						Little surface drift.
	0.50	29.736	54.0											6	AS	AG		16.5						Little surface drift.
Wed 13 th	4	29.694	52.0											8	AS	AG		29.5						
	8-8	29.664	49.3	27.2	30.2	20.0				SE	862 502	622	+	7	CS	SIDE		20.5				26.9		Faint cone round sun during peak, blue peak. Outside peak appears 10° from sun.
		29.670	53.0										+	8	CS	AS		23.8				27.0	26.6	Closed cloud on Erebus, little surface drift.
		29.642	55.2										+	7	CS	AS		12.5						End to cloud.
		29.626	56.0										+	3	CS	AS		26.5						Little surface drift.
	26	29.606	52.8										+	10	CS	AS		16.0						Mod surface drift.
		29.560	51.0										+	9	CS	AS		25.2						Mod surface drift. By day but there are heavy clouds in W & NW.
																		20.7						Mod surface drift. Heavy St to SW.
																		27.0						Clouds are heavier.
																		24.5						
																		23.0						
																		4.0						
																		25.0						

BRITISH ANTARCTIC EXPEDITION, 1910.

Month of

191

Meteorological

Register kept at

191

to

Day	Hour	Barometer	Attd. Ther.	THERMOMETERS				WIND		ANEMOMETER		Weather	CLOUDS		CLOUDS		Rain or Snow	Hours Sunshine	AURORA				REMARKS	Initials of Observer
				Dry Bulb	Max.	Spirit Min.	Solar Radn.	Terr. Radn.	Direction True	Force	Miles Read		3 Min. Later	Amount	Kind	Upper			Lower	Erebus Smoke	N	E		
Dec		No.	No.	No.	No.	No.	No.	No.																
Thurs 14 th	8-6	29.556	50.0	25.7	29.1	20.3			SE	932	806	929	10	AS				8.55				26.12	Clear on southern horizon.	
		29.520	49.3										5	AS				26.2				26.0	25.5	
		29.488	51.0										8	AS				12.5						
		29.454	51.0										8	AS				22.2						
		23.58	29.458	51.5														16.3						
		29.424	68.0										9	AS				27.0						
	8-6	29.444	45.5	23.9	28.3	22.0			SE	995	712	814	10	AS				8.36				24.0	Heavy clouds in S+W. Little snow fully (grains)	
		29.450	51.8										10	AS				25.0				23.3	23.7	Mostly heavy snowfall since 10 hrs in half melted flakes. Wind weak
		29.446	54.5										8	AS				12.5						Snow ceased at 15 hrs
		29.464	54.2										2	AS				26.0						Clouds clearing remaining on Erebus
		29.544	53.5										9	AS				16.7						
		29.614	52.0										5	AS				26.2						
																		20.7						
																		24.2						
																		24.12						
																		23.8						
																		6.0						
																		22.8						

BRITISH ANTARCTIC

EXPEDITION, 1910.

Month of

191

Meteorological

Register kept at

Day	Hour	Barometer No.	Attd. Ther. No.	THERMOMETERS				WIND		ANEMOMETER		Weather	CLOUDS		CLOUDS		Rain or Snow	Hours Sunshine	AURORA				REMARKS	Initials of Observer																																																																																																																																																																																																																																																																																																																																																																																																																																																																																																																																																																																																																																																																																																																																																																																																																																																																																																																																																																																																																																																																																																																																																																																																																																																																																																																																																									
				Dry Bulb No.	Max. No.	Spirit Min. No.	Solar Radn. No.	Terr. Radn. No.	Direction True	Force	Miles Read		3 Min. Later	Amount	Kind	Upper			Lower	Erebus Smoke	N	E			S	W																																																																																																																																																																																																																																																																																																																																																																																																																																																																																																																																																																																																																																																																																																																																																																																																																																																																																																																																																																																																																																																																																																																																																																																																																																																																																																																																																							
Sat 16 th	8-7	29.732	51.0	21.3	28.0	13.4						SE	0.25	0.59	201	⬇	9	S.																																																																																																																																																																																																																																																																																																																																																																																																																																																																																																																																																																																																																																																																																																																																																																																																																																																																																																																																																																																																																																																																																																																																																																																																																																																																																																																																																															

BRITISH ANTARCTIC

EXPEDITION, 1891.

Month of

191

Meteorological

Register kept at

191

to Alaska

Day	Hour	Barometer No.	Attd. Ther. No.	THERMOMETERS				Terr. Radn. No.	WIND		ANEMOMETER		Weather	CLOUDS		Rain or Snow	Hours Sunshine	AURORA				REMARKS	Initials of Observer	
				Dry Bulb No.	Max. No.	Spirit Min. No.	Solar Radn. No.		Direction True	Force	Miles Read	3 Min. Later		Amount	Kind			Upper	Lower	Erebus Smoke	N			E
Dec				8.27																				
Mon Dec 8	9	29.748	53.5	26.5	27.7	17.3			N	092	498	533		9	S Acu			8.48				26.8	Well formed heavy Cu in NW.	
	12	29.752	53.5											8	Acu			12.5				26.8		
	16	29.754	53.0										*	8	Acu		NW	15.50					Little fine snow falling	
	20	29.764	57.0											5	Acu			20.5						
	24	29.786	59.0											0				24.7					Whale backs S of Easton	
Tues 19 th	4			8.26														8.28				25.3	Shy clear in west otherwise heavy	
	8	29.792	56.0	25.0	28.5	20.0			N	116	170	235	*	8	S			12.9				25.2	new cast. Little snow falling	
		29.800	54.6											8	Acu			15.52						
		29.796	56.0											5	Acu		NW	17.0						
		29.772	55.6											2	S			20.5						
		29.746	53.8											1	Acu			24.2						
		29.710	48.6											1	Acu			24.4						

EXPEDITION, 1910.

Month of _____

191

Meteorological

Register kept at

[illegible]

EXPEDITION, 1910.

Month of _____

191

Meteorological

Register kept at

Day	Hour	Barometer No.	Attd. Ther. No.	THERMOMETERS				WIND		ANEMOMETER		Weather	CLOUDS		CLOUDS		Rain or Snow	Hours Sunshine	AURORA				REMARKS	Initials of Observer
				Drv Bulb No.	Max. No.	Spirit Min. No.	Solar Radn. No.	Terr. Radn. No.	Direction True	Force	Miles Read		3 Min. Later	Amount	Kind	Upper			Lower	Erebus Smoke	N	E		
Dec																								
Fri 22	8-5	29.872	480	8-17									7	Alto	Alto		8-32							
	12	29.886	492	13-8	24-4	12-0					SE	252534	604	7	Alto	No mlt.	14-2							
	17	29.892	522										8	Alto	Alto		12-5							
	20	29.896	547										1	S		W	20-0							
	23-50	29.920	49-5										1	S		W	16-52							
	4	No obs															23-2							
Sat 23	7-55	29.910	442	8-18							SSE	295994	097	7	Alto	Alto	8-34							
	12	29.938	502	21-0	23-1	12-6							0			NW	21-0							
	16	29.942	522										1	CS		NW	12-00							
	20	29.956	510										3	CS	NW	NW	21-5							
		29.954	486										4	CS			15-57							
		29.936	442										5	CS		N	23-0							

BRITISH ANTARCTIC

EXPEDITION, 1910.

Month of

191

Meteorological

Register kept at

101

Month of

Day	Hour	Barometer	Attd. Ther.	THERMOMETERS				WIND		ANEMOMETER		Weather	CLOUDS		Rain or Snow	Hours Sunshine	AURORA					REMARKS	Initials of Observer	
				Dry Bulb	Max.	Spirit Min.	Solar Radn.	Terr. Radn.	Direction True	Force	Miles Read		3 Min. Later	Amount			Kind	Upper	Lower	Erebus Smoke	N			E
Dec		No.	No.	No.	No.	No.	No.	No.																
Jan 24 th	8.5	29.928	44.0	25.0	27.0	17.2			Calm	316	138	139	1	S			NE	8.35				25.0	Echo sound for under.	
	11.45	29.944	48.0										0				NE	31.8				25.3	25.0	
		29.944	52.0										0				NE	11.44						
		29.938	52.8										0				E	16.10						
		29.922	51.0										0				E	30.0						
Jan 25 th	4	29.880	46.0										0				E	20.10						
	8.7	29.858	43.0	22.2	28.8	18.1			Calm	325	427	431	0				E	26.0						
		29.872	56.0										0				E	24.3						
	8.30	29.860	52.0										8	C			E	24.8						
	24	29.860	51.8										10	C	N		E	4.2						
		29.842	48.0										10	C			N	25.1						

BRITISH ANTARCTIC EXPEDITION, 1910.

Month of _____

191

Meteorological

Register kept at

[illegible]

EXPEDITION, 1910.

Month of _____

191

Meteorological

Register kept at

[illegible]

BRITISH ANTARCTIC

EXPEDITION, 1910.

Month of

191

Meteorological

Register kept at

Station or Day	Hour	Barometer No.	Attd. Ther. No.	THERMOMETERS				WIND		ANEMOMETER		Weather	CLOUDS		Rain or Snow	Hours Sunshine	AURORA				REMARKS	Initials of Observer				
				Dry Bulb No.	Max. No.	Spirit Min. No.	Solar Radn. No.	Terr. Radn. No.	Direction True	Force	Miles Read		3 Min. Later	Amount			Kind	Upper	Lower	Erebus Smoke			N	E	S	W
Lat 30 th	8.5	29.762	46.0	22.2	30.0	19.0			SSE	395	408	527	*	10			8-33					22.5	Mud snow (decayed crystals)			
		29.786	48.2										+	10			23.2					22.2	22.0	Mud snow & drift		
		29.794	55.7										+	10			12-4									
		29.796	56.0										+	10			24.6									
		29.774	53.8										+				16.0									
Lat 31 st		29.738	50.0										+	8	AS		4.0								By clean Heavy surface drift	
	8.5	29.746	48.2	19.0	23.9	16.9			SE	465	896	092	+	9	AS AC A AC	AC SE AC SE	8.52 20.0 12.4 20.1 16.3 21.0 20.5					19.2 19.0	19.0	Mud surface drift		
		29.746	49.0											8	AC		20.4									
		29.738	49.0											9	AC		16.3									
		29.716	51.0											10	AS S AC		21.0 20.5									
		29.694	49.7											6	AS S AC		20.2									
		29.658	46.0										*	10			14.4 17.0 17.8								Few flecks of fine snow	

EXPEDITION, 1910.

Month of _____

191

Meteorological

Register kept at

1912.

[illegible]

BRITISH ANTARCTIC EXPEDITION, 1910.

Meteorological Register kept at

Month of

191

Day	Hour	Barometer	Attd. Ther.	THERMOMETERS				WIND		ANEMOMETER		Weather	CLOUDS		Direction moving from	Rain or Snow	Hours Sunshine	AURORA				REMARKS	Initials of Observer	
				Dry Bulb	Max.	Spirit Min.	Solar Radn.	Terr. Radn.	Direction True	Force	Miles Read		3 Min. Later	Amount				Kind	N	E	S			W
No.	No.	No.	No.	No.	No.	No.	No.	No.	No.	No.	No.	No.	No.	No.	No.	No.	No.	No.	No.	No.	No.	No.		
Wed 3 rd	87	29.492	492	8-21	20.0	20.1	10.8			SSE	583	028	044	*	10	S		8-36				20.6	Little snow	
		29.462	510											*	9	S	N 30 W	25.2				20.4	20.0	Jan film of snow
		29.424	490												9	S	S	12.3						
		29.410	510												9	S	N 20 W	22.0						
		29.400	482												9	Fr		16.0						
Thurs 4 th	24	29.416	452												5	Fr		24.2						
	85	29.454	460	8-17	25.0	26.0	19.8			SE	573	314	335		8	Fr	N 30 W	8-32				25.0		
		29.492	480												9	S		25.2				24.8	24.2	
		29.514	494												10			12.5						
		29.572	478												8	Fr		18.0						
		29.578	480												2	Fr		16.10						
		29.570	482												2	Fr		32.0						
															8	Fr		20.5						
															2	Fr		27.5						
															2	Fr		24.0						

BRITISH ANTARCTIC EXPEDITION, 1910.

Month of

191

Meteorological

Register kept at

Day	Hour	Barometer	Attd. Ther.	THERMOMETERS				WIND		ANEMOMETER		Weather	CLOUDS		CLOUDS		Rain or Snow	Hours Sunshine	AURORA				REMARKS	Initials of Observer
				Dry Bulb	Max.	Spirit Min.	Solar Radn.	Terr. Radn.	Direction True	Force	Miles Read		3 Min. Later	Amount	Kind	Direction moving from			Erebus Smoke	N	E	S		
Jan.		No.	No.	No.	No.	No.	No.	No.					Upper	Lower										
Fri 5 th	25	29.576	480	8-19 25.8	31.0	22.3			N	583	366	385	1	S		K		8-34 38.0 12.0 37.8 16.5 33.0 20.8 27.0				25.8 25.9 25.5		
		29.580	500										3			W								
		29.576	532										7											
		29.576	527										7	S	W								in red line W & N.	
	24	29.550	50										0					25.5 (1.30 am)					Little S cloud on horizon	
		29.526	460										0			now visible								
	26	29.578	470	8-21 23.5	31.0	15.3			SE	600	337	363	3	7-10	N 50 W higher 7-12	"		8-37 22.8 12.0 24.0 16.10 26.3				23.8 24.2 24.0		
		29.510	522										6	7-10	N 30 W 7-12									
		29.480	530										3	6-9	N 30 W 7-12									23 hr faint, bluish fog with white fog just to horizon
		29.442	542										1	6		now visible			20.5 (1) 28.0	20.30 26.5				
	29.396	52.5																16.5 (28.00)					little streak on horizon	
	29.344	470											0			now visible			19.3					

BRITISH ANTARCTIC EXPEDITION, 1910.

Month of

191

Meteorological

Register kept at

Day	Hour	Barometer	Attd. Ther.	THERMOMETERS				WIND		ANEMOMETER		Weather	CLOUDS		CLOUDS		Rain or Snow	Hours Sunshine	AURORA				REMARKS	Initials of Observer
				Dry Bulb	Max.	Spirit Min.	Solar Radn.	Terr. Radn.	Direction True	Force	Miles Read		3 Min. Later	Amount	Kind	Upper			Lower	Erebus Smoke	N	E		
Jan		No.	No.	No.	No.	No.	No.	No.																
Thurs 11 th	8-4	29.380	49.8	18.3	23.1	13.3			N	712749	768	W	4	S	Alc			8-37					18.2	
		29.364	50.2									W	5	Alc		NSW		24.8					18.9	18.2
		29.300	50.2									W	7	Alc				19-50						
		29.250	51.5									W	9	S				25.0						
		29.186	47.8										1	725	now white			4.0						
Fri 12 th	8-5	29.136	46.7	19.0	24.0	15.0			SE	722 803	847		1	S		K		8-35					19.0	
		29.124	50.8										0			W		12-10					19.1	19.0
		29.096	51.0										0			K		22.0						
		29.068	52.0										0			K		15.50						
		29.050	47.0										0			K		23.8						
		29.020	42.0										0			K		20.5						
													1	Ci		K		24.0						
																		4-5						
																		16.0						

clouds became heavy / As the Alc formed & became
during the afternoon. thick they showed
irid. colors, some
patches of which were 20' away from sun

BRITISH ANTARCTIC EXPEDITION, 1910.

Month of _____

191

Meteorological

Register kept at

Day	Hour	Barometer	Attd. Ther.	THERMOMETERS				WIND		ANEMOMETER		Weather	CLOUDS		Rain or Snow	Hours Sunshine	AURORA				REMARKS	Initials of Observer
				Dry Bulb	Max.	Spirit Min.	Solar Radn.	Terr. Radn.	Direction True	Force	Miles Read		3 Min. Later	Amount			Kind	Upper	Lower	Erebus Smoke		
		No.	No.	No.	No.	No.	No.	No.														
13	8-4	29.048	43.5	8.20												8.35						
		29.104	51.6	19.6	24.4	12.0				740	199	250	0		S	20.3				20.0	19.7	
		29.138	54.3										0		S	12.7						
		29.154	50.1										8	cu		20.8						
		29.176	48.8										8	Al		16.5						
		29.166	45.0										10			18.2				little snow in morning & small flakes		
		29.188	43.2										10			16.6						
		29.240	49.0										10			19.0						
		29.284	51.1										10			18						
		29.330	68.0										10			4.0						
14	8-4	29.188	43.2	8.20									10			16.8						
		29.240	49.0	19.0	22.9	14.0				762	947	991	10			8.40				19.5	19.3	
		29.284	51.1										10			19.3						
		29.330	68.0										9	cu		12.5						
		29.378	49.8										10	cu		20.2						
		29.386	49.0										10	cu		16.5				cloudy heavy snow commenced at 21 hrs		
													9	S		21.0						
													9	S		20.5						
													9	S		20.5						
													9	S		4.00				showing		
													9	S		19.8				Western note clear, alt 1 inch snow lying		

BRITISH ANTARCTIC

EXPEDITION, 1910.

Month of

191

Meteorological

Register kept at

191

Month of

Day	Hour	Barometer	Attd. Ther.	THERMOMETERS				TERR. Radn.	WIND		ANEMOMETER		Weather	CLOUDS		CLOUDS		Rain or Snow	Hours Sunshine	AURORA				REMARKS	Initials of Observer
				Dry Bulb	Max.	Spirit Min.	Solar Radn.		Direction True	Force	Miles Read	3 Min. Later		Amount	Kind	Upper	Lower			Erebus Smoke	N	E	S		
Jan		No.	No.	No.	No.	No.	No.	No.																	
Mon 15 th	8-6	29.414	48.0	23.0	24.8	17.3			SE	79.3	352	366	2	9	cus					2.49				23.2	
		29.432	49.2										2	10						24.2				23.4	23.1
		29.436	54.7										*	10						12.3					
		29.450	58.5											10						24.5					
																				16.5					
																				24.0					
																				20.5					
																				30.0					

BRITISH ANTARCTIC EXPEDITION, 1910.

Month of

191

Meteorological

Register kept at

Day	Hour	Barometer No.	Attd. Ther. No.	THERMOMETERS					WIND		ANEMOMETER		Weather	CLOUDS			Rain or Snow	Hours Sunshine	AURORA				REMARKS	Initials of Observer				
				Dry Bulb No.	Max. No.	Spirit Min. No.	Solar Radn. No.	Terr. Radn. No.	Direction True	Force	Miles Read	3 Min. Later		Amount	Kind	Upper			Lower	Erebus Smoke	N	E			S	W		
Jan Wed 17	8-5	29.370	47.0	8-13 14.2	7-2	18.6			N	816	288	298	1	ci			S	8-40 25.2 11-58 29.0					15.1 15.3 14.5	Fog over middle of Sound.				
		29.364	47.5										2	ci											ci radiar WNW			
		29.360	49.8										3	ci	cc N40E		S	16.10 28.0							ci - - WNW			
		29.376	49.5										8	ci	cc N40W			20.10 19.2							thick seam mixed, mixed with slight breeze above			
		29.366	44.0																									
		29.350	37.8										10						3.58 11.0							Misty.		
	8.5	29.386	38.2	8.24 10.0	29.8	9.6			SE	854	178	342	10	*				8.24 10.5 12.10 12.5 15.58 14.2 20.6 20.3					10.0 9.9 9.8	low (like flour) + drift thick weather, little snow drift Weather clearing				
		29.428	45.0											10	*													
		29.452	45.2											10														
		29.478	48.8											10														
		29.504	46.5											*	10											mod snow, (stars)		

BRITISH ANTARCTIC EXPEDITION, 1910.

Month of

191

Meteorological

Register kept at

Day	Hour	Barometer No.	Attd. Ther. No.	THERMOMETERS				WIND		ANEMOMETER		Weather	CLOUDS		CLOUDS		Rain or Snow	Hours Sunshine	AURORA				REMARKS	Initials of Observer																																																																																																																																																																																																																																																																																																																																																																																																																																																																																																																																																																																																																																																																																																																																																																																																																																																																																																																																																																																																																																																																																																																																																																																																																																																																																																	
				Dry Bulb No.	Max. No.	Spirit Min. No.	Solar Radn. No.	Terr. Radn. No.	Direction True	Force	Miles Read		3 Min. Later	Amount	Kind	Direction moving from			Upper	Lower	Erebus Smoke	N			E	S	W																																																																																																																																																																																																																																																																																																																																																																																																																																																																																																																																																																																																																																																																																																																																																																																																																																																																																																																																																																																																																																																																																																																																																																																																																																																																																														
																Upper												Lower																																																																																																																																																																																																																																																																																																																																																																																																																																																																																																																																																																																																																																																																																																																																																																																																																																																																																																																																																																																																																																																																																																																																																																																																																																																																																													
Fri 19	8-4	29.518	47.0	17.0	20.8	9.4			NNW.	8.97	4.90	5.12	*	10					8-41																																																																																																																																																																																																																																																																																																																																																																																																																																																																																																																																																																																																																																																																																																																																																																																																																																																																																																																																																																																																																																																																																																																																																																																																																																																																																																						

BRITISH ANTARCTIC

EXPEDITION, 1910.

Month of

191

Meteorological

Register kept at

Day	Hour	Barometer No.	Attd. Ther. No.	THERMOMETERS				WIND		ANEMOMETER		Weather	CLOUDS		CLOUDS		Rain or Snow	Hours Sunshine	AURORA				REMARKS	Initials of Observer	
				Dry Bulb No.	Max. No.	Spirit Min. No.	Solar Radn. No.	Terr. Radn. No.	Direction True	Force	Miles Read		3 Min. Later	Amount	Kind	Upper			Lower	Erebus Smoke	N	E			S
Sun 21 st	8	29.346	470	8.20 19.8	28.0	13.1			SSE	941	578	617	5	7.5	7.5	N20W.	K		8.39					19.9	
	12	29.340	492										0			K		23.5 12.5					20.0	19.4	
	16	29.336	530										0			K		25.5 16.4							
	20	29.324	500										0			K		23.5 20.13							
	24	29.346	510										6			W		23.0 22.57							
Mon 22 nd	8	29.452	640	8.30 18.3	26.8	12.1			SE	959	630	774	9	6.5				8.53 17.2					18.5		
		29.530	472										8	6.5				12.00 18.5					18.3	18.1	
	4 P.M.	29.588	29.1										9 1/2					4.00 16.90							
		29.620	64.8										10					20.6 16.2							
	Midn	29.628	45.3										9 1/2					24.9 26.0							

EXPEDITION, 1910.

191

Register kept at

[illegible]

BRITISH ANTARCTIC EXPEDITION, 1910.

Month of

191

Meteorological

Register kept at

191

Month of

Day	Hour	Barometer No.	Attd. Ther. No.	THERMOMETERS				WIND		ANEMOMETER		Weather	CLOUDS		CLOUDS		Rain or Snow	Hours Sunshine	AURORA				REMARKS	Initials of Observer		
				Dry Bulb No.	Max. No.	Spirit Min. No.	Solar Radn. No.	Terr. Radn. No.	Direction True	Force	Miles Read		3 Min. Later	Amount	Kind	Upper			Lower	Erebus Smoke	N	E			S	W
Thurs 25 th	8-5	29.528	46.4	19.7	24.6	17.3			SSE	026	735	757	0		P	W.		8.40						19.8		
		29.536	49.8										0		W			12.1						19.9	19.4	
		29.524	50.8										0		W			19.0								
		29.540	51.2										0		W			11.5								
		29.540	51.2										0		W			21.8								
		29.540	51.2										0		W			20.7								
		29.540	51.2										0		W			20.0								
		29.510	48.8										0		W			21.5								
		29.510	48.8										0		W			16.5								
		29.476	42.1										2	S		S		4.0								
Fri 26 th	8-6	29.478	40.2	23.2	27.0	11.0			SE	048	888	000	5	CS	CS	SE		8.40								
		29.504	45.0										7	AS		SE		12.8								
		29.528	48.4										3	AS		SE		26.5								
		29.528	48.4										3	AS		SE		16.5								
		29.516	50.0										8	AS		SE		34.0								
		29.534	50.5										10	AS		SE		19.53								
		29.534	50.5										10	AS		SE		24.11								
		29.534	50.5										10	AS		SE		33.5								

BRITISH ANTARCTIC EXPEDITION, 1910.

Month of

191

Meteorological

Register kept at

Day	Hour	Barometer No.	Attd. Ther. No.	THERMOMETERS				WIND		ANEMOMETER		Weather	CLOUDS		CLOUDS		Rain or Snow	Hours Sunshine	AURORA				REMARKS	Initials of Observer		
				Dry Bulb No.	Max. No.	Spirit Min. No.	Solar Radn. No.	Terr. Radn. No.	Direction True	Force	Miles Read		3 Min. Later	Amount	Kind	Upper			Lower	Erebus Smoke	N	E			S	W
Lat 27	8-2	29.600	51.1	8.23 51.7	36.7	11.0			SE	12.4	6.51	+	9	AS CS	CS	70E		8-32					31.2	Mod surface drift.		
		29.574	48.2									+	10	AS CS				30.2					31.2	31.5	Heavy surface drift.	
		29.588	48.8									+	8	AS CS	CS	70E		12-10							Mod surface drift.	
		29.574	49.2									+	2	AS CS			none visible	30.0							Mod surface drift.	
		29.544	48.9										7	CS				20.5							Little surface drift.	
		29.506	47.0										2	CS				34.2							Mod surface drift.	
Lat 28	8-5	29.454	50.2	8.24 29.5	39.9	-			N.	20.0	24.0	27.4	0				W. none visible	24.16							Mod surface drift.	
		29.414	51.8										0				W.	37.2							Mod surface drift.	
	4-0	29.454	53.5										0				W.	4.00							Mod surface drift.	
	21-1	29.420	52.8										0				none visible	26.0							Mod surface drift.	
	24	29.420	49.8										0				W.	8-37							Mod surface drift.	
		29.388	43.8										0				W.	41.0							Mod surface drift.	

BRITISH ANTARCTIC EXPEDITION, 1910.

Month of _____

191

Meteorological Register kept at

Register kept at

Day	Hour	Barometer	Attd. Ther.	THERMOMETERS					WIND	ANEMOMETER		Weather	CLOUDS		CLOUDS		Rain or Snow	Hours Sunshine	AURORA				REMARKS	Initials of Observer		
				Dry Bulb	Max.	Spirit Min.	Solar Radn.	Terr. Radn.		Direction True	Force		Miles Read	3 Min. Later	Amount	Kind			Direction moving from	Upper	Lower	Erebus Smoke			N	E
No.	No.	No.	No.	No.	No.	No.	No.	No.	No.	No.	No.	No.	No.	No.	No.	No.	No.	No.	No.	No.	No.	No.	No.			
Mon 29 th	8-00	29.380	42.0	21.5	32.8	19.0			SE	236	583	780	3	ci		W.		8-53					21.5	Whole land to R of Ench		
		29.406	48.0										1	AS				22.2					21.4	21.1	Little S. of E. of Ench	
		29.432	53.0										0			none		16.13							Little S. of E. of Ench	
		29.424	53.6										2	ci		"		24.0							Little S. of E. of Ench	
		29.422	51.2										6	ci		"		20.3							Little S. of E. of Ench	
		29.406	46.2										1	S		W		24.1							Little S. of E. of Ench	
Mon 30 th	8-5	29.398	43.8	25.3	27.9	18.0			SE	243	263	325	2	ci		W		20.8							Little S. of E. of Ench	
		29.420	48.8										1	ci		W		4.0							Little S. of E. of Ench	
	16:00	29.420	52.1										1	ci		W		20.2							Little S. of E. of Ench	
		29.420	53.1										4	ci		W		8.38							Little S. of E. of Ench	
		29.406	51.8										10	AS				27.0							Little S. of E. of Ench	
		29.386	50.0										10	AS				12.7							Little S. of E. of Ench	

BRITISH ANTARCTIC EXPEDITION, 1910.

Month of

191

Meteorological

Register kept at

Day	Hour	Barometer No.	Attd. Ther. No.	THERMOMETERS					WIND		ANEMOMETER		Weather	CLOUDS		CLOUDS		Rain or Snow	Hours Sunshine	AURORA				REMARKS	Initials of Observer	
				Dry Bulb No.	Max. No.	Spirit Min. No.	Solar Radn. No.	Terr. Radn. No.	Direction True	Force	Miles Read	3 Min. Later		Amount	Kind	Upper	Lower			Erebus Smoke	N	E	S			W
Jan 31	8-0	29.388	69.5	8-21										*	8	Cs	Cs		8-38					24.0	Little snow falling	
		29.370	52.0	24.0	27.2	20.1			NW.	325	707	737		*	8	Cs	N40W		27.2					24.0 23.9		
		29.318	57.0												8	Cs	Cs		12.13							
		29.384	60.0												10				32.2							
		29.384	60.0												10				14.18							
	24	29.384	54.5										*	10	ACU ST NW				20.4						Little snow Very hard cloud to NW	
Feb 1	6-45	29.380	52.6										*	10					24.8						Few flakes of snow	
				8-19															21.0							
	8-7	29.376	49.3	21.7	22.9	18.8			SSE		340	683	702		9	S ACU	ACU N40W	W	8-36					22.1		
		29.400	56.2											*	10	Cs			24.2					22.1 21.4	Few flakes of snow	
		29.396	56.0												10				12.5						Few flakes of snow	
		29.376	55.8											*	10				25.0						Thick overcast	
		29.356	55.8												10				16.4							
		29.324	48.0												10	ACU ST			20.0						Few flakes of snow	
																		20.6						Very thick to W and dark to N Clearing to E with whole back on Erebus	Stk	
																		23.8								
																		23.55								
																		19.4								
																		4.04								
																		18.8								

BRITISH ANTARCTIC EXPEDITION, 1910.

Month of

191

Meteorological

Register kept at

Day	Hour	Barometer	Attd. Ther.	THERMOMETERS				WIND		ANEMOMETER		Weather	CLOUDS		CLOUDS		Rain or Snow	Hours Sunshine	AURORA				REMARKS	Initials of Observer		
				Dry Bulb	Max.	Spirit Min.	Solar Radn.	Terr. Radn.	Direction True	Force	Miles Read		3 Min. Later	Amount	Kind	Direction moving from			Erebus Smoke	N	E	S			W	
																Upper										Lower
Feb 2	8.5	29.318	46.1	8.20 26.5	27.3	17.6			SSE	357	671	721	10	Cus	Cus	N 30 W		8.55 21.0				20.7 20.4				
		29.334	49.2										9	Cus	Cus	N 30 W		12.5 26.0								
		29.350	49.0										10	Cus	Cus	N 30 W		16.5 18.8								
		29.358	50.2										10	Cus				19.51 19.5								
	2.40	29.424	51.2										10	Cus				23.57 18.8								
		29.448	46.0	8.29									*	9	Cus				4.05 19.0				Low flake of snow. Slightly clearing to north			
Feb 3	8.20	29.550	45.2	19.2	23.9	17.2			SE	390	800	823	10	Cus				8.38 19.5				19.2 19.0				
		29.566	47.2										9	Cus				12.26 21.2								
		29.630	49.8										4	Cus	Cus	N 20 W		4.4 21.5								
		29.694	52.0										3	S				20.6 20.0								
	3.4	29.721	52.2										10	S				23.58 19.3				Low.				
	4.30	29.746	52.0										8	Cus				4.32 18.0								

BRITISH ANTARCTIC EXPEDITION, 1910.

Month of

191

Meteorological

Register kept at

Day	Hour	Barometer No.	Attd. Ther. No.	THERMOMETERS				WIND		ANEMOMETER		Weather	CLOUDS			Rain or Snow	Hours Sunshine	AURORA				REMARKS	Initials of Observer
				Dry Bulb No.	Max. No.	Spirit Min. No.	Solar Radn. No.	Terr. Radn. No.	Direction True	Force	Miles Read		3 Min. Later	Amount	Kind			Direction moving from	Erebus Smoke	N	E		
Sun 4 th	800	29.746	47.0	8.29												8-44							
		24.750	51.0	21.5	23.2	16.0			SE	4.0	4.6	5.4	*	8	Cus	N to W.	NW	22.8	21.3	21.1		First flk of snow	
														8	Cus			12.5					
																		22.8					
	1625	29.784	53.0											8	Cus			16.27					
Mon 5 th		29.738	50.0											9	Cus			22.0					
		29.700	53.3											6	Cus			8.8					
	4	29.668	49.2	8.30										8	Cus			23.0					
	8-9	29.628	48.8	25.2	27.1	17.3			SE	4.2	9.6	0.03		8	Cus			23.58					
	10	29.642	53.0											3	Cus	N to W.	W	23.9					
		29.686	54.0											8	Cus			4.0					
		29.712	48.0											1	Cus			22.2					
	24	29.766	44.9											10	S			25.2	25.2	25.0		W. red. WNW.	
		29.804	42.0											10	S			12.5					
																		22.0					

EXPEDITION, 1910.

191

Meteorological

Register kept at

Day	Hour	Barometer No.	Attd. Ther. No.	THERMOMETERS				WIND Direction True	Force	ANEMOMETER		Weather	CLOUDS		Direction moving from	Rain or Snow	Hours Sunshine	AURORA				REMARKS	Initials of Observer
				Dry Bulb No.	Max. No.	Spirit Min. No.	Solar Radn. No.			Terr. Radn. No.	Miles Read		3 Min. Later	Amount				Kind	Upper	Lower	Erebus Smoke		
8-9		29.866 035	41.0	16.0	25.2	13.0		SE	481	170	300		9	Cus			8-30					16.4	
		29.912 025	45.0										8	Cus As			17.0					16.0	15.7
		29.892 020	47.0										0				12.3						
		29.884 120	47.0										1	Cus		K	14.0						
		29.856 138	40.2										5	Cus		"	16.0						
		200 obs															22.5						
Wed 7 th	8-6	29.828 022	46.0	14.2	22.3	12.5		Cal	523	524	530		1	Ci		K	8-30					14.2	
	200	29.716 022	46.0										6	Ci Au		"	23.2					15.3	14.7
																	20.5						
																	18.7						

BRITISH ANTARCTIC

EXPEDITION, 1910.

Month of

191

Meteorological

Register kept at

Day	Hour	Barometer No.	Attd. Ther. No.	THERMOMETERS				WIND		ANEMOMETER		Weather	CLOUDS		CLOUDS		Rain or Snow	Hours Sunshine	AURORA				REMARKS	Initials of Observer		
				Dry Bulb No.	Max. No.	Spirit Min. No.	Solar Radn. No.	Terr. Radn. No.	Direction True	Force	Miles Read		3 Min. Later	Amount	Kind	Upper			Lower	Erebus Smoke	N	E			S	W
Thurs 8 th	8-4	29.680 ⁰¹⁴	49.2	21.8	25.6	14.5			S	533	021	040	7	Cus		CS	NW	W	8-31					22.2		
	12	29.654 ⁰²²	46.2										9	Cus					27.8				23.0	22.2	by and to NW	
	16	29											9	Cus					12.8						Heavy clouds in NW	
	20	29.586 ⁰²⁷	44.2										*	10					20.5						Little snow	
	MN																		19.6							
	4																									
	8-4	29.490 ⁰³⁰	45.0	14.8	26.4	12.6			SSE	551	771	812	10						8-33					14.8		
	12	29.484 ⁰³³	41.5										10						15.8				14.8	14.5		
	16												8	Cus					12.10							
	20-10	29.497 ⁰¹⁴	49.0										6	Cus					17.2						The heavy clouds gradually became thinner & higher during afternoon	
																			20.07							
																			21.0							

BRITISH ANTARCTIC

EXPEDITION, 1910.

Month of

191

Meteorological

Register kept at

191

Month of

Day	Hour	Barometer No.	Attd. Ther. No.	THERMOMETERS				WIND		ANEMOMETER		Weather	CLOUDS		CLOUDS			Rain or Snow	Hours Sunshine	AURORA				REMARKS	Initials of Observer			
				Dry Bulb No.	Max. No.	Spirit Min. No.	Solar Radn. No.	Terr. Radn. No.	Direction True	Force	Miles Read		3 Min. Later	Amount	Kind	Upper	Lower			Erebus Smoke	N	E	S			W		
Feb 10 th	8-6	29.466	43.3	21.7	24.0	9.5			Cal.	565	387	374	8	CS														
	12	29.454 ^{0.30}	43.8										10															
	16	29.468 ^{0.27}	52.0										* 10														Little snow.	
	20	29.496 ^{1.06}	58.0										10															
		-0.10																										
11	8-8	29.552 ^{0.14}	49.4	19.0	26.3	17.0			SSE	602	430	575	* 9	AS														
		29.562 ^{0.17}	47.8										10	AS														
		29.598 ^{0.17}	48.0										9	AS														
		29.600 ^{0.12}	50.2										4	AS														
	24	29.581 ^{0.25}	44.8										1	AS														
		29.576 ^{0.27}	44.0										7	AS														

BRITISH ANTARCTIC

EXPEDITION, 1910.

Month of

191

Meteorological

Register kept at

Day	Hour	Barometer No.	Attd. Ther. No.	THERMOMETERS				WIND		ANEMOMETER		Weather	CLOUDS		Rain or Snow	Hours Sunshine	AURORA				REMARKS	Initials of Observer			
				Dry Bulb No.	Max. No.	Spirit Min. No.	Solar Radn. No.	Terr. Radn. No.	Direction True	Force	Miles Read		3 Min. Later	Amount			Kind	Upper	Lower	Erebus Smoke			N	E	S
Mon 12 th	8-5	29.558 0.25	457	8.27 13.4	19.3	5.0			SSE	66	454	478	9	S			8-47 14.5					13-8 13-7 13-5	Very clear and sunny		
		29.548 0.27	438										6	AG		W	12.3 19.0								
	11-20	29.536 0.22	458										3	CS		W									
		29.600 0.17	432										5	CS	NSW	W	20.5 18.8							Continued snow fall of 1.5 inches	
	8-2	29.676 0.12	502	8.17 19.8	22.8	13.0			SE	67	490	512	1	S			8-32 20.3					19-3 19-7 19-7	Thin clouds showed bright vivid colours.		
													8	AG		NW									
	16.0	29.750 -0.01	530										8	AG		NW	15.53 24.5								
		29.780 -0.04	560										7	CS		W	20.3 22.0								
		29.713 0.06	518										5	CS		W	12.5 24.0								
		29.742 0.25	453									*	9	CS		W	4.0 24.4							Few flakes of snow.	

BRITISH ANTARCTIC

EXPEDITION, 1910.

Month of

191

Meteorological

Register kept at

Day	Hour	Barometer No.	Attd. Ther. No.	THERMOMETERS				WIND		ANEMOMETER		Weather	CLOUDS		Direction moving from	Rain or Snow	Hours Sunshine	AURORA				REMARKS	Initials of Observer		
				Dry Bulb No.	Max. No.	Spirit Min. No.	Solar Radn. No.	Terr. Radn. No.	Direction True	Force	Miles Read		3 Min. Later	Amount				Kind	Upper	Lower	Erebus Smoke			N	E
Fri 16 th	7.58	29.488 051	34.8	8.22 12.0	26.6	?			SE	7.5	6.93	6.80	±	10			8.34 12.8 12.55 13.4					12.0 11.7 12.0	mod surface drift thick overcast haze of 22° hls little surface drift.		
	12	29.538 022	45.7			9.6 14.8							±	10			16.37 12.9 20.10 10.0						slight surf. drift.		
	16.40	29.599 014	48.7										±	10	st.		24.04 10.0 4.03 8.8						do.		
	20.10	29.573 022	45.0										±	10	st.		8.8 8.50 9.0						mod snow & drift		
	24	29.576 033	42.4										±	10	st.		9.0 12.10 9.0 16.09 9.1 20.08 11.1 24.02 11.8 4.00 9.3					9.0 8.6 8.8	mod drift same.		
Sat 17 th	2.7	29.570 049	35.8	8.31 9.0	13.5	7.3			SE	8.5	8.15	0.30	* ±	10									mod. drift		
	12.10	29.597 030	42.8										±	10									mod. drift		
	16.5	29.620 025	45.2										±	10									mod. drift		
	20.10	29.600 017	48.3										±	10									slight surf drift		
	24	29.560 033	42.2											10	st.										
		29.512 041	39.0											9										clear over W mountains	

BRITISH ANTARCTIC

EXPEDITION, 1910.

Month of

191

Meteorological

Register kept at

Day	Hour	Barometer	Attd. Ther.	THERMOMETERS				WIND	ANEMOMETER		Weather	CLOUDS		CLOUDS		Rain or Snow	Hours Sunshine	AURORA				REMARKS	Initials of Observer																																																																																																																																																																																																																																																																																																																																																																																																																																																																																																																																																																																																																																																																																																																																																																																																																																																																																																																																																																																																																																																																																																																																																																																																																																																																																																																																																																						
				Dry Bulb	Max.	Spirit Min.	Solar Radn.		Terr. Radn.	Direction True		Force	Miles Read	3 Min. Later	Amount			Kind	Upper	Lower	Erebus Smoke			N	E	S	W																																																																																																																																																																																																																																																																																																																																																																																																																																																																																																																																																																																																																																																																																																																																																																																																																																																																																																																																																																																																																																																																																																																																																																																																																																																																																																																																																																		
No.	No.	No.	No.	No.	No.	No.	No.	No.	No.	No.	No.	No.	No.	No.	No.	No.	No.	No.	No.	No.	No.	No.																																																																																																																																																																																																																																																																																																																																																																																																																																																																																																																																																																																																																																																																																																																																																																																																																																																																																																																																																																																																																																																																																																																																																																																																																																																																																																																																																																							
	8-4	29.464	37.2	8-19	100	110	70				SSE	922	268	383	9	CS	CS		8-44																																																																																																																																																																																																																																																																																																																																																																																																																																																																																																																																																																																																																																																																																																																																																																																																																																																																																																																																																																																																																																																																																																																																																																																																																																																																																																																																																																										

BRITISH ANTARCTIC EXPEDITION, 1910.

Month of

191

Meteorological

Register kept at

Day	Hour	Barometer No.	Attd. Ther. No.	THERMOMETERS				WIND		ANEMOMETER		Weather	CLOUDS		CLOUDS		Rain or Snow	Hours Sunshine	AURORA				REMARKS	Initials of Observer
				Dry Bulb No.	Max. No.	Spirit Min. No.	Solar Radn. No.	Terr. Radn. No.	Direction True	Force	Miles Read		3 Min. Later	Amount	Kind	Upper			Lower	Erebus Smoke	N	E		
Feb																								
Tues 20 th	8-7	29.300 ^{0.72}	27.0	8.27													8.51						Heavy snow drift	
	12	29.353 ^{0.51}	34.8	1.3	3.5	-1.0			SE	094	153	410	* ↓	10			1.55						Mod. drift - lamour	
	16 1/4	29.360 ^{0.43}	38.4										* ↓	10			12.02						- do -	
	20 1/10	29.386 ^{0.41}	39.1										* ↓	10			16.17						- do -	
													* ↓	10			4.7							
													* ↓	10			20.07							
													* ↓	10			+0.8							
	8-06	29.236 ^{0.70}	18.0	1.2	1.9	?			SE	207	365		* ↓	10			8.55						Mod. snow drift	
	12	29.230 ^{0.57}	33.4			0.0							↓	10			11.58						mod. swift drift	
	16-10	29.222 ^{0.51}	36.3			5.0							↓	10			2.7						mod. Swift drift	
	20	29.255 ^{0.41}	38.8										↓	10			15.46						mod. Swift drift	
	24	29.290 ^{0.41}	39.2										↓	10			3.0						slight	
	24	29.248 ^{0.49}	36.0										↓	7			20.02							
													↓	7			5.0							
													↓	7			23.58							
													↓	7			5.7							
													↓	7			4.2							
													↓	7			5.0							

BRITISH ANTARCTIC EXPEDITION, 1910.

Month of _____

191

Meteorological Register kept at

Day	Hour	Barometer No.	Attd. Ther. No.	THERMOMETERS				WIND		ANEMOMETER		Weather	CLOUDS		Rain or Snow	Hours Sunshine	AURORA				REMARKS	Initials of Observer
				Dry Bulb No.	Max. No.	Spirit Min. No.	Solar Radn. No.	Terr. Radn. No.	Direction True	Force	Miles Read		3 Min. Later	Amount			Kind	Upper	Lower	Erebus Smoke		
Feb																						
Thurs 22 nd	0-5	29.336 049	36.0	72	5.5	1.2				280	280	369	8	Al	N50W		8-65					7.8
	12	29.360 046	37.3										3	As			8-0					7.0
	16	29.399 027	41.0										8	As			11.55					
	20	29.440 043	37.5										7	Al			8-8					
	24	29.458 057	33.3										9	Al			15.55					
	29	470 075	26.2	8.35									7	Ci	K		12-8					
Fri 23 rd	0-13	29.480 078	25.0	6.0	13.2	5.3				SE	342	847	028	9	Ci W.	W	6.5					6.3
		29.540 030	43.14										10	Ci	W.		11.55					
	29	556 020	41.8										9	Ci	W.		6.9					
	29	544 127	43.8										1	Ci	W		13.58					
		29.534 035	41										1	Ci	W		11.0					
Sat 24 th	4AM	29.520 038	40.5										0	O	W		19.57					

BRITISH ANTARCTIC EXPEDITION, 1910.

Month of

191

Meteorological

Register kept at

Day	Hour	Barometer No.	Attd. Ther. No.	THERMOMETERS				WIND		ANEMOMETER		Weather	CLOUDS		CLOUDS		Rain or Snow	Hours Sunshine	AURORA				REMARKS	Initials of Observer																																																																																																																																																																																																																																																																																																																																																																																																																																																																																																																																																																																																																																																																																																																																																																																																																																																																																																																																																																																																																																																																																																																																																																																																																																																																																																																																																																																																																																																																																																																																																																																																																																																																																								
				Dry Bulb No.	Max. No.	Spirit Min. No.	Solar Radn. No.	Terr. Radn. No.	Direction True	Force	Miles Read		3 Min. Later	Amount	Kind	Upper			Lower	Erebus Smoke	N	E			S	W																																																																																																																																																																																																																																																																																																																																																																																																																																																																																																																																																																																																																																																																																																																																																																																																																																																																																																																																																																																																																																																																																																																																																																																																																																																																																																																																																																																																																																																																																																																																																																																																																																																																																						
24	8-00	29.684 641	39.0	8.15 15.2	15.3	1.8			N	384	992	115.		5	cus	cus																																																																																																																																																																																																																																																																																																																																																																																																																																																																																																																																																																																																																																																																																																																																																																																																																																																																																																																																																																																																																																																																																																																																																																																																																																																																																																																																																																																																																																																																																																																																																																																																																																																																																																

BRITISH ANTARCTIC EXPEDITION, 1910.

Month of _____

191

Meteorological

Register kept at

[illegible][illegible]

BRITISH ANTARCTIC EXPEDITION, 1910.

191

Meteorological

Register kept at

BRITISH ANTARCTIC

EXPEDITION, 1910.

Month of

191

Meteorological

Register kept at

191

Month

Date to Day	Hour	Barometer No.	Attd. Ther. No.	THERMOMETERS				WIND		ANEMOMETER		Weather	CLOUDS		CLOUDS		Rain or Snow	Hours Sunshine	AURORA				REMARKS	Initials of Observer
				Dry Bulb No.	Max. No.	Spirit Min. No.	Solar Radn. No.	Terr. Radn. No.	Direction True	Force	Miles Read		3 Min. Later	Amount	Kind	Upper			Lower	Erebus Smoke	N	E		
Mar 29	6	29.086 070	28.1	2.0	15.7	-0.2		SE	814	216	380	↗	10	OK				8.34					Surf. drift slight	
	12	29.088 051	34.8									↗	10	OK				12.41					"	
	1	29.1																14.2						

BRITISH ANTARCTIC EXPEDITION, 1910.

Month of 191

191

Meteorological

Register kept at

BRITISH ANTARCTIC

Month of _____

191

Meteorological

[illegible]

EXPEDITION, 1910.

Register kept at

[illegible]

BRITISH ANTARCTIC

Month of

191

Meteorological

EXPEDITION, 1910.

Register kept at

to Almo M.

BRITISH ANTARCTIC

Month of _____

191

Meteorological

EXPEDITION, 1910.

Register kept at

BRITISH ANTARCTIC EXPEDITION, 1910.

Month of _____

191

Meteorological

Register kept at

BRITISH ANTARCTIC

Month of _____

191

Meteorological

EXPEDITION, 1910.

Register kept at

[illegible][illegible]

BRITISH ANTARCTIC

Month of

191

Meteorological

EXPEDITION, 1910.

Register kept at

BRITISH ANTARCTIC

Month of _____

191

Meteorological

[illegible]

EXPEDITION, 1910.

Register kept at

191

North of

