

27 FEB 1911 — 17. 5. 1911.

B. A. E 17

TO BE LEFT AT CAPE

UNLESS THE FAIR NOTE
LOST.

124 121
Meteorological Record.
Rough Notes

Cape Adare.

Feb 27th 1911.

to

May 17th 1911. inclusive

W. M. M. M.



B Blue Sky
C Clouds (detached)
D Drizzling Rain
F Foggy
G Gloomy
H Hail
L Lightning
M Misty

Beautiful notation

P. Passing showers

Q Squally

R Rain

S Snow

T Thunder

V Visibility

March 1st.
Aluminium sliding sling
spirit thermometer for dry No 57.
Bulb which is missing

Two series of dry bulb temperature
will be taken M (minimum)
S (sliding)

— Bar argument signification

O Overcast
C.O.G. = Overcast - 9 individual clouds
indistinguishable
clouds detached clouds

Feb 21st Maximum MO 3437
Minimum MO 3444

All bearings true

March 1st.

Minimum used for Terrestrial
Radiation MO 3456
M = minimum
P = present

CiS - Cirrostratus

Cu Cumulus

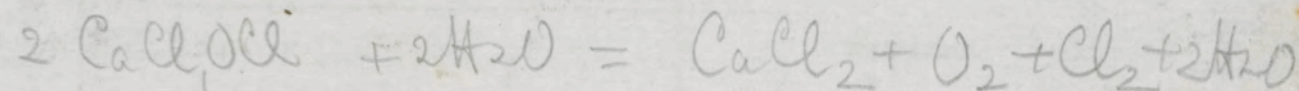
Ci Cirrus

St Stratus

Ci Cu Cirrocumulus

FC Fracumulus

March 1st
Solar radiation thermometer
number MQ 1004



* Original
Lover

BRITISH ANTARCTIC

EXPEDITION, 1910.

Month of February 1911

Meteorological

Register kept at Cape Cedars.

Day	Hour	Barometer No.	Attd. Ther. No.	THERMOMETERS				Direction True	Force	ANEMOMETER		Weather	Amount	Kind	CLOUDS		Rain or Snow	Hours Sunshine	AURORA				REMARKS	Initials of Observer	
				Dry Bulb No.	Max. No.	Spirit Min. No.	Solar Radn. No.			Terr. Radn. No.	Miles Read				5 Min. Later	Upper			Lower	Direction moving from	Erebus Smoke	N			E
Monday 27 th	12 noon	—	—	24.4	20.4	—	—	ESE	3	—	—	B.C.	4	Cumulus	—	ESE	—	SSy	—	—	—	—	Meteorological Station	R.P.	
—	4 pm	—	—	24*	28.8	22.8	—	N	1/2	36.00	36.06	B	1	CS	W	—	Ch	+	—	—	—	—	Cumulus on Cleared	R.P.	
—	8 pm	—	—	22.4	28.3	22.4	—	ESE	—	36.00	36.07	B.C.	5	Cs	—	NW	Ch	+	—	—	—	—	Thunder NW	R.P.	
Tuesday 28 th	9 am	—	—	24.4	27.6	19.0	—	—	—	67.63	67.63	Og	7	NCs	NW	NW	Ch	+	—	—	—	—	7 am S. clouds	R.P.	
—	12 noon	—	—	24.6	25.9	23.4	—	ESE	—	71.37	71.58	Og	8	N	—	NW	Ch	+	0	—	—	—	—	—	R.P.
—	4 pm	—	—	25.2	27.8	24.5	—	ESE	—	77.97	78.21	Og	9	N+S	—	NW	Ch	0	0	—	—	—	—	—	R.P.
—	6 pm	—	—	24.8	26.8	24.0	—	ESE	360	80.90	81.82	Og	9	N+S	—	NW	Ch	0	0	—	—	—	—	T. SE wind 3/4 x 1/2	R.P.
—	8 pm	—	—	24.0	26.1	23.8	—	NW	260	92.54	92.89	Og	9	N	—	NW	Ch	+	0	—	—	—	—	—	R.P.
—	10 pm	—	—	25.0	25.6	23.3	—	ESE	162	102.04	102.47	Og	9	N+S	—	NW	Ch	+	0	—	—	—	—	—	R.P.
Wednesday 29 th	8 am	—	—	23.2	26.1	20.5	—	ESE	1	138.70	139.04	B	1/2	Alto	—	NNW	Ch	+	—	—	—	—	—	—	R.P.
—	10 am	—	—	28.2	29.1	23.8	—	ESE	1/2	143.39	143.92	B	1/2	Alto	ESE	ESE	Ch	+	2	—	—	—	—	—	R.P.
—	12 noon	—	—	27.1	31.2	26.9	—	ESE	1/2	149.02	149.30	C	8	Alto	—	WNW	Ch	+	—	—	—	—	—	—	R.P.
—	2 pm	5 - 133.8	—	26.8	30.2	26.8	72.4	Southerly	1/2	153.32	153.52	Og	9	Alto	—	WNW	Ch	+	0	—	—	—	—	—	R.P.

BRITISH ANTARCTIC

EXPEDITION, 1910.

Month of

March

1911

Meteorological

Register kept at

Cape Adare

1911

March

to April

Day	Hour	Barometer No.	Attd. Ther. No.	THERMOMETERS					WIND Direction True	Force	ANEMOMETER		Weather	CLOUDS		CLOUDS Direction moving from			Rain or Snow	Hours Sunshine	AURORA				Time of Day	Remarks	Initials of Observer	
				Dry Bulb No.	Max. No.	Spirit Min. No.	Solar Radn. No.	Terr. Radn. No.			Miles Read	3 Min. Later		Amount	Kind	Upper	Lower	N			E	S	W					
Wednesday 1st	4pm	—	—	27.8M	28.9	26.5	72.5	23.5	Calm	0	155.89	155.89	Og	8	Cu	—	N	Ch	0	0	—	—	—	—	—	Situation practically unchanged	RSP	
—	630pm	—	—	27.1M	29.8	26.6	72.4	27.0M	ESE	1/2	161.23	161.69	Og	9	Cu	—	N	Ch	0	1/4	—	—	—	—	—	No change	RSP	
—	8pm	—	—	28.1M	28.1	26.6	72.4	27.0M	ESE	1/2	166.48	166.71	Og	9	Cu	—	N	Ch	0	0	—	—	—	—	—	Clouds slightly heavier	RSP	
—	10pm	—	—	26.6M	28.0	26.4	72.4	26.4M	Calm	0	172.83	172.83	Og	9	CuNi	—	N	Ch	Snow	0	—	—	—	—	—	Clouds denser, snow commencing	RSP	
Thursday 2nd	6am	—	—	26.4M	28.2	24.4	72.4	24.6M	ESE	3/5	270.77	273.0M	Og	9	CuNi	—	—	Ch	Snow	0	—	—	—	—	—	—	Snow falling & drift flying	RSP
—	10am	—	—	29.3M	28.6	26.0	72.4	24.5M	ESE	4/5	320.47	325.40	Og	7	CuS	N	ESE	Ch	Snow	0	1/2	—	—	—	—	—	Sky clear & somewhat disturbed	RSP
—	12 noon	—	—	29.2M	29.4	27.4	72.4	28.0M	ESE	3/4	362.81	367.94	B6C3	3	CuS	—	N	Ch	0	1 1/2	—	—	—	—	—	Sky still clearing. Scattered CuS.	RSP	
—	2pm	—	—	29.2M	30.5	27.4	77.8	28.2M	ESE	3	403.3	406.5	B5C4	4	ECu	—	N	Ch	0	1	—	—	—	—	—	Shalish N. cumulus & fleeciness	RSP	
—	4pm	—	—	29.6M	30.4	27.8	77.9	29.0M	ESE	0-3	424.49	425.47	B3C6	6	CuS	—	S	Ch	0	3/4	—	—	—	—	—	Clouds are now moving northward	RSP	
—	620pm	—	—	27.0M	30.1	25.9	77.9	26.4M	ESE	4	471.06	474.15	B1C8	8	CuS	—	S	Ch	0	0	—	—	—	—	—	Sky more overcast & wind stronger	RSP	
—	8pm	—	—	27.1M	27.8	25.5	77.9	26.0M	ESE	4	513.66	516.11	Cg	9	CuNi	—	S	Ch	0	0	—	—	—	—	—	Sky completely overcast & wind slightly increased	RSP	
—	10pm	—	—	28.0M	27.5	25.5	77.9	26.5M	ESE	4	558.56	561.46	Cg	9	CuNi	—	—	Ch	Slight	0	—	—	—	—	—	Heavy clouds movement & increased	RSP	
22 - 61 0.5				26.5M	27.5	25.5	77.9	26.5M	ESE	4	558.56	561.46	Cg	9	CuNi	—	—	Ch	Slight	0	—	—	—	—	—	—	Clouds partially obscured by snow	RSP

BRITISH ANTARCTIC

EXPEDITION, 1910.

Month of *March* 1911

Meteorological

Register kept at *C Adare*

Day	Hour	Barometer No.	Attd. Ther. No.	THERMOMETERS				Terr. Radn. No.	WIND		ANEMOMETER		Weather	CLOUDS		CLOUDS		Rain or Snow	Hours Sunshine	AURORA				REMARKS	Initials of Observer		
				Dry Bulb No.	Max. No.	Spirit Min. No.	Solar Radn. No.		Direction True	Force	Miles Read	Min. Later No.		Amount	Kind	Upper	Lower			moving from	Direction	N	E			S	W
Friday March 3 ¹⁵	8 ¹⁵ am	—	—	25.85	—	—	—	24.8 M	ESE	4.5	776.98	760.93	Og	9	Msc4	—	—	Gls	0	—	—	—	—	32.20	8.15 / looked the thermometer	RWP	
—	10 ¹⁵ am	—	—	24.8 M	27.8	24.4	77.8	25.6 P	ESE	5	842.06	846.41	B2C7	7	N. C. 2	—	SE	Gls	0	3/4	—	—	—	—	24.60	Wind increasing & snow commencing	RWP
—	12 noon	—	—	25.0 M	29.0	24.5	85.2	29.1 P	ESE	5	895.04	895.06	B4C5	5	N. C. 2	W	SE	Gls	0	1 1/4	—	—	—	—	32.10	Wind steady. No to with. Slt with	RWP
—	2 pm	—	—	26.15	29.0	26.6	85.2	28.2 P	ESE	5	959.64	964.92	B3C6	6	N. C. 4	—	NE	Gls	0	1	—	—	—	—	25.20	Wind steady. Sky clearing. No to with	RWP
—	4 pm	—	—	27.85	28.9	26.2	90.5	28.6 P	ESE	5	1033.05	1038.60	B3C6	6	N. C. 4	SE	S	1/2 Gls	0	1/2	—	—	—	—	19.40	Wind a little stronger.	RWP
—	6 pm	—	—	27.05	29.1	26.6	90.5	27.0 P	ESE	7	1096.16	1102.50	B3C6	6	N. C. 4	—	—	1/4 Gls	0	1/4	—	—	—	—	13.10	Wind stronger. Two distinct snow clouds	RWP
—	8 pm	—	—	26.15	27.9	25.9	—	26.5 P	ESE	6	1156.93	1161.39	C9	9	C. 1	—	S	1/2 Gls	0	0	—	—	—	—	23.00	Attestatus radiant / faint ESE	RWP
—	10 pm	—	—	27.65	27.8	24.8	—	25.5 P	ESE	6	1167.81	1188.31	C9	9	C. 1	—	—	Ch	0	0	—	—	—	—	20.30	Clouds much heavier. Wind steady	RWP
Saturday	7 am	—	—	24.15	27.9	22.2	84.8	21.8 P	S. 1/2 E	1-0	1213.70	—	B8C1	1	C. 1	—	—	Ch	0	2	—	—	—	—	19.10	Wind decreased markedly	RWP
—	10 am	—	—	25.5 M	33.4	25.2	93.3	26.9 P	S. 1/2 E	1-0	1216.73	1216.95	B2C7	7	C. 1	—	—	Ch	0	1 1/2	—	—	—	—	47.50	Low cumulus on N & S horizons	RWP
—	12 noon	—	—	25.4 M	28.2	25.4	93.3	26.8 M	NNW	1-2	1219.58	—	B1C8	8	C. 1	—	N	Ch	0	0	—	—	—	—	56.30	Attestatus radiant. No snow yet	RWP
—	2 pm	—	—	25.3 M	29.3	25.2	93.3	28.1 M	NNW	1	1220.94	1221.30	B2C7	7	C. 1	SE	W. 1/2 M	0	0	—	—	—	—	55.40	Number coming from N. horizon	RWP	
24-641.8				25.3 M	—	—	—	—	—	—	—	—	—	—	—	—	—	—	—	—	—	—	—	—	42.10	Clouds dispersing	RWP

BRITISH ANTARCTIC

EXPEDITION, 1910.

Month of *March*

191

Meteorological

Register kept at

Day	Hour	Barometer No.	Attd. Ther. No.	THERMOMETERS				WIND		ANEMOMETER		Weather	CLOUDS		CLOUDS Direction moving from			Rain or Snow	Hours Sunshine	AURORA				REMARKS	Initials of Observer		
				Dry Bulb No.	Max. No.	Spirit Min. No.	Solar Radn. No.	Terr. Radn. No.	Direction True	Force	Miles Read		3 Min. Later	Amount	Kind	Upper	Lower			Erebus Smoke	N	E	S			W	
Saturday	Madey	4pm	—	26.9 ^{SE}	30.8	25.5	100.5	26.2 ^P	ESE	1-2	1231.32	1232.07	B1C8	8	SW	Ch.	0	1/2	—	—	—	—	45.0	0	Air felt unusually damp.	RWP	
—	—	6pm	—	25.8 ^M	27.7	23.8	100.5	27.9 ^M	NE	3-0	1239.57	1239.64	Cg.	9	SW	Obs.	Snow	0	0	—	—	—	—	35.0	0	Heavy stratus trending NWSE	RWP
—	—	8pm	—	25.6 ^{SE}	26.6	23.6	68.0	24.2 ^M	W	1	1248.78	—	Cg	9	SW	Obs.	Snow	0	0	—	—	—	—	39.10	0	Nimbus moving from NE fast	RWP
—	—	10pm	—	23.0 ^{SE}	25.4	22.0	68.0	22.8 ^M	ESE	5-2	1269.94	—	Cg	9	SW	Obs.	Snow	0	0	—	—	—	—	—	0	Wind coming from NE to SE at 6 W	RWP
Sunday	8am	—	—	21.5 ^{SE}	23.2	18.8	68.0	21.3 ^P	ESE	3	1490.55	1492.60	B1C8	8	SW	Ch.	0	0	—	—	—	—	47.00	0	—	RWP	
—	10am	—	—	21.8 ^{SE}	22.1	20.0	68.0	21.3 ^M	ESE	2	1505.53	1507.77	B2C7	7	SW	Ch.	0	0	—	—	—	—	27.50	0	Wind fairly steady & less strong	RWP	
—	12pm	—	—	23.8 ^{SE}	23.3	20.6	72.8	23.0 ^P	ESE	2	1519.01	1519.76	B4C5	5	SW	Ch.	0	1/4	—	—	—	—	13.30	0	Wind still dropping & clearing	RWP	
—	2pm	—	—	24.8 ^{SE}	24.9	21.6	97.0	23.8 ^P	ESE	2-1	1530.73	1531.72	B8C1	1	SW	Ch.	0	2	—	—	—	—	6.30	0	Stratus low on horizon	RWP	
—	4pm	—	—	26.0 ^{SE}	—	—	—	26.1 ^P	ESE	—	1542.16	—	—	—	—	—	—	—	—	—	—	—	—	14.40	0	Away on Cape Cedars	RWP
—	6pm	—	—	23.4 ^{SE}	26.1	22.2	97.0	23.2 ^M	ESE	1	1553.64	—	B6C3	3	SW	NE	Ch.	0	2	—	—	—	—	16.10	0	Heavy stratus to ESE & S	RWP
—	8pm	—	—	21.2 ^{SE}	24.8	21.0	97.0	22.0 ^M	ESE	1-2	1562.73	1563.60	Cg	9	SW	Obs.	0	1/2	—	—	—	—	11.10	0	Nimbus & falling snow to S	RWP	
—	10pm	—	—	26.5 ^M	27.8	26.0	97.0	21.6 ^P	ESE	2-4	1569.20	—	B2C7	7	SW	ESE	Obs.	0	0	—	—	—	—	—	0	Clouds dispersing.	RWP
23 - 54 5.4																											

645

March

191 |

Meteorological

Register kept at C Adame

Day	Hour	Barometer No.	Attd. Ther. No.	THERMOMETERS					WIND		ANEMOMETER		Weather	CLOUDS		CLOUDS Direction moving from			Rain or Snow	Hours Sunshine	AURORA				Time	REMARKS	Initials of Observer	
				Dry Bulb No.	Max. No.	Spirit Min. No.	Solar Radn. No.	Terr. Radn. No.	Direction True	Force	Miles Read	3 Min. Later		Amount	Kind	Upper	Lower	Etesus Smoke			N	E	S	W				
Monday	8:20	—	—	23.05	23.1	48.5	18.1M	22.2P	ESE	3-1	1711.47	1712.36	B4C5	5	AS1	ESE	NW	Ch	0	1	—	—	—	—	26.10	0	Nb low down North. 95° SE	BP
—	10 am	—	—	24.28	23.8	21.9	79.8	23.1P	ESE	2	1722.31	1723.22	B6C3	3	AS1	W	—	Ch	0	2	—	—	—	—	58.20	0	Thm haze of snow beneath	BP
—	12 pm	—	—	24.0M	25.7	22.6	94.0	24.2P	ESE	1	1737.99	—	B7C2	—	AS	S	E	Ch	0	2	—	—	—	—	52.20	0	Nb on horizon to N	BP
—	2 pm	—	—	25.4	26.6	23.5	106.2	27.0P	ESE	2	1749.36	1750.43	B2C8	8	AS	—	—	Ch	0	1 1/2	—	—	—	—	14.00	0	AS to North	BP
—	4 pm	29.04	50	25.0	25.2	23.0	106.5	25.0P	ESE	3-4	1771.42	1772.53	B8C2	2	AS	SE	—	Ch	0	2	—	—	—	—	4.10	0	Sky nearly covered with thin clouds.	BP
—	6 pm	29.106	49	22.2	26.2	21.2	106.5	22.4P	ESE	4-5	1823.45	1826.40	B9C4	1	AS	N	—	Ch	0	2	—	—	—	—	7.50	0	Wind rising, snow SE clouds at 3	BP
—	8 pm	29.086	43.8	21.1	23.1	19.8	106.5	19.6P	ESE	4-5	1842.42	1843.38	B9C4	1	AS	—	—	do	0	1	—	—	—	—	41.30	0	Wind rising steadily.	BP
—	10 pm	29.114	45.5	20.6	21.3	19.0	106.5	19.0P	ESE	4	1933.21	—	B9C4	1	AS	—	NE	do	0	0	—	—	—	—	39.30	0	do	BP
Tuesday	8 am	29.204	51	21.9	22.6	18.5	16.6M	20.9P	ESE	2-0	2127.14	—	B6C4	4	AS	—	NE	Ch	0	1	—	—	—	—	—	0	Aurora NE 45° all to NW	BP
—	10 am	29.238	52	21.5	23.5	20.3	80.15	22.0P	ESE	1	2145.48	2145	B2C4	9 1/2	AS	—	NE	Ch	0	1	—	—	—	—	12.20	0	Cape Cod SE slanted to NW	BP
—	12 pm	29.277	52	20.9	23.5	18.8	92.4	21.7P	ESE	1	2154.09	2154.78	C10	10	AS	—	NE	Ch	0	—	—	—	—	10.20	0	Humilis rapidly increasing	BP	
—	2 pm	29.310	58	23.1	23.0	19.5	92.4	22.1P	ESE	1-2	2164.31	2164.61	C10	10	AS	—	NE	Ch	0	—	—	—	—	9.10	0	Heavy snow falling NW	BP	
																								9.40	0	Heavy snow NW & locally N	BP	
																								7.40	0	Snow granula		

EXPEDITION, 1910.

7th & 8th day Month of March

191 /

Meteorological

Register kept at

CG done

[illegible]

EXPEDITION, 1910.

Month of _____

191

Meteorological

Register kept at

C6dare

Date to Day	Hour	Barometer No.	Attd. Ther. No.	THERMOMETERS					WIND		ANEMOMETER		Weather	CLOUDS		CLOUDS		Rain or Snow	Hours Sunshine	AURORA				REMARKS	Initials of Observer		
				Dry Bulb No.	Max. No.	Spirit Min. No.	Solar Radn. No.	Terr. Radn. No.	Direction True	Force	Miles Read	3 Min. Later		Amount	Kind	Upper	Lower			Direction moving from	Erebus Smoke	N	E			S	W
Thursday	6am	29.340	52	21.0	23.5	17.5	78.9	19.9	17.3M	Calm	1-0	2501.79	B1Cg	9	50%	—	0	Ch	0	0	—	—	—	—	0	Heavy fog to North approach	RW
—	8am	29.336	45	22.9	23.3	19.9	78.9	19.9	22.4M	Southerly	1-0	2502.76	B1Cg	9	50%	—	0	Ch	0	2	—	—	—	—	0	Sun shining through haze of 2	RW
—	10am	29.368	53.8	25.3	25.1	22.4	78.9	20.3	26.0M	Southerly	1-0	2509.11	B1Cg	9	50%	—	0	Ch	0	2	—	—	—	—	0	—	RW
—	noon	29.340	50.8	26.2	26.5	23.5	78.9	26.0	25.0M	Calm	1-0	2510.01	B1Cg	9	50%	—	0	Ch	Salt	2	—	—	—	—	0	No change fog, haze, sun	RW
—	2pm	29.368	63.0	25.4	26.9	22.5	79.0	27.1	24.5M	Southerly	1-0	2512.58	B1Cg	9	50%	—	0	Ch	0	2	—	—	—	—	0	No change	RW
—	4:30pm	29.348	64.0	24.9	26.1	23.6	79.0	25.8	23.6M	Southerly	1-0	2518.21	C10	10	50%	—	0	Ch	Salt	2	—	—	—	—	0	Low stratus in NW	RW
—	6pm	29.332	64.0	24.5	25.3	23.6	79.0	24.0	22.0M	Southerly	1-0	2521.21	C10	10	50%	—	0	Ch	Salt	2	—	—	—	—	0	Still stratus in NW	RW
—	8pm	29.328	66.0	23.0	24.0	22.0	79.0	22.2	22.0M	SE	1-0	2530.30	C10	10	50%	—	0	Gls	S	0	—	—	—	—	0	Observed haze	RW
Friday	6:30am	29.118	52.5	24.4	24.5	21.2	79.6	24.4	23.3	ESE	1	2533.33	O10	10	50%	—	0	Gls	She	0	—	—	—	—	0	Observed haze	RW
—	8am	29.076	56	26.0	25.1	22.1	79.0	26.0	24.9M	N	1-2	—	O10	10	50%	—	0	Gls	She	0	—	—	—	—	0	—	RW
—	10am	29.036	55	26.3	26.2	24.6	79.0	25.4	25.0M	N	1-4	2574.07	O10	10	50%	—	0	Gls	She	0	—	—	—	—	0	—	RW
—	12noon	28.918	53	25.4	26.5	24.4	79.0	25.6	24.2M	ESE	1-4	2584.50	O10	10	50%	—	0	Gls	She	0	—	—	—	—	0	—	RW
				24	57	2.1	23.5																				

BRITISH ANTARCTIC

EXPEDITION, 1910.

15th & 16th

Month of

March

1911

Meteorological

Register kept at

Cape Adare

29.1
05
01
00
29.15421
05
01
002

Initial to Day	Hour	Barometer No.	Attd. Ther. No.	THERMOMETERS					WIND		ANEMOMETER		Weather	CLOUDS		CLOUDS			Rain or Snow	Hours Sunshine	AURORA				Time	REMARKS	Initials of Observer	
				Dry Bulb No.	Max. No.	Spirit Min. No.	Solar Radn. No.	Terr. Radn. No.	Direction True	Force	Miles Read	3 Min. Later		Amount	Kind	Upper	Lower	moving from			Direction	N	E	S				W
Friday 15th	2pm	28.934	58	26.3M				23.4M	ESE	3-5	2611.80	2614.06	010	10	Nb10	-	0	Gls	S	0	-	-	-	-	48.30	low	Snow slightly less but drift starting	RBP
	4pm	28.918	54	27.5	27.5	24.0	78.9	26.2P	ESE	4-5	2651.41	2654.78	010	10	Nb10	-	0	Gls	S	0	-	-	-	-	42.00			RBP
	6pm	28.950	55	26.1	27.6	24.0	78.9	23.5M	ESE	4-5	2697.28	2699	010	10	Nb10	-	0	Gls	S	0	-	-	-	-	45.00			RBP
	8pm	28.976	54	25.4M	26.2	26.9	23.1	23.8M	ESE	4-5	2751.00	2754	010	10	Nb10	-	0	Gls	S	0	-	-	-	-	38.00		Snowy & drifting	RBP
Saturday 16th	8am	29.030	36	27.0	27.0	23.0	78.9	23.8M	ESE	5-8	3531.28	3534.47	010	10	Nb10	-	0	Gls	0	0	-	-	-	-	40.50			RBP
"	10am	29.110	38	22.4M	23.9	26.2	21.0	21.8M	ESE	7-9	3335.23	3335.23	010	10	Nb10	-	0	Gls	0	0	-	-	-	-	34.30		Drifting	RBP
"	12pm	29.102	41.8	22.8M	25.1	26.5	21.5	22.5M	ESE	5-8	3445.97	3450.38	010	10	Nb10	-	0	Gls	0	2	-	-	-	-	18.20		" Sun shining through	RBP
"	2pm	29.106	45.1	22.1M	25.8	24.0	22.0	23.3M	ESE	6-8	3423.53	3428.10	C109	10	Nb9	-	0	Gls	0	2	-	-	-	-	10.50		Less drift because less snow	RBP
"	4pm	29.110	40.8	25.2M	25.3	24.4	21.6	24.2P	ESE	4-7	3477.70	3501.73	C109	10	Nb9	-	0	Gls	0	1 1/2	-	-	-	-	3.41		Same situation	RBP
"	6pm	29.134	45	23.5M	25.4	24.4	22.8	23.8M	ESE	4-7	3565.29	3571.26	G108	10	Nb8	-	SE	Gls	0	0	-	-	-	-	11.30		Definite Cumulonimbus radiant	RBP
"	8pm	29.144	48	23.9M	26.0	24.4	22.0	24.6P	ESE	3-6	3635.72	3638.38	C208	10	Nb8	-	SE	Gls	0	0	-	-	-	-	1.10		Wind dropped a little less drift	RBP
				22.4M	24.0	24.0	22.4	24.8P	ESE	4-6	3729.42		C208	10	Nb8	-	-	Gls	0	0	-	-	-	-	1.20		Wind has been little better	RBP
22 - 544.0																												

22 - 544.0

EXPEDITION, 1910.

Month of _____

191

Meteorological

Register kept at

Day	Hour	Barometer	Attd. Ther.	THERMOMETERS					WIND		ANEMOMETER		Weather	CLOUDS		CLOUDS		Rain or Snow	Hours Sunshine	AURORA					REMARKS	Initials of Observer		
				Dry Bulb	Max.	Spirit Min.	Solar Radn.	Terr. Radn.	Direction True	Force	Miles Read	3 Min. Later		Amount	Kind	Direction moving from	Upper			Lower	Light Smoke	N	E	S			W	
No.	No.	No.	No.	No.	No.	No.	No.	No.	No.	No.	No.	No.	No.	No.	No.	No.	No.	No.	No.	No.	No.	No.	No.	No.				
Sunday	6am	29.068	54.2	24.7	25.3	20.9	78.9	25.7	NW	1-2	4192.55	—	010	10	Nb10	—	0	Obs	S	0	—	—	—	—	2:30	0	Wind rising since 9am	KRS
—	11:50	29.096	48.2	25.4	25.4	22.9	78.9	26.0	NW	1	4197.76	—	010	10	Nb10	—	0	Obs	S	1	—	—	—	—	—	0	No change	KRS
—	2:30	29.108	54.0	25.4	25.4	23.5	78.5	25.1	Calm	0	4199.26	—	010	10	Nb10	—	0	Obs	S	0	—	—	—	—	—	0	Mountains beginning to show	KRS
—	4pm	29.110	55.0	23.9	25.1	22.8	78.9	24.4	Calm	0	4199.63	—	010	10	Nb10	—	0	Obs	S	0	—	—	—	—	—	0	Circles to W.	KRS
—	6pm	29.114	54.0	23.3	24.5	21.7	76.0	23.3	Calm	0	4200.02	—	010	10	Nb10	—	0	Obs	S	0	—	—	—	—	—	0	Snow has been drifting	KRS
—	8pm	29.134	57.5	22.3	23.3	21.2	76.0	22.2	Calm	0	4200.75	—	010	10	Nb10	—	0	Obs	S	0	—	—	—	—	—	0	Snow fallen in places	KRS
—	10pm	29.124	58.0	21.5	22.7	20.1	76.0	22.9	Calm	0	4203.00	—	010	10	Nb10	—	0	Obs	S	0	—	—	—	—	—	0	Heavy Nebulae to North	KRS
Monday	13am	29.092	48.8	20.9	21.3	17.9	76.0	19.8	Calm	0	4228.28	—	010	10	Nb10	—	0	Obs	0	0	—	—	—	—	—	0	Heavy snow to N & W	KRS
"	8am	29.064	44.0	20.5	19.9	18.0	76.0	19.4	SE	1-3	4245.78	4246.73	010	10	Nb10	—	0	1/2 Obs	0	0	—	—	—	—	24.0	Heavy snow to NW	KRS	
"	10am	29.106	52.0	21.6	20.2	15.5	76.0	21.1	SE	1	4263.07	4265.34	010	10	Nb10	—	0	Obs	S	1	—	—	—	—	8.20	Heavy snow to W & NW	KRS	
"	12noon	29.116	56.5	21.3	20.8	19.6	77.5	20.6	W	1	4273.07	4274.35	010	10	Nb10	—	SE	Obs	S	1	—	—	—	—	3.40	Wind changed about 10:15	KRS	
—	2pm	29.130	58.8	21.5	21.9	18.7	77.5	20.6	Nb10	1-2	4283.06	4283.60	010	10	Nb10	—	SE	Obs	S	1 1/2	—	—	—	—	59.60	Wind still swinging slightly	KRS	
		24 - 52		7.6																								

BRITISH ANTARCTIC

EXPEDITION, 1910.

Month of

191

Meteorological

Register kept at

Initial to Day	Hour	Barometer No.	Attd. Ther. No.	THERMOMETERS				WIND Direction & True	Force	ANEMOMETER		Weather	CLOUDS		CLOUDS		Rain or Snow	Hours Sunshine	AURORA				REMARKS	Initials of Observer			
				Dry Bulb No.	Max. No.	Spirit Min. No.	Solar Radn. No.			Terr. Radn. No.	Miles Read		3 Min. Later	Amount	Kind	Upper			Lower	N	E	S			W		
Monday	4pm	29.116	55.8	19.8M 21.1	21.4	19.4	77.4	21.1P	SWW	1	4289.68	B ₂ Cy	7	AS ₁ S ₃ M ₃	-	W	Ch	0	1/2	-	-	-	-	0	Sky clearing Snow NW	RBP	
"	6pm	29.106	55.0	19.2M 20.8	20.8	19.2	77.4	19.6P	Calm	0	4296.99	B ₁ Cy	9	S ₇ C ₂	-	0	Ch	0	1/2	-	-	-	-	0	Cloud to NW cleared	RBP	
"	8pm	29.124	57.5	18.8M 19.9	20.3	18.6	18.7P	18.7P	NW	1	4304.39	B ₁ Cy	9	S ₇ C ₂	-	0	Ch	0	0	-	-	-	-	0	No change	RBP	
Tuesday	6am	29.026	44.5	17.8M 19.1	19.4	10.4	77.4	18.2P	NW	1-2	4319.43	C ₁₀	10	S ₁₀	-	0	Ch	Salt	0	-	-	-	-	0	1/2 inch snow during night	RBP	
"	8am	29.032	45.2	17.8M 18.6	19.1	16.6	77.4	18.8P	SE	1-2	4327.80	C ₁₀	10	S ₁₀ S ₁₀ 10	-	0	Ch	0	0	-	-	-	-	0		RBP	
"	10am	29.026	46.3	18.1M 19.0	19.3	17.6	77.4	18.5M 20.5P	SE	1	4334.03	C ₁₀	10	N ₁₀	-	0	Ch	S	0	-	-	-	-	0	Snow falling heavily	RBP	
"	12noon	28.980	42.0	19.0M 19.6	19.9	17.7	77.4	20.0M 22.2P	Calm	0	4334.18	C ₁₀	10	S ₁₀	-	0	Ch	S	0	-	-	-	-	0		RBP	
"	2pm	28.992	50.2	18.0M 18.8	19.8	17.5	77.4	19.5M	Calm	0	4334.78	C ₁₀	10	CS ₁₀	-	0	Ch	0	0	-	-	-	-	0		RBP	
"	4pm	28.998	51.5	18.2M 19.1	18.9	17.6	77.4	18.7M	ESE	0-4	4347.52	C ₁₀	10	C ₁₀ M ₂	-	0	Ch	0	0	-	-	-	-	0	Wind changes from WSW	RBP	
"	6pm	28.980	49.0	19.6M 19.2	19.0	15.9	77.4	16.1M 19.1P	SE	4	4379.48	4361.12	C ₁₀	10	C ₁₀ M ₂	-	0	Ch	0	0	-	-	-	-	15.40 11.10	Wind steady & drift	RBP
"	8pm	28.976	52.0	14.4M 15.2	18.2	14.4	77.4	15.1M	ESE	5	4421.94	4424.26	C ₁₀	10	C ₁₀	-	0	Ch	0	0	-	-	-	-	2.50 7.00	Wind rising	RBP
Wednesday	1pm	28.868	37.3	14.8M 15.9	17.0	14.0	77.4	15.2M	SWW	1-0	4632.36	C ₁₀	15	N ₁₀	-	0	Ch	S	0	-	-	-	-	0	Snow cleared rather again	RBP	
				24 - 446.4																							

EXPEDITION, 1910.

Month of _____

191

Meteorological

Register kept at

Day	Hour	Barometer No.	Attd. Ther. No.	THERMOMETERS					WIND		ANEMOMETER		Weather	CLOUDS		CLOUDS Direction moving from			Rain or Snow	Hours Sunshine	AURORA				REMARKS	Initials of Observer		
				Dry Bulb No.	Max. No.	Spirit Min. No.	Solar Radn. No.	Terr. Radn. No.	Direction True	Force	Miles. Read	3 Min. Later		Amount	Kind	Upper	Lower	Erebus Smoke			N	E	S	W				
Wednesday	8am	28.844	42.4	15.0M 16.2	16.6	14.5	52.1	15.2M 16.9	Calm	0	4532.94	0.10	10	Nb10	-	0.1	Gls	S	0	-	-	-	-	-	-	0	Clouds snow falling	WHP
-	10am	28.836	54.3	15.7M 16.8	16.8	15.0	52.1	16.5M 17.9	Calm	0	4536.17	0.10	10	Nb10	-	0	Gls	S	0	-	-	-	-	-	-	0	Snow increasing & flaky	WHP
-	12noon	28.800	47.3	16.5M 17.7	17.8	15.4	52.1	17.5M 19.5	S20W	1-0	4534.00	B, Cg	9	Cutbg	-	0	Gls	SSE	0	-	-	-	-	-	-	0	Clouds forming a radiant fan	WHP
-	2pm	28.794	53.0	17.5M 18.9	18.5	16.4	52.8	19.1M 20.3	Calm	0	4534.74	B3Cg	7	Cutbg	-	NW	Ch	0	1/4	-	-	-	-	-	-	0	Clouds breaking up near zenith	WHP
-	4pm	28.776	45.0	16.8M 17.9	18.9	16.8	52.8	18.1M 19.1	Calm	1	4535.87	B1Cg	9	Cutbg	-	NW	Ch	0	0	-	-	-	-	-	-	0	Clouds clearing	WHP
-	6pm	28.870	44.0	16.0M 17.5	18.0	16.0	52.8	16.6M 17.6	SySE	1	4537.30	Cw	10	Cutbg	-	0	Ch	0	0	-	-	-	-	-	-	0	Clouds clearing	WHP
-	8pm	28.888	55.2	17.2M 18.6	17.8	16.0	52.8	17.0M 18.0	SSE	1	4543.13	Cw	10	Cutbg	-	0	Ch	0	0	-	-	-	-	-	-	0	Clouds clearing	WHP
Thursday	6am	28.792	54.0	13.9M 14.6	17.9	12.9	52.8	14.4M 15.4	NW	1	4577.88	OW	10	Nb10	-	0.2	Gls	She	0	-	-	-	-	-	-	0	Clouds closed in again	WHP
-	8am			13.3M 14.6	15.1	13.4	52.8	14.5M 15.8	Calm	0	4579.81	0.10	10	Nb10	-	0	Gls	She	0	-	-	-	-	-	-	0		WHP
-	10am	28.816	48.2	13.8M 15.0	15.3	13.3	52.8	15.2M 16.8	NW	1	4580.61	0.10	10	Nb10	-	0	Gls	She	0	-	-	-	-	-	-	0	Heavy flaky snow	WHP
-	12noon	28.806	46.0	13.9M 15.4	15.6	13.3	52.8	16.6P 15.4	Wang	1/2	4581.54	0.10	10	Nb10	-	0	Gls	She	0	-	-	-	-	-	-	0	Snow falling heavily (2 inches)	WHP
-	2pm	28.916	50.1	13.0M 14.4	15.5	12.5	52.8	15.0M 15.2	NW	1	4582.69	0.10	10	Nb10	-	0	Gls	Salt	0	-	-	-	-	-	-	0	Snow almost ceased	WHP
		24	38	0.2																							Heavy snow NW	

EXPEDITION, 1910.

Month of _____

191

Meteorological

Register kept at

Date to Day	Hour	Barometer No.	Attd. Ther. No.	THERMOMETERS					WIND		ANEMOMETER		Weather	CLOUDS		CLOUDS		Rain or Snow	Hours Sunshine	AURORA				REMARKS	Initials of Observer	
				Dry Bulb No.	Max. No.	Spirit Min. No.	Solar Radn. No.	Terr. Radn. No.	Direction True	Force	Miles Read	3 Min. Later		Amount	Kind	Direction moving from				N	E	S	W			
																Upper	Lower									Upper
Thursday	Apr 28 798	475	14.8	15.6	13.1	52.8	16.2	N 20 W	1	4584	52	0 10	10	N 10	-	0	Obs	S	0	-	-	-	-	0		18/3
"	6 pm 28 844	490	17.5	16.8	15.0	52.8	14.0	SE	3-1	4591	97	0 10	10	Ca N 10	-	0	Obs	0	0	-	-	-	-	0	Light southerly wind.	46/3
"	8 pm 26 798	560	16.9	16.8	14.2	52.8	14.6	N	1	4598	10	0 10	10	Ca N 10	-	0	Obs	0	0	-	-	-	-	0		18/3
Friday 17 th	8 am 28 828	448	14.1	17.6	12.0	52.8	11.3	Calm	0	4660	09	B 5 C 5	5	M 4 S 1	-	SE	Obs	0	2	-	-	-	-	0	Calm. Storm rising from SE	18/3
"	10 am 28 830	472	16.0	17.6	10.5	52.8	19.1	S 20 W	1	4667	09	B 1 C 9	9	M 6 S 1	-	SE	Obs	1/2	2	-	-	-	-	0	Wind swung to ESE after reaching	18/3
"	12 noon 28 746	423	16.6	18.3	15.0	89.9	16.6	ESE	8-4	4728	80	B 6 C 4	4	Ca 1	NW	-	Obs	0	1 1/2	-	-	-	-	0	Wind strong from ESE	18/3
"	2 pm 28 732	435	15.9	16.9	13.9	95.9	15.9	ESE	9-5	4817	58	B 2 C 8	8	Ca 1	NW	SE	Obs	0	2	-	-	-	-	0	Wind stronger. A. S. running ESE	18/3
"	4 pm 28 746	442	17.5	15.4	13.9	95.9	15.5	ESE	7-4	4905	45	B 5 C 5	5	Ca 1	NW	SE	Obs	0	2	-	-	-	-	0	Wind falling; little drift	18/3
"	6 pm 28 918	412	18.8	15.5	15.7	95.9	16.6	ESE	2-1	4969	46	B 6 C 4	4	Ca 1	NE	SE	Obs	0	1 1/2	-	-	-	-	0	Wind dropped	18/3
"	8 pm 28 968	530	18.3	-	17.1	95.9	16.3	ESE	2-1	4989	17	B 1 C 9	9	Ca 1	NW	Obs	0	0	-	-	-	-	0	Sky clearing up from North	18/3	
Saturday 18 th	6 am 29 176	405	12.9	17.1	11.9	95.9	11.9	Calm	0	5025	51	B 1 C 9	9	M 4 S 1	-	0	Obs	Salt	0	-	-	-	-	0	Snow haze over sky.	18/3
"	8 am 29 168	440	13.8	12.5	10.5	95.9	14.9	Calm	0	5025	51	B 3 C 7	7	Ca 1	N	Obs	0	0	-	-	-	-	0	Snow haze heavier up into cumuloform clouds	18/3	
23-361.0																										

BRITISH ANTARCTIC

EXPEDITION, 1910.

Month of

191

Meteorological

Register kept at

Day	Hour	Barometer No.	Attd. Ther. No.	THERMOMETERS				WIND		ANEMOMETER		Weather	CLOUDS		CLOUDS		Rain or Snow	Hours Sunshine	AURORA				REMARKS	Initials of Observer				
				Dry Bulb No.	Max. No.	Spirit Min. No.	Solar Radn. No.	Terr. Radn. No.	Direction True	Force	Miles Read		3 Min. Later	Amount	Kind	Upper			Lower	Direction moving from	N	E			S	W		
Saturday 18	10am	29.188	45.0	14.5M	15.7	12.4	67.0	14.5M	14.1P	N 40E	1	502513	B1Cg	9	NbCs	-	N	Gls	0	1/2	-	-	-	-	0	Numbers banding up to S.	WSP	
-	12pm	29.202	44.2	12.4M	15.9	12.9	67.0	15.6M	15.6P	E	1-2	503429	B1Cg	9	NbCs	-	ANE	Ch	0	1/2	-	-	-	-	0	Clear sky to S.	WSP	
-	2pm	29.210	50.8	14.0M	14.9	12.5	"	15.0M	17.0P	NE	1	504375	B1Cg	9	NbCs	-	0	Ch	Slt	0	-	-	-	-	0	Some squalls to W.	WSP	
-	4pm	29.216	49.0	14.2M	15.0	13.5	"	16.2M	17.6P	Cal	0	504566	B2Sc	8	CuS	-	N	Ch	0	1/4	-	-	-	-	0	Mountains quite clear	WSP	
-	6pm	29.224	51.3	10.5M	15.2	10.5	"	16.4M	17.8P	SE	1	504509	B2Cg	2	CuS	-	0	Ch	0	1 1/2	-	-	-	-	0	Weather cleared very much	WSP	
-	8pm	29.278	55.0	10.2M	11.3	8.2	"	7.6M	9.0P	SE	1-0	505702	Bw	0	-	-	-	Ch	0	0	-	-	-	-	0	Clear & calm	WSP	
-	10pm	29.304	48.2	8.2M	10.1	11.2	7.6	7.8M	8.6P	SE	1-0	506534	Bw	0	-	-	-	Ch	0	0	NE	-	-	-	0	Arch of aurora NE.	WSP	
Sunday 19	6am	29.344	39.4	9.8M	10.6	3.9	8.0	7.5M	7.5P	SE	1	510274	B9Ci	1	CuM	-	-	Ch	0	0	-	-	-	-	0	Weather high & clear	WSP	
-	8am	29.216	48.2	14.8M	17.2	17.0	9.0	16.4M	16.4P	ESE	5-9	512505/4666	C10	10	AS. Cu	-	ESE	Gls	0	0	-	-	-	-	0	Wind rising. Weather clearing	WSP	
-	10am	29.142	36.4	15.2M	17.0	11.7	"	16.8M	17.1P	ESE	7-10	523400	C10	10	NbCu	-	ESE	Gls	0	0	-	-	-	-	0	Wind strongest yet	WSP	
-	12pm	29.114	36.4	15.3M	16.4	16.0	4.1	16.8M	16.8P	ESE	8-11	536235	C10	10	NbCu	-	ESE	Gls	0	0	-	-	-	-	0	Wind rising still	WSP	
-	2pm	29.004	40.0	12.8M	13.8	15.9	12.9	14.7M	14.7P	ESE	10-12	531396	C10	10	NbCu	-	ESE	Gls	0	0	-	-	-	-	0	Wind howled hurricane force	WSP	
			24- 318.7																								Aurora visible between	

EXPEDITION, 1910.

Month of

191

Meteorological

Register kept at

Day	Hour	Barometer	Attd. Ther.	THERMOMETERS				WIND		ANEMOMETER		Weather	CLOUDS		CLOUDS		Rain or Snow	Hours Sunshine	AURORA				REMARKS	Initials of Observer	
				Dry Bulb	Max.	Spirit Min.	Solar Radn.	Terr. Radn.	Direction True	Force	Miles Read		3 Min. Later	Amount	Kind	Direction moving from			N	E	S	W			
																Upper									Lower

Sunday 19 th	4pm	28.910	35	13.6m 14.7	15.7	12.8	67.0	13.6m	ESE	10-12	—	O 10	10	N	—	—	Obs	0	0	—	—	—	—	Wind stronger. Aurora had	RP
"	6pm	28.934	35.2	14.0m 15.9	—	—	"	14.9m 15.5	ESE	8-10	—	O 10	10	N	—	—	Obs	0	0	—	—	—	—	Wind dropped somewhat	RP
"	8pm	28.916	35.0	15.8 16.8	—	—	"	15.8m 16.8	ESE	5-7	—	O 10	10	N	—	—	Obs	0	0	—	—	—	—	Wind dropping	RP
Monday 20 th	6am	28.826	32.9	18.0m 18.9	19.9	—	17.5	19.1	SE	5-6	—	B 5/5	5	SE	—	—	Obs	0	0	—	—	—	—	Wind less but more sea	RP
"	6am	28.836	27.0	19.8 19.5m	—	—	—	15.8m	SE	4	—	B 3/3	7	SE	—	—	Obs	0	0	—	—	—	—	Wind falling rapidly	RP
"	10am	28.836	34.5	20.4 19.5m	20.8	—	—	18.5m 20.0m	SE	6-7	—	B 3/3	3	SE	—	—	Obs	0	0	—	—	—	—	Wind still rising	RP
"	12pm	28.858	33.4	20.3 19.5m	20.9	—	—	19.0m 20.2m	SE	6-8	—	B 3/2	2	SE	—	—	Obs	0	2	—	—	—	—	Wind almost same	RP
"	2pm	28.950	42.0	19.0m 19.8	21.2	—	92.2	20.0m 20.8m	S	5-7	—	B 2/2	2	SE	—	—	Obs	0	2	—	—	—	—	Aurora E & W but no GS NNE	RP
"	4pm	29.004	51.2	19.1m 20.3	21.1	—	92.2	20.8m	S	4-5	—	B 3/3	3	SE	—	—	Obs	0	2	—	—	—	—	Wind dropping	RP
"	6pm	29.050	53.4	16.3m 17.4	21.0	—	92.2	16.9m	ESE	1-3	—	B 3/4	4	SE	—	—	Obs	0	1/2	—	—	—	—	Wind still dropping	RP
"	8pm	29.078	56.0	17.3m 18.4	18.2	15.9	92.2	16.6m 17.2m	SE	1	—	B 2/6	8	SE	—	—	Obs	0	0	—	—	—	—	Wind almost cleared	RP
Tuesday 21 st	6am	29.122	40.0	13.7m 14.5	11.8	13.2	—	11.5m 14.0m	SE	1-2	—	B 2/6	6	SE	—	—	Obs	0	0	—	—	—	—	Wind less but more sea	RP

23 40 11.8

BRITISH ANTARCTIC

Month of _____

191

Meteorological

EXPEDITION, 1910.

Register kept at

Day	Hour	Barometer No.	Attd. Ther. No.	THERMOMETERS					Direction True	Force	ANEMOMETER		Weather	CLOUDS		Rain or Snow	Hours Sunshine	AURORA				REMARKS	Initials of Observer			
				Dry Bulb No.	Max. No.	Spirit Min. No.	Solar Radn. No.	Terr. Radn. No.			Miles Read	3 Min. Later		Amount	Kind			Upper	Lower	N	E			S	W	
Tuesday 21 st	8 AM	29.136	41.6	14.1 M 14.9	15.6	13.4	—	13.3 M 15.1 P.	N 45 E	1	—	B3 C7	7	M7	—	N	Ch	Salt	0	—	—	—	—	0	Specular sun falling	RBW
"	10 AM	29.166	43.2	16.3 M 17.4	17.5	12.5	None	12.4 M 15.2 P.	N 70 E	1-3	—	B8 C2	2	G2	—	N	Ch	0	2	—	—	—	—	0	Currents to N & W	RBW
"	12 MM	29.192	45.0	15.6 M 16.6	17.9	15.0	8.6.0	15.1 M 17.2 P.	N 70 E	1-2	—	B8 C2	2	G2	—	NE	Ch	0	7/4	—	—	—	—	0	(Bar H.D.)	RBW
"	2 PM	29.25	57.0	16.3 M 18.5	20.4	15.1	8.7.8	17.3 M 21.6	N 60 E	1	—	B8 C5	5	G5	—	NE	Ch	0	1 1/4	—	—	—	—	0	(Bar H.D.)	RBW
"	4 PM	29.298	57.0	18.2 M 19.2	20.4	17	—	18.8 M 21.6	N 45 W	1-2	55.6.253	B9 C1	1	S6.1	—	—	Ch	0	2	—	—	—	—	0	Right 31 miles (Bar H.D.)	RBW
"	6 PM	29.338	58.0	18.2 M 19.2	19.8	17.2	—	18.3 M 21.6	S 45 W	2	55.7.339	B9 C1	1	S6.1	—	—	Ch	0	2	—	—	—	—	0	(Bar H.D.)	RBW
"	8 PM	29.372	60.0	16.5 M 17.8	19.8	16.5	—	16.4 M 18.8 P.	S 20 W	1	55.8.08	B9 C1	1	S6.1	—	—	Ch	0	1/2	—	—	—	—	0	Brilliant prismatic sunset	RBW
Wednesday 22 nd	6 AM	29.316	40	15.2 M 18.8	19.2	13.9	—	16.8 M 18.9 P.	S	1	56.0.876	B9 C8	8	S6.1	—	N	Ch	0	0	—	—	—	—	0		RBW
"	8 AM	29.208	46.3	19.2 M 20.3	20.1	16.9	None	17.0 M 19.8 P.	S 10 W	1	56.10.10	B1 C9	9	S6.1	—	N	Ch	0	0	—	—	—	—	0	Sky clearing	RBW
"	10 AM	29.276	49.8	18.5 M 19.5	20.2	16.8	64.8	16.9 M 19.8 P.	Calm	0	56.12.08	B3 C9	9	S6.1	—	0	Ch	0	1	—	—	—	—	0	Clouds disappearing	RBW
"	12 MM	29.234	47.8	23.1 M 23.1	26.0	17.5	96.5	16.9 M 22.5 P.	Calm	0	56.12.67	B4 C6	6	S6.1	—	N	Ch	0	1	—	—	—	—	0	Wind cloud N to S	RBW
"	2 PM	29.184	53.3	21.3 M 22.1	24.0	21.3	—	22.6 M 24.7 P.	N 22 E	1	56.13.36	B1 C9	9	S6.1	—	NE	Ch	0	0	—	—	—	—	0	Sky clouded over	RBW
		24	44	1.6																						

BRITISH ANTARCTIC

EXPEDITION, 1910.

Month of

191

Meteorological

Register kept at

Day	Hour	Barometer	Attd. Ther.	THERMOMETERS				WIND		ANEMOMETER		Weather	CLOUDS		CLOUDS		Rain or Snow	Hours Sunshine	AURORA				REMARKS	Initials of Observer				
				Dry Bulb	Max.	Spirit Min.	Solar Radn.	Terr. Radn.	Direction True	Force	Miles Read		3 Min. Later	Amount	Kind	Upper			Lower	N	E	S			W			
		No.	No.	No.	No.	No.	No.	No.																				
Monday 22 nd	4pm	29.080	57	24.5M	26.5	20.8	-	24.3M	S 90 E	4-7	5656	33 5658	94	B1 Cg	9	4Cus	-	Ch	0	0	-	-	-	-	64.40 60.20 64.30 58.10	(Bar)	RWP	
—	6pm	29.040	54.3	24.3M	27.0	23.3	-	25.7M	S 30 E	2-7	5728	58 5726	68	B2 Cg	9 1/2	4Cus	-	SE Ch	0	0	-	-	-	-	58.10	Wind extremely gusty	RWP	
—	8pm	28.988	54.1	25.0M	25.9	23.6	-	25.5M	ESE	4-6	5798	78	C10	10	4Cus	-	SE Ch	0	0	-	-	-	-	-	-	5.12 PM 5.15 PM		RWP
Thursday 23 rd	7am	28.986	37	22.4M	23.2	21.1	19.0	22.2M	S 45 E	6-8	6101	42	B3 Cy	7	4Cus	NE	Obs	0	0	-	-	-	-	-	5.10		SVB	
—	9am	28.986	49	22.3M	22.4	19.3	-	24.6M	ESE	5-7	6130	49 6131	89	B1 Cg	9	4Cus	-	NE Ch	0	0	-	-	-	-	5.10		RWP	
Friday 24 th	10am	28.932	39.6	23.3M	24.2	24.9	20.8	23.5M	S	3-5	6184	50 6184	86	C10	10	4Cus	-	Ch	0	0	-	-	-	-	5.40	Wind dropping	RWP	
—	12 noon	28.966	48.7	21.9M	23.0	24.9	21.9	24.1M	S	3-5	6207	28	B1 Cg	9	4Cus	N?	Obs	0	0	-	-	-	-	-	-	5.00	Stratus to NW & NE	SVB
—	2pm	28.994	58.2	21.9M	22.8	22.9	20.6	23.4M	S 60 E	2-4	6238	90 6239	88	B1 Cg	9	4Cus	-	Ch	0	0	-	-	-	-	1.10		RWP	
—	4pm	29.006	58.2	21.4M	22.3	23.1	21.4	22.9M	S 60 E	2-3	6264	38	B3 Cy	7	4Cus	NE	Ch	0	0	-	-	-	-	-	-	-	Sky clearing	RWP
—	6pm	29.03	58.0	20.0M	21.2	22.9	20.0	21.9M	S	2-3	6287	74	B3 Cy	7	4Cus	SE	Obs	0	0	-	-	-	-	-	-	-	Light stratus to SW	SVB
—	8pm	29.048	62.3	19.6M	20.8	23.0	19.4	20.2M	ESE	1-3	6312	08	B1 Cg	9	4Cus	-	Ch	0	0	-	-	-	-	-	-	-		RWP
Friday 24 th	6.30 AM	29.086	46.0	17.8	22.0	14.9	-	15.2M	S 45 E	1	6425	99	B4 Cb	6	4Cus	SE	Ch	0	0	-	-	-	-	-	-	-		SVB
				24 - 537.5																								

BRITISH ANTARCTIC EXPEDITION, 1910.

Month of

191

Meteorological

Register kept at

191

to 1910

Day	Hour	Barometer	Attd. Ther.	THERMOMETERS				Solar Radn.	Terr. Radn.	WIND		ANEMOMETER		Weather	CLOUDS		CLOUDS		Rain or Snow	Hours Sunshine	AURORA				REMARKS	Initials of Observer		
				Dry Bulb	Max.	Spirit Min.				Direction True	Force	Miles Read	3 Min. Later		Amount	Kind	Upper	Lower			Erebus Smoke	N	E	S			W	
		No.	No.	No.	No.	No.	No.	No.	No.																			
Friday	8 AM	29.086	48	15.0M 16.1	17.2	14.8		14.5M 15.7		S80E	1	643183	7/3	C3	3	Sh	-	-	Clear	0	0	-	-	-	-	Stratus (Bar)	£9/B	
-	10 AM	29.100	50	18.5M 19.5	19.3	18.5	786	15.0 19.2		Cal	0	643622	B4	C6	6	Sh	-	NE	Ch	0	2	-	-	-	-	0	WAB	
-	12 noon	29.116	54.9	20.3M 21.2	26.6	13.5	92.9	19.0M 23.3		N75W	1	644005	B1	C9	9	Sh	-	-	Clear	0	1 1/4	-	-	-	-	0	£9/B	
-	2 PM	29.118	59.8	20.0M 21.1	23.0	20.0	-	22.8 23.1		Cal	0	644227	B1	C9	9	Sh	-	N	Ch	0	0	-	-	-	-	0	WAB	
-	4 PM	29.126	63.2	19.5M 20.8	21.3	19.2	-	22.5 20.5		B20W	at	644419	B2	C8	8	Sh	-	N	Ch	0	0	-	-	-	-	0	WAB	
-	6 PM	29.122	62.2	19.5M 20.5	20.9	19.5	-	21.6 20.5		S75	air	645008	C10	10	Sh	-	-	Clear	0	0	-	-	-	-	-	0	£9/B	
-	8 PM	29.126	62.4	19.5M 20.0	20.5	18.6	-	19.3M 20.2		Cal		645030	C10	10	Sh	-	-	Ch	0	0	-	-	-	-	-	0	WAB	
Saturday	6 AM	29.086	41.5	15.3M 16.5	20.2	10.0	-	7.0M 14.8		Cal		646049	B1	C9	9	Sh	-	-	Ch	0	0	-	-	-	-	0	WAB	
-	8 AM	29.120	100	15.0M 19.0	18.9	14.7	-	14.8M 16.0		Cal		646050	B1	C9	9	Sh	-	-	Ch	0	0	-	-	-	-	0	Stratus cum nimbus	WAB
-	10 AM	29.128	47.8	21.1M 22.4	21.8	17.4	68.8	17.5M 22.0		Cal		647099	C10	10	Sh	-	-	Ch	0	0	-	-	-	-	-	0	WAB	
-	12 noon	29.112	50.2	22.9M 22.9	23.1	20.3	68.8	21.7M 24.1		N45E	1	647311	C10	10	Sh	-	-	Ch	0	0	-	-	-	-	-	0	£9/B	
-	2 PM	29.152	51.0	21.7M 23.0	23.3	21.7	20.4	23.4M 23.4		N60W	1-0	647602	C10	10	Sh	-	-	Ch	0	0	-	-	-	-	-	0	WAB	
24. 6726																												

24. 4725

BRITISH ANTARCTIC

Month of _____

191

Meteorological

EXPEDITION, 1910.

Register kept at

Day	Hour	Barometer No.	Altd. Ther. No.	THERMOMETERS				WIND		ANEMOMETER		Weather	CLOUDS		CLOUDS Direction moving from			Rain or Snow	Hours Sunshine	AURORA				REMARKS	Initials of Observer	
				Dry Bulb No.	Max. No.	Spirit Min. No.	Solar Radn. No.	Terr. Radn. No.	Direction True	Force	Miles Read		3 Min. Later	Amount	Kind	Upper	Lower			Erebus Smoke	N	E	S			W
Friday	4pm	29.162	53	20.8m	22.8	20.8	-	20.8	Calm	6477.50	C10	10	Sc	-	-	Ch	0	0	-	-	-	-	-	-	-	P.W.
-	6pm	29.178	58.2	20.2m	21.8	19.4	-	21.8	SE 1-2	6482.42	Cw	10	St W	-	-	GS	0	0	-	-	-	-	-	0	South-east wind getting light	R.W.
-	8pm	29.178	59.2	20.6	21.8	19.9	-	20.7	Calm	6499.07	Cw	10	St W	-	-	-	0	0	-	-	-	-	-	0	Calm again	V.R.P.
Sunday	8AM	29.148	45.0	19.5m	21.8	17.0	-	19.4m	N 7 SE Airs	6557.84	C8 B2	8	Cloudy	-	-	ES	0	0	-	-	-	-	-	0	Heavy stratus to S E	L.B.
-	10am	29.132	54.0	19.4m	20.4	17.1	-	17.9m	N 4 SE Airs	6562.49	Cg Bi	9	Cl	-	-	Ch	0	1/4	-	-	-	-	-	0		R.W.
-	2pm	29.100	53.0	20.8m	21.8	19.1	68.8	21.8m	SE 1-3	6579.62	Cg Bi	9	St W	-	-	Ch	0	0	-	-	-	-	-	0	(Bar)	R.W.
-	4PM	29.12	53.9	19.8m	21.0	19.8	-	21.5m	SE 1-2	6601.38	C7 B3	7	St W	-	-	Ch	0	0	-	-	-	-	-	0		L.B.
-	6PM	29.078	49.0	19.8m	20.9	19.3	-	21.0m	S 1-3	6627.87	C9 B1	9	Clear	-	-	Obs	0	0	-	-	-	-	-	0		L.B.
-	8PM	29.074	51.2	20.3m	21.8	19.0	-	20.9m	SE 2-4	6681.12	C7 B3	7	Clear	-	-	-	0	0	-	-	-	-	-	0		L.B.
Monday	6AM	28.99	38.0	20.0m	21.0	22.5	17.2	20.3m	S 3-4	6932.49	C6 B4	6	Clear	-	-	Ch	0	0	-	-	-	-	-	0		L.B.
-	8AM	29.030	45.8	19.8m	21.8	18.8	-	20.5m	SW 2-3	6936.49	B4 C6	6	Clear	-	-	Ch	0	0	-	-	-	-	-	0	Skies clearing	R.W.
-	10AM	29.052	46.9	19.7m	20.8	18.0	-	19.9m	SW 2-3	6959.70	B3 C7	7	Clear	-	-	Ch	0	1	-	-	-	-	-	0	Strong wind varying direction	R.W.
		24	490.2																							

BRITISH ANTARCTIC

EXPEDITION, 1910.

Month of

191

Meteorological

Register kept at

191

to Month

Day	Hour	Barometer	Attd. Ther.	THERMOMETERS				Terr. Radn.	Direction True	Force	ANEMOMETER		Weather	CLOUDS		CLOUDS		Rain or Snow	Hours Sunshine	AURORA				REMARKS	Initials of Observer		
				Dry Bulb	Max.	Spirit Min.	Solar Radn.				Miles Read	3 Min. Later		Amount	Kind	Upper	Lower			Direction moving from	Altitude	N	E			S	W
Monday 27 th	12pm	29.064	49.5	19.0M	20.9	18.8	—	20.9M	SSW	1-2	7005.03	B3Cy	7	SE, N. SW	Ch	0	0	—	—	—	—	0	Three series of clouds (Bar H.D.)	10P			
—	2pm	29.082	51.5	19.4M	21.1	18.9	75.4	21.0M	SSW	1-2	7021.08	B3Cy	7	—	—	Ch	0	0	—	—	—	—	0	Sun shining through cloud haze	10P		
—	4pm	29.092	56.8	19.0M	21.0	19.0	—	20.8M	North by East	—	7033.04	B5Cs	5	—	—	Ch	0	1 1/2	—	—	—	—	0	Three much smaller	10P		
—	6pm	29.120	60.0	14.7M	20.0	14.7	—	13.3M	Calm	—	7038.06	B8C2	2	—	—	Ch	0	1	—	—	—	—	0		10P		
—	8pm	29.130	61.0	11.9M	15.9	11.9	—	10.6M	Calm	—	7038.83	B9C1	1	S1	—	—	Ch	0	0	March N.W. E. N.W.	—	—	—	—	0	Barbours and aurora	10P
Thursday 28 th	8am	29.138	47.0	17.5M	18.3	11.9	57.0	11.6M	North by East	—	7046.43	C1	10	SW	—	—	Ch	0	0	—	—	—	—	0		10P	
—	2pm	29.210	46.2	17.9M	18.9	16.9	57.0	19.2M	North by East	—	7051.77	C1	10	SW	—	—	Ch	0	0	—	—	—	—	0		10P	
—	4pm	29.220	56.5	17.7M	19.1	17.7	—	20.0P	SSW	1	7055.87	C1	10	SW	—	NW	Ch	0	0	—	—	—	—	0		10P	
—	6pm	29.236	54.6	17.0M	18.9	17.0	—	18.9M	SSW	1	7059.70	C10	10	SW	—	—	Ch	0	0	—	—	—	—	0		10P	
—	8pm	29.256	56.6	17.6M	18.3	16.6	—	16.4M	C1	1	7066.89	C1	10	SW	—	—	Ch	0	0	—	—	—	—	0		10P	
Friday 29 th	6am	29.262	43.2	14.9M	14.9	13.9	—	15.0M	North by East	—	7070.91	C1	10	SW	—	—	Ch	0	0	—	—	—	—	0		10P	
—	8am	29.332	57.1	14.5M	16.1	14.3	10.0	16.1M	Calm	—	7070.92	B1C9	9	SE	—	—	Ch	0	0	—	—	—	—	0		10P	
24 413.4																											

24 41 3.4

BRITISH ANTARCTIC

Month of _____

191

Meteorological

EXPEDITION, 1910.

Register kept at

Day	Hour	Barometer	Attd. Ther.	THERMOMETERS				WIND		ANEMOMETER		Weather	CLOUDS		CLOUDS		Rain or Snow	Hours Sunshine	AURORA				REMARKS	Initials of Observer		
				Dry Bulb	Max.	Spirit Min.	Solar Radn.	Terr. Radn.	Direction True	Force	Miles Read		3 Min. Later	Amount	Kind	Upper			Lower	Direction moving from	N	E			S	W
		No.	No.	No.	No.	No.	No.	No.																		
Wednesday 29	6am	29.338	49.2	15.8M 16.8	16.7	14.6	—	170M 18.8P	Calm	7070.96	B3Cg	7	Clear	—	S	Ch	0	0	—	—	—	—	0	Sky clearing.	RWP	
—	12 noon	29.34	46.9	17.2M 18.5	18.8	14.5	51.9	18.5M 22.2P	Calm	7071.01	B1Cg	9	Clear	—	—	Clear	0	0	—	—	—	—	0		SPB	
—	2pm	29.356	54.0	17.4M 18.6	18.9	17.0	—	21.35	Eastly breeze	7072.51	B1Cg	9	Clear	—	S	Ch	0	0	—	—	—	—	0		RWP	
—	4pm	29.368	57.5	17.5M 19.0	19.5	16.0	—	19.0P	E 1-2	7084.29	B1Cg	9	Clear	—	—	Ch	few crystals	0	0	—	—	—	—	0		RWP
—	6pm	29.376	58.8	16.3M 17.2	17.1	14.9	—	17.8M 18.5P	S80E 1	7096.26	C1D	10	Clear	—	—	Ch	few crystals	0	0	—	—	—	—	0		SPB
—	8pm	29.394	61.2	16.5M 17.8	17.7	15.9	—	18.0M 18.9P	SW 1	7102.81	C1D	10	Clear	—	—	Ch	0	0	—	—	—	—	0		RWP	
Thursday 30	6am	29.344	48.4	14.4M 15.4	17.8	14.0	—	15.8M 16.8P	W 1	7151.71	B1Cg	9	Clear	—	—	Ch	0	0	—	—	—	—	0	No change	RWP	
—	10am	29.360	49.2	14.7M 15.8	15.9	13.9	—	15.7M 17.0P	SW 1	7154.00	B1Cg	9	Clear	—	—	Ch	0	0	—	—	—	—	0	Clearing to W.	RWP	
—	12 noon	29.360	52.4	14.4M 15.5	15.9	14.1	—	17.8M 18.9P	N10W 1	7161.61	B2Cg	8	Clear	—	SE	Ch	0	0	—	—	—	—	0	Clearing from W.	RWP	
—	2pm	29.362	61.0	16.1M 17.3	20.4	13.6	—	16.0M 17.7P	SW 1	7165.07	B1Cg	1	Clear	—	—	Ch	0	2	—	—	—	—	0	Clearing from S. & W.	RWP	
—	4pm	29.348	58.9	15.9M 17.1	18.5	13.9	77.8	15.5M 17.7P	N60W 2	7175.88	B3C2	2	Clear	—	—	Ch	0	2	—	—	—	—	0		RWP	
—	6pm	29.330	58.8	11.5M 12.9	15.0	10.0	—	10.5M 12.1P	Calm	7177.71	B6C4	4	Clear	—	—	Clear	0	1/2	—	—	—	—	0	Snow falling to SE Snow sand on Cape Adams	SPB	
		24	379.9																							

BRITISH ANTARCTIC

EXPEDITION, 1910.

Month of

191

Meteorological

Register kept at

Day	Hour	Barometer No.	Attd. Ther. No.	THERMOMETERS				WIND		ANEMOMETER		Weather	CLOUDS		CLOUDS			Rain or Snow	Hours Sunshine	AURORA				REMARKS	Initials of Observer
				Dry Bulb No.	Max. No.	Spirit Min. No.	Solar Radn. No.	Terr. Radn. No.	Direction True	Force	Miles Read		3 Min. Later	Amount	Kind	Upper	Lower			Erebus Smoke	N	E	S		
Monday 30th	29.360	61.0	9.8	12.9	8.9	—	9.0	Calm	7178.62	Bq Ci	1	St	—	—	Ch	0	0	NE to south	—	0	Splendid aurora	RBP			
Tuesday 31st	29.210	43.0	10.4	13.4	7.9	—	7.5	Calm	7192.63	Bq Ci	1	St	—	—	Ch	0	0	—	—	0	6 little aurora in clouds	RBP			
31st	29.208	46.4	10.2	10.5	8.1	—	7.6	SSW 1	7198.36	Bq Ci	1	St	—	—	Ch	0	0	—	—	0	—	RBP			
12th	29.208	46.2	17.0	21.3	9.5	—	8.8	SW 1	7201.85	Bq Ci	1	St	—	—	Ch	0	1	—	—	0	Screen left open since 8	RBP			
12th	29.204	47.8	17.2	26.2	12.8	80.8	12.0	SE 1	7204.76	Bq Ci	1	St	—	—	Ch	0	2	—	—	0	—	SE 13			
12th	29.210	56.0	16.4	20.6	14.9	81.4	16.0	SE 1	7211.76	Bq Ci	1	St	—	—	Ch	0	2	—	—	0	Single stream aurora in south	RBP			
16th	29.192	56.8	15.6	17.9	14.8	—	15.7	SE 1	7216.72	Bq Ci	1	St	—	—	Ch	0	2	—	—	0	—	SE 13			
21st	29.204	56.8	10.2	11.1	10.0	—	8.8	SE 1	7220.06	Bq Ci	1	St	—	—	Ch	0	1 1/2	—	—	0	Cirrus streaks to S & E	SE 13			
Saturday 1st	29.148	42.0	11.7	16.2	6.1	—	8.1	Calm	7220.99	Bq Ci	9	St	—	SW	Ch	0	2	—	—	0	—	RBP			
1st	29.182	47.0	14.0	13.8	11.0	—	11.6	Calm	7220.99	Bq Ci	9	St	—	SW	Ch	0	2	—	—	0	—	RBP			
1st	29.184	43.0	15.8	15.2	12.9	58.8	15.2	Calm	7220.99	Bq Ci	9	St	—	—	Ch	0	0	—	—	0	—	SE 13			
1st	29.184	51.8	16.2	16.1	14.7	—	15.1	Calm	7221.10	Bq Ci	9	St	—	—	Ch	0	0	—	—	0	Blue sky to south	RBP			
				8-	112.2																				

EXPEDITION, 1910.

Month of _____

191

Meteorological

Register kept at

Day	Hour	Barometer No.	Attd. Ther. No.	THERMOMETERS				WIND Direction True	Force	ANEMOMETER		Weather	CLOUDS		Rain or Snow	Hours Sunshine	AURORA				REMARKS	Initials of Observer					
				Dry Bulb No.	Max. No.	Spirit Min. No.	Solar Radn. No.			Terr. Radn. No.	Miles Read		3 Min. Later	Amount			Kind	Upper	Lower	Erebus Smoke			N	E	S	W	
Saturday	4pm	29.200	51.8	15.2	16.2	15.2	—	17.2	Calm	722119	B. Cg	9	Stn	—	—	Ch	0	0	—	—	—	—	—	—	0	Beautifully sky of clouds	RWP
—	6pm	29.204	55.1	13.5	16.2	12.9	—	13.5	Calm	722119	B. Cg	9	Stn	—	—	Ch	0	1/2	—	—	—	—	—	—	0	—	3973
—	8pm	29.248	58.4	13.1	16.3	11.4	—	13.3	Calm	722119	B. Cg	9	Stn	—	—	Ch	0	0	—	—	—	—	—	—	0	—	RWP
Sunday	8am	29.286	45.8	10.5	11.1	9.2	—	7.5	Calm	722182	B. Cg	4	Stn	—	—	Ch	0	0	—	—	—	—	—	—	0	Layer of ice on the ice	RWP
—	12 noon	29.262	44.2	15.2	16.0	8.1	82.2	15.8	Calm	722480	B. Cg	5	Stn	—	—	Ch	0	2	—	—	—	—	—	—	0	Currents in the water	FVB
—	2pm	29.216	52.2	15.2	19.1	13.8	82.2	14.6	Calm	722867	B. Cg	5	Stn	—	—	Ch	0	2	—	—	—	—	—	—	0	—	RWP
—	4pm	29.212	51.2	15.0	16.2	12.5	—	13.6	Calm	722892	B. Cg	8	Stn	—	—	Ch	0	1	—	—	—	—	—	—	0	—	3973
—	6pm	29.194	50.8	15.0	15.3	12.5	—	12.6	ESE 1	723282	B. Cg	4	Stn	—	—	Ch	0	0	—	—	—	—	—	—	0	Shadows radiant in the water	RWP
—	8pm	29.180	54.0	12.4	15.2	10.8	—	10.7	Calm	723364	B. Cg	5	Stn	—	—	Ch	0	0	—	—	—	—	—	—	0	—	RWP
Monday	8am	29.172	50.2	17.0	20.8	11.9	61.2	18.1	Sy W 1	737237	B. Cg	8	Stn	—	—	Ch	0	0	—	—	—	—	—	—	0	—	RWP
—	10am	29.184	53.2	18.0	18.7	16.0	—	18.4	North by East	737314	C. 10	10	Stn	—	—	Ch	0	1/2	—	—	—	—	—	—	0	—	RWP
—	12 noon	29.164	50.0	17.1	18.8	16.7	61.2	19.0	Calm	737350	C. 10	10	Stn	—	—	Ch	0	1/2	—	—	—	—	—	—	0	—	RWP
24-3383																											

EXPEDITION, 1910.

Month of _____

191

Meteorological

Register kept at

Station to Day	Hour	Barometer No.	Attd. Ther. No.	THERMOMETERS				WIND		ANEMOMETER		Weather	CLOUDS		CLOUDS Direction moving from			Rain or Snow	Hours Sunshine	AURORA				REMARKS	Initials of Observer	
				Dry Bulb No.	Max. No.	Spirit Min. No.	Solar Radn. No.	Terr. Radn. No.	Direction True	Force	Miles Read		8 Min. Later	Amount	Kind	Upper	Lower			Erebus Smoke	N	E	S			W
Monday 2nd	2pm	29.160	56.4	17.0M 17.7	17.9	16.0	64.8	19.5M 19.9	Wans	7370.51	B2lg	8	St. Cir Scat St	-	-	1/2blo	S	0	-	-	-	-	-	0	Snow to NW & W.	RWP
-	4pm	29.146	54.1	16.3M 17.0	18.1	16.0	-	19.0M 19.0	Kaduk	7370.51	Cw	10	Scat	-	SE	Obs	Scat	0	-	-	-	-	-	0	Snow pends to north on Chelan	RWP
-	6PM	29.124	54.9	16.2M 16.9	17.2	14.8	-	16.9M 17.8	Calm	7373.57	C 10	10	Cal	-	Clear	-	-	0	-	-	-	-	-	0	Sand on cape shore and over SE 1/3 9th & 10th	RWP
-	8pm	29.120	61.8	14.8M 15.8	17.2	14.8	-	16.4M 16.4	Calm	7373.69	Cw	10	St	-	-	Obs	0	0	-	-	-	-	-	0	3 in. snow during night	RWP
Tuesday 3rd	8am	29.036	50.0	14.8M 15.4	18.1	14.2	-	16.5M 16.7	Sandburg	7365.04	Cw	10	Scat	-	SE	Obs	alt	0	-	-	-	-	-	0	Wind blowing off.	RWP
-	10am	29.022	51.0	16.0 16.8	17.8	14.8	-	16.6M 17.5	NE	7390.48	Cw	10	Scat	-	SE	Obs	alt	0	-	-	-	-	-	0	Wind blowing off.	RWP
-	12mm	28.984	47.2	14.5M 15.4	17.4	14.3	62.0	15.9M 16.2	NE	7404.49	BC 6.5	6	Cal	-	SE	Obs	alt	1/2	-	-	-	-	-	0	Heavy snow to SE & NE & NW	RWP
-	2pm	28.956	52.2	16.1 16.8	17.7	14.7	62.0	16.1M 19.3	Calm	7410.83	O 10	10	NW	-	-	Obs	alt	0	-	-	-	-	-	0	Translucent snow	RWP
-	4pm	28.923	54.0	16.3 17.0	17.1	15.6	-	16.5M 16.5	Calm	7411.34	O 10	10	NW	-	-	Obs	alt	0	-	-	-	-	-	0	Light granular snow falling	RWP
-	6PM	28.896	57.8	14.5M 15.1	17.0	14.5	-	16.5M 16.5	Calm	7412.27	O 10	10	NW	-	-	Obs	alt	0	-	-	-	-	-	0	Flaky snow. F & 9th	RWP
-	8pm	28.900	61.2	14.9M 15.8	17.7	14.4	-	16.6M 17.3	S	7413.14	O 10	10	NW	-	-	Obs	alt	0	-	-	-	-	-	0	Two inches snow during night	RWP
Wednesday 4th	8am	28.868	51.8	11.4M 12.2	15.5	11.0	-	14.0M 14.0	S 1-2	7420.15	O 10	10	NW	-	-	Obs	alt	0	-	-	-	-	-	0		RWP
		24 - 374.5																								

EXPEDITION, 1910.

Month of _____

191

Meteorological

Register kept at

Day	Hour	Barometer No.	Attd. Ther. No.	THERMOMETERS				WIND		ANEMOMETER		CLOUDS		CLOUDS		Rain or Snow	Hours Sunshine	AURORA				REMARKS	Initials of Observer			
				Dry Bulb No.	Max. No.	Spirit Min. No.	Solar Radn. No.	Terr. Radn. No.	Direction True	Force	Miles Read	3 Min. Later	Weather	Amount	Kind			Direction moving from		Erebus Smoke	N			E	S	W
																		Upper	Lower							
Wednesday	10am	28.888	62.0	10.9m	12.4	10.9	—	13.6m	W	1	742.03	0.10	10	Nb	—	—	Obs	Salt	0	—	—	—	—	0	Granular snow	RWP
—	12noon	28.914	47.3	9.3m	11.4	9.3	62.0	12.4m	W	1-0	742.9.64	0.10	10	Nb	—	—	Obs	Salt	0	—	—	—	—	0	Sl. Granular & spindles snow	RWP
—	2pm	28.958	62.2	8.6m	10.2	8.8	—	13.1m	Calm	—	743.4.62	0.10	10	Nb	—	—	Obs	Salt	0	—	—	—	—	0	Granular snow falling	RWP
—	6pm	29.028	48.8	9.0m	9.8	8.5	—	11.5m	W	1	744.988	0.10	10	Nb	—	—	Obs	Salt	0	—	—	—	—	0	Heavy Cumulus to S.E.	RWP
—	8pm	29.08	56.0	9.0m	9.9	9.0	—	9.9m	SE	1	745.4.04	0.10	10	Nb	—	—	Obs	Salt	0	—	—	—	—	0	Sl. Granular snow	RWP
Thursday	8am	29.183	48.0	8.0m	9.8	9.0	—	9.9m	Calm	—	747.6.40	0.10	10	Nb	—	—	Obs	Salt	0	—	—	—	—	0	Granular snow (Bar)	RWP
—	10am	29.199	48.4	7.9m	9.8	9.6	—	10.5m	Calm	—	747.6.41	0.10	10	Nb	—	—	Obs	Salt	0	—	—	—	—	0	"	RWP
—	12noon	29.176	48.8	8.0m	9.2	9.7	62.0	11.7m	S	1-2	748.5.04	0.10	10	Nb	—	—	Obs	Salt	0	—	—	—	—	0	Granular & spindles snow	RWP
—	2pm	29.100	51.9	10.4m	10.9	8.4	62.0	11.7m	S	1-2	750.9.90	0.10	9.5	Nb	—	—	Obs	Salt	0	—	—	—	—	0	Granular & spindles snow	RWP
—	4pm	29.076	62.0	12.1m	12.8	10.3	—	13.0m	S	2	750.9.89	0.10	10	Nb	—	—	Obs	Salt	0	—	—	—	—	0	"	RWP
—	6pm	29.012	64.8	13.0m	13.8	11.2	—	14.5m	S 45 E	1	751.8.58	0.10	10	Nb	—	—	Obs	Salt	0	—	—	—	—	0	"	RWP
—	8pm	29.036	60.8	13.0m	13.6	12.0	—	14.5m	Calm	—	751.9.05	0.10	10	Nb	—	—	Obs	Salt	0	—	—	—	—	0	"	RWP
24-2662																										

EXPEDITION, 1910.

Month of

191

Meteorological

Register kept at

[illegible]

EXPEDITION, 1910.

Month of _____

191

Meteorological

Register kept at

Day	Hour	Barometer	Attd. Ther.	THERMOMETERS				WIND		ANEMOMETER		Weather	CLOUDS		AURORA		REMARKS	Initials of Observer									
				Dry Bulb	Max.	Spirit Min.	Solar Radn.	Terr. Radn.	Direction True	Force	Miles Read		3 Min. Later	Amount	Kind	Upper			Lower	Erebus Smoke	Rain or Snow	Hours Sunshine	N	E	S	W	
Saturday 8th	4pm	29.100	49.0	11.7M	14.0	11.7	14.7	8.8M	ESE	4-7	79.6	79.7	B1C9	9	Clear	-	-	0	0	-	-	-	-	63.0	✓	Wind about same.	RBP
	6pm	29.156	49.0	11.9M	12.2	10.8	-	9.2M	ESE	3-5	80.4	80.4	DW	10	Clear	-	-	0	0	-	-	-	-	59.0	✓	Wind dropping	RBP
	8pm	29.188	55.0	15.0	13.6	11.4	-	15.9M	ESE	1	80.7	80.4	DW	10	Clear	-	-	0	0	-	-	-	-	53.0	✓	Wind about same. Slight clouds in	RBP
Sunday 9th	6am	29.118	42.2	13.2	15.0	11.9	-	12.6M	SW	1-3	81.3	81.2	B5C5	5	Clear	-	-	0	0	-	-	-	-	50.0	✓	Wind about same. Slight clouds in	RBP
	8am	29.080	47.8	10.6	13.2	9.0	-	10.2M	ESE	6-8	82.1	82.1	B5C5	5	Clear	-	-	0	0	-	-	-	-	50.0	✓	Strong wind. Sky clear	RBP
	10am	29.142	39.8	9.9M	11.6	11.9	9.1	10.2M	SE	6-8	82.6	82.6	B5C5	5	Clear	-	-	0	0	-	-	-	-	50.0	✓	Wind dropped but again rising	RBP
	12pm	29.124	38.2	11.1M	12.1	11.9	9.1	11.6M	SE	7-9	83.6	83.6	B5C5	3	Clear	-	-	0	0	-	-	-	-	50.0	✓	Sky clearing.	RBP
	2pm	29.110	40.8	13.9M	14.1	13.5	9.4	14.9M	ESE	1-7	84.4	84.4	B9C1	1	Clear	-	-	0	2	-	-	-	-	50.0	✓	Wind very gusty.	RBP
	4pm	29.128	44.0	15.2M	16.6	14.8	11.9	16.0M	SE	1-4	84.9	84.9	B9C1	1	Clear	-	-	0	2	-	-	-	-	50.0	✓	Wind falling	RBP
	6pm	29.140	49.0	14.0M	15.0	12.8	-	11.5	NE	1	85.0	85.1	B9C1	1	Clear	-	-	0	1	-	-	-	-	50.0	✓		RBP
	8PM	29.170	65.6	16.0M	11.0	13.9	10.0	11.6	W	2	85.2	85.2	B9C1	1	Clear	-	-	0	0	-	-	-	-	50.0	✓		RBP
Monday 10th	6AM	29.074	34.2	2.0	10.5	1.0	-	0.5	Calm	-	85.4	85.4	B9C1	1	Clear	-	-	0	0	-	-	-	-	50.0	✓	Heavy Stratus Cumulus to N, light snow over. Slight breeze.	RBP

EXPEDITION, 1910.

Meteorological

Register kept at

[illegible]

BRITISH ANTARCTIC

Month of _____

191

Meteorological

EXPEDITION, 1910.

Register kept at

[illegible]

BRITISH ANTARCTIC

EXPEDITION, 1910.

* *Spun showing through snow haze*

Month of

191

Meteorological

Register kept at

191

Month of

Day	Hour	Barometer No.	Attd. Ther. No.	THERMOMETERS				WIND		ANEMOMETER		Weather	CLOUDS		CLOUDS		Rain or Snow	Hours Sunshine	AURORA				REMARKS	Initials of Observer	
				Dry Bulb No.	Max. No.	Spirit Min. No.	Solar Radn. No.	Terr. Radn. No.	Direction True	Force	Miles Read		3 Min. Later	Amount	Kind	Upper			Lower	Erebus Smoke	N	E			S
Friday				18.8m				16.0																	
Saturday 14 th	8pm	29.360	50.2	19.0	22.5	15.0	—	19.0	ESE	8-12	9659.93	O10.	10	M	—	—	Glo	0	0	—	—	—	✓	Drift. Rearest yet	RUP
Saturday 15 th	6am	29.316	45.2	19.8m 20.7	23.1	16.5	57.3	16.9	WNW	1	9426.06	C10	10	St	—	—	Glo	0	0	—	—	—	0	Heavy snow squalls to 4 & 8	RUP
	8am	29.324	51.0	20.0m 21.0	20.9	19.6	—	16.5	WNW	1	9737.85	C10	10	St	—	—	Glo	0	0	—	—	—	0	Heavy drift. Clear to 4 & 8	RUP
	10am	29.312	47.2	20.9m 21.1m	20.9	19.3	—	16.0	WNW	5	9753.10	C10	10	St	—	ESE	Glo	0	0	—	—	—	0	Heavy snow to 4 & 8	RUP
	12am	29.288	46.2	21.1m 21.9	21.9	19.8	57.3	19.0	NW	3	9776.63	C10	10	St	—	ESE	Glo	0	0	—	—	—	0	Heavy snow. Clear to 4 & 8	RUP
	2pm	29.328	51.2	20.6m 19.0m	22.0	19.4	57.3	19.1m	NW	1-0	9788.46	C10	10	M	—	ESE	Glo	0	0	—	—	—	0	Heavy snow. Clear to 4 & 8	RUP
	4pm	29.346	54.2	19.7m 20.0m	21.0	19.0	—	17.8m	East by air		9797.04	C10	10	St	—	—	Glo	0	0	—	—	—	0	Clearing to 4 & 8	RUP
	6pm	29.360	58.3	20.5m 19.4m	18.0	20.8	—	16.5m	S	3-4	9803.95	C10	10	St	—	—	Glo	0	0	—	—	—	0	Southward wind. Clearing	RUP
	8pm	29.366	62.0	20.1m 16.4	20.8	19.0	—	17.5m	S	5-7	9842.47	Bocyl	7	St	—	—	Glo	0	0	—	—	—	0	Clearing to 4 & 8	RUP
Sunday 16 th	8am	29.462	47.3	17.5m 16.6	17.0	15.0	—	15.4m	SW	2	9975.17	Bocyl	5	St	—	ESE	Glo	0	0	—	—	—	0	Clearing to 4 & 8	RUP
	10am	29.516	54.2	17.1m 15.0m	22.0	16.0	—	15.2m	S	4	9995.98	Bocyl	3	St	—	S	Glo	0	0	—	—	—	0	Clearing to 4 & 8	RUP
	12am	29.536	57.0	15.8m 14.8	17.2	15.0	66.0	14.2	S 20 E	3-4	003139	B 8 C 2	2	St	—	—	Glo	0	1 1/2	—	—	—	0	Clearing to 4 & 8	RUP
24-4611																									

24-4611

BRITISH ANTARCTIC

EXPEDITION, 1910.

Month of

191

Meteorological

Register kept at

Day	Hour	Barometer	Attd. Ther.	THERMOMETERS				WIND		ANEMOMETER		Weather	CLOUDS		CLOUDS		Rain or Snow	Hours Sunshine	AURORA				REMARKS	Initials of Observer	
				Dry Bulb	Max.	Spirit Min.	Solar Radn.	Terr. Radn.	Direction True	Force	Miles Read		3 Min. Later	Amount	Kind	Direction moving from			Erebus Smoke	Upper	Lower	N			E
		No.	No.	No.	No.	No.	No.	No.	No.	No.	No.	No.	No.	No.	No.	No.	No.	No.	No.	No.	No.	No.	No.	No.	
Sunday 6	2pm	29.602	59.0	14.0	17.2	13.5	12.9	S	3	58.14	B2C2	8	Sc	—	S	Ch	0	1/2	—	—	—	—	0	RW	
	4pm	29.612	57.8	13.3	14.8	13.3	13.1	S	2-3	65.12	B2C9	9	Sc	—	—	Ch	0	0	—	—	—	—	0	RW	
	6pm	29.586	60.2	13.5	15.1	12.7	13.3	S	2	100.65	B10	10	Ch	—	—	Ch	0	0	—	—	—	—	0	RW	
	8pm	29.660	60.8	12.6	14.0	11.9	12.7	Sc	1-2	108.62	C20	10	Ch	—	—	Ch	0	0	—	—	—	—	0	RW	
Monday 7	6am	29.666	42.4	8.4	13.0	7.9	32.4	Calm	0	123.91	C10	10	Ch	—	—	Ch	0	0	—	—	—	—	0	RW	
	8am	29.696	49.0	8.4	8.7	7.8	8.0	Calm	0	125.29	C10	10	Ch	—	—	Ch	0	0	—	—	—	—	0	Sl. granular snow	RW
	10am	29.626	49.4	8.5	9.1	8.2	8.4	S	1-2	134.07	C10	10	Ch	—	—	Ch	0	0	—	—	—	—	0	Heavy cloud to S.	RW
	12pm	29.652	46.2	7.5	9.1	7.2	8.8	Calm	0	138.57	C10	10	Ch	—	—	Ch	0	0	—	—	—	—	0		RW
	2pm	29.628	52.8	7.7	7.9	6.7	8.4	Calm	0	141.01	C10	10	Ch	—	—	Ch	0	0	—	—	—	—	0		RW
	4pm	29.576	50.2	6.8	8.1	6.8	7.8	W	1-2	143.96	C10	10	Ch	—	—	Ch	0	0	—	—	—	—	0		RW
	6pm	29.528	51.2	6.5	9.6	6.5	7.9	W	1-2	146.81	C10	10	Ch	—	—	Ch	0	0	—	—	—	—	0	Heavy fog & snow	RW
	8pm	29.488	57.6	6.8	10.2	9.0	8.4	W	1-2	154.35	C10	10	Ch	—	—	Ch	0	0	—	—	—	—	0		RW
		24 - 244.1																							

BRITISH ANTARCTIC

EXPEDITION, 1910. *uncorrected again!

Month of

191

Meteorological

Register kept at

191

to diurnal

Day	Hour	Barometer	Attd. Ther.	THERMOMETERS				WIND		ANEMOMETER		Weather	CLOUDS		CLOUDS		Rain or Snow	Hours Sunshine	AURORA				REMARKS	Initials of Observer		
				Dry Bulb	Max.	Spirit Min.	Solar Radn.	Terr. Radn.	Direction True	Force	Miles Read		3 Min. Later	Upper	Lower	Erebus Smoke			Direction moving from							
																			N	E	S	W				
		No.	No.	No.	No.	No.	No.																			
Tuesday	6am	29.060	42.8	18.3	13.8	9.9	52.4	4.9	6.0	SW	1	213	02	010	10	Nb	—	—	0	—	—	—	—	0	Pls	
	8am	29.060	51.2	13.2	13.8	12.6	—	12.4	13.6	SW	1	221	47	010	10	Nb	—	—	0	—	—	—	—	0	Pls	
	10am	29.060	51.2	13.5	13.9	12.8	—	12.5	12.6	SW	1-0	225	08	010	10	Nb	—	—	0	—	—	—	—	0	Pls	
	12noon	29.036	52.2	13.3	13.8	12.5	52.9	13.8	14.0	SE	1-	229	29	010	10	St. Cu	—	—	0	—	—	—	—	0	Pls	
	2pm	29.030	59.2	12.1	13.9	11.9	52.9	12.1	12.1	Calm	—	233	35	Bd	9	Nb	—	—	0	—	—	—	—	0	Pls	
	4pm	28.996	54.6	10.2	13.0	9.8	—	9.8	9.8	Calm	—	237	11	Bd	5	Nb	—	S	0	—	—	—	—	0	Pls	
	6pm	28.900	56.4	12.0	13.6	10.0	—	12.5	16.6	SE	5-7	271	42	Bd	4	Nb	—	—	0	—	—	—	—	0	Pls	
	8pm	28.868	53.8	11.2	13.9	9.0	—	10.5	11.8	E	4-7	359	58	—	—	Nb	—	—	0	—	—	—	—	0	Pls	
Wednesday	6am	28.902	32.9	8.9	13.3	—	52.9	7.0	6.8	S	3-4	578	57*	010	10	Nb	—	—	0	—	—	—	—	0	Pls	
	8am	28.982	39.0	7.3	9.6	5.8	—	6.6	6.6	S	3-4	607	17	010	10	Nb	—	—	0	—	—	—	—	0	Pls	
	10am	29.034	45.4	6.3	7.4	3.9	—	6.1	6.8	S	3-4	640	80	010	10	Nb	—	—	0	—	—	—	—	0	Pls	
	12noon	29.084	48.1	6.9	7.2	5.5	52.8	6.0	6.8	S	10-8	3-4	662	34	010	10	Nb	—	—	0	—	—	—	—	0	Pls
		24		-260.1																						

BRITISH ANTARCTIC

Month of _____

191

Meteorological

EXPEDITION, 1910.

Register kept at

[illegible]

EXPEDITION, 1910.

Month of _____

191

Meteorological

Register kept at

to 11mo 18

[illegible]

BRITISH ANTARCTIC

EXPEDITION, 1910.

Month of

191

Meteorological

Register kept at

191

Month of

Date to Day	Hour	Barometer No.	Attd. Ther. No.	THERMOMETERS				WIND		ANEMOMETER		Weather	CLOUDS		CLOUDS		Rain or Snow	Hours Sunshine	AURORA				REMARKS	Initials of Observer
				Dry Bulb No.	Max. No.	Spirit Min. No.	Solar Radn. No.	Terr. Radn. No.	Direction True	Force	Miles Read		3 Min. Later	Amount	Kind	Direction moving from			Erebus Smoke	Upper	Lower	N		
Sat 22nd	6pm	29.170	47.0	+0.5 +1.0	-	+0.5	-	+0.0	Calm	-	-	Cw	10	lul	-	-	Ch	0	0	-	-	-	-	Rel
-	8pm	29.166	52.1	+0.1 +0.0	-	+0.1	-	+0.0	Calm	-	-	Bq	9	lul	-	-	Ch	0	0	-	-	-	-	Rel
Sunday 23rd	6am	29.178	38.1	-1.3 -1.8	-	-1.3	4.8	-3.0	Small cum	-	-	Bq	3	lul	-	NE	Ch	0	0	-	-	-	-	Rel
-	10am	29.228	52.2	-4.2 -2.8	-	-4.1	-	-6.6	Calm	✓	-	Bq	1	lul	-	NW	Ch	0	0	-	-	-	-	Rel
-	12pm	29.234	37.8	-2.2 -1.4	-	-7.0	5.9	-9.2 -3.5 -5.2	SW 1-3	-	-	Bq	1	St Cl	-	SE	Clear	0	1 3/4	-	-	-	-	Rel
-	2pm	29.268	46.8	-1.7 -6.0	-	-3.4	5.9	-4.0	SW 1	-	-	Bq	2	St Cl	-	-	Ch	0	2	-	-	-	-	Rel
-	4pm	29.268	42.8	-5.8 -5.0	-	-6.0	-	-10.5	Calm	-	-	Bq	1	St Cl	-	-	Ch	0	2	-	-	-	-	Rel
-	6pm	29.310	45.2	-4.3 -3.2	-	-6.0	-	-11.8 -8.0	Calm	-	-	Bq	2	St Cl	-	-	Ch	0	0	+	-	-	-	Rel
-	8pm	29.312	45.8	-3.0 -5.5	-	-6.5	-	-13.2 -11.0	Calm	-	-	Bq	1	St Cl	-	-	Ch	0	0	✓	-	-	-	Rel
Monday 24th	6am	29.382	32.2	-5.3 -5.7	-	-8.5	1.5	-11.0 -10.1	Small cum	-	-	Bq	2	St Cl	-	-	Ch	0	0	✓	-	-	-	Rel
-	8am	29.390	36.2	-5.7 -5.0	-	-6.4	-	-12.8 -9.8	NW 1	-	-	Bq	1	lul	-	NW	Ch	0	0	-	-	-	-	Rel
-	10am	29.396	37.4	-5.2 -5.9	-	-9.1	-	-12.8	Calm	-	-	Bq	1	St Cl	-	-	Ch	0	0	-	-	-	-	Rel
				+ 2		4		85.9																

+ 2 1/4 5.9

BRITISH ANTARCTIC

EXPEDITION, 1910.

Month of

191

Meteorological

Register kept at

Day	Hour	Barometer No.	Attd. Ther. No.	THERMOMETERS				WIND		ANEMOMETER		Weather	CLOUDS		CLOUDS		Rain or Snow	Hours Sunshine	AURORA				REMARKS	Initials of Observer		
				Dry Bulb No.	Max. No.	Spirit Min. No.	Solar Radn. No.	Terr. Radn. No.	Direction True	Force	Miles Read		3 Min. Later	Amount	Kind	Upper			Lower	moving from	N	E			S	W
Monday 24	6am	29.605	37.5	-6.1	-	-9.8	47.9	-12.7M	Calm	-	-	Bg C	4	St	-	-	Ch	0	2	-	-	-	-	0	Ullshute & St C to North	RHP
-	8am	29.396	45.2	-7.9	-30	-7.9	47.9	-10.6M	Calm	948.29	-	Bg C	1	St	-	-	Ch	0	2	-	-	-	-	0	-	RHP
-	10am	29.402	43.8	-1.8	-2.6	-7.0	-	-10.6M	N. E. 3	955.05	-	Bg C	3	St	-	NE	Ch	0	1 1/2	-	-	-	-	0	Scud many feet from NE	RHP
-	12pm	29.376	49.0	-6.3	-1.8	-6.0	-	-8.4M	Calm	954.85	-	Bg C	3	St	-	-	Ch	0	0	-	-	-	-	0	Ice separating from air.	RHP
-	2pm	29.414	50.9	-4.8	-3.2	-6.2	-	-8.9M	Calm	954.86	-	Bg C	1	St	-	-	Ch	0	0	-	-	-	-	0	-	RHP
Monday 25	6am	29.528	39.2	+4.8	+5.0	-4.8	43.9	-7.8M	Calm	972.24	-	Bg C	1	St	-	-	Ch	0	0	-	-	-	-	0	Haze.	RHP
-	8am	29.526	45.0	+4.8	+6.4	+3.9	-	-0.9M	Southerly	972.24	-	Bg C	3	St	-	NW	Clear	0	0	-	-	-	-	0	-	RHP
-	10am	29.556	46.2	+5.0	+5.6	+1.9	-	-0.4M	Southerly	972.24	-	Bg C	9	St	-	-	Ch	0	0	-	-	-	-	0	Clear to South east & South	RHP
-	12pm	29.528	40.4	+6.5	+7.8	+4.7	43.9	+3.0M	Southerly	972.24	-	C10	10	St	-	-	Ch	0	0	-	-	-	-	0	-	RHP
-	2pm	29.526	60.0	+7.9	+10.6	+6.0	44.3	+5.5M	Easterly	972.24	-	Bg C	8	St	-	NW	Ch	0	1	-	-	-	-	0	-	RHP
-	4pm	29.526	50.2	+11.0	+12.3	+9.6	-	+8.6M	Calm	974.73	-	Bg C	9	St	-	-	Ch	0	1 1/2	-	-	-	-	0	-	RHP
-	6pm	29.500	54.6	+13.0	+13.2	+10.9	-	+10.8M	Northwesterly	-	-	Bg C	3	St	-	-	Ch	0	0	-	-	-	-	0	-	RHP
		24-51.6		+11.0		-4																				RHP

EXPEDITION, 1910.

Month of _____

191

Meteorological

Register kept at

Day	Hour	Barometer	Attd. Ther.	THERMOMETERS				WIND		ANEMOMETER		Weather	CLOUDS		CLOUDS		Rain or Snow	Hours Sunshine	AURORA					REMARKS	Initials of Observer	
				Dry Bulb	Max.	Spirit Min.	Solar Radn.	Terr. Radn.	Direction True	Force	Miles Read		3 Min. Later	Amount	Kind	Direction moving from			Upper	Lower	Rebus Smoke	N	E			S
		No.	No.	No.	No.	No.	No.	No.																		
Tuesday	8pm	29.526	57.2	+11.0 +10.8 +14.2	+16.4	+16.8	—	+8.0 +8.2	Calm	—	B/C3	3	Str	—	—	—	0	0	—	—	—	—	—	—	R.P.	
Wednesday 26 th	6am	29.540	45.0	+14.4 +12.5	+14.4	+10.8	44.3	+8.2 +13.5	S.W.	—	O10	10	Nb	—	—	Gls	Salt	0	—	—	—	—	—	0	A few flakes of snow falling	R.P.
	8am	29.544	60.2	+13.0 +12.5	+14.0	+12.5	—	+12.1 ^m	Calm	—	O10	10	Nb	—	—	Gls	Salt	0	—	—	—	—	—	0	Snow fog like Scotch mist	R.P.
	10am	29.616	51.8	+12.4 +13.8 +12.5	+13.4	+12.4	—	+12.1 ^m +12.9 ^p	S.W.	—	O10	10	Nb ₁₀	—	—	Gls	S	0	—	—	—	—	—	0	Flicker snow falling	R.P.
	12m	29.608	50.6	+12.9 +10.3	+13.4	+12.5	—	+12.6 ^m	S.W.	—	O10	10	Nb ₁₀	—	—	Gls	S	0	—	—	—	—	—	0	Crystals of snow. Stars	R.P.
	4pm	29.616	53.3	+11.0 +9.1	+13.1	+10.3	—	+10.6 ^m	S.W.	—	O10	10	Nb ₁₀	—	—	Gls	S	0	—	—	—	—	—	0	Sky brightening a little	R.P.
	6pm	29.624	56.0	+9.9 +8.4	+10.4	+9.1	—	+8.9 ^m	Calm	—	O10	10	Nb ₁₀	—	—	Gls	Salt	0	—	—	—	—	—	0		R.P.
	8pm	29.616	58.0	+10.0 +8.3	+10.4	+9.4	—	+9.3 ^m	Noth by fair	—	O10	10	Nb ₁₀	—	—	Gls	S	0	—	—	—	—	—	0	Flakes of snow falling	R.P.
Thursday 27 th	6am	29.458	44.8	+8.3 +9.0	+10.8	+9.3	44.3	+8.2 ^m +8.8 ^p	N.W.	—	O10	10	Nb ₁₀	—	—	Gls	S	0	—	—	—	—	—	0	Granular & specular snow falling	R.P.
	8am	29.460	60.8	+8.1 +8.6	+9.1	+8.1	—	+7.9 ^m	Noth by fair	99.5.34	O10	10	Nb ₁₀	—	—	Gls	S	0	—	—	—	—	—	0	3 1/4 inches snow during night (meas)	R.P.
	10am	29.468	51.3	+8.0 +8.2 +1.1	+8.5	+8.0	—	+7.9 ^m	Calm	—	O10	10	Nb ₁₀	—	—	Gls	S	0	—	—	—	—	—	0	Granular & specular snow	R.P.
	2pm	29.462	47.0	+1.4	+9.8	+1.1	44.5	+8.2 ^m	Calm	—	O10	10	Nb ₁₀	—	—	Gls	S	0	—	—	—	—	—	0	Granular & specular snow	R.P.
				24 251.9																						

BRITISH ANTARCTIC

EXPEDITION, 1910.

Month of

191

Meteorological

Register kept at

Initial Day	Hour	Barometer No.	Attd. Ther. No.	THERMOMETERS				WIND		ANEMOMETER		Weather	CLOUDS		CLOUDS Direction moving from		Rain or Snow	Hours Sunshine	AURORA				REMARKS	Initials of Observer			
				Dry Bulb No.	Max. No.	Spirit Min. No.	Solar Radn. No.	Terr. Radn. No.	Direction True	Force	Miles Read		3 Min. Later	Amount	Kind	Upper			Lower	Erebus Smoke	N	E			S	W	
Thursday 24 th	2pm	29.420	53.3	+5.3	+7.2	+5.3	44.3	+6.5	Calm	—	—	B1Cg	9	Sl-8	—	—	Gls	0	0	—	—	—	—	—	Clear W. Cloud much thinner	RWP	
—	4pm	29.392	52.8	+5.2	+7.0	+5.0	—	+5.4	W. gale	—	—	Cw	W	Sl-8	—	—	Gls	0	0	—	—	—	—	—	Thick to South.	RWP	
—	6pm	29.406	53.2	+5.0	+6.0	+4.6	—	+4.6	SE	1-4	—	Cw	W	Sl-8	—	—	Gls	0	0	—	—	—	—	—	} Smothering wind starts	RWP	
—	8pm	29.416	60.2	+3.9	+6.1	+3.9	—	+3.2	SSE	1-4	—	Cw	W	Sl-8	—	—	Gls	0	0	—	—	—	—	—		RWP	
Friday 25 th	8am	29.336	52.6	+2.4	+4.0	+1.2	44.3	+2.0	SE	4-6	115	9.5	Cw	W	Sl-8	—	—	Gls	0	0	—	—	—	—	—	Little drift, all local	RWP
—	10am	29.368	48.2	+1.9	+3.0	+1.1	—	+1.4	StOE	2-5	118	5.22	B1Cg	9	Sl-8	—	—	Gls	0	0	—	—	—	—	—	Clearing over, shifted to N	RWP
—	12am	29.352	45.8	+1.3	+2.5	+1.3	44.3	+1.2	SWC	3-5	121	4.18	B1Cg	9	Sl-8	—	—	Gls	0	0	—	—	—	—	—	No change	RWP
—	2pm	29.374	53.3	+0.1	+2.0	-0.1	44.3	-0.4	SE	4	123	9.79	B2Cg	8	Sl-8	—	—	Gls	0	0	—	—	—	—	—	Clearing to E & S.	RWP
—	4pm	29.348	55.0	+0.1	+1.0	-0.4	—	-0.9	S	2-4	—	Bw	W	Sl-8	—	—	Gls	0	0	—	—	—	—	—	Clouds clearing again	RWP	
—	6pm	29.344	59.7	+0.3	+1.5	0.0	—	0.0	S	1-3	—	B2Cg	8	Sl-8	—	—	Gls	0	0	—	—	—	—	—	Clearing towards South	RWP	
—	8pm	29.344	60.4	-1.1	+1.5	+1.1	—	-1.8	S	2-5	—	B2Cg	2	Sl-8	—	—	Gls	0	0	—	—	—	—	—	Arch of aurora NW & NE	RWP	
Saturday 26 th	6am	29.262	38.2	-2.0	+1.0	-6.6	44.3	-8.4	S	1-0	—	B2Cg	5	Sl-8	—	—	Gls	0	0	—	—	—	—	—	0	Finely granular snow falling	RWP
				+5.4	-4.7																						

Wind calculated to.

Wind calculated to

EXPEDITION, 1910.

Month of _____

191

Meteorological

Register kept at

to 1100

Day	Hour	Barometer No.	Attd. Ther. No.	THERMOMETERS				WIND		ANEMOMETER		Weather	CLOUDS		CLOUDS		Rain or Snow	Hours Sunshine	AURORA					REMARKS	Initials of Observer				
				Dry Bulb No.	Max. No.	Spirit Min. No.	Solar Radn. No.	Terr. Radn. No.	Direction True	Force	Miles Read		3 Min. Later	Amount	Kind	Direction moving from			Upper	Lower	Erebus Smoke	N	E			S	W		
Saturday 29 th	6am	29.294	47.8	-1.5	-1.0	-3.2	-	-3.8	SSE	1-3	-	O 10	10	Nb	-	-	Obs	Salt	0	-	-	-	-	-	-	-	-	Specular snow fall	RP
	6am	29.312	48.2	-1.5	-0.6	-2.0	-	-2.3	SSE	3-4	-	O 10	10	Nb	-	-	Obs	Salt	0	-	-	-	-	-	-	-	-	Heavy snow weather.	RP
	12 noon	29.310	47.8	-1.0	-1.9	-	-	-1.9	S20W	1-3	-	O 10	10	Nb	-	-	Obs	Salt	0	-	-	-	-	-	-	-	-	Specular snow fall	RP
	2pm	29.326	47.6	-1.7	-0.4	-2.0	-	-1.8	S50W	2-3	-	O 10	10	Nb	-	-	Obs	S	0	-	-	-	-	-	-	-	-	Specular snow fall	RP
	4pm	29.326	48.2	-1.2	-2.3	-	-	-2.2	S25W	2.3	-	O 10	10	Nb	-	-	Obs	S	0	-	-	-	-	-	-	-	-	Specular snow fall	RP
	6pm	29.348	55.2	-1.7	-0.4	-2.0	-	-2.0	S10W	1	-	B 10	6	Nb	-	-	Obs	S	0	-	-	-	-	-	-	-	-	Specular snow fall	RP
Sunday 30 th	8pm	29.356	57.8	-2.2	-1.2	-2.8	-	-3.5	S20W	2	-	B 8	2	St	-	-	Obs	0	0	-	-	-	-	-	-	-	0	Clear, fine zenith	RP
	10am	29.412	35.2	+2.5	+10.1	-4.5	44.3	-3.8	Calm	-	-	B 10	3	St	-	-	Obs	0	0	-	-	-	-	-	-	-	0		RP
	12 noon	29.442	44.2	+1.2	+2.9	-2.5	44.8	+1.5	Calm	-	-	B 8	2	St	-	-	Clear	0	1 1/2	-	-	-	-	-	-	-	0	Heavy St. Cu to N. E	RP
	2PM	29.466	45.3	+1.2	+3.9	-2.5	44.3	+1.5	Calm	-	-	B 8	2	St	-	-	Clear	0	2	-	-	-	-	-	-	-	0		RP
	4pm	29.484	49.2	+1.2	+3.0	-5.2	-	-1.8	Variable	-	-	B 8	2	St	-	-	Ch	0	1 1/2	-	-	-	-	-	-	-	0		RP
	6pm	29.490	53.2	-0.3	-0.1	-6.0	-	-7.0	Calm	-	-	B 9	1	St	-	-	Ch	0	0	-	-	-	-	-	-	-	0		RP
(3) -31 4 +9.7																													

BRITISH ANTARCTIC

EXPEDITION, 1910.

Month of

191

Meteorological

Register kept at

Day	Hour	Barometer	Attd. Ther.	THERMOMETERS					WIND		ANEMOMETER		Weather	CLOUDS		CLOUDS			Rain or Snow	Hours Sunshine	AURORA				REMARKS	Initials of Observer
				Dry Bulb	Max.	Spirit Min.	Solar Radn.	Terr. Radn.	Direction True	Force	Miles Read	3 Min. Later		Amount	Kind	Direction moving from					N	E	S	W		
																Upper	Lower	Erebus Smoke								
Sunday 30th	8pm	29.490	49.0	-2.8	-2.3	-4.8	-	-9.0	Calm	-	BqC	7	H	-	-	Ch	0	0	NW to SE	-	0					RWP
Monday 1st	6am	29.506	31.8	-5.3M	-0.2	-5.8	44.3	-8.0	Calm	-	BqC	7	SH	-	-	Ch	0	0	NW to SE	-	0					RWP
	8am	29.460	36.4	-1.5M	-1.5	-5.9	-	-8.6	Calm	-	B2Cg	7	SH	-	-	Ch	0	0		-	0	St. Radant. radant. H. RWP				RWP
	10am	29.418	40.2	+0.2M	+1.1	+1.6	-1.8	-4.1	Calm	-	B4C6	6	SH	N	E	Ch	0	0		-	0	St. Radant. N. & S. radant. N. RWP				RWP
	12noon	29.404	38.2	+0.2M	+1.0	+1.9	-1.0	-3.1	Calm	-	B2C8	8	SH	-	-	Ch	0	0		-	0					RWP
	2pm	29.404	45.8	+2.2M	+3.2	+2.8	+0.5	-0.5	Calm	-	B2C8	8	SH	-	-	Ch	0	0		-	0					RWP
	4pm	29.406	44.0	+4.1M	+4.0	+4.5	+2.6	+1.0	Calm	-	B1Cg	9	SH	-	-	Ch	0	0		-	0	St. Radant. N. & S. radant. N. RWP				RWP
	6PM	29.406	46.9	+5.0	+5.2	+2.5	-	+0.2M	Calm	-				-	-	-	-	-		-	0	St. Radant. N. & S. radant. N. RWP				RWP
	8pm	29.404	52.2	+7.2	+7.3	+4.8	-	+3.0M	Calm	-	B2Cg	22	SH	-	-	Ch	0	0		-	0					RWP
Thursday 2nd	6am	29.356	38.4	+1.2	+7.5	-2.8	44.3	+4.2	Calm	-	BqC	7	SH	-	SE	Ch	0	0		-	0					RWP
	10am	29.392	48.4	+5.2	+1.8	-0.8	-	+5.0	Calm	-	BqC	-1	SH	-	-	Ch	0	0		-	0					RWP
	12noon	29.392	42.3	+3.5	+3.9	-0.9	44.3	-4.2M	Calm	-	BqC	1	SH	-	-	Ch	0	2		-	0					RWP

BRITISH ANTARCTIC

EXPEDITION, 1910.

Month of

191

Meteorological

Register kept at

191

Month of

Day	Hour	Barometer	Attd. Ther.	THERMOMETERS					WIND		ANEMOMETER		Weather	CLOUDS		CLOUDS		Rain or Snow	Hours Sunshine	AURORA				REMARKS	Initials of Observer	
				Dry Bulb	Max.	Spirit Min.	Solar Radn.	Terr. Radn.	Direction True	Force	Miles Read	3 Min. Later		Amount	Kind	Upper	Lower			Erebus Smoke	N	E	S			W
Thursday	2 PM	29.424	48.2	+2.0	+5.1	+1.9	44.2	-2.5	Calm	—	—	B9C1	1	Wst	—	—	—	—	2	—	—	—	—	—	—	FLB
	4 PM	29.448	46.8	+1.2	+3.1	+0.8	—	-2.8	Calm	—	—	B9C1	1	Wst	—	—	Ch	0	—	—	—	—	—	—	—	FLB
	6 PM	29.460	50	+4.6	+4.8	+1.0	—	-1.0	Calm	—	—	B9C1	1	Wst	—	—	Ch	0	—	—	—	—	—	—	—	FLB
	8 PM	29.496	54.8	+0.8	+1.3	+0.8	—	-2.0	Sul	1	—	B8C2	2	Wst	—	—	Ch	0	—	—	—	—	—	—	—	FLB
Wednesday	6 AM	29.468	39.8	+4.9	+5.2	+0.8	44.3	+0.0	Calm	—	—	B5C5	5	Wst	—	—	Ch	0	—	—	—	—	—	—	—	FLB
	8 AM	29.476	47.5	+2.8	+5.7	+1.5	—	+1.3	Calm	—	—	B4C6	6	Wst	—	—	Ch	0	—	—	—	—	—	—	—	FLB
	10 AM	29.508	49.3	+2.8	+5.7	+0.8	—	-2.3	Calm	—	—	B5C5	5	Wst	—	—	Ch	0	—	—	—	—	—	—	—	FLB
	12 noon	29.480	43.2	+2.0	+2.3	-0.9	44.5	-5.2	Calm	—	—	B3C7	7	Wst	—	—	Ch	0	—	—	—	—	—	—	—	FLB
	2 PM	29.468	43.8	-0.4	+2.4	-1.4	44.5	-5.2	Calm	—	—	B4C6	6	Wst	—	—	Ch	0	—	—	—	—	—	—	—	FLB
	4 PM	29.442	41.0	-3.6	+0.0	-4.5	—	-7.0	Calm	—	—	B2C8	8	Wst	—	—	Ch	0	—	—	—	—	—	—	—	FLB
	6 PM	29.444	44.0	+2.2	+1.5	-4.0	—	-7.0	Calm	—	—	B1C9	9	Wst	—	—	Ch	0	—	—	—	—	—	—	—	FLB
	8 PM	29.426	46.8	+0.1	+1.8	+0.1	—	-4.6	Calm	—	—	B2C7	7	Wst	—	—	Ch	0	—	—	—	—	—	—	—	FLB

BRITISH ANTARCTIC EXPEDITION, 1910.

Month of

191

Meteorological

Register kept at

Day	Hour	Barometer No.	Attd. Ther. No.	THERMOMETERS					Direction True	Force	ANEMOMETER		Weather	CLOUDS		CLOUDS			Rain or Snow	Hours Sunshine	AURORA				REMARKS	Initials of Observer
				Dry Bulb No.	Max. No.	Spirit Min. No.	Solar Radn. No.	Terr. Radn. No.			Miles Read	3 Min. Later		Amount	Kind	Direction moving from										
																Upper	Lower	Erebus Smoke			N	E	S	W		
Thursday 4 th	6am	29.330	38.2	-3.0 -2.6	+1.8	-3.8	—	-6.0	Calm	—	—	BcLs	2	Nb	—	SE	Gls	0	0	—	—	—	—	0	Many cloud to NW & S.	RRP
	10am	29.350	43.2	-1.0 -0.7	—	-5.4	—	-5.0	S	1	—	BcLs	4	Al	—	—	Gls	0	0	—	—	—	—	0		RRP
	12 noon	29.374	44.0	-1.3 -1.1	-0.9	-2.5	44.2	-4.6	SE	1	—	BcLs	9	Al	—	—	Gls	0	0	—	—	—	—	0	Nb to S and SE	RRP
	2pm	29.358	50.4	-0.4 +0.4	+0.4	+0.4	—	-3.0	S	1-2	—	BcLs	8	Al	—	SE	Gls	0	0	—	—	—	—	0		RRP
	4pm	29.368	51.3	+0.2 +1.0	-0.5	+1.2	—	-0.7	S	2-3	—	Dls	10	Nb	—	—	Gls	0	0	—	—	—	—	0		RRP
	6pm	29.388	53.8	-0.2	+0.9	-0.2	—	-1.1	S	1	—	Ols	10	Nb	—	—	Gls	0	0	—	—	—	—	0		RRP
	8pm	29.380	56.2	-0.3	+0.7	-2.2	—	-3.0	W	1	—	BcLs	3	Nb	—	—	Gls	0	0	—	—	—	—	0		RRP
Friday 5 th	6am	29.272	37.6	+1.0 +1.2	+1.2	-4.2	—	-4.9	SE	1	—	Rn	10	Nb	—	—	Gls	0	0	—	—	—	—	0	slt granular snow falling	RRP
	8am	29.284	45.0	+0.6 +1.0	+1.2	-0.6	—	-0.8	SE	1	—	Cls	10	Nb	—	—	Gls	0	0	—	—	—	—	0	Few grains of snow	RRP
	10am	29.296	49.0	+1.4 +1.6	+1.6	+0.4	—	+0.8	S	2-3	—	Cls	10	Nb	—	—	Gls	0	0	—	—	—	—	0		RRP
	12 noon	29.342	47.0	+1.2 +1.7	+1.9	+1.2	—	+1.0	N	2-3	—	BcLs	9	Nb	—	—	Gls	0	0	—	—	—	—	0	thickening to the S	RRP
	2pm	29.290	52.1	-0.5 +1.8	+1.8	-0.5	—	-1.8	Calm	—	—	BcLs	9	Nb	—	—	Gls	0	0	—	—	—	—	0	Clear to SW.	RRP

29.25
0.2
0.2

BRITISH ANTARCTIC

EXPEDITION, 1910.

Month of

191

Meteorological

Register kept at

191

to 1911

Day	Hour	Barometer	Attd. Ther.	THERMOMETERS				Terr. Radn.	WIND		ANEMOMETER		Weather	CLOUDS		CLOUDS			Rain or Snow	Hours Sunshine	AURORA				REMARKS	Initials of Observer		
				Dry Bulb	Max.	Spirit Min.	Solar Radn.		Direction True	Force	Miles Read	3 Min. Later		Amount	Kind	Upper	Lower	Erebus Smoke			N	E	S	W				
Friday	4 PM	29.272	51.2	+0.0	+0.2	-1.2	-	-2.9	Calm	-	-	B. Cg	9	Nb	-	-	Obs	0	0	-	-	-	-	-	-	-	-	
	6 PM	29.264	52.6	+3.4	+3.8	-0.6	-	-1.6	S	1-4	-	B. Cg	9	Nb	-	-	Obs	0	0	-	-	-	-	-	-	-	South wind coming	
	8 PM	29.216	53.3	+4.2	+5.4	+2.4	-	+1.6	E	6-7	-	-	-	-	-	-	Obs	0	0	-	-	-	-	-	-	-	Wind rising	
Saturday	5 AM	28.954	21.0	+11.2	+16.0	-	-	+0.0	ESE	12	21.6	1.0	Cw	32	Nb	-	-	Obs	0	0	-	-	-	-	-	-	-	Wind impetuously flying
	6 AM	28.944	25.9	+10.5	+15.9	-	-	+3.2	ESE	10-11	22.8	0.5	Cw	-	Nb	-	-	Obs	0	0	-	-	-	-	-	-	-	Wind a little less
	7 AM	29.068	37.8	+12.9	+16.1	-	-	-	SE	10-11	23.0	1.45	Cw	-	Nb	-	-	Obs	0	0	-	-	-	-	-	-	-	Wind about same
	8 PM	29.088	37.8	13.2	+13.4	-	-	-	E	10-11	-	-	Cw	-	Nb	-	-	Obs	0	0	-	-	-	-	-	-	-	No change
	4 PM	29.248	48.0	+10.0	+13.5	-	-	-	SE	7-9	-	-	Cw	-	Nb	-	-	Obs	0	0	-	-	-	-	-	-	-	Remained more dull
	5 PM	29.602	55.8	+14.5	+14.5	-	-	-	SW	3-5	-	-	Cw	-	Nb	-	-	Obs	0	0	-	-	-	-	-	-	-	Wind moderate
	8 PM	29.638	58.8	13.5	15.0	-	-	-	E	0-6	-	-	Cw	-	Nb	-	-	Obs	0	0	-	-	-	-	-	-	-	Wind very gusty
Sunday	6 AM	29.642	43.8	14.5	15.0	-	-	-	SE	0-5	-	-	Cw	-	Nb	-	-	Obs	0	0	-	-	-	-	-	-	-	Very thick to South
	10 AM	29.664	51.3	12.7	-	-	-	-	SE	2-6	-	-	Cw	-	Nb	-	SE	Obs	0	0	-	-	-	-	-	-	-	Many drift flying off E side

BRITISH ANTARCTIC

EXPEDITION, 1910.

Month of

191

Meteorological

Register kept at

Day	Hour	Barometer No.	Attd. Ther. No.	THERMOMETERS					WIND		ANEMOMETER		Weather	CLOUDS		CLOUDS			Rain or Snow	Hours Sunshine	AURORA					REMARKS	Initials of Observer
				Dry Bulb No.	Max. No.	Spirit Min. No.	Solar Radn. No.	Terr. Radn. No.	Direction True	Force	Miles Read	3 Min. Later		Amount	Kind	Direction moving from		Erebus Smoke			N	E	S	W			
																Upper	Lower										
Sunday	noon	29.610	58.9	12.2	-	-	-	-	SE	5-6	-	-	C 10	10	NL	-	-	Obs	0	0	-	-	-	-	-	Low drift	REP
	2pm	29.576	52.5	13.3	-	-	-	-	SE	4-8	-	-	C 10	10	Nh	-	SE	Obs	0	0	-	-	-	-	-	heavy low drift	REP
	4pm	29.548	55.0	12.5	12.0	-	-	-	SE	4-8	-	-	C 10	10	Nh	-	-	Obs	0	0	-	-	-	-	-	Wind increasing very rapidly	REP
	6pm	29.466	46.8	14.5	15.0	-	-	-	SE	8-11	-	-	C 10	10	Nh	-	-	Obs	0	0	-	-	-	-	-	Wind increasing	REP
	8pm	29.376	43.2	13.8	14.5	-	-	-	SE	10-12	-	-	C 10	10	Nh	-	-	Obs	0	0	-	-	-	-	-	Wind increasing & steady	REP
Monday	6am	29.024	22.8	12.5	14.0	-	-	-	ESE	9-12	-	-	C 10	10	Nh	-	-	Obs	0	0	-	-	-	-	-	Wind hurricane force	REP
	8am	29.102	33.8	15.6	16.0	-	-	-	SE	9-11	-	-	C 10	10	Nh	-	-	Obs	0	0	-	-	-	-	-	More wind less drift	REP
	10am	29.124	33.2	17.2	17.5	-	-	-	ESE	9-11	-	-	C 10	10	Nh	-	ESE	Obs	0	0	-	-	-	-	-	Heavy white drizzle	REP
	2pm	29.192	36.2	16.0	18.2	-	-	-	SE	9-10	-	-	C 10	10	Nh	-	ESE	Obs	0	0	-	-	-	-	-	Slt snow & drizzle	REP
	4pm	29.212	37.8	15.0	16.0	-	-	-	SE	10-12	-	-	C 10	10	Nh	-	ESE	Obs	0	0	-	-	-	-	-	Wind stronger & gusty	REP
	6PM	29.228	42.4	18.2	19.5	-	-	-	SE	9-10	-	-	C 10	10	Nh	-	-	Obs	0	0	-	-	-	-	-	Wind strong & gusty	REP
	8pm	29.264	42.8	16.2	19.0	-	-	-	SE	8-11	-	-	C 10	10	Nh	-	-	Obs	0	0	-	-	-	-	-	Steady lightning	REP

BRITISH ANTARCTIC

EXPEDITION, 1910.

Month of

191

Meteorological

Register kept at

191

Month of

Station to Day	Hour	Barometer No.	Attd. Ther. No.	THERMOMETERS				WIND		ANEMOMETER		Weather	CLOUDS		CLOUDS		Rain or Snow	Hours Sunshine	AURORA				REMARKS	Initials of Observer																																																																																																																																																																																																																																																																																																																																																																																																																																																																																																																																																																																																																																																																																																																																																																																																																																																																																																																																																																																																																																																																																																																																																								
				Dry Bulb No.	Max. No.	Spirit Min. No.	Solar Radn. No.	Terr. Radn. No.	Direction True	Force	Miles Read		8 Min. Later	Amount	Kind	Direction moving from			Erebus Smoke	N	E	S			W																																																																																																																																																																																																																																																																																																																																																																																																																																																																																																																																																																																																																																																																																																																																																																																																																																																																																																																																																																																																																																																																																																																																																							
Thursday	5am	29.080	25.8	18.0	18.5	—	—	—	SSW	9-12	—	Obs	W	Nb	—	—	Obs	0	0	—	—	—	—	—	—	—	—	—	—	—	—	—	—	—	—	—	—	—	—	—	—	—	—	—	—	—	—	—	—	—	—	—	—	—	—	—	—	—	—	—	—	—	—	—	—	—	—	—	—	—	—	—	—	—	—	—	—	—	—	—	—	—	—	—	—	—	—	—	—	—	—	—	—	—	—	—	—	—	—	—	—	—	—	—	—	—	—	—	—	—	—	—	—	—	—	—	—	—	—	—	—	—	—	—	—	—	—	—	—	—	—	—	—	—	—	—	—	—	—	—	—	—	—	—	—	—	—	—	—	—	—	—	—	—	—	—	—	—	—	—	—	—	—	—	—	—	—	—	—	—	—	—	—	—	—	—	—	—	—	—	—	—	—	—	—	—	—	—	—	—	—	—	—	—	—	—	—	—	—	—	—	—	—	—	—	—	—	—	—	—	—	—	—	—	—	—	—	—	—	—	—	—	—	—	—	—	—	—	—	—	—	—	—	—	—	—	—	—	—	—	—	—	—	—	—	—	—	—	—	—	—	—	—	—	—	—	—	—	—	—	—	—	—	—	—	—	—	—	—	—	—	—	—	—	—	—	—	—	—	—	—	—	—	—	—	—	—	—	—	—	—	—	—	—	—	—	—	—	—	—	—	—	—	—	—	—	—	—	—	—	—	—	—	—	—	—	—	—	—	—	—	—	—	—	—	—	—	—	—	—	—	—	—	—	—	—	—	—	—	—	—	—	—	—	—	—	—	—	—	—	—	—	—	—	—	—	—	—	—	—	—	—	—	—	—	—	—	—	—	—	—	—	—	—	—	—	—	—	—	—	—	—	—	—	—	—	—	—	—	—	—	—	—	—	—	—	—	—	—	—	—	—	—	—	—	—	—	—	—	—	—	—	—	—	—	—	—	—	—	—	—	—	—	—	—	—	—	—	—	—	—	—	—	—	—	—	—	—	—	—	—	—	—	—	—	—	—	—	—	—	—	—	—	—	—	—	—	—	—	—	—	—	—	—	—	—	—	—	—	—	—	—	—	—	—	—	—	—	—	—	—	—	—	—	—	—	—	—	—	—	—	—	—	—	—	—	—	—	—	—	—	—	—	—	—	—	—	—	—	—	—	—	—	—	—	—	—	—	—	—	—	—	—	—	—	—	—	—	—	—	—	—	—	—	—	—	—	—	—	—	—	—	—	—	—	—	—	—	—	—	—	—	—	—	—	—	—	—	—	—	—	—	—	—	—	—	—	—	—	—	—	—	—	—	—	—	—	—	—	—	—	—	—	—	—	—	—	—	—	—	—	—	—	—	—	—	—	—	—	—	—	—	—	—	—	—	—	—	—	—	—	—	—	—	—	—	—	—	—	—	—	—	—	—	—	—	—	—	—	—	—	—	—	—	—	—	—	—	—	—	—	—	—	—	—	—	—	—	—	—	—	—	—	—	—	—	—	—	—	—	—	—	—	—	—	—	—	—	—	—	—	—	—	—	—	—	—	—	—	—	—	—	—	—	—	—	—	—	—	—	—	—	—	—	—	—	—	—	—	—	—	—	—	—	—	—	—	—	—	—	—	—	—	—	—	—	—	—	—	—	—	—	—	—	—	—	—	—	—	—	—	—	—	—	—	—	—	—	—	—	—	—	—	—	—	—	—	—	—	—	—	—	—	—	—	—	—	—	—	—	—	—	—	—	—	—	—	—	—	—	—	—	—	—	—	—	—	—	—	—	—	—	—	—	—	—	—	—	—	—	—	—	—	—	—	—	—	—	—	—	—	—	—	—	—	—	—	—	—	—	—	—	—	—	—	—	—	—	—	—	—	—	—	—	—	—	—	—	—	—	—	—	—	—	—	—	—	—	—	—	—	—	—	—	—	—	—	—	—	—	—	—	—	—	—	—	—	—	—	—	—	—	—	—	—	—	—	—	—	—	—	—	—	—	—	—	—	—	—	—	—	—	—	—	—	—	—	—	—	—	—	—	—	—	—	—	—	—	—	—	—	—	—	—	—	—	—	—	—	—	—	—	—	—	—	—	—	—	—	—	—	—	—	—	—	—	—	—	—	—	—	—	—	—	—	—	—	—	—	—	—	—	—	—	—	—	—	—	—	—	—	—	—	—	—	—	—	—	—	—	—	—	—	—	—	—	—	—	—	—	—	—	—	—	—	—	—	—	—	—	—	—	—	—	—	—	—	—	—	—	—	—	—	—	—	—	—	—	—	—	—	—	—	—	—	—	—	—	—	—	—	—	—	—	—	—	—	—	—	—	—	—	—	—	—	—	—	—	—	—	—	—	—	—	—	—	—	—	—	—	—	—	—	—	—	—	—	—	—	—	—	—	—	—	—	—	—	—	—	—	—	—	—	—	—	—	—	—	—	—	—	—	—	—	—	—	—	—	—	—	—	—	—	—	—	—	—	—	—	—	—	—	—	—	—	—	—	—	—	—	—	—	—	—	—	—	—	—	—	—	—	—	—	—	—	—	—	—	—	—	—	—	—	—	—	—	—	—	—	—	—	—	—	—	—	—

BRITISH ANTARCTIC

EXPEDITION, 1910.

Month of

191

Meteorological

Register kept at

Day	Hour	Barometer No.	Attd. Ther. No.	THERMOMETERS					WIND		ANEMOMETER		Weather	CLOUDS		CLOUDS			Rain or Snow	Hours Sunshine	AURORA				REMARKS	Initials of Observer			
				Dry Bulb No.	Max. No.	Spirit Min. No.	Solar Radn. No.	Terr. Radn. No.	Direction True	Force	Miles Read	3 Min. Later		Amount	Kind	Upper	Lower	Erebus Smoke			N	E	S	W					
Wednesday	6pm	28976	42.2	13.2	16.0	—	—	—	S	6-10	—	—	Cw	11	St	—	—	0	0	—	—	—	—	—	—	—	—	—	
Thursday	8am	28986	45.0	13.5	16.5	—	—	—	S	6-10	—	—	Cw	11	St	—	—	0	0	—	—	—	—	—	—	—	—	—	VB
	10am	29096	35.8	16.6	20.2	—	—	—	SSE	2-7	—	—	Cw	11	St	—	—	0	0	—	—	—	—	—	—	—	—	—	VB
	12pm	29084	42.0	16.0	21.2	—	—	—	SSE	5-9	—	—	Cw	11	St	—	—	0	0	—	—	—	—	—	—	—	—	—	VB
	2pm	29012	47.2	21.0	21.4	—	—	—	SSE	4-8	—	—	C10	10	St	—	—	0	0	—	—	—	—	—	—	—	—	—	VB
	4pm	28986	47.5	20.2	21.0	—	—	—	ESE	7-10	—	—	Cw	10	St	—	—	0	0	—	—	—	—	—	—	—	—	—	VB
	6pm	28904	37.2	13.2	20.2	—	—	—	ESE	10-12	—	—	Cw	11	St	—	—	0	0	—	—	—	—	—	—	—	—	—	VB
	8pm	28812	36.2	20.2	20.8	—	—	—	ESE	10-12	—	—	Cw	11	St	—	—	0	0	—	—	—	—	—	—	—	—	—	VB
Friday	8am	28806	32.0	20.2	21.2	—	—	—	SSE	6-10	—	—	Cw	11	St	—	—	0	0	—	—	—	—	—	—	—	—	—	VB
	10am	28850	38.2	23.9	23.9	—	—	—	S	4-9	—	—	B3C4	7	St	—	—	0	0	—	—	—	—	—	—	—	—	—	VB
	12pm	28818	44.2	22.1	25.2	—	—	—	SSE	4-9	—	—	B5C5	5	St	—	—	0	0	—	—	—	—	—	—	—	—	—	VB
	2pm	28800	44.2	22.2	22.5	—	—	—	SSE	8-11	—	—	B5C5	5	St	—	—	0	0	—	—	—	—	—	—	—	—	—	VB

BRITISH ANTARCTIC

Month of _____

191

Meteorological

EXPEDITION, 1910.

Register kept at

[illegible]

BRITISH ANTARCTIC

EXPEDITION, 1910.

Month of

191

Meteorological

Register kept at

Day	Hour	Barometer No.	Attd. Ther. No.	THERMOMETERS				WIND		ANEMOMETER		Weather	CLOUDS		CLOUDS			Rain or Snow	Hours Sunshine	AURORA				REMARKS	Initials of Observer					
				Dry Bulb No.	Max. No.	Spirit Min. No.	Solar Radn. No.	Terr. Radn. No.	Direction True	Force	Miles Read		3 Min. Later	Amount	Kind	Upper	Lower			Erebus Smoke	N	E	S			W				
Sunday	12 ^{noon}	28.766	512	40.71 4.2	5.0	3.1	—	3.5 4.5	NW	1	—	—	B $\frac{1}{2}$ C $\frac{1}{2}$	9 $\frac{1}{2}$	NW	—	—	Obs	0	—	—	—	—	—	—	—	—	—	—	
	2 ^{pm}	28.700	522	+4.0 +4.4	—	+3.8	—	4.4 4.8	Calm	—	—	—	Cu	10	NW	—	—	Obs	0	—	—	—	—	—	—	—	—	—	—	
	4 ^{pm}	28.694	535	+3.2 +2.0	4.4	2.5	—	+3.1	N	1-2	—	—	Cu	10	NW	—	—	Obs	0	—	—	—	—	—	—	—	—	—	—	
	6 ^{pm}	28.678	562	2.7 +0.6	3.4	2.0	—	2.9	E	1	—	—	Cu	10	NW	—	—	Obs	0	—	—	—	—	—	—	—	—	—	—	
	8 ^{pm}	28.678	562	+1.7 +0.1	+2.9	+0.5	—	2.0	SE	2-3	—	—	Cu	10	NW	—	—	Obs	0	—	—	—	—	—	—	—	—	—	—	
Monday	8 ^{am}	28.678	432	+0.8 +1.2	+4.8	-0.1	—	+0.2	NW	airs	—	—	Obs	10	NW	—	—	Obs	0	—	—	—	—	—	—	—	—	—	—	—
	10 ^{am}	28.714	444	-0.8 -0.2	+1.0	-1.6	—	-2.5 -2.0	Calm	—	—	—	B $\frac{1}{2}$ C $\frac{1}{2}$	43	NW	—	—	Obs	0	—	—	—	—	—	—	—	—	—	—	
	12 ^{noon}	28.708	462	0.0 +0.2	+0.2	-1.9	—	-0.2 -0.1	W	1	—	—	Cu	10	NW	—	—	Obs	0	—	—	—	—	—	—	—	—	—	—	
Tuesday	10 ^{am}	28.488	408	+2.8 +8.0	+3.6	-3.5	—	+3.4	W	1	—	—	Cu	10	NW	—	—	Obs	0	—	—	—	—	—	—	—	—	—	—	—
	12 ^{noon}	28.446	392	+7.2 +2.8	+7.6	—	—	+2.2 +7.1	E	4-7	—	—	Cu	10	NW	—	—	Obs	0	—	—	—	—	—	—	—	—	—	—	—
	2 ^{pm}	28.366	342	+6.8 +1.8	+7.4	—	—	—	SE	7-10	—	—	Cu	10	NW	—	—	Obs	0	—	—	—	—	—	—	—	—	—	—	—
	4 ^{pm}	28.336	354	+6.2 +1.2	+7.0	—	—	—	SE	7-10	—	—	Cu	10	NW	—	—	Obs	0	—	—	—	—	—	—	—	—	—	—	—

BRITISH ANTARCTIC

EXPEDITION, 1910.

Month of

191

Meteorological

Register kept at

Day	Hour	Barometer No.	Attd. Ther. No.	THERMOMETERS				WIND		ANEMOMETER		CLOUDS		CLOUDS		Rain or Snow	Hours Sunshine	AURORA				REMARKS	Initials of Observer		
				Dry Bulb No.	Max. No.	Spirit Min. No.	Solar Radn. No.	Terr. Radn. No.	Direction True	Force	Miles Read	3 Min. Later	Weather	Amount	Kind			Upper	Lower	Erebus Smoke	N			E	S
Tuesday	6pm	26.248	170	7.4	7.6	-	-	-	ESE	10-12	-	Ob	10	Nb	-	-	Ob	0	0	-	-	-	-	Wind very strong.	RSP
	8pm	26.304	352	6.2	8.4	-	-	-	SE	10-12	-	Ob	10	Nb	-	-	Ob	0	0	-	-	-	-		RSP
Wednesday	4am	26.756	358	8.2	11.8	-	-	-	S	0-3	-	Ob	5	Nb	-	-	Ob	0	0	-	-	-	-	Wind gone nearly morning	RSP
	6am	26.800	362	8.9	9.0	-	-	-	SSE	0-3	-	B2C3	3	Nb	-	-	Ch	0	0	-	-	-	-	Close halo round moon	RSP
	8am	26.878	409	8.2	10.5	8.0	-	6.2	S25W	1-4	-	B1C9	9	Nb	-	-	Ch	0	0	-	-	-	-	Close halo round moon (snowy & white)	RSP
	10am	26.996	465	7.1	9.8	7.0	-	6.5	S20W	3	-	B2C2	9	Nb	-	-	1/2 Ob	0	0	-	-	-	-	Clear to N.E.	RSP
	12 noon	29.084	455	5.8	7.1	4.9	-	4.8	W	1-3	-	Ob	10	Nb	-	-	2 Ob	0	0	-	-	-	-	Snow falling as granules	RSP
	2pm	29.162	527	2.5	7.2	2.5	-	2.6	N	1	-	Ob	10	Nb	-	-	Ob	0	0	-	-	-	-	of reg. of pins head smaller.	RSP
	4pm	29.204	538	3.8	4.8	2.1	-	2.8	Calm	-	-	Ob	10	Nb	-	-	Ob	0	0	-	-	-	-		RSP
	6pm	29.248	553	4.9	5.0	2.0	-	2.0	Calm	-	-	B2C8	8	Nb	-	-	Ob	0	0	-	-	-	-	A little clearer to	RSP
	8pm	29.270	565	4.6	4.8	3.9	-	3.0	S20W	1	-	Ob	10	Nb	-	-	Ob	0	0	-	-	-	-	the S.	RSP

EXPEDITION, 1910.

191

Meteorological

Register kept at

[illegible]

BRITISH ANTARCTIC EXPEDITION, 1910.

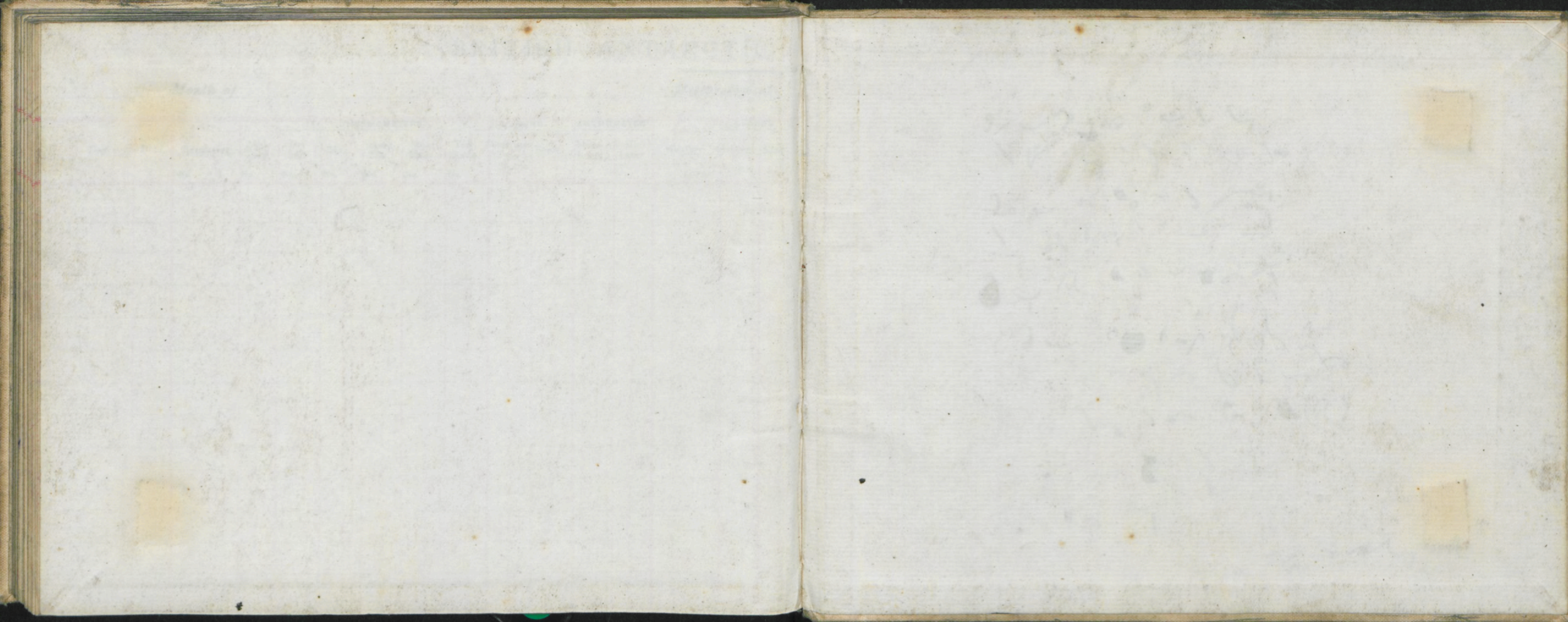
Monih of 191

191

Meteorological

Register kept at 101 to 110 11

[illegible]



Handwritten notes in a cursive script, possibly a mix of Persian and Arabic, located in the lower-left quadrant of the left page.

Handwritten notes in a cursive script, located in the upper-left quadrant of the right page.

Handwritten notes in a cursive script, located in the upper-middle quadrant of the right page.

Handwritten notes in a cursive script, located in the middle-left quadrant of the right page.

Handwritten notes in a cursive script, located in the middle-right quadrant of the right page.

Handwritten notes in a cursive script, located in the lower-middle quadrant of the right page.

Handwritten notes in a cursive script, located in the lower-right quadrant of the right page.

Handwritten notes in a cursive script, located at the bottom right of the right page.

12

- 2.2
- 3.0 28
0.5
3.8

28
11
1.6