



Met Office

# Met Office 3-month Outlook

Period: December 2019 – February 2020 Issue date: 22.11.19

The forecast presented here is for December and the average of the December-January-February period for the United Kingdom as a whole. The forecast for December will be superseded by the long-range information on the public weather forecast web page ([www.metoffice.gov.uk/public/weather/forecast/#?tab=regionalForecast](http://www.metoffice.gov.uk/public/weather/forecast/#?tab=regionalForecast)), starting from 2<sup>nd</sup> December 2019.

This forecast is based on information from observations, several numerical prediction systems and expert judgement.

## SUMMARY – PRECIPITATION:

For December and December-January-February as a whole, above-average precipitation is more likely than below-average precipitation.

The probability that UK-average precipitation for December-January-February will fall into the driest of our five categories is between 10% and 15% and the probability that it will fall into the wettest of our five categories is around 30% (the 1981-2010 probability for each of these categories is 20%).

## CONTEXT:

During winter, the influence of global drivers on UK weather patterns peaks and predictability is higher than at other times of year.

For both December and December-January-February, there is a greater-than-usual likelihood of westerly winds bringing moisture from the Atlantic Ocean to the UK (see temperature outlook). The chances of above-average precipitation are therefore greater than the chances of below-average precipitation (see graphs of figure P2). The outlook implies an increased likelihood of impacts from high

winds and heavy rainfall compared to what is normally expected at this time of year.

The increased probability of our wettest category does not imply extreme precipitation or storminess throughout the 3-month period. Indeed, the outlook does not identify weather for a particular day or week. In addition, despite increased chances of the outlook period being wetter than average, a drier-than-average outcome remains possible, although less likely.

Fig P1

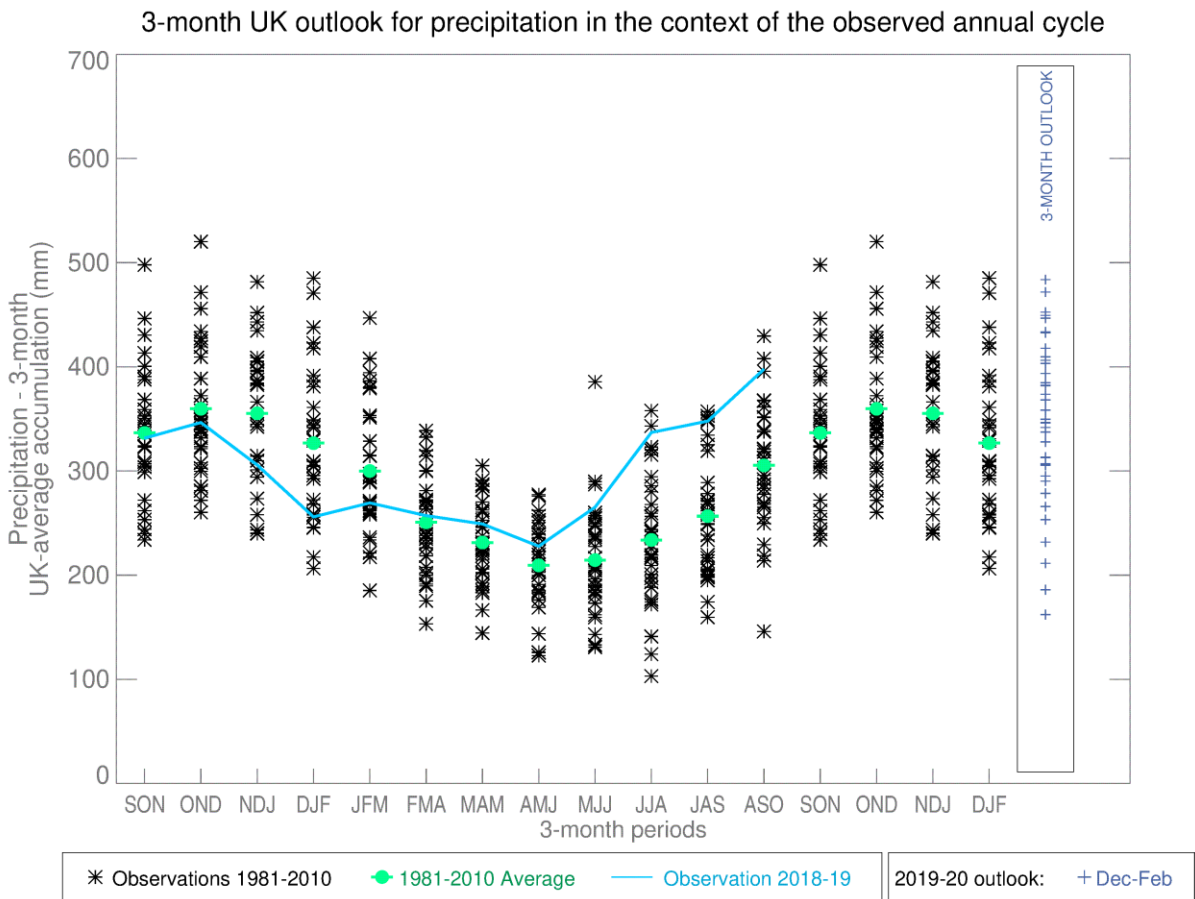


Fig P2

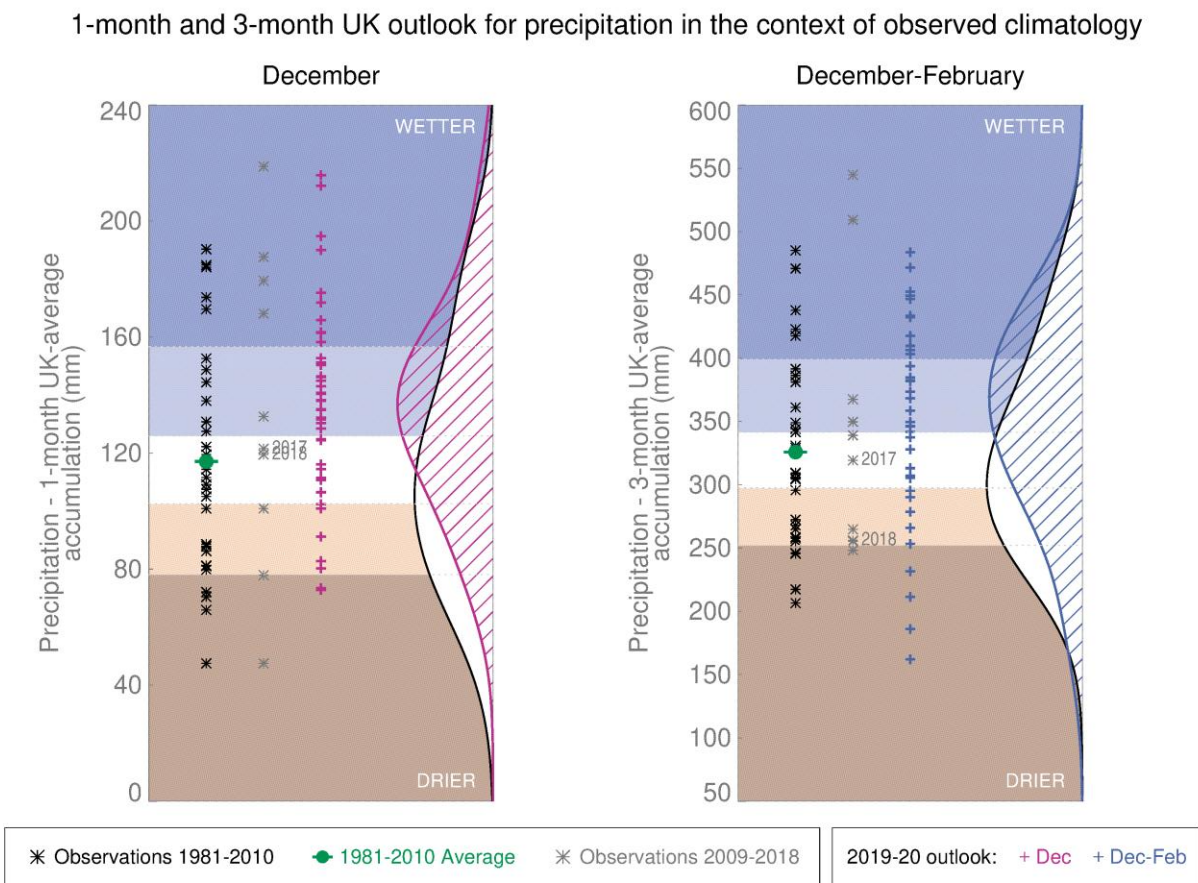
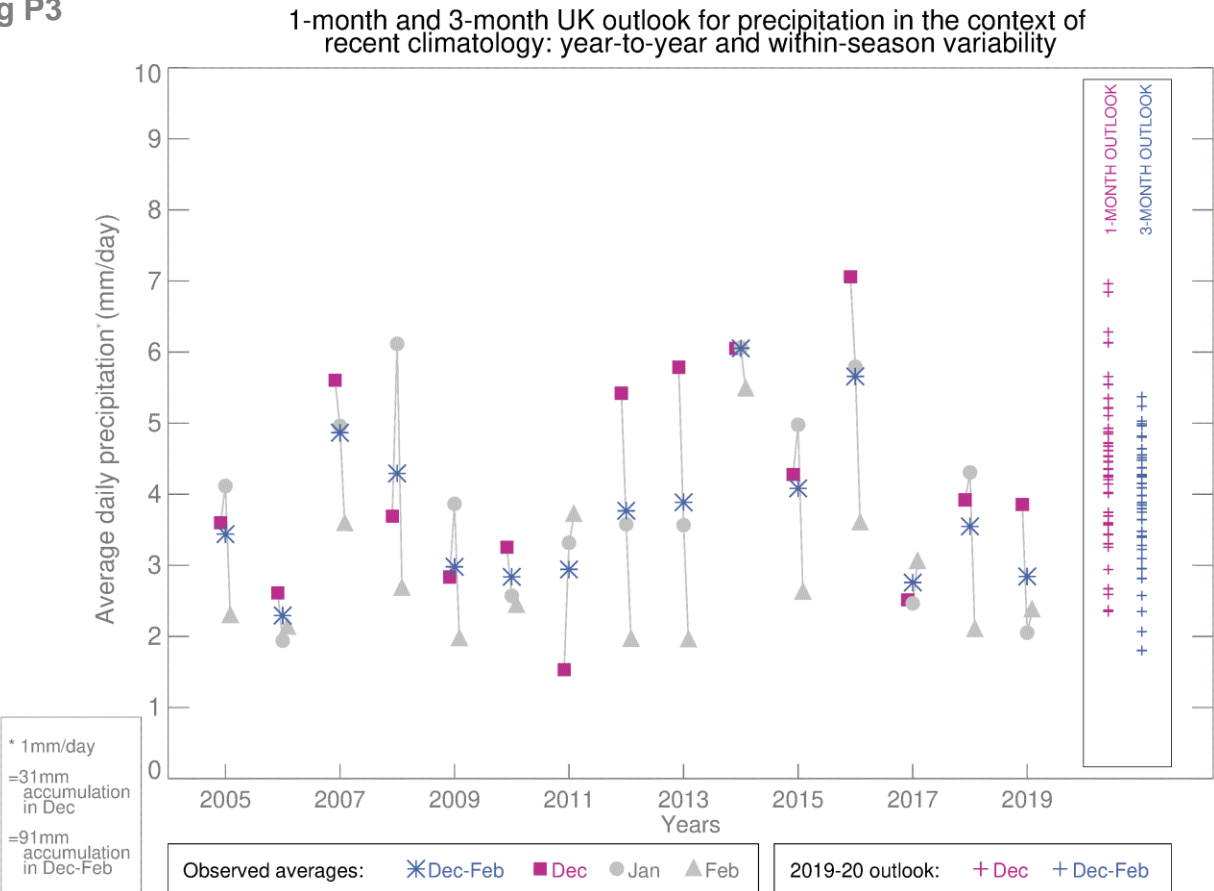


Fig P3



This Outlook provides an indication of possible temperature and rainfall conditions over the next 3 months. It is part of a suite of forecasts designed for contingency planners. The Outlook should not be used in isolation but should be used with shorter-range and more detailed (30-day, 15-day and 1-to-7-day) forecasts and warnings available to the contingency planning community from the Met Office.