



Met Office

Met Office 3-month Outlook

Period: May – July 2020 Issue date: 23.04.20

The forecast presented here is for May and the average of the May-June-July period for the United Kingdom as a whole. The forecast for May will be superseded by the long-range information on the public weather forecast web page (www.metoffice.gov.uk/public/weather/forecast/#?tab=regionalForecast), starting from 1st May 2020.

This forecast is based on information from observations, several numerical prediction systems and expert judgement.

SUMMARY – PRECIPITATION:

For May, below-average precipitation is moderately more likely than above-average precipitation. For May-June-July as a whole, below-average precipitation is more likely than above-average precipitation.

The probability that UK-average precipitation for May-June-July will fall into the driest of our five categories is around 30% and the probability that it will fall into the wettest of our five categories is 10% (the 1981-2010 probability for each of these categories is 20%).

CONTEXT:

There are fewer global drivers of UK weather patterns at this time of year compared to the winter, so predictability of precipitation amounts tends to be lower. This means there are typically only small shifts in the likelihood of above- and below- average precipitation. Despite that, as discussed in the Outlook for temperature, the confidence in signals from long-range systems from global prediction centres is higher than normal for this time of year. These signals suggest a greater-than-usual chance of high pressure near the UK, and thereby an increased likelihood of drier-than-normal conditions.

For May, and May-June-July as a whole, below-average rainfall is more likely than above-average rainfall (see graphs of figure P2), reflecting the greater likelihood of above-average pressure. There remains a realistic chance of above-average rainfall, however, albeit less likely. In addition, spells of more unsettled, wet and windy weather are not precluded even if the Outlook period is drier-than-normal overall.

Fig P1

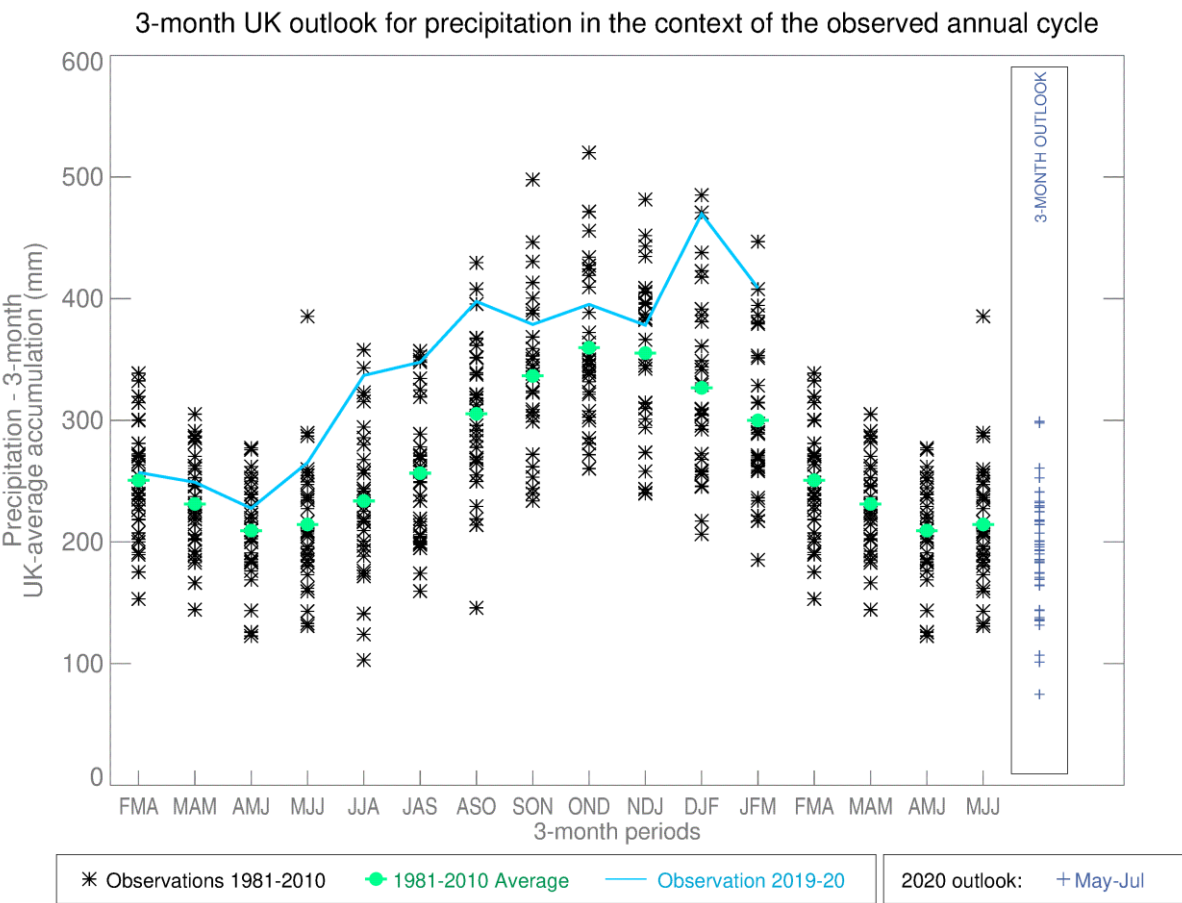


Fig P2

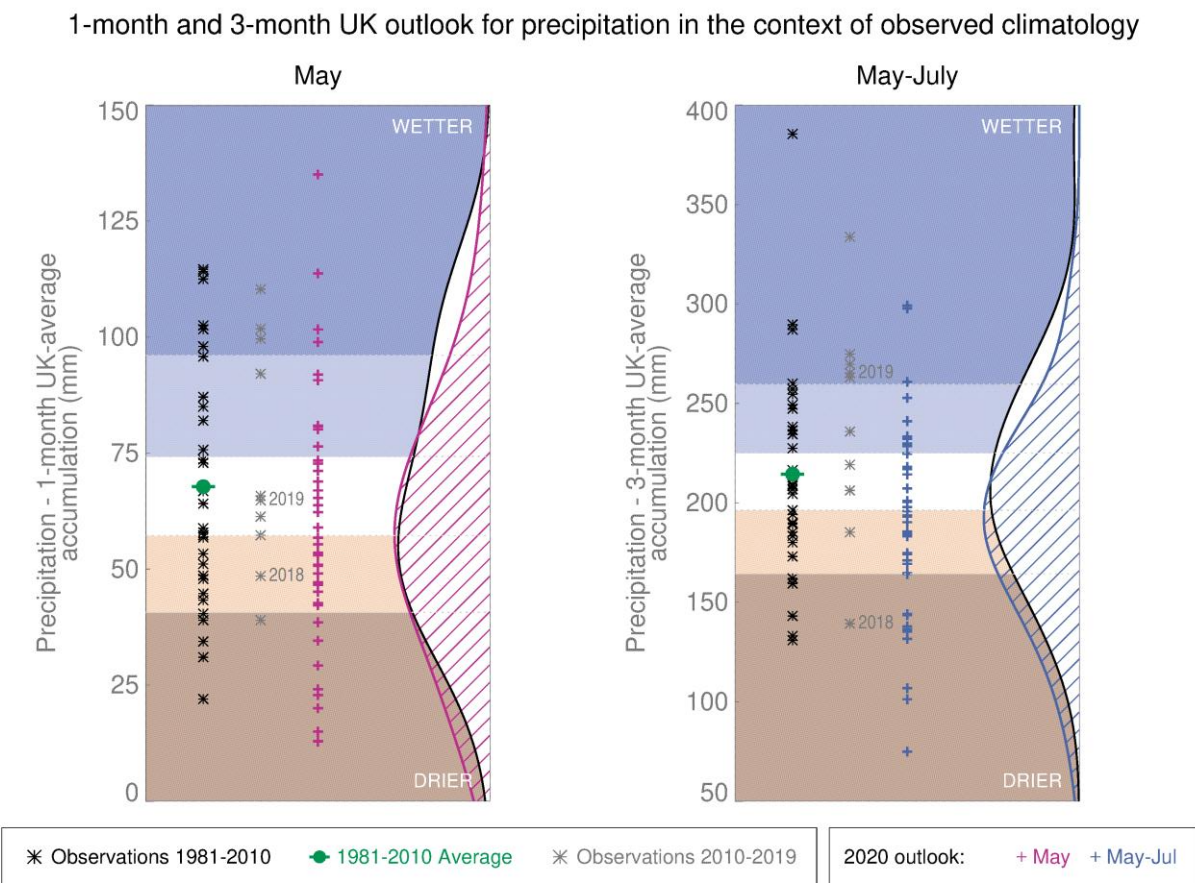
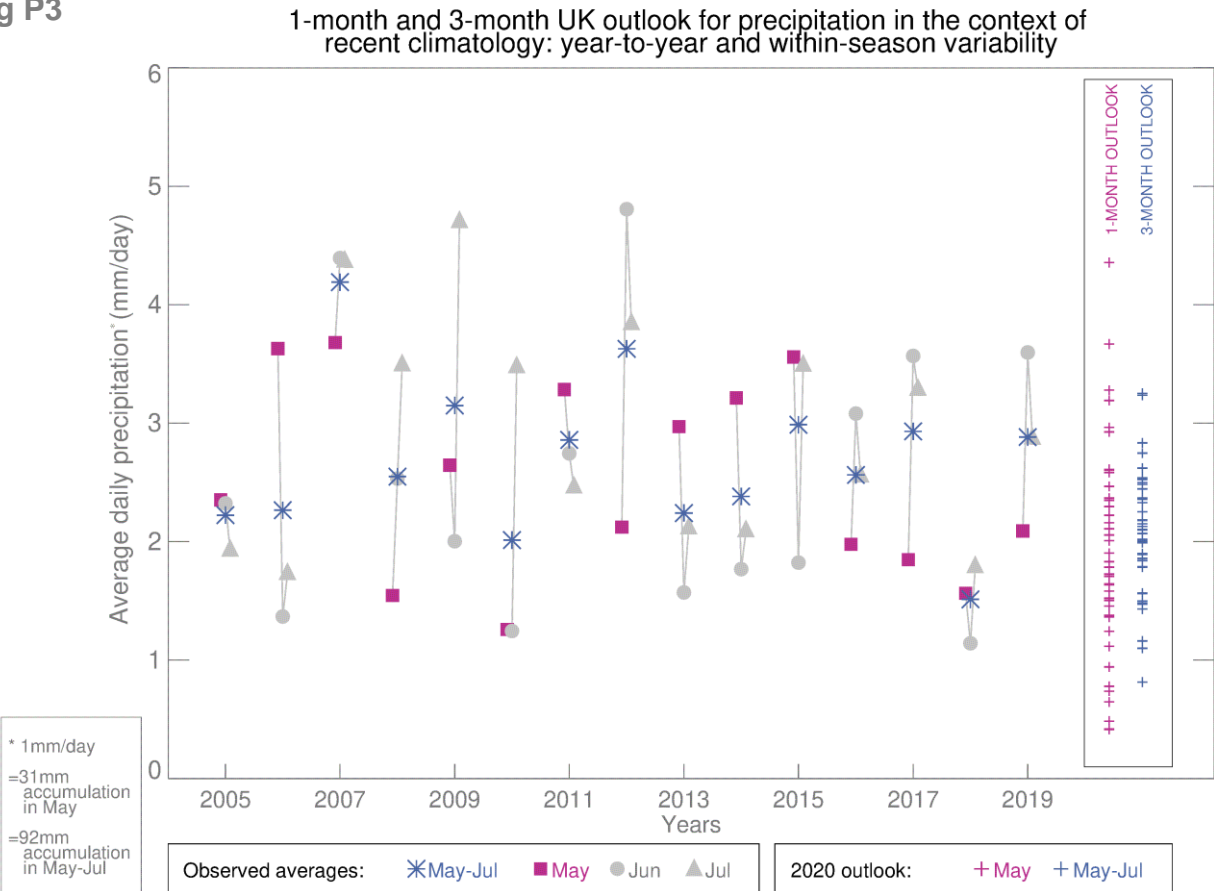


Fig P3



This Outlook provides an indication of possible temperature and rainfall conditions over the next 3 months. It is part of a suite of forecasts designed for contingency planners. The Outlook should not be used in isolation but should be used with shorter-range and more detailed (30-day, 15-day and 1-to-7-day) forecasts and warnings available to the contingency planning community from the Met Office.