

The forecast presented here is for April and the average of the April-May-June period for the United Kingdom as a whole. The forecast for April will be superseded by the long-range information on the public weather forecast web page ([www.metoffice.gov.uk/public/weather/forecast/#?tab=regionalForecast](http://www.metoffice.gov.uk/public/weather/forecast/#?tab=regionalForecast)), starting from 4 April 2014.

This forecast is based on information from observations, several numerical models and expert judgement.

## SUMMARY - PRECIPITATION:

Latest predictions for UK precipitation are largely indistinguishable from climatology for both April and April-May-June as a whole. The probability that UK precipitation for April-May-June will fall into the driest of our five categories is between 10 and 15% and the probability that it will fall into the wettest category is between 20 and 25% (the 1981-2010 probability for each of these categories is 20%).

## CONTEXT:

Climatologically, spring is the driest season of the year, as shown in Figure P1. In general, through spring rainfall becomes increasingly challenging to predict given that the likelihood of localised convective rainfall increasingly dominates the rainfall distribution.

As discussed in the temperature section, at present no single forcing factor appears dominant. With the weight of the predictions currently suggesting some preference towards a blocked pattern for at least part of April, as well as some drift towards slightly more unsettled conditions developing as the month progresses, the signal for rainfall amounts over the month as a whole is largely indistinguishable from

climatology.

Over the 3-month period, April-May-June, the precipitation probabilities are largely indistinguishable from climatology, as indicated by the right-hand side graph in Figure P2. This means that the probability of the exceptionally wet conditions of April-May-June 2012 is currently estimated as very low (note how none of the blue crosses on the right panel of Figure P2 are as high as the grey cross labelled 2012).

Fig P1

3-month UK outlook for precipitation in the context of the observed annual cycle

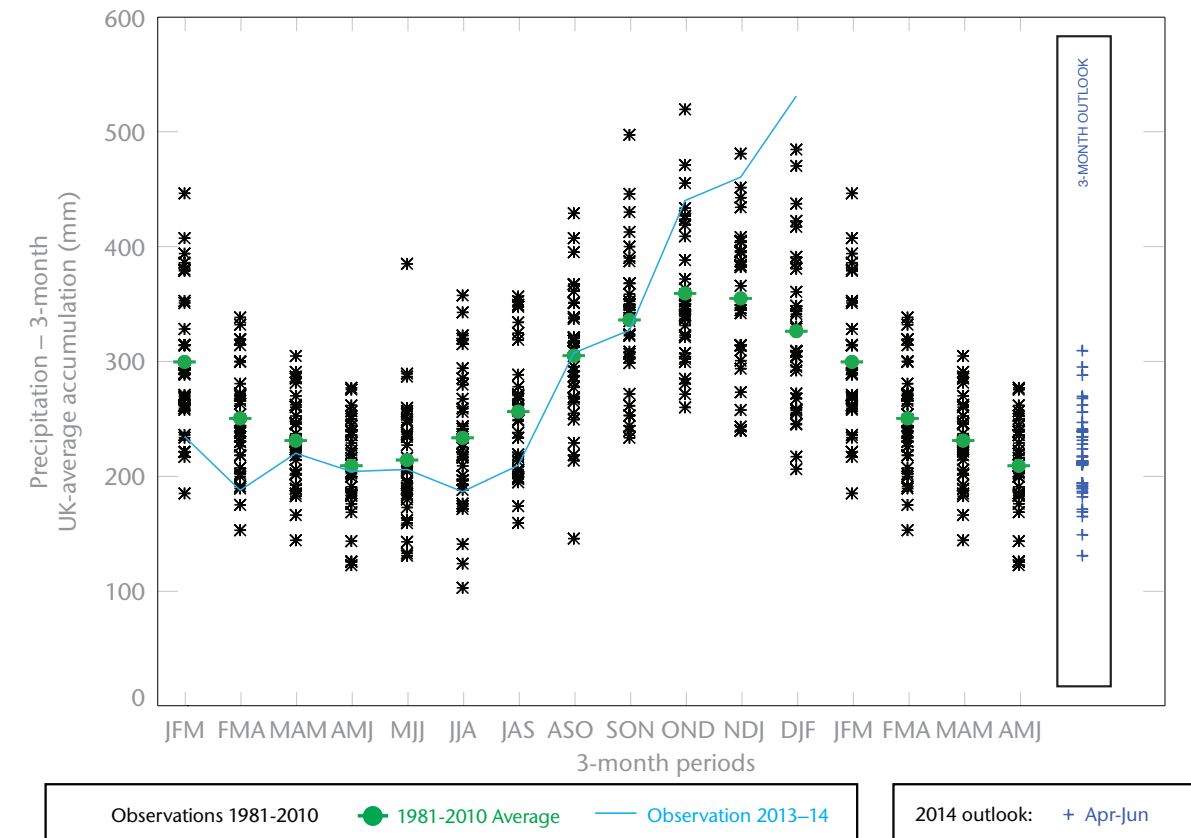


Fig P2

1-month and 3-month UK outlook for precipitation in the context of observed climatology

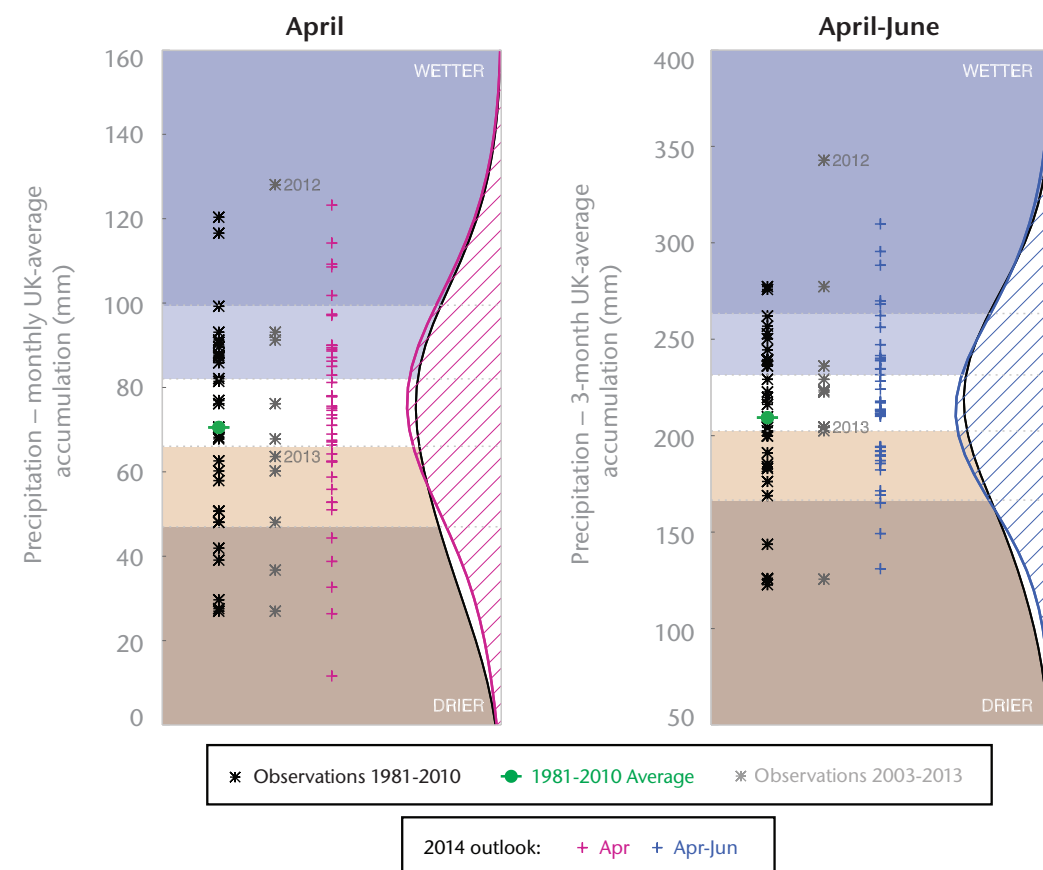
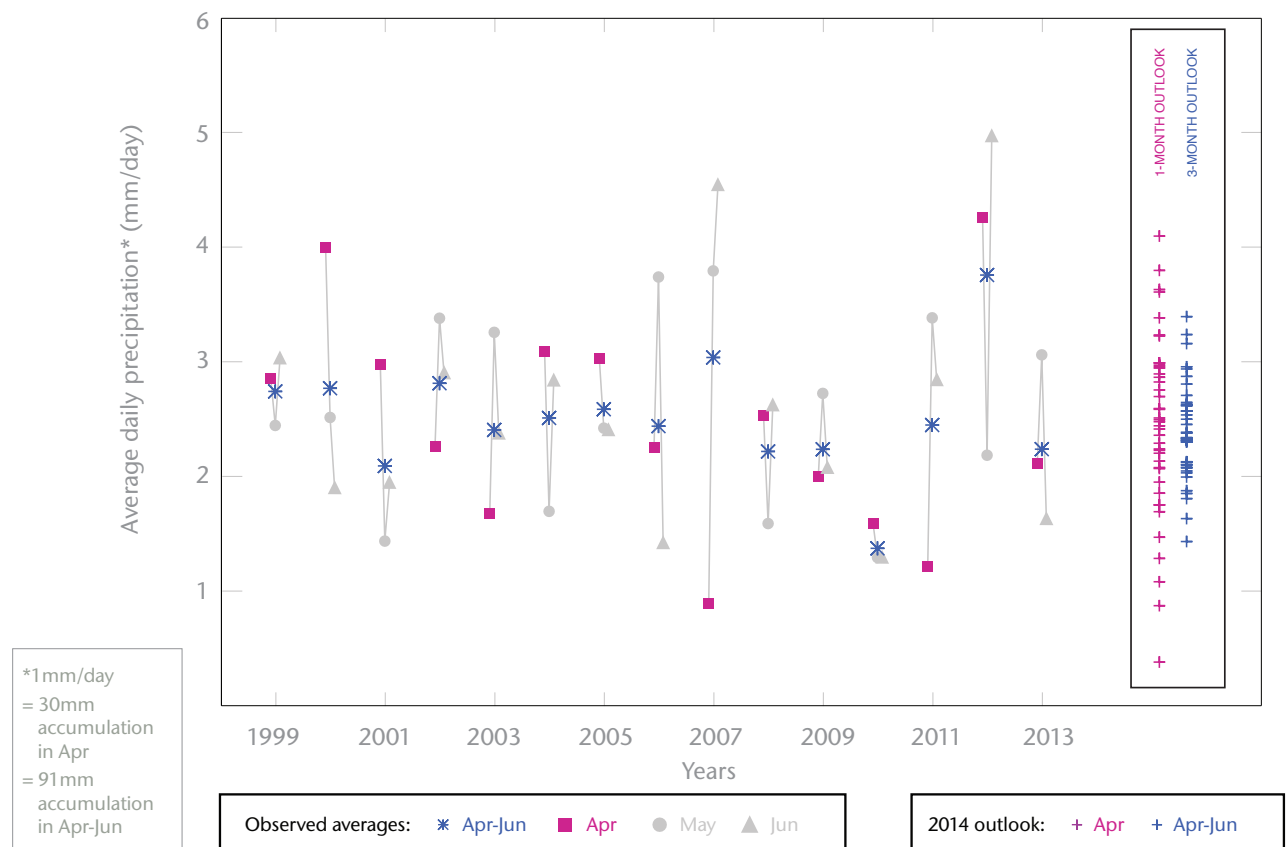


Fig P3

1-month and 3-month UK outlook for precipitation in the context of recent climatology: year-to-year and within-season variability



This Outlook provides an indication of possible temperature and rainfall conditions over the next 3 months. It is part of a suite of forecasts designed for contingency planners.

The Outlook should not be used in isolation but should be used with shorter-range and more detailed (30-day, 15-day and 1-to-5-day) forecasts and warnings available to the contingency planning community from the Met Office.